

# HDVR EZ-IP Series NVR



- Linux Embedded
- Dual stream for managing bandwidth
- iPhone, iPad, Android, BlackBerry mobile clients
- Web-based live viewer / playback
- Online GUI recording schedule

- Supports Megapixel and H.264 cameras
- Digital PTZ and multi-view
- Audio recording
- Up to 4 SATA HDD bays
- RAID 0,1,5,10
- Real-time digital output and email alert

- 4, 8 or 16 IP cameras
- Up to 128 channels remote live view
- Playback with intelligent search
- Point of Sale (POS)
- Digital watermark
- NTP server synchronization

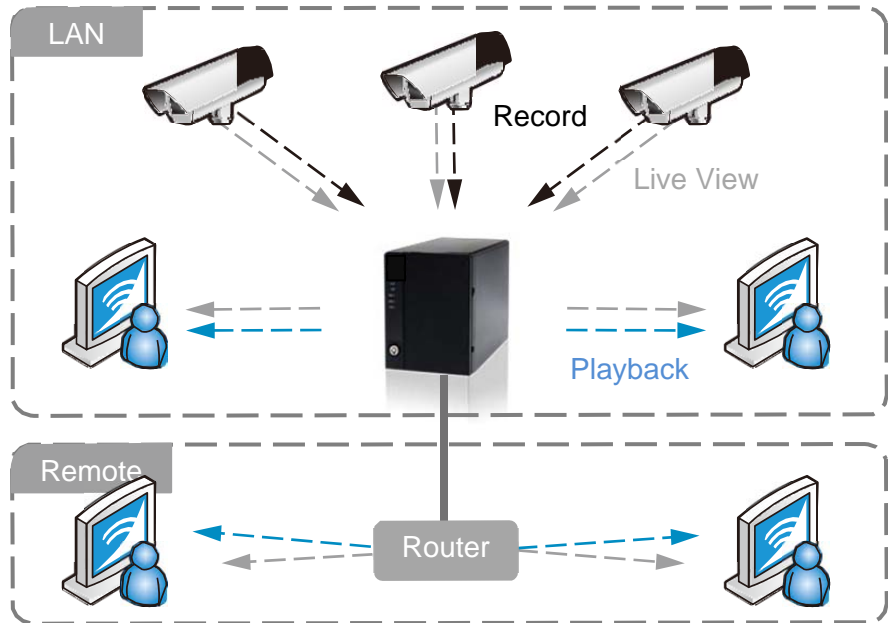


**800.873.5528**  
**WWW.TARGETD.COM**

[www.clear2there.com](http://www.clear2there.com)

# Server-Client Architecture

- Linux Embedded –  
Free from PC Crash and virus attack
- RAID 0,1,5,10 – prevention of data loss
- Support Megapixel cameras and H.264 compression format
- Supports over 50 brands and 1400 different camera models
- Supports audio recording
- Supports Point of Sale (POS)
- Camera I/O integration
- Real-time digital output and email alert
- Mobile client
- Four levels of user authority:  
Administrator, power user, user, and guest
- Smart search
- Online administration and GUI recording schedule
- Client software for managing multiple NVR's
- Logging system



Linux-Embedded



Five Intelligent Searches



POS (Point of Sale)



Dual Stream Profile



Mobile Support



Web Based Live View



Remote Client



Event Alert



E-MAP



H.264, MPEG4,  
MJPEG, MxPEG



Auto Backup Video



Digital Watermark



# Web-Based Liveview



Point of Sale (POS)

POS text overlay on live and recorded video. All transactions are text searchable.



Region of Interest (ROI)

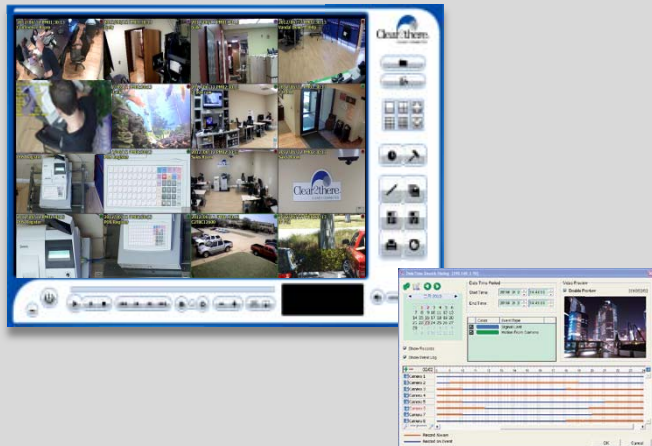
Duplicate camera views on screen and using digital zoom, focus on different regions of interest simultaneously



- Web-based management (Recommend IE 8 or later)
- Up to 128 channels remote live display on multiple monitors
- Easy drag-and-drop cameras on screen
- Camera PTZ integration
- Digital PTZ
- Auto scan
- Region of Interest (ROI)
- Preset point set, go and patrolling
- Supports joystick
- System event popup
- Camera event on screen display and sound notification

## Intelligent Playback

- Open recordings by time, graphic record or event log
- Multi-channel playback
- Playback system with 5 intelligent search options
- Video enhancement – fine tune the image visibility, sharpness, brightness, contrast or grey scale
- POS search
- Support digital watermark on exported video or snapshot
- Evidence export
- Auto backup video to FTP



### 5 Intelligent Search Options



Model	C2THDVREZIP4	C2THDVREZIP8	C2THDVREZIP16
Recording Camera	1-4	1-8	1-16
Number of Drives	2xSATA II	4xSATA II	4xSATA II
Available Drive Bays (Drives Not Included)	1, 2, 6TB	1, 4, 8, 12TB	1, 4, 8, 12TB
RAID Level	RAID 0, 1	RAID 0, 1, 5, 10	RAID 0, 1, 5, 10
I/O Interface	2xUSB 2.0 (for UPS)		
LAN Port (s)	1xGigabit RJ-45 Ethernet port	2xGigabit RJ-45 Ethernet ports	
Temperature	Operating: 0°C ~ 40°C		
Humidity	Operating: 10% ~ 85%		
Compression Format	H.264		
Recording Performance	Camera Dependent Total Bitrate: 40Mbps (Around 120fps at 1.3M)	Camera Dependent Total Bitrate: 80Mbps (Around 240fps at 1.3M)	Camera Dependent Total Bitrate: 80Mbps (Around 240fps at 1.3M)
Remote PC CPU	Intel Core 2 Duo, 2.6 GHz		
Remote PC RAM	1 GB		
User Interface	HTTP Web Browser – Internet Explorer 8 and later/Client Application Program		
Recording Type	Continuous record, record by schedule, manual record, event trigger record, digital input trigger record		
Remote Live View Control	Live view, preset/go, PTZ, remote I/O, snapshot, multi-view, digital PTZ, advanced E-Map, bandwidth monitoring		
Audio & Video Recording	Audio & video recording in synchronization		
POS	Live view, record, playback and search for every transaction		
Auto Backup	Automatically backup the recorded video of the previous date to FTP		
Smart Search	General motion, missing object, foreign object, lose focus, camera occlusion		
Remote Client OS Platform	Windows XP (32-bit)/Vista (32-bit)/7 (32 and 64-bit)		
Remote Live View Connections	Live view maximum 64 connections at the same time		
Mobile Client OS Platform	iPhone, iPad, Android, Blackberry		

Supports over 50 brands of IP cameras and over 1400 models



Revised 06/12

800.210.2172 or 888.987.2446 toll free • 405.948.9222 fax  
4211 N. Barnes Ave. • Oklahoma City, OK 73112  
301 Goolsby Blvd. • Deerfield Beach, FL 33442

[www.clear2there.com](http://www.clear2there.com)