

Clear2there HDVR Series



Cube Case

Rackmount (4U)

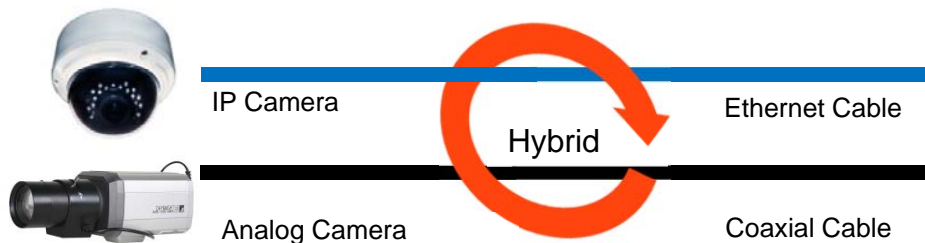
Pro Series (2U)



Protect your analog investment with the HDVR Hybrid Video Recorder specially designed by Clear2there. The HDVR Series provides seamless integration and recording of both analog and IP Megapixel video surveillance cameras. Our powerful and easy to use client enables you to connect to multiple HDVR servers to view up to 128 cameras simultaneously. Video from all HDVR Series systems can be accessed with web browsers and iOS mobile devices. With remote monitoring, you can view live and recorded video from anywhere to monitor your video deployments and react quickly to alarms and events.

FUTURE PROOF YOUR INVESTMENT WITH THE HDVR SERIES HYBRID FROM CLEAR2THERE!

- IP, Analog or Hybrid Solution
- Up to 64 Channels per Server
- Free Remote Software to Connect Multiple Servers
- Smart Guard Detection of 6 Events with 10 Instant Responses
- Smart Search on Playback
- iPhone, iPad, Android Apps
- Video Transcoding for Remote Viewing
- Digital Watermark
- Instant Playback
- Friendly GUI Interface
- Privacy Mask
- Counting Application
- Two-Way Audio
- Auto Backup Feature
- Edge Motion Integration
- E-Map
- POS, I/O, LPR, Access Control Integration
- Digital PTZ and Camera Multi-view



Customize your HDVR to fit your specifications



800.873.5528
WWW.TARGETD.COM

www.clear2there.com



Embedded Analytics

Safeguard your properties with 5 Smart Guard live event notifications, smart search capabilities, 14 POS events, digital input events and 4 system events. You can also keep track of the traffic with a built-in counting application.

General Motion Missing Object Camera Occlusion Foreign Object Loss of Focus



Remote Viewing

The HDVR can be viewed using any Windows PC, iPhone, iPad or Android device.

PC – Live view up to 128 cameras simultaneously from multiple recorders, playback up to 16 cameras, PTZ controls including digital PTZ, set favorite groups, download video, take snapshots and two-way audio.

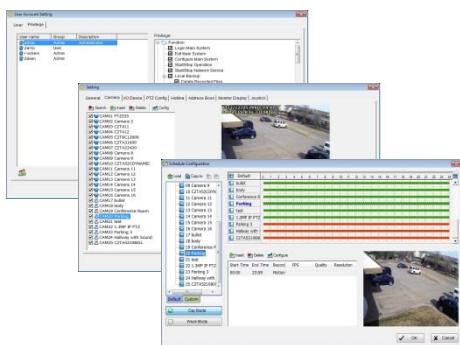
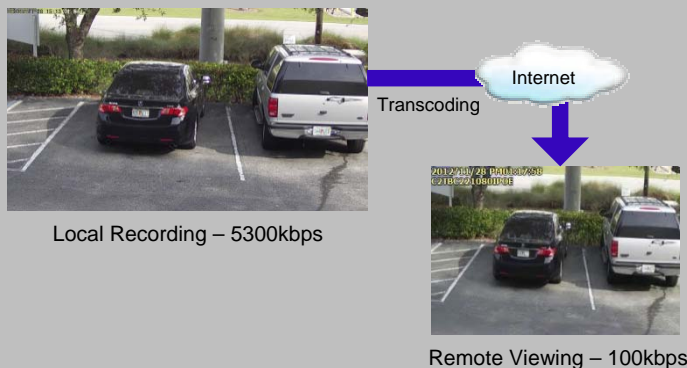
iPhone/iPad – Live view multiple cameras (up to 6 on iPhone, up to 40 on iPad), playback single channel, high/low quality, snapshot, PTZ control including digital PTZ, one-way audio

Stream Transcoding

You can record and stream at different resolutions and frame rates with the HDVR. High bandwidth video streams can be transcoded into a much lower bandwidth stream for internet viewing.

Mode	Resolution	Frame Rate	Bandwidth*
Recording	1920x1080	30fps	5300 kbps
Remote Viewing	320x240	10fps	100 kbps

* Actual bandwidth varies by scene complexity



Easy to Use GUI Interface

The HDVR GUI interface is powerful and easy to use:

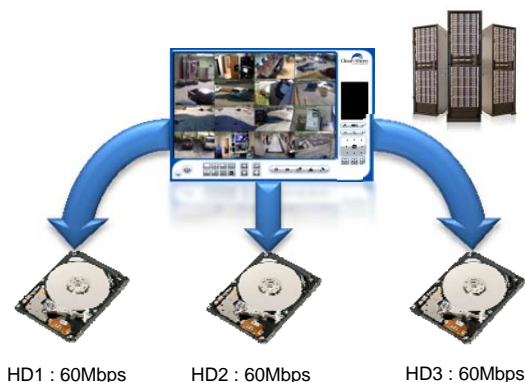
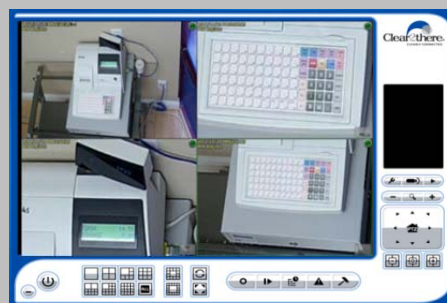
Scheduling – Multiple recording modes can be set by camera or globally. Parameters can be copied to independent or all cameras.

Users – Assign specific rights/parameters to each user based on needs.

Cameras – Set each camera for quality, frame rate, resolution and recording schedules independently.

Stream Relaying (Region of Interest)

Stream relaying duplicates a single camera multiple times on the screen for region of interest viewing. This enables the customer to digitally zoom in on specific areas of view while still recording the original stream.



Auto Load Balance and Auto Backup

Auto load balance increases data writing and reading efficiency to optimize hard drive recording performance. In large projects, the HDVR can also be connected to Clear2there's InfiniVi™ mass storage solution.

Recorded data can be backed up automatically to external storage devices including DAS, SAN or iSCSI based on a pre-defined schedule.



Cube Case Models:

C2THDVR24K
C2THDVR58K
C2THDVR110K

Features:

- Storage Up to 6TB
- Separate OS Drive
- Active PFC Power Supply with 85%+ Efficiency
- VGA / DVI Outputs (except 24K)
- Up to 32 Analog Cameras

Rackmount Case Models:

C2THDVR24K-R
C2THDVR58K-R
C2THDVR110K-R

Cube Case Features **Plus:**

- Storage Up to 15+TB
- 5 Bay Hot Swap Cage for Storage
- Up to 64 Analog Cameras
- 4U Rackmount Case

Pro Series Rackmount Models:

C2THDVR220K-R

Pro Features:

- Storage Up to 24+TB / Hot Swap
- Redundant Hot Swap Operating Systems and Power Supplies
- IPMI Interface
- VGA / DVI / HDMI Outputs
- 2U Rackmount Case w/Rails

The HDVR includes its K rating in the SKU. K ratings are a calculation of how much processing power the HDVR has to view, record and process the video with analytics properly for all cameras (both analog and IP) on the HDVR. For example, the table below shows a single 1.3MP camera recording at 30 FPS requires an HDVR with a 7K rating or higher. Please contact your Clear2there representative with any questions.

Note: All recorders are built to suit. Analog cards and IP licensing all sold separately.

IP Cameras	Resolution	FPS	Required K Rating
1	2MP or 1080P (1920 x 1080)	30	11
1	2MP or 1080P (1920 x 1080)	10	4
1	1.3MP (1280 x 960)	30	7
1	1.3MP (1280 x 960)	10	2
1	D1 (702 x 480)	30	3
1	360P (640 x 360)	30	1
1	CIF (352 x 240)	30	1
Analog Cameras	Resolution	FPS	Required K Rating
1	D1 (702 x 480)	30	1.323
1	CIF (352 x 240)	30	.33

Supports over 70 brands of IP cameras and over 1800 models



Not all manufactures are represented. For a complete list of brands and models, please refer to www.clear2there.com/hdvrsupportedcams

800.210.2172 or 888.987.2446 toll free • 405.948.9222 fax

4211 N. Barnes Ave. • Oklahoma City, OK 73112

301 Goolsby Blvd. • Deerfield Beach, FL 33442