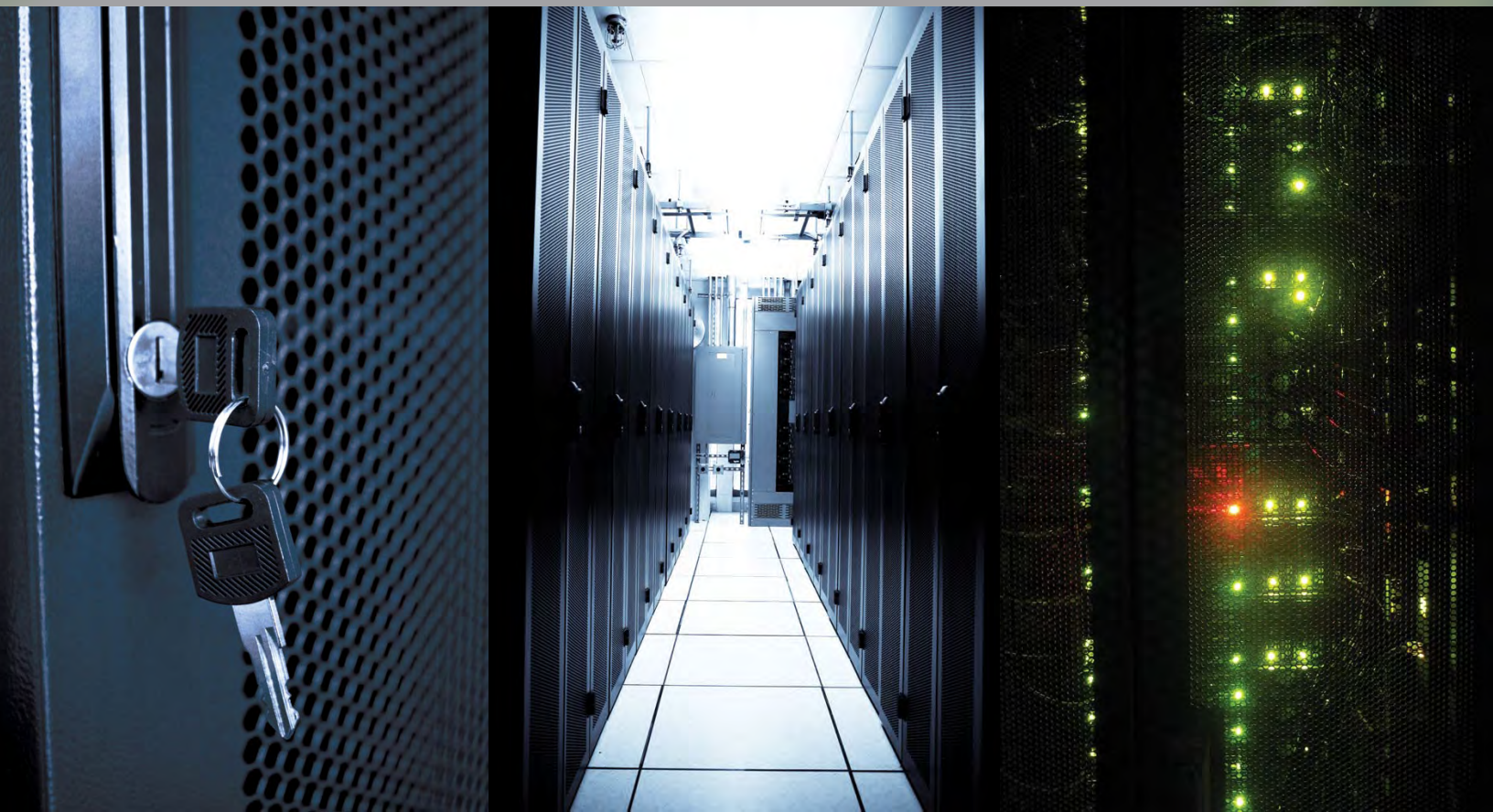


# Cabinet & Rack Solutions

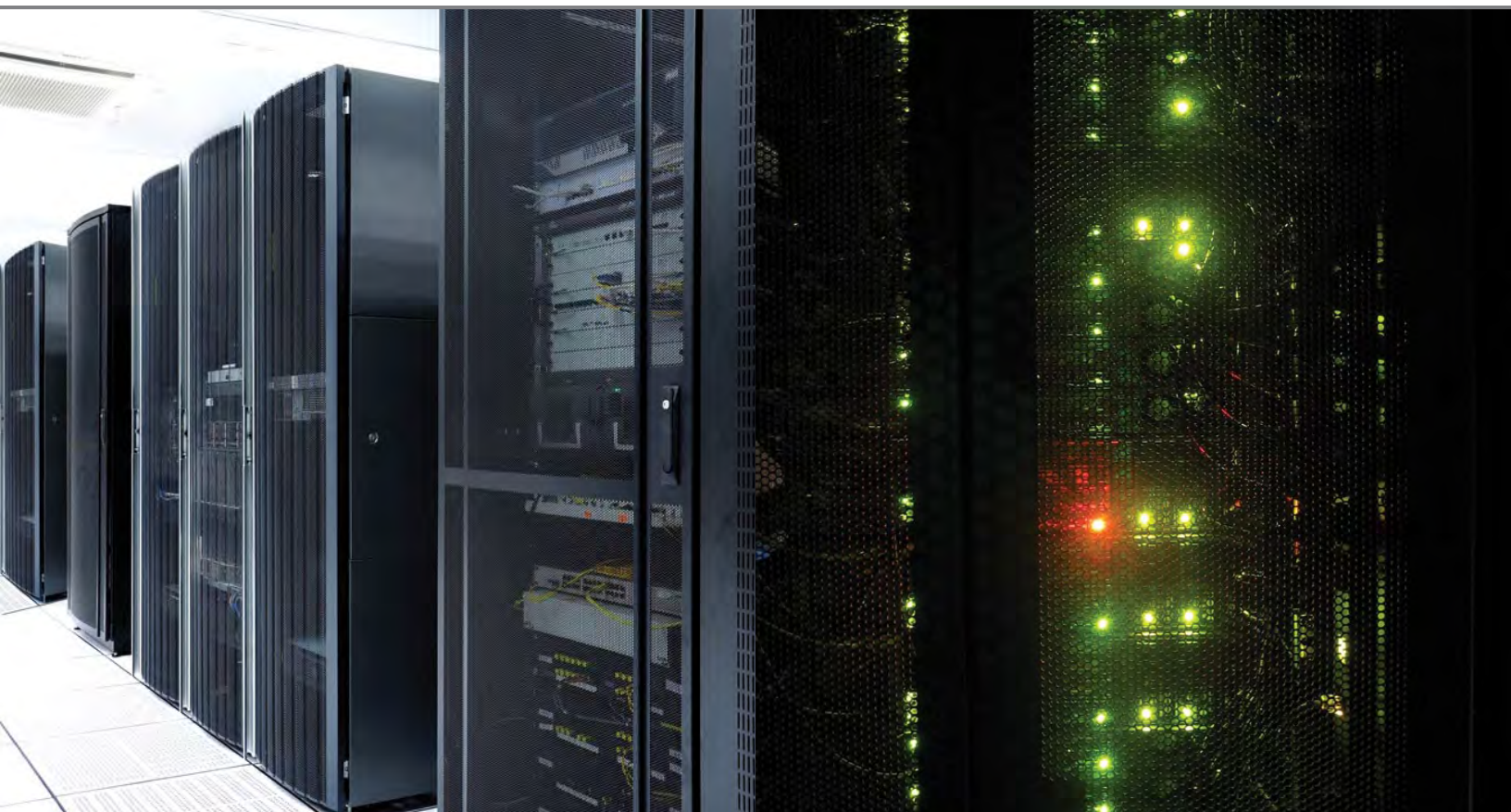


**TARGET**  
DISTRIBUTING  
**888.792.7463**  
**WWW.TARGETD.COM**

**✓ERICOM®**  
CABLING & COMMUNICATION SOLUTIONS







## Cabinet & Rack Solutions

### Cabinets

Standard Network Cabinets	2
Enhanced Ventilation Network Cabinets	4
Fully Vented Server Cabinets	6
Single Section Wall Mount Cabinets	8
Double Section Wall Mount Cabinets	10

### Racks

Steel Relay Racks: 2 Post	12
Steel Relay Racks: 4 Post	14
Steel Relay Racks: Expansion Kit	16
Aluminum Relay Rack Systems	17

### Cabinet & Rack Accessories

Shelves	18
Drawers	19
Panels	20
Cable Managers	21
Casters	23
Adjustable Feet	23

# Cabinets

## Standard Network Cabinets/ 42U and 47U

*A high quality, feature rich cabinet offered at a competitive price.*

### Compliance

- ANSI/EIA RS-310D
- IEC60297-2
- DIN41194; Part 1
- DIN41494; Part 7

### Construction

- Fully welded, black powder-coated cold rolled steel

### Loading Capacity

- High-static load rating up to 2867 lb (1300 kg)

### Features and Benefits

- Includes a lockable clear plexiglass front door and a lockable solid steel rear door.
- Entire cabinet can be fully assembled in less than 30 minutes.
- Includes two pairs of 19" EIA threaded hole mounting rails made from heavy-duty 14 gauge steel. Rails can be easily repositioned in 1 cm increments to accommodate various equipment depths.
- Pre-installed recessed casters combine convenient mobility with minimal added height, ensuring maximum stability.
- Removable half height side panels, doors that hinge on either side, and 180 degree door swings provide superior access for installation and maintenance of equipment.
- Adjustable sliding cable entries on the top and bottom panels provide flexibility in cable management.
- Vertical cable management channel can be adjusted in 1 cm increments.
- Four fan unit provides optimum ventilation.



RNCN2-68421

## Ordering Information

PART NUMBER	RU	DEPTH	WIDTH	HEIGHT
RNCN2-68421	42	31.5" (800 mm)	23.625" (600 mm)	79.75" (2025 mm)
RNCN2-68471	47	31.5" (800 mm)	23.625" (600 mm)	88.5" (2248 mm)
RNCN2-60421	42	42" (1067 mm)	23.625" (600 mm)	79.75" (2025 mm)
RNCN2-60471	47	42" (1067 mm)	23.625" (600 mm)	88.5" (2248 mm)



# Cabinets

## Standard Network Cabinets/ 42U and 47U

### Technical Specifications

ITEM/ SKU#		RNCN2-68421	RNCN2-68471	RNCN2-60421	RNCN2-60471
RACK UNIT QUANTITY		42	47	42	47
HEIGHT		79.75" (2025 mm)	88.5" (2248 mm)	79.75" (2025 mm)	88.5" (2248 mm)
WIDTH		23.625" (600 mm)	23.625" (600 mm)	23.625" (600 mm)	23.625" (600 mm)
DEPTH		31.5" (800 mm)	31.5" (800 mm)	42" (1067 mm)	42" (1067 mm)
THROW (OPENED DOOR SIZE)		54.75" (1390 mm)	54.75" (1390 mm)	65" (1650 mm)	65" (1650 mm)
WEIGHT		282 lb (128 kg)	305 lb (138 kg)	326 lb (148 kg)	353 lb (160 kg)
STATIC LOADING CAPACITY		2867 lb (1300 kg)			
MATERIAL THICKNESS	14 GAUGE	Rails and bottom connector bars			
	16 GAUGE	Top connector bars			
	18 GAUGE	Doors, top panel, side frame			
FRONT DOOR		Steel frame with full panel plexiglass window, two-point locking mechanism and left or right 180 degree swing			
REAR DOOR		Solid steel with two-point locking mechanism and left or right 180 degree swing			
SIDE PANELS		Removable and lockable half height panels			
NUMBERED RU MARKINGS		Yes			
HOLE TYPE		10-32 threaded			
FAN		(1) top mounted 4-fan unit (280 CFM total)			
FILLER PANEL		(1) 2U blank filler panel included			
FEET/ CASTERS		(4) pre-installed recessed casters and (4) optional adjustable feet			
HARDWARE INCLUDED		(48) 10-32 screws, (48) plastic washers, extra keys, allen wrench and all assembly hardware			

### Highlights

*Four fan unit for optimum air flow*



*Lockable doors for optimal security*



VERICOM Network Cabinets are shipped unassembled and flat packed to minimize shipping cost and simplify on-site handling.

# Cabinets

## Enhanced Ventilation Network Cabinets/ 42U and 47U

*All of the same great features of the Standard Network Cabinet, with added ventilation on both the front and rear doors.*

### Compliance

- ANSI/EIA RS-310D
- IEC60297-2
- DIN41194; Part 1
- DIN41494; Part 7

### Construction

- Fully welded, black powder-coated cold rolled steel

### Loading Capacity

- High-static load rating up to 2867 lb (1300 kg)

### Features and Benefits

- Includes a lockable clear plexiglass front door with a vented frame, and a lockable fully vented rear door.
- Entire cabinet can be fully assembled in less than 30 minutes.
- Includes two pairs of 19" EIA threaded hole mounting rails made from heavy-duty 14 gauge steel. Rails can be easily repositioned in 1 cm increments to accommodate various equipment depths.
- Pre-installed recessed casters combine convenient mobility with minimal added height, ensuring maximum stability.
- Removable half height side panels, doors that hinge on either side, and 180 degree door swings provide superior access for installation and maintenance of equipment.
- Adjustable sliding cable entries on the top and bottom panels provide flexibility in cable management.
- Vertical cable management channel can be adjusted in 1 cm increments.
- Four fan unit provides optimum ventilation.



RNCV2-60421

### Ordering Information

PART NUMBER	RU	WIDTH	DEPTH	HEIGHT
RNCV2-68421	42	23.625" (600 mm)	31.5" (800 mm)	79.75" (2025 mm)
RNCV2-68471	47	23.625" (600 mm)	31.5" (800 mm)	88.5" (2248 mm)
RNCV2-60421	42	23.625" (600 mm)	42" (1067 mm)	79.75" (2025 mm)
RNCV2-60471	47	23.625" (600 mm)	42" (1067 mm)	88.5" (2248 mm)

# Cabinets

## Enhanced Ventilation Network Cabinets/ 42U and 47U

### Technical Specifications

ITEM/ SKU#		RNCV2-68421	RNCV2-68471	RNCV2-60421	RNCV2-60471
RACK UNIT QUANTITY		42	47	42	47
HEIGHT		79.75" (2025 mm)	88.5" (2248 mm)	79.75" (2025 mm)	88.5" (2248 mm)
WIDTH		23.625" (600 mm)	23.625" (600 mm)	23.625" (600 mm)	23.625" (600 mm)
DEPTH		31.5" (800 mm)	31.5" (800 mm)	42" (1067 mm)	42" (1067 mm)
THROW (OPENED DOOR SIZE)		54.75" (1390 mm)	54.75" (1390 mm)	65" (1650 mm)	65" (1650 mm)
WEIGHT		277 lb (126 kg)	302 lb (137 kg)	326 lb (148 kg)	347 lb (157 kg)
STATIC LOADING CAPACITY		2867 lb (1300 kg)			
MATERIAL THICKNESS	14 GAUGE	Rails and bottom connector bars			
	16 GAUGE	Top connector bars			
	18 GAUGE	Doors, top panel, side frame			
FRONT DOOR		Vented steel frame with full panel plexiglass window, two-point locking mechanism and left or right 180 degree swing			
REAR DOOR		Fully vented steel with two-point locking mechanism and left or right 180 degree swing			
SIDE PANELS		Removable and lockable half height panels			
NUMBERED RU MARKINGS		Yes			
HOLE TYPE		10-32 threaded			
FAN		(1) top mounted 4-fan unit (280 CFM total)			
FILLER PANEL		(1) 2U blank filler panel included			
FEET/ CASTERS		(4) pre-installed recessed casters and (4) optional adjustable feet			
HARDWARE INCLUDED		(48) 10-32 screws, (48) plastic washers, extra keys, allen wrench, and all assembly hardware			

### Highlights

*Locking, removable side panels for easy access to equipment*



*Four fan unit for optimum air flow*

*Lockable doors with net holes for optimal ventilation and security*



*VERICOM Enhanced Ventilation Network Cabinets are shipped unassembled and flat packed to minimize shipping cost and simplify on-site handling.*



# Cabinets

## Fully Vented Server Cabinets/ 42U and 47U

*All of the same great features of the Enhanced Ventilation Network Cabinet, with premium fully vented front door and a split rear door.*

### Compliance

- ANSI/EIA RS-310D
- IEC60297-2
- DIN41194; Part 1
- DIN41494; Part 7

### Construction

- Fully welded, black powder-coated cold rolled steel

### Loading Capacity

- High-static load rating up to 2867 lb (1300 kg)

### Features and Benefits

- Includes fully vented front and rear doors.
- Entire cabinet can be fully assembled in less than 30 minutes.
- Includes two pairs of 19" EIA threaded hole mounting rails made from heavy-duty 14 gauge steel. Rails can be easily repositioned in 1 cm increments to accommodate various equipment depths.
- Pre-installed recessed casters combine convenient mobility with minimal added height, ensuring maximum stability.
- Removable half height side panels, doors that hinge on either side, and 180 degree door swings provide superior access for installation and maintenance of equipment.
- Adjustable sliding cable entries on the top and bottom panels provide flexibility in cable management.
- Vertical cable management channel can be adjusted in 1 cm increments.
- Four fan unit provides optimum ventilation.



RSCV2-60421

## Ordering Information

PART NUMBER	RU	WIDTH	DEPTH	HEIGHT
RSCV2-60421	42	23.625" (600 mm)	42" (1067 mm)	79.75" (2025 mm)
RSCV2-60471	47	23.625" (600 mm)	42" (1067 mm)	88.5" (2248 mm)



# Cabinets

## Fully Vented Server Cabinets/ 42U and 47U

### Technical Specifications

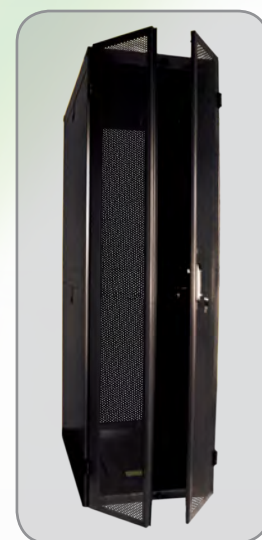
ITEM/ SKU#		RNCV2-68421	RNCV2-60421
RACK UNIT QUANTITY		42	47
HEIGHT		79.75" (2025 mm)	88.5" (2248 mm)
WIDTH		23.625" (600 mm)	23.625" (600 mm)
DEPTH		42" (1067 mm)	42" (1067 mm)
THROW (OPENED DOOR SIZE)		65" (1650 mm)	65" (1650 mm)
WEIGHT		320 lb (145 kg)	335 lb (152 kg)
STATIC LOADING CAPACITY		2867 lb (1300 kg)	
MATERIAL THICKNESS	14 GAUGE	Rails and bottom connector bars	
	16 GAUGE	Top connector bars	
	18 GAUGE	Doors, top panel, side frame	
FRONT DOOR		Fully vented steel with two-point locking mechanism and left or right 180 degree swing	
REAR DOOR		Fully vented steel split doors with two-point locking mechanism and 180 degree swing	
SIDE PANELS		Removable and lockable half height panels	
NUMBERED RU MARKINGS		Yes	
HOLE TYPE		10-32 threaded	
FAN		(1) top mounted 4-fan unit (280 CFM total)	
FILLER PANEL		(1) 2U blank filler panel included	
FEET/ CASTERS		(4) pre-installed recessed casters and (4) optional adjustable feet	
HARDWARE INCLUDED		(48) 10-32 screws, (48) plastic washers, extra keys, allen wrench, and all assembly hardware	

### Highlights

*Four fan unit for optimum air flow*



*Fully vented, lockable split rear doors*



*VERICOM Server Cabinets are shipped unassembled and flat packed to minimize shipping cost and simplify on-site handling.*

# Cabinets

## Single Section Wall Mount Cabinets

### Compliance

- ANSI/EIA RS-310D
- IEC60297-2
- DIN41194; Part 1
- DIN41494; Part 7

### Construction

- Fully welded, black powder-coated cold rolled steel

### Loading Capacity

- Up to 132 lb (60 kg)

### Features and Benefits

- 3/4 inch, 1 inch and 2 inch knockouts for pipe fittings or cable entry
- Cable entry on top and bottom
- Lace points reduce cable clutter
- Lockable plexiglass front door
- Removable 12 x 12 back panel
- Removable side panels are hinged to open 90 degrees
- Reversible right or left handed front door with 180 degree swing
- Assembles in 30 minutes or less



RSSN2-56151

*Lace points in rear panel  
reduce cable clutter*



## Ordering Information

PART NUMBER	RU	WIDTH	DEPTH	HEIGHT
RSSN2-56091	9	21.25" (540 mm)	23.625" (600 mm)	18" (460 mm)
RSSN2-56121	12	21.25" (540 mm)	23.625" (600 mm)	23.375" (595 mm)
RSSN2-56151	15	21.25" (540 mm)	23.625" (600 mm)	28.5" (725 mm)

# Cabinets

## Single Section Wall Mount Cabinets

### Technical Specifications

ITEM/ SKU#	RSSN2-56091	RSSN2-56121	RSSN2-56151
RACK UNIT QUANTITY	9	12	15
HEIGHT	18" (460 mm)	23.375" (595 mm)	28.5" (725 mm)
WIDTH	21.25" (540 mm)	21.25" (540 mm)	21.25" (540 mm)
DEPTH	23.625" (600 mm)	23.625" (600 mm)	23.625" (600 mm)
THROW*	42.25" (1072 mm)	42.25" (1072 mm)	42.25" (1072 mm)
WEIGHT	42 lb (19 kg)	46 lb (20.7 kg)	50 lb (22.9 kg)
STATIC LOADING CAPACITY	132 lb (60 kg)		
MATERIAL THICKNESS	16 gauge rails		
FRONT DOOR	Lockable steel frame with full panel plexiglass window and left or right 180 degree swing		
SIDE PANELS	Hinged and removable		
NUMBERED RU MARKINGS	Yes		
HOLE TYPE	10-32 threaded		
HARDWARE INCLUDED	(48) 10-32 screws, (48) plastic washers, extra keys, allen wrench and all assembly hardware		

### Highlights

*Ventilation helps keep equipment cool*



*Interior view of lace points and vents*



*VERICOM Single Section Wall Mount Cabinets are shipped unassembled and flat packed to minimize shipping cost and simplify on-site handling.*



# Cabinets

## Double Section Wall Mount Cabinets

### Compliance

- ANSI/EIA RS-310D
- IEC60297-2
- DIN41194; Part 1
- DIN41494; Part 7

### Construction

- Fully welded, black powder-coated cold rolled steel

### Loading Capacity

- Up to 100 lb (45 kg)

### Features and Benefits

- 3/4 inch, 1 inch and 2 inch knockouts for pipe fittings and cable entry
- Cable entry on top and bottom
- Lace points reduce cable clutter
- Lockable plexiglass front door
- Rear section opens from either side and is removable for easier installation
- Rear hinge allows the cabinet to swing out 90 degrees from the wall for convenient access to cables and connections at the back of equipment
- Removable 12 x 12 back panel
- Reversible right or left-handed front door with 180 degree swing
- Assembles in 30 minutes or less



RDSN2-56121

*Lace points in rear panel  
reduce cable clutter*



## Ordering Information

PART NUMBER	RU	WIDTH	DEPTH	HEIGHT
RDSN2-56091	9	21.25" (540 mm)	23.625" (600 mm)	18" (460 mm)
RDSN2-56121	12	21.25" (540 mm)	23.625" (600 mm)	23.375" (595 mm)
RDSN2-56151	15	21.25" (540 mm)	23.625" (600 mm)	28.5" (725 mm)

# Cabinets

## Double Section Wall Mount Cabinets

### Technical Specifications

ITEM/ SKU#	RSSN2-56091	RSSN2-56121	RSSN2-56151
RACK UNIT QUANTITY	9	12	15
HEIGHT	18" (460 mm)	23.375" (595 mm)	28.5" (725 mm)
WIDTH	21.25" (540 mm)	21.25" (540 mm)	21.25" (540 mm)
DEPTH	23.625" (600 mm)	23.625" (600 mm)	23.625" (600 mm)
THROW*	40.25" (1022 mm)	40.25" (1022 mm)	40.25" (1022 mm)
WEIGHT	44 lb (20 kg)	51 lb (23 kg)	58 lb (26.4 kg)
STATIC LOADING CAPACITY	100 lb (45 kg)		
MATERIAL THICKNESS	16 gauge rails		
FRONT DOOR	Lockable steel frame with full panel plexiglass window and left or right 180 degree swing		
REAR DOOR	Rear hinge allows cabinet to swing out from wall 90 degrees from either left or right corner		
SIDE PANELS	Hinged and removable		
NUMBERED RU MARKINGS	Yes		
HOLE TYPE	10-32 threaded		
HARDWARE INCLUDED	(48) 10-32 screws, (48) plastic washers, extra keys, allen wrench and all assembly hardware		

### Highlights

*Ventilation in top panel helps keep equipment cool*



*Access equipment from the front and back*



*VERICOM Double Section Wall Mount Cabinets are shipped unassembled and flat packed to minimize shipping cost and simplify on-site handling.*

# Racks

## Steel Relay Racks: 2 Post

### Compliance

- ANSI/EIA RS-310D
- IEC60297-2
- DIN41194; Part 1
- DIN41494; Part 7

### Material

- Fully welded, black powder-coated cold rolled steel

### Loading Capacity

- Up to 550 lb (250 kg)

### Features and Benefits

- Both threaded and cage hole mounting profiles
- Includes adjustable feet or can be floor mounted
- Ships in an economical flat pack container
- Standard EIA-310-D hole spacing
- Supports 19-inch EIA equipment
- Unrestricted airflow for maximum ventilation
- Assembles in 30 minutes or less



## Ordering Information

RORAE-66421

PART NUMBER	RU	WIDTH	DEPTH	HEIGHT
RORAE-66421	42	23.625" (600 mm)	23.625" (600 mm)	78.75" (2000 mm)
RORAE-66471	47	23.625" (600 mm)	23.625" (600 mm)	87.5" (2223 mm)



# Racks

## Steel Relay Racks: 2 Post

### Technical Specifications

ITEM/ SKU#	RORAE-66421	RORAE-66471
RACK UNIT QUANTITY	42	47
HEIGHT	78.75" (2000 mm)	87.5" (2223 mm)
WIDTH	23.625" (600 mm)	23.625" (600 mm)
DEPTH	23.625" (600 mm)	23.625" (600 mm)
WEIGHT	55 lb (25 kg)	61 lb (28 kg)
STATIC LOADING CAPACITY	550 lb (250 kg)	
MATERIAL THICKNESS	(14 gauge) all components other than decorative cover plate	
HOLE TYPE	10-32 threaded and cage	
FEET/ CASTERS	(4) adjustable feet or floor mounted	
HARDWARE INCLUDED	(48) 10-32 screws, (48) plastic washers, (48) cage nuts, and all assembly hardware	

### Highlights

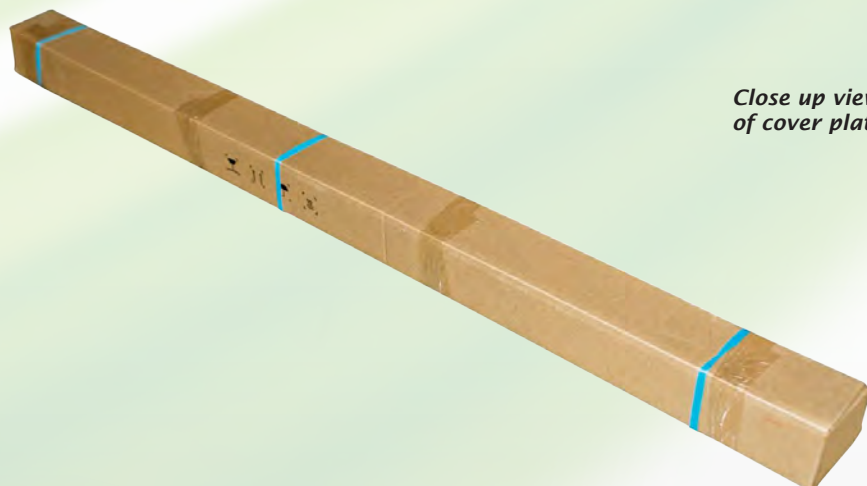
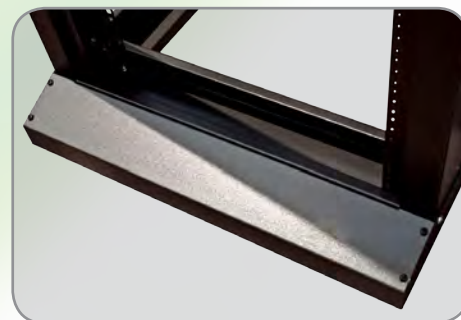
*Equipped with threaded and cage hole profiles*



*Includes 4 adjustable feet standard*



*Close up view of cover plate*



**VERICOM 2 Post Steel Relay Racks are shipped unassembled and flat packed to minimize shipping cost and simplify on-site handling.**

# Racks

## Steel Relay Racks: 4 Post

### Compliance

- ANSI/EIA RS-310D
- IEC60297-2
- DIN41194; Part 1
- DIN41494; Part 7

### Material

- Fully welded, black powder-coated cold rolled steel

### Loading Capacity

- Up to 550 lb (250 kg)

### Features and Benefits

- Both threaded and cage hole mounting profiles
- Includes adjustable feet or can be floor mounted
- Ships in an economical flat pack container
- Standard EIA-310-D hole spacing
- Supports 19-inch EIA equipment
- Unrestricted airflow for maximum ventilation
- Assembles in 30 minutes or less



RDRAE-66421

## Ordering Information

PART NUMBER	RU	WIDTH	DEPTH	HEIGHT
RDRAE-66421	42	23.625" (600 mm)	23.625" (600 mm)	78.75" (2000 mm)
RDRAE-66471	47	23.625" (600 mm)	23.625" (600 mm)	87.5" (2223 mm)

# Racks

## Steel Relay Racks: 4 Post

### Technical Specifications

ITEM/ SKU#	RDRAE-66421	RDRAE-66471
RACK UNIT QUANTITY	42	47
HEIGHT	78.75" (2000 mm)	87.5" (2223 mm)
WIDTH	23.625" (600 mm)	23.625" (600 mm)
DEPTH	23.625" (600 mm)	23.625" (600 mm)
WEIGHT	101 lb (46 kg)	110 lb (46 kg)
STATIC LOADING CAPACITY	550 lb (250 kg)	
MATERIAL THICKNESS	(14 gauge) all components other than decorative cover plate	
HOLE TYPE	10-32 threaded and cage	
FEET/ CASTERS	(4) adjustable feet or floor mounted	
HARDWARE INCLUDED	(48) 10-32 screws, (48) plastic washers, (48) cage nuts, and all assembly hardware	

### Highlights

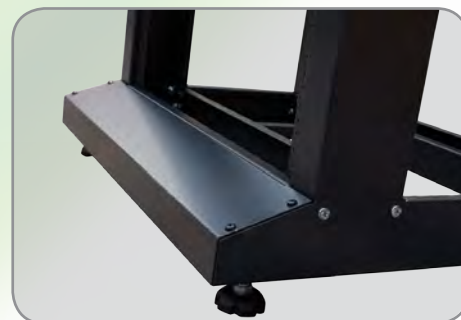
*Equipped with threaded and cage hole profiles*



*Brackets and screws make for a quick and easy assembly*



*Close up view of cover plate*



**VERICOM 4 Post Steel Relay Racks are shipped unassembled and flat packed to minimize shipping cost and simplify on-site handling.**



# Racks

## Steel Relay Racks: Expansion Kit

### Compliance

- ANSI/EIA RS-310D
- IEC60297-2
- DIN41194; Part 1
- DIN41494; Part 7

### Material

- Fully welded, black powder-coated cold rolled steel

### Loading Capacity

- Up to 550 lb (250 kg)

### Features and Benefits

- Expands a 2 post rack to a 4 post rack

### Technical Specifications

ITEM/ SKU#	RACEX-00460	RACEX-00461
RACK UNIT QUANTITY	42	47
HEIGHT	78.75" (2000 mm)	87.5" (2223 mm)
WIDTH	23.625" (600 mm)	23.625" (600 mm)
WEIGHT	46 lb (21 kg)	50 lb (23 kg)
STATIC LOADING CAPACITY	550 lb (250 kg)	
MATERIAL THICKNESS	14 gauge	
HOLE TYPE	10-32 threaded and cage	
HARDWARE INCLUDED	All assembly hardware	



RACEX-00460

*\*View of this product is from the rear of the 4 Post Expansion Kit*

*\*Expansion Kit includes all areas in image that are black*



*VERICOM Steel Relay Rack Expansion Kits are shipped unassembled and flat packed to minimize shipping cost and simplify on-site handling.*

### Ordering Information

PART NUMBER	RU	WIDTH	HEIGHT
RACEX-00460	42	23.625" (600 mm)	78.75" (2000 mm)
RACEX-00461	47	23.625" (600 mm)	87.5" (2223 mm)

# Racks

## Aluminum Relay Rack Systems

### Compliance

- ANSI/EIA RS-310D
- DIN41194; Part 1
- IEC60297-2
- DIN41494; Part 7

### Material

- 4.0 mm aluminum plate

### Loading Capacity

- Up to 330 lb (150 kg)

### Features and Benefits

- Available in two heights
- Designed for floor mounting
- RU markings for faster equipment mounting
- Ships in an economical flat pack container for ultimate protection and reduced shipping cost
- Standard EIA-310-D hole spacing
- Supports 19-inch EIA equipment
- Threaded hole mounting profile

### Technical Specifications

ITEM/ SKU#	RARAE-53421	RARAE-53471
RACK UNIT QUANTITY	42	47
HEIGHT	78.5" (1997 mm)	87.5" (2223 mm)
WIDTH	20.25" (514 mm)	20.25" (514 mm)
DEPTH	15" (380 mm)	15" (380 mm)
WEIGHT	19 lb (8.6 kg)	23 lb (10.4 kg)
STATIC LOADING CAPACITY	331 lb (150 kg)	
MATERIAL THICKNESS	4.0 mm aluminum plate	
NUMBERED RU MARKINGS	Yes	
HOLE TYPE	10-32 threaded	
FEET/ CASTERS	N/A - floor mounted only	
HARDWARE INCLUDED	(48) 10-32 screws and (48) plastic washers	



RARAE-53421

### Ordering Information

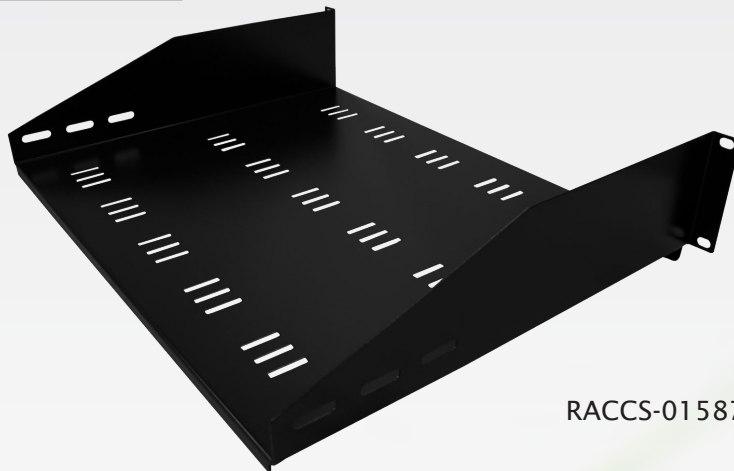
PART NUMBER	RU	WIDTH	DEPTH	HEIGHT
RARAE-53421	42	20.25" (514 mm)	15" (380 mm)	78.5" (1997 mm)
RARAE-53471	47	20.25" (514 mm)	15" (380 mm)	87.5" (2223 mm)

# Cabinet & Rack Accessories

## Shelf: Cantilever Shelf with Vent Holes

### Features

- Material: Black powder-coated cold rolled steel
- Used primarily for relay racks, but can also be used with cabinets
- Requires 2U for mounting
- Available in 3 depths: 12 Inch, 14 Inch, and 16 Inch



RACCS-01587

### Technical Specifications

ITEM/ SKU#	RACCS-01587	RACCS-01588	RACCS-01589
RACK UNIT QUANTITY	2	2	2
HEIGHT	4" (102 mm)	4" (102 mm)	4" (102 mm)
WIDTH	19" (483 mm)	19" (483 mm)	19" (483 mm)
DEPTH	12" (305 mm)	14" (356 mm)	16" (406 mm)
WEIGHT	3.9 lb (1.77 kg)	4.4 lb (2 kg)	6.5 lb (2.95 kg)
COMPATIBILITY	All cabinets and racks		

### Ordering Information

PART NUMBER	DEPTH
RACCS-01587	12"
RACCS-01588	14"
RACCS-01589	16"

## Shelf: Fixed Shelf

### Features

- Material: Black powder-coated cold rolled steel
- Used for 19 Inch network and server cabinets
- Static load capacity: 198 lb (90 kg)
- Available in 2 sizes: 21.5 Inch and 28.5 Inch Depth



RACFS-01590

### Technical Specifications

ITEM/ SKU#	RACFS-01590	RACFS-01591
RACK UNIT QUANTITY	1	1
HEIGHT	1.25" (32 mm)	1.25" (32 mm)
WIDTH	19.25" (489 mm)	19.25" (489 mm)
DEPTH	21.5" (546 mm)	28.25" (718 mm)
WEIGHT	6.2 lb (2.81 kg)	8.3 lb (3.76 kg)
COMPATIBILITY	All network and server cabinets (not compatible with wall mount cabinets or racks)	1067 mm depth cabinets only (not compatible with wall mount cabinets or racks)

### Ordering Information

PART NUMBER	DEPTH
RACFS-01590	21.5"
RACFS-01591	28.5"



# Cabinet & Rack Accessories

## Shelf: Keyboard Shelf

### Features

- Material: Black powder-coated cold rolled steel
- Used for 19 Inch network and server cabinets
- Accommodates keyboards up to 400 mm in width
- Available in 2 depths: RACKS-00847 for mounting in the 800 mm Depth Cabinets and RACKS-01592 for mounting in the 1067 mm Depth Cabinets



RACKS-01592

### Technical Specifications

ITEM/ SKU#	RACKS-00847	RACKS-01592
RACK UNIT QUANTITY	1	1
HEIGHT	2.375" (60 mm)	2.375" (60 mm)
WIDTH	19" (483 mm)	19" (483 mm)
DEPTH	14.75" - 26" (375 mm - 660 mm)	23"-36" (584 mm - 914 mm)
WEIGHT	7.9 lb (3.6 kg)	8.45 lb (3.83 kg)
COMPATIBILITY	800 mm depth cabinets (not compatible with wall mount cabinets or racks)	1067 mm depth cabinets (not compatible with wall mount cabinets or racks)

### Ordering Information

PART NUMBER	DEPTH
RACKS-00847	14.75" - 26"
RACKS-01592	23" - 36"

## Drawer: Locking Drawer

### Features

- Material: Black powder-coated cold rolled steel
- Used primarily for 19 inch network and server cabinets, but can be used for relay racks
- Includes a knockout for power supply to a laptop
- Static load capacity: 77 lb (35 kg)
- Available in 2U and 3U
- Additional information available at [vericom solutions.com](http://vericom solutions.com)



RACLD-01560

### Ordering Information

PART NUMBER	RU
RACLD-01559	2
RACLD-01560	3

# Cabinet & Rack Accessories

## Panel: Blank Filler Panel

### Features

- Material: Black powder-coated cold rolled steel
- For covering unused rack spaces and improving airflow
- Available in 1U, 2U, 3U, 4U



RACBP-01593

### Technical Specifications

ITEM/ SKU#	RACBP-01593	RACBP-01594	RACBP-01595	RACBP-01596
RACK UNIT QUANTITY	1	2	3	4
HEIGHT	1.75" (44 mm)	3.5" (89 mm)	5.25" (133 mm)	7" (178 mm)
WIDTH	19" (483 mm)	19" (483 mm)	19" (483 mm)	19" (483 mm)
DEPTH	0.375" (10 mm)	0.375" (10 mm)	0.375" (10 mm)	0.375" (10 mm)
WEIGHT	0.5 lb (0.227 kg)	1 lb (0.45 kg)	1.4 lb (0.64 kg)	1.5 lb (0.68 kg)
COMPATIBILITY	All cabinets and racks			

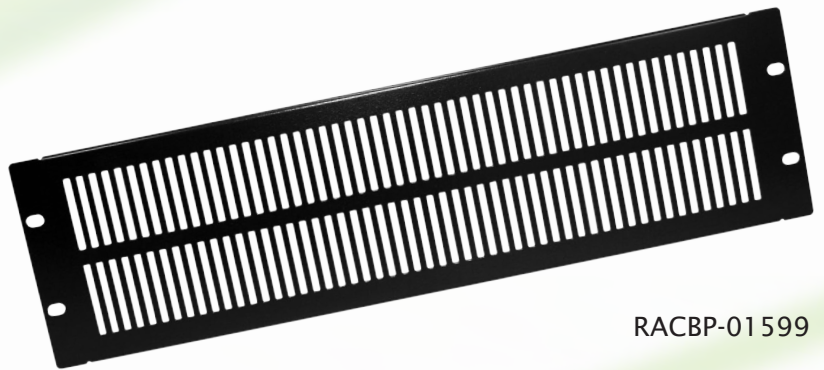
### Ordering Information

PART NUMBER	RU
RACBP-01593	1
RACBP-01594	2
RACBP-01595	3
RACBP-01596	4

## Panel: Filler Panel with Vents

### Features

- Material: Black powder-coated cold rolled steel
- For covering unused rack spaces
- Vents offer customization and cooling efficiency
- Available in 1U, 2U, 3U, 4U



RACBP-01599

### Technical Specifications

ITEM/ SKU#	RACBP-01597	RACBP-01598	RACBP-01599	RACBP-01600
RACK UNIT QUANTITY	1	2	3	4
HEIGHT	1.75" (44 mm)	3.5" (89 mm)	5.25" (133 mm)	7" (178 mm)
WIDTH	19" (483 mm)	19" (483 mm)	19" (483 mm)	19" (483 mm)
DEPTH	0.375" (10 mm)	0.375" (10 mm)	0.375" (10 mm)	0.375" (10 mm)
WEIGHT	0.5 lb (0.227 kg)	1 lb (0.45 kg)	1.4 lb (0.64 kg)	1.5 lb (0.68 kg)
COMPATIBILITY	All cabinets and racks			

### Ordering Information

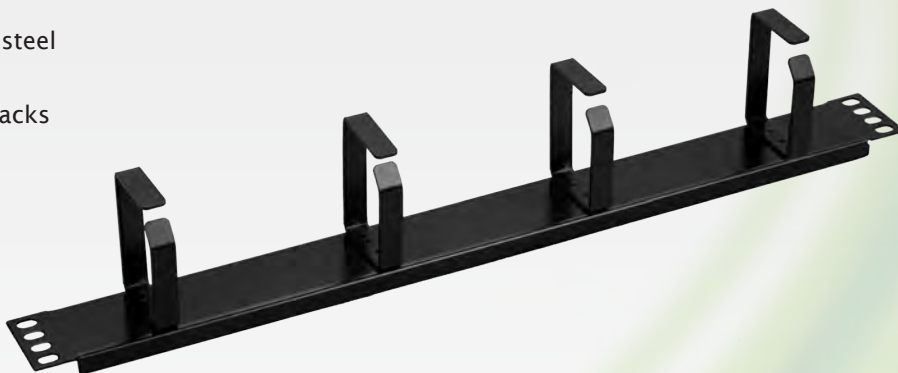
PART NUMBER	RU
RACBP-01597	1
RACBP-01598	2
RACBP-01599	3
RACBP-01600	4

# Cabinet & Rack Accessories

## Cable Manager: Finger

### Features

- Material: Black powder-coated cold rolled steel
- Available in 1U size
- Mountable to standard 19" cabinets and racks
- Minimizes clutter and promotes organization based on individual needs
- Offers versatility



### Technical Specifications

ITEM/ SKU#	RACCM-01604
RACK UNIT QUANTITY	1
HEIGHT	1.75" (44 mm)
WIDTH	19" (483 mm)
DEPTH	3.125" (79 mm)
WEIGHT	1 lb (0.45 kg)
COMPATIBILITY	All cabinets and racks

### Ordering Information

PART NUMBER	DESCRIPTION
RACCM-01604	Finger Type Cable Manager

## Cable Manager: Slot

### Features

- Material: Black powder-coated cold rolled steel
- Available in 1U size
- Mountable to standard 19" cabinets and racks
- Minimizes clutter and promotes organization based on individual needs
- Offers versatility
- Two piece, snaps together



### Technical Specifications

ITEM/ SKU#	RACCM-01605
RACK UNIT QUANTITY	1
HEIGHT	1.75" (44 mm)
WIDTH	19" (483 mm)
DEPTH	3.125" (79 mm)
WEIGHT	1.7 lb (0.77 kg)
COMPATIBILITY	All cabinets and racks

### Ordering Information

PART NUMBER	DESCRIPTION
RACCM-01605	Slot Type Cable Manager



# Cabinet & Rack Accessories

## Cable Manager: Brush

### Features

- Material: Black powder-coated cold rolled steel
- Available in 1U size
- Mountable to standard 19" cabinets and racks
- Minimizes clutter and promotes organization based on individual needs
- Offers versatility



*Brush bristles provide maximum flexibility in cable management*



### Technical Specifications

ITEM/ SKU#	RACCM-01606
RACK UNIT QUANTITY	1
HEIGHT	1.75" (44 mm)
WIDTH	19" (483 mm)
DEPTH	0.5" (13 mm)
WEIGHT	0.5 lb (0.23 kg)
COMPATIBILITY	All cabinets and racks

### Ordering Information

PART NUMBER	DESCRIPTION
RACCM-01606	Brush Type Cable Manager

Call VERICOM for More Information  
865.671.4455

# Cabinet & Rack Accessories

## Cabinet & Rack Casters: Two Inch Casters

### Features

- 360 degree swivel
- Allows for ease of movement
- Sold in packs of 2

### Technical Specifications

ITEM/ SKU#	RACCA-00462		
HEIGHT	2.75" (70 mm)	DEPTH	3" (76 mm)
WIDTH	2.125" (54 mm)	WEIGHT	2.7 lb (1.225 kg)
COMPATIBILITY	All network and server cabinets (not compatible with wall mount cabinets or aluminum racks)		

### Ordering Information

PART NUMBER	Type
RACCA-00462	Casters



## Cabinet & Rack Casters: Lockable Brake Casters

### Features

- 360 degree swivel
- Allows for ease of movement with the ability to lock in place
- Sold in packs of 2

### Technical Specifications

ITEM/ SKU#	RACCA-01602		
HEIGHT	2.75" (70 mm)	DEPTH	3" (76 mm)
WIDTH	2.125" (54 mm)	WEIGHT	2.8 lb (1.27 kg)
COMPATIBILITY	All network and server cabinets (not compatible with wall mount cabinets or aluminum racks)		

### Ordering Information

PART NUMBER	Type
RACCA-01602	Lockable Brake Casters



## Cabinet & Rack Feet: Adjustable Feet

### Features

- Slip-resistant material on bottom pads
- Sold in packs of 4

### Technical Specifications

ITEM/ SKU#	RACAF-01603		
HEIGHT	3.875" (98 mm)	DEPTH	1.5" (38 mm)
WIDTH	1.5" (38 mm)	WEIGHT	1.1 lb (0.5 kg)
COMPATIBILITY	All network cabinets, server cabinets and steel racks		

### Ordering Information

PART NUMBER	Type
RACAF-01603	Adjustable Feet



# Cabinet & Rack Feature Comparison

ITEM		SINGLE SECTION WALL MOUNT	DOUBLE SECTION WALL MOUNT	2 POST ALUMINUM RACK	2 POST STEEL RACK	4 POST STEEL RACK	STANDARD NETWORK CABINET	ENHANCED VENTILATION NETWORK CABINET	FULLY VENTED SERVER CABINET
AVAILABLE RU SIZE		9, 12, 15	9, 12, 15	42, 47	42, 47	42, 47	42, 47	42, 47	42, 47
STATIC LOADING CAPACITY (Lb)		66	66	330	550	550	2,866	2,866	2,866
STANDARD 19" EIA SPACING		X	X	X	X	X	X	X	X
ADJUSTABLE DEPTH		X	X				X	X	X
10-32 THREADED HOLES		X	X	X	X	X	X	X	X
CAGE HOLES					X	X			
RU MARKINGS		X	X	X			X	X	X
VERTICAL CABLE MANAGEMENT CHANNEL							X	X	X
DOORS	LOCKABLE	X	X				X	X	X
	REVERSIBLE	X	X				X	X	X
	180 DEGREE SWING	X	X				X	X	X
	FRONT	FULL PLEXIGLASS WINDOW w/ STEEL FRAME	X	X			X		
		FULL PLEXIGLASS WINDOW w/ VENTED STEEL FRAME						X	
		FULLY VENTED STEEL							X
	REAR	SOLID STEEL					X		
		FULLY VENTED STEEL						X	
		FULLY VENTED SPLIT STEEL							X
SIDE PANELS	REMOVABLE	X					X	X	X
	LOCKABLE	X					X	X	X
	HINGED	X							
	FULL PANEL	X							
	HALF HEIGHT						X	X	X
SWING OUT SECTION			X						
REMOVABLE REAR PANEL		X	X						
FAN							X	X	X
ADJUSTABLE CABLE ENTRY - TOP							X	X	X
KNOCKOUT CABLE ENTRY - TOP		X	X						
ADJUSTABLE CABLE ENTRY - BOTTOM							X	X	X
KNOCKOUT CABLE ENTRY - BOTTOM		X	X						
PRE-INSTALLED CASTERS							X	X	X
ADJUSTABLE LEVELING FEET					X	X	X	X	X
FLAT PACKED		X	X	X	X	X	X	X	X
ASSEMBLED < 30 MINUTES		X	X	X	X	X	X	X	X

Call VERICOM for More Information  
865.671.4455







**VERICOM Global Solutions**

10025 Investment Avenue, Suite 120

Knoxville, TN 37932

[www.vericomsolutions.com](http://www.vericomsolutions.com)

twitter: @\_VERICOM\_

865.671.4455