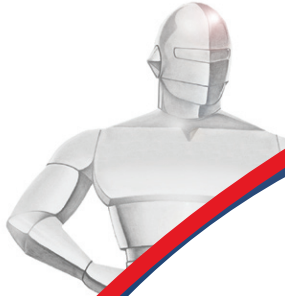


PRO500E(IE) - 500VA/300W • PRO700E(IE) - 700VA/490W  
PRO1100E(IE) - 1100VA/700W • PRO1500E(IE) - 1500VA/1050W



### **HIGH-QUALITY PROTECTION WITH A COMPACT DESIGN**

The Minuteman® PRO-E™ Series of Uninterruptible Power Supplies (UPS) from Para Systems delivers complete protection from electrical problems — spikes, surges, sags, brownouts and blackouts. PRO-E models are amazingly compact and take up little space on a desktop or under a console. The PRO500E and PRO700E units provide an ample power source for a computer, monitor and other attached devices with four battery backup outlets with surge protection and two surge-only outlets. The PRO1100E and PRO1500E models are only slightly larger in physical size, yet each offers an expansive six outlets with battery backup and surge protection and heavy power-handling capabilities found in much larger-sized models. This size-to-power ratio makes them ideal for high-power requirement devices installed in cramped quarters. Units designated with an "IE" in the product number have 230V output, e.g. PRO500IE UPS.

### **ENHANCED FEATURES WITH PRO-E UPS SYSTEMS**

Each PRO-E model has enhanced features from its predecessors like built-in automatic voltage regulation (AVR) technology to provide a double-boost to incoming AC during low voltage situations in addition to single-buck which trims the AC during a high voltage situation, preserving vital battery backup power for blackouts, and extending the life of the batteries. Unlike some competitive models, the PRO-E model includes independent battery bypass which allows it to provide AVR and surge and spike protection with weak or even dead batteries without dropping the load from utility AC power. Other features include adjustable input and output voltage ranges for AC

mode and on-battery voltage to allow a steady 120 or 127 volts via DIP switches on the back of each PRO-E model. Each unit also includes protection for either a network or a phone line to keep damaging AC surges and spikes from entering through those pathways. 230 volt models have network protection only.

### **POWER MANAGEMENT SOFTWARE INCLUDED**

To gain complete control over monitoring and managing your UPS using a convenient web browser-based interface, install the included Minuteman Sentryll™ power management and diagnostic software onto a workstation or server. You also have the ability to download the newer SentryPlus™ software. Both allow scheduled and unattended graceful shutdown of a computer, user-configurable responses to power events, and automatic notification of events via e-mail, network, or pager

### **RELIABILITY — GUARANTEED**

Minuteman PRO-E units are backed by an unprecedented 3-year warranty that covers all parts and labor. The Minuteman Platinum Protection Plan® insures properly connected equipment for up to \$50,000 (U.S. and Canada only).

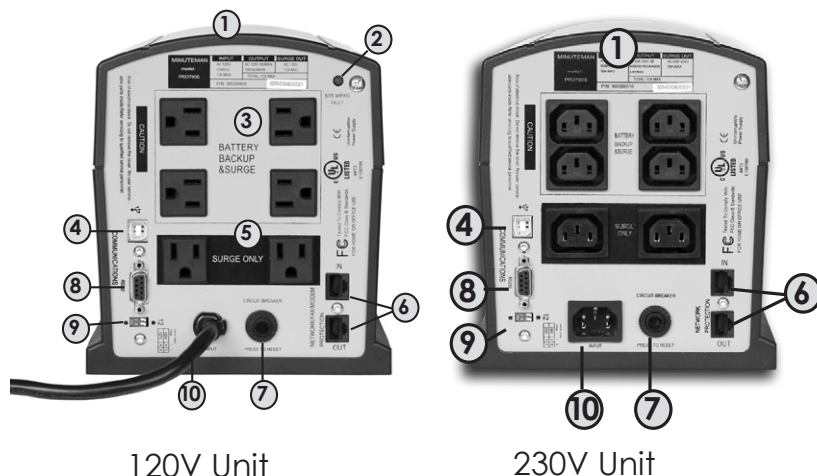
### **PRO-E UPS APPLICATIONS**

- **PCs**
- **Telephone Systems**
- **Data Communications**

# Minuteman® PRO-E™ Series Line Interactive UPS Specifications

Model (230V in parenthesis)	PRO500E (PRO500iE)	PRO700E (PRO700iE)	PRO1100E (PRO1100iE)	PRO1500E (PRO1500iE)
VA • Watts	500 • 350	700 • 490	1100 • 770	1500 • 1050
Topology	Line interactive			
Agency approvals	UL 1778, cUL, CE, FCC class B, (UL1449 compliant)			
Warranty	3-years parts and labor			
Equipment protection policy	Up to \$50,000 (U.S. and Canada only)			
Battery-backup / Surge-protected outlets	4 NEMA 5-15R (4 IEC 320)		6 NEMA 5-15R (6 IEC 320)	
Surge-only outlets	2 NEMA 5-15R (2 IEC 320)		-	
Input (non-battery operation)				
Voltage range • Frequency range	Default settings: 75V to 145V (150V to 280V) • 50/60Hz auto-sensing ± 6Hz			
Output (non-battery operation)				
Voltage range	120V setting: 105V to 130V, 127V setting: 105V to 136V (230V setting: 206V to 250V, 208V setting: 198V to 250V)			
Frequency	50/60Hz ± 6Hz			
Surge protection	500 Joules (440 Joules)			
Output (battery operation)				
Voltage	Default 120V (230V) Adjustable 127V (208V)			
Voltage regulation	±1% until low battery warning (±2% until low battery warning)			
Frequency	±0.5% unless synchronized to AC line			
Wave form	Step simulated sinewave			
Typical transfer time	2-6 ms			
Interface and Indicators				
Communications port	Universal Serial Bus (USB) communications cable, RS-232 cable and Minuteman SentryII™ power management and diagnostic software included			
LED status indicators	AC normal, boost mode, buck mode, battery mode, internal fault, over-current, battery fault (weak, bad or disconnected battery), site-wiring fault			
Audible alarms	On battery, low battery, internal fault, over-current, battery weak battery bad, or battery disconnected			
Battery System				
Hot swappable battery • Internal battery	Yes • Yes			
Battery type	1-12V9Ah	2-12V7Ah	3-12V7Ah	3-12V9Ah
Battery system	12VDC	24VDC	36VDC	
Typical recharge	8 hours to 90% from total discharge			
Mechanical				
Net dimensions H x W x D in (mm)	7.56 x 6.3 x 12.5 in (192 x 162 x 319 mm)		8.03 x 6.38 x 16.18 in (204 x 162 x 411 mm)	
Net weight lbs. (kg)	20.3 lb (9.2 kg)	27.3 lb (12.4 kg)	39.2 lb (17.8 kg)	42.3 lb (19.2 kg)
Shipping dimensions H x W x D	13.0 x 11.4 x 18.9 in (330 x 290 x 480 mm)		13.0 x 12.6 x 22.8 in (330 x 320 x 580 mm)	
Shipping weight lbs. (kg)	23.0 lb (10.4 kg)	30.0 lb (13.6 kg)	43.0 lb (19.5 kg)	47.0 lb (21.3 kg)

\*User may adjust the inverter output voltage and the boost/buck transfer points via DIP switches on the rear panel



## PRODUCT FEATURES

- 1) Includes built-in automatic voltage regulator (AVR)
- 2) Site-wiring fault indicator (120V models only)
- 3) Battery backup & surge protected outlets
- 4) USB communication port
- 5) Surge protection only outlets (500 & 700 VA only)
- 6) RJ-45 / RJ-11 network/modem/fax protection (230 volt models have network protection only)
- 7) AC input circuit breaker
- 8) RS-232 communication port
- 9) Inverter output voltage, voltage boost/buck DIP switches
- 10) AC input power cord / AC power inlet

### Para Systems, Inc./Minuteman UPS

1455 LeMay Drive, Carrollton, TX 75007 U.S.A.  
Phone 800.238.7272 +1 972.446.7363 Fax +1 972.446.9011

© Copyright 2007, Para Systems, Inc. Product specifications are subject to change without notice. Minuteman and Minuteman Platinum Protection Plan are registered trademarks and PRO-E, SentryII and SentryPlus are trademarks of Para Systems, Inc.

[www.minutemanups.com](http://www.minutemanups.com) • [www.sizemyups.com](http://www.sizemyups.com) • [www.sizemypdu.com](http://www.sizemypdu.com) • [www.comparemyups.com](http://www.comparemyups.com)

PN-34000233 - 8-07

