

SSL and IPsec VPN Tunnels for Secure Remote Network Access



50-user Office VPN Router

NETGEAR's ProSafe Dual WAN Gigabit Firewall with SSL & IPsec VPN offers the best of both worlds by offering two types of virtual private network (VPN) tunnels, Secure Sockets Layer (SSL) and IP security (IPsec), for optimal secure connection to your network. SSL VPN tunnels provide clientless remote access to your corporate data for individual access anywhere and anytime while IPsec VPN tunnels provide both secure site-to-site tunnels and legacy support for client-based remote access. Backed by a true firewall, this VPN router is a high-performance, SNMP-manageable, network solution that furnishes multidimensional security including denial-of-service (DoS) protection, stateful packet inspection (SPI), URL keyword filtering, logging, reporting, and real-time alerts. Four Gigabit LAN ports keep your data moving at top speed while two Gigabit WAN ports provide load-balancing and failover protection to ensure maximum throughput and reliable connectivity to the Internet. With Network Address Translation (NAT) routing and classical routing, up to 253 users can access your broadband connection at the same time.

Secure

The FVS336G takes care of all your security needs, with support of up to 25 IPsec VPN tunnels and 10 SSL VPN tunnels simultaneously, hacker protection via SPI firewall, DoS attack protection, and multiple VPN pass-through. SYSLOG and email reporting enable thorough network monitoring. IKE authentication provides peace of mind against unauthorized VPN network access. The SSL VPN tunnels support industry-strength encryption algorithms and features such as automatic cache cleanup after session termination to ensure protection and privacy of your sensitive data. Dedicated DMZ port allows you to segregate externally accessible assets (i.e. Web servers) from internal PCs. The ProSafe Dual WAN Gigabit Firewall provides optimal value and defense against network security threats.

Reliable

Dual Gigabit Ethernet WAN ports support two broadband connections, in either a load-balancing or fail-over configuration. The load-balancing configuration enables maximum throughput by utilizing both WAN connections to distribute traffic across two broadband connections, possibly with different ISP providers. Alternatively, the second WAN port may be configured as a failover connection in case the primary connection fails, for another method of providing high reliability. The rugged metal unit houses advanced, high-quality electronics, and NETGEAR's tested and proven technology is backed by a lifetime warranty.

Easy to Use

Auto Detect connects to your ISP quickly; the user-friendly Web-based ProSafe Control Center configuration screen and install assistant reduce setup time. With SSL VPN tunnels, employees can quickly and securely access company data with just a Web browser without going into the office. The IPsec VPN wizard automates IPsec VPN configuration and secure remote makes it simple to connect to multiple sites. Support for DHCP (client and server) as well as PPPoE allows for easy, widespread deployment. This well-built firewall has an integrated 4-port 10/100/1000 Mbps switch and is compatible with Windows®, UNIX®, Macintosh®, and Linux® OS. It comes with an Ethernet cable, and Auto Uplink on the all ports eliminates the need for crossover cables.

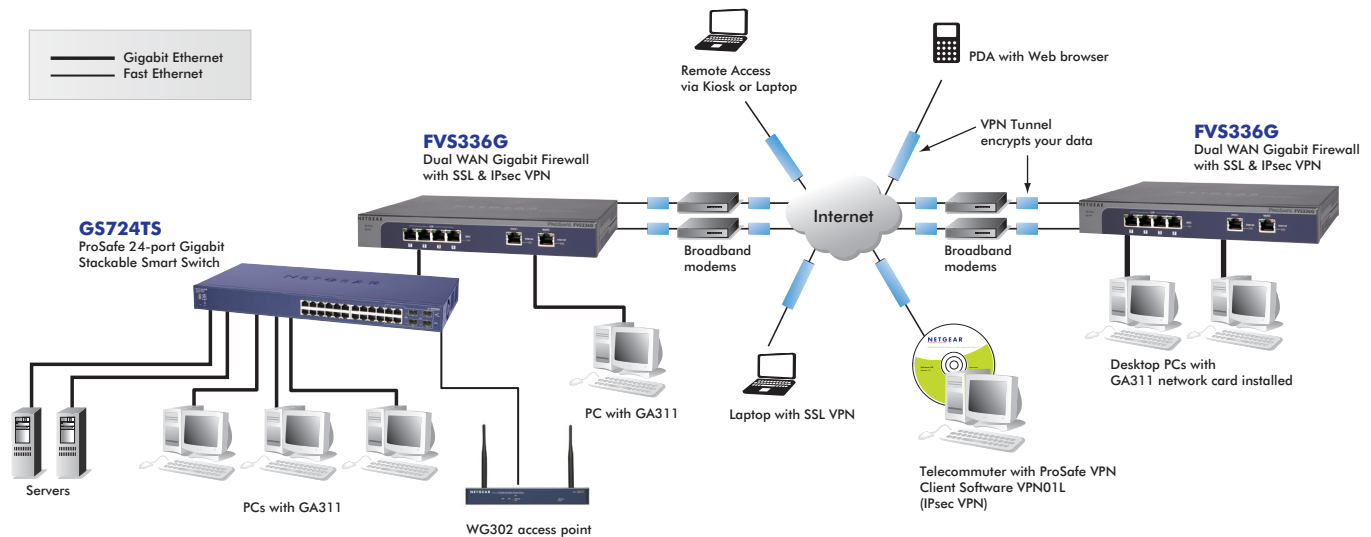
"The FVS336G provides a lot of value to small biz users looking for an easier way to provide secure connections to roving employees."

- SmallNetBuilder

"...a commercial quality unit that is loaded with the necessary features to bring security and remote connectivity to most any small business."

- GIGAWATT CHANNEL INSIDER





Technical Specifications

• Physical Interfaces

- LAN ports: Four (4) 10/100/1000 Mbps auto-sensing, Auto Uplink™ RJ-45 ports; one LAN port can be a dedicated hardware DMZ port
- WAN ports: Two (2) 10/100/1000 Mbps auto-sensing, Auto Uplink™ RJ-45 ports to connect to any broadband modem, such as DSL or cable
- Load balancing or fail-over modes

• SPI firewall

- Stateful packet inspection (SPI):
 - prevents denial-of-service (DoS) attacks
 - provides stealth mode
 - user support: Unrestricted
- Keyword filtering on:
 - address
 - service (ex. FTP, SMTP, HTTP, RPL, SNMP, DNS, ICMP, NNTP, POP3, SSH, etc.)
 - protocol
 - Web URL port/service blocking
 - file extension (ex. Java, URL, ActiveX)
- Port/service blocking

• IPsec VPN functionality

- Twenty-five (25) dedicated IPsec VPN tunnels
- Manual key and Internet Key Exchange Security Association (IKE SA) assignment
 - pre-shared key signature
 - RSA/DSA signature
- Key life and IKE lifetime time settings
- Perfect forward secrecy
- Diffie-Hellman groups 1 and 2
- Oakley support
- Operating modes
 - main
 - aggressive
- Fully qualified domain name (FQDN) support for dynamic IP address VPN connections

• IPsec support

- IPsec-based 56-bit (DES) 168-bit (3DES), or 256-bit (AES) encryption algorithm
- MD5 or SHA-1 hashing algorithm
- ESP support
- PKI features with X.509 v.3 certificate support
- remote access VPN (client-to-site), site-to-site VPN
- IPsec NAT traversal (VPN pass-through)

• SSL VPN Functionality

- Ten (10) dedicated SSL VPN tunnels
- SSL version support: SSLv3 and TLS 1.0
- SSL encryption support: DES, 3DES, ARC4, AES (ECB, CBC, XCBC, CNTR) 128/256 bit
- SSL message integrity: MD5, SHA-1, MAC-MDS/SHA-1, HMAC-MD5/SHA-1
- Certificate support:
 - RSA
 - Diffie-Hellman
 - Self

• Routing Modes of Operation

- Many-to-one Multi-network Address Translation (NAT)
- Classical routing
- Unrestricted users per port

• IP Address Assignment

- Static IP address assignment
- Internal DHCP server on LAN
- DHCP client on WAN
- PPPoE client support

Performance Features

• Throughput¹

- LAN-to-WAN: 60 Mbps total
- IPsec VPN (3DES): 16 Mbps
- SSL VPN: 10 Mbps

• Connections

- 10,000 concurrent sessions

Management Features

• Administration Interface

- SNMP (v2c) support
- Web graphic user interface
- Secure Sockets Layer (SSL) remote management
- User name and password protected
- Secure remote management support authenticated through IP address (or IP address range) and password
- Configuration changes/upgrades through Web GUI
- 2 factor authentication (WIKID)

• Logging

- SYSLOG
- Email alerts

• Functions

- VPN Wizard to simplify configuration of IPsec VPNs
- Auto Detect to automatically detect ISP address type (static, dynamic, PPPoE)
- Port range forwarding
- Port triggering
- Enable/disable WAN ping
- DNS proxy
- MAC address cloning/spoofing
- Network Time Protocol NTP support
- Diagnostic tools (ping, DNS lookup, trace route, other)
- Port/service
- Auto-Uplink on switch ports
- L3 Quality of Service (QoS) LAN-to-WAN and WAN-to-LAN (ToS)
- SIP ALG

• Protocol support

- Network: IP routing, TCP/IP, UDP, ICMP, PPPoE
- IP addressing: DHCP (client and server)
- Routing: RIP v1, RIPv2 (static routing, dynamic routing)
- VPN/security: IPsec (ESP), IKE, PKI, HTTPS

• User support

- LAN: Up to 253 users

• Maintenance

- Save/restore configuration, restore defaults, upgrades via Web browser, display statistics

• Hardware Specifications

- Processor Speed: 300 MHz
- Memory: 16 MB flash, 64 MB DRAM
- Power adapter: 12V DC, 1.2A -plug is localized to country of sale
- Dimensions: 25.4 x 17.8 x 3.96 cm (10 x 7 x 1.56 in)
- Weight: 1.7 kg (3.7 lb)

• Environmental Specifications

- Operating temperature: 0° to 40°C (32° to 104°F)
- Operating humidity: 90% maximum relative humidity, non-condensing

Warranty

- Firewall: NETGEAR Lifetime Warranty†
- Power supply: NETGEAR 3-year Warranty

System Requirements

- Cable, DSL or wireless broadband modem and
- Internet service
- Ethernet connectivity from broadband modem
- Network card for each connected PC
- Network software (e.g. Windows)
- Internet Explorer 5.0 or higher or Netscape Navigator 4.7 or higher

Package Contents

- ProSafe Dual WAN Gigabit Firewall (FVS336Gv2)
- Ethernet cable
- Installation guide
- Warranty/support information card
- Resource CD with single user ProSafe VPN Client Software license

NETGEAR Related Products

• Accessories

- VPN01L and VPN05L ProSafe VPN Client Software
- NMS100 ProSafe Network Management Software

• SSL Concentrators

- SSL312 ProSafe SSL VPN Concentrator 25

Ordering Information

- North America: FVS336G-200NAS
- Europe: FVS336G-200EUS
- Asia: FVS336G-200AUS

ProSupport Information

• OnCall 24x7, Category 1

- PMB0331-100 (US)
- PMB0331 (non-US)

• XPressHW, Category 1

- PRR0331

NETGEAR®

350 E. Plumeria Drive
San Jose, CA 95134-1911 USA
1-888-NETGEAR (638-4327)
E-mail: info@NETGEAR.com
www.NETGEAR.com

© 2010 NETGEAR, Inc. NETGEAR, the NETGEAR Logo, NETGEAR Digital Entertainer Logo, Connect with Innovation, FrontView, IntelliFi, PowerShift, ProSafe, ProSecure, RAIDar, RAIDiator, X-RAID, RangeMax, ReadyNAS and Smart Wizard are trademarks of NETGEAR, Inc. in the United States and/or other countries. Other brand names mentioned herein are for identification purposes only and may be trademarks of their respective holder(s). Information is subject to change without notice. All rights reserved.

*Basic technical support provided for 90 days from date of purchase.

†Lifetime warranty for product purchased after 05/01/2007.

‡Actual performance may vary depending on network traffic and environment.