

# APC Back-UPS® - “Tower” Style

Battery Backup with Surge Protection for  
Electronics and Computers

350VA - 500VA



BK500

- *Reliable*
- *Energy Efficient*
- *User Friendly*

The Back-UPS family offers guaranteed power protection for wireless networks, computers, gaming consoles and other electronics in your home or business. Models supply battery backup during outages and unsafe voltage fluctuations, as well as provide protection from damaging surges and spikes.

They're available in 'tower' or 'floor' styles ("tower" style shown in this brochure), and together with a variety of standard features, they are the perfect choice to protect your data and keep you connected.



BK350



BK500BLK

**TARGET**  
DISTRIBUTING

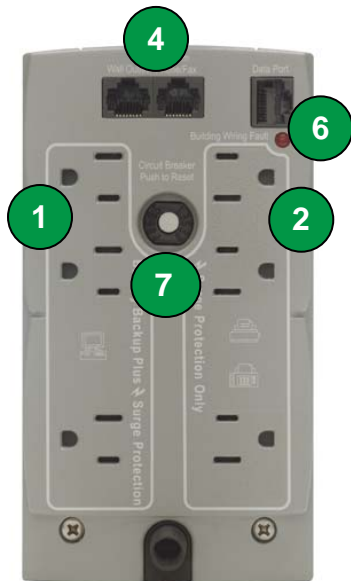
**800.873.5528**

**WWW.TARGETD.COM**

**APC**  
by Schneider Electric

# APC Back-UPS Features - “Tower” Style

Standard on all Back-UPS “Tower” models

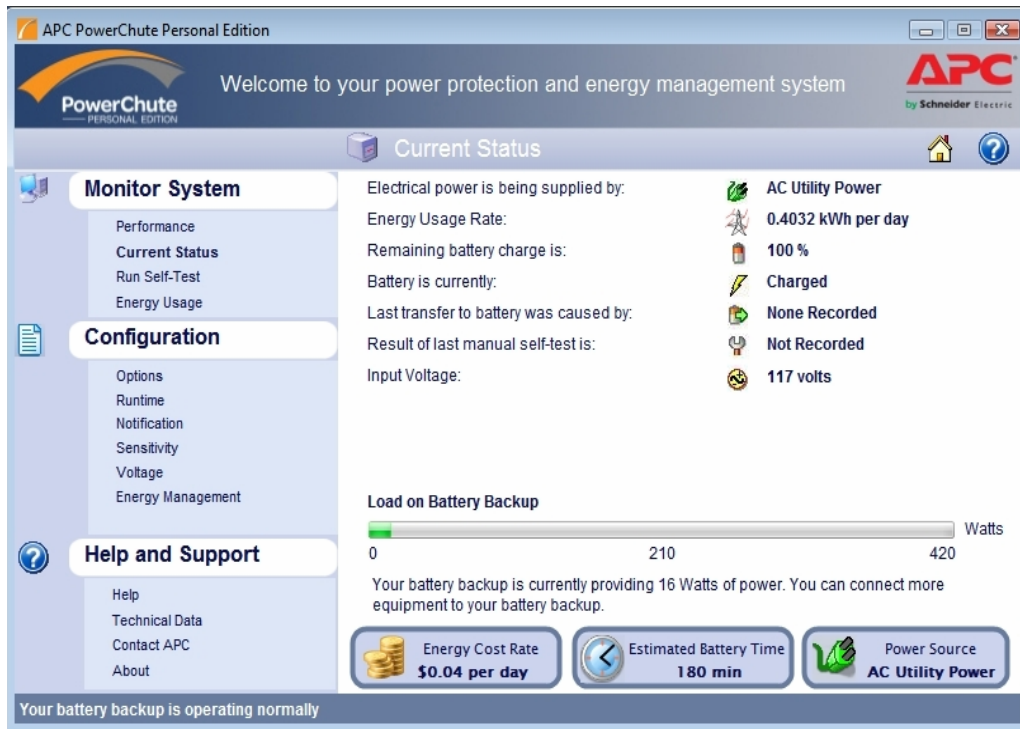


## Product Features:

- 1** 3 “**Battery Backup & Surge**” Outlets keep CPU, monitor and another critical device running when the power goes out or fluctuates outside safe levels.
- 2** 3 “**Surge Only**” Outlets protect printers, faxes or other equipment without reducing battery capacity.
- 3** **PowerChute Software** lets you use your computer to access additional power protection and management features:
  - Preserves your work, shuts down system during outages
  - Restarts your system, minimizing work disruptions
  - Enables customization of your Back-UPS settings
  - Monitors and displays power and battery status
- 4** **Data Line Surge Protection** guards against surges and spikes traveling over a telephone line.
- 5** **LED Status Indicators** provides visual status of unit and battery.
- 6** **Building Wiring Fault Indicator** lets you know if there are problems in your building's wiring.
- 7** **Push Button Circuit Breaker** enables quick recovery from overload.
- 8** **Automatic Diagnostic Testing** ensures your unit is ready when you need it.
- 9** **3 Yr Warranty**, \$100,000 Equipment Protection Policy, free technical phone and online support.

# APC PowerChute® Personal Edition

Easy-to-use auto-shutdown software with power and energy management features



- Easy to read view of current power conditions.
- Displays daily energy consumption and cost of powering your equipment.
- Saves money by allowing you to choose an energy management plan that fits your needs.
- Prevents data corruption by saving files and shutting down your system during extended power outages or low battery condition.
- Monitors system, and logs utility power problems and battery conditions
- Allows you to configure Back-UPS options like voltage transfer settings, silencing alarms during night hours, shutdown parameters, energy management features, etc.)
- Easy Installation takes the guesswork out of configuration for first-time users with a jargon-free help feature. (USB and serial interface).

## Back-UPS Specifications - "Tower" Style

Model No.	BK350	BK500	BK500BLK
Output			
Output Capacity	350 VA / 210 W	500 VA / 300 W	500 VA / 300 W
Output-on utility	120V, 50 or 60 Hz, +/- 3Hz (auto sensing)		
Output-on battery	115V +/-8%, 50 or 60 Hz +/-1 Hz (auto sensing)		
Output Connections	6 total NEMA 5-15R: 3 battery & surge 3 surge only		
Waveform Type	Stepped Approximation to Sine Wave		
Input			
Input Volt., Freq	120V, 50 or 60 Hz, +/- 3Hz		
Input Conn.	6 ft cord with right angle plug (NEMA 5-15P)		
Surge Protection			
AC Power	All outlets protected		
Data Line	Analog phone line, RJ-11 (Fax, modem, DSL)		
Physical			
Unit Dims HxWxD	6.5" x 3.6" x 11.2"	6.5" x 3.6" x 11.2"	6.5" x 3.6" x 11.2"
Unit Weight	12.5 lbs	13.8 lbs	13.8 lbs
Shipping Dims HxWxD	10.4" x 6.9" x 14.0"	10.4" x 6.9" x 14.0"	10.4" x 6.9" x 14.0"
Shipping Weight	14.0 lbs	15.3 lbs	15.3 lbs
Color	Beige		Black
UPC Code	731304016298	731304016304	731304021360
Battery			
Battery Type	Sealed, lead-acid, maintenance-free		
External Battery Compatibility	Not compatible		
Management			
Alarms	Visual (LED status indicators) and audible alarms		
Shutdown S/W	Compatible with PowerChute Personal Edition (via USB interface)		
Safety			
Certification/ Approvals	FCC Part 15 Class B, FCC Part 68, TUV	FCC Part 15 Class B, FCC Part 68, UL1778, Industry Canada	FCC Part 15 Class B, FCC Part 68, UL1778, Industry Canada

**APC by Schneider Electric**  
 132 Fairgrounds Rd  
 West Kingston, RI 02892  
[www.apc.com](http://www.apc.com)

**TARGET**  
 DISTRIBUTING  
**800.873.5528**  
[WWW.TARGETD.COM](http://WWW.TARGETD.COM)

**APC**  
 by Schneider Electric