

Smart-UPS 120V

Advanced line interactive power protection
for servers and network equipment



The world's most popular network and server UPS

The award-winning Smart-UPS™ from APC by Schneider Electric™ is the most popular UPS in the world for servers, storage, and networks. Trusted to protect critical data and equipment from power problems, the UPS supplies clean and reliable network-grade power. In addition to Legendary Reliability™ and manageability, Smart-UPS units have extremely high efficiency at low, medium, and high load levels, making them ideal for today's multicore or virtualized servers that have varying load consumption. Available in a variety of form factors (tower, rack-mount, rack/tower convertible), there is a model for every application and budget.

Intelligent and efficient network power protection from entry level to scaleable runtime. Ideal for servers, point-of-sale, routers, switches, hubs, and other network devices.

- Reliable
- Intelligent
- Efficient
- Manageable

APC™

by Schneider Electric

TARGET
DISTRIBUTING

800.873.5528 | WWW.TARGETD.COM | TGSALES@TARGETDIST.COM

Smart UPS Tower and Rack-mount 750-3000 VA

Application optimized standard models
ideal for servers, storage, point of sale,
and other network devices



[SMT750]



[SMT1500RM2U]



[SMT1500RM2U]



[SMT750]

Standard Features

High Efficiency Green Mode:
Optimum efficiency which saves utility and cooling costs

Emergency Power Off (EPO):
Provides for remote UPS shut-off in the event of a fire or other emergency (2200 VA and above).

Alphanumeric LCD Display:
Intuitive interface provides detailed and accurate information with ability to configure locally.

Network-grade power:
Conditioning extended range automatic voltage regulation (AVR), noise filtering, and surge protection

Communication ports serial:
USB, and SmartSlot™ for accessory cards

Advanced Battery Management:
Temperature-compensated charging extends life and advanced algorithms recommend replacement date.

Switched Outlet Group: Reboot hung devices, shed non-critical loads to conserve runtime, sequenced start-up/turn off

Battery Disconnect: Convenient way to disconnect battery for transport

Smart UPS Extended Run 750-3000 VA

Convertible extended run models ideal for critical servers and voice/data switches.



[SMT3000RM2U]



[SMX1500RM2UNC]



[SMX3000RMLV2U]

Additional Features

Slim 2U Rack/Tower Convertible Form

Display rotates easily for use in or out of a rack.

High Frequency Design

Reduces size of (or eliminates) bulky transformers making installation even easier.

Low Voltage Models

(2-3kVA)

Configurable output from 100-127 on low voltage models.

Models available with Pre-installed Network Cards

Models with “NC” suffix have pre-installed AP9631 network cards with temperature monitoring.

Smart external battery connector

Accepts external batteries and increases runtime automatically to increase availability.

Switched Outlet Groups

Reboot hung devices, shed noncritical loads to conserve runtime, sequenced start-up/turn off.

Emergency Power Off (EPO)

Provides for remote UPS shutoff in the event of a fire or other emergency.

Product Accessories

Management Cards

AP9630: UPS Network Management Card

AP9631: UPS Network Management Card with Environmental Monitoring

AP9620: Legacy Communications SmartSlot Card

AP9625: APC SmartUPS Two Post Rail Kit

Battery Packs

SMX48RMBP2U: APC Smart-UPS X-Series 48V

External Battery Pack Rack/Tower

SMX120RMBP2U: APC Smart-UPS X 120V External Battery Pack Rack/Tower

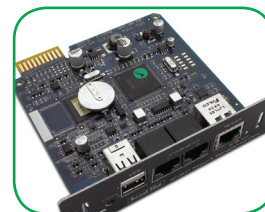
Service Bypass Panels

SBP1500RM: APC Service Bypass PDU, 120V 15AMP W/ (8) NEMA 5-15R

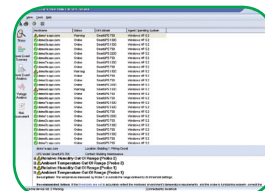
SBP3000RM: APC Service Bypass PDU, 120V 30AMP W/ (4) NEMA 5-20R and (1) L5-30R

SBP3000: APC Service Bypass Panel- 100-240V; 30A; BBM; Hard-wire Input/Output

SBP3000RMHW: APC Service Bypass Panel- 100-240V; 30A; BBM; Hard-wire Input/Output



AP9631



PowerChute™ Business Edition



SBP3000RM

Runtime Estimates for standard models

UPS VA	750	750 RM 2U	1000	1000 RM 2U	1500	1500 RM 2U	2200	2200 RM 2U	3000	3000 RM 2U
50W	1:43	2:04	3:03	3:26	5:01	5:21	8:51	5:19	8:51	5:47
100W	:50	1:00	1:40	2:02	2:52	3:05	5:36	3:06	5:36	3:22
200W	:22	:23	:45	1:00	1:24	1:31	3:05	1:38	3:05	1:46
300W	:12	:11	:25	:35	:51	:55	2:02	1:04	2:02	1:10
400W	:07	:07	:15	:23	:33	:37	1:28	:47	1:28	:52
500W	:05		:10	:15	:23	:26	1:06	:37	1:06	:40
600W			:07	:11	:17	:19	:52	:30	:52	:33
700W					:12	:14	:42	:25	:42	:27
800W					:10	:11	:34	:21	:34	:23
900W					:08	:09	:28	:18	:28	:20
1000W							:24	:16	:24	:17
1200W							:17	:12	:17	:13
1400W							:13	:10	:13	:11
1600W							:10	:08	:10	:09
Full Load	:05	:06	:06	:09	:07	:07	:07	:05	:06	:03

Extended-run models that accept external battery packs are also available. Go to www.apc.com for estimated runtimes.

Smart-UPS Display

Intuitive, easy to use LCD interface.



Standard Features

LCD Display Screen

Clear, consistent, and detailed information in your choice of basic or advanced menus.

Power Status:

- Operating mode and efficiency
- Load VA/Watts/Amps
- Input/Output Voltage and frequency
- Battery capacity and runtime
- Energy meter and more

Control:

- UPS and outlet group settings

Configuration:

- Language
- Power quality setting
- Sensitivity
- Voltage transfer points
- Alarm, delay, and threshold settings

Test and diagnostics:

- Initiate battery and runtime calibration tests

Logs:

- See explanation of last 10 transfers and faults

About:

- UPS and replacement battery part numbers
- Serial numbers
- Battery install and suggested replacement dates

Quick Status Indicators

Online, on battery, fault, and replace battery LEDs for quick status identification.

Escape

Exits to the previous menu or screen.

Return

Used to enter or confirm settings.

Navigation arrows

Allows quick adjustment of settings.

Standard Tower models

Product feature	SMT750	SMT1000	SMT1500	SMT2200	SMT3000
Output					
Power Capacity	500W/750 VA	700W/1000 VA	1080W/1500 VA	1980W/2200 VA	2700W/3000 VA
Nominal Output Voltage	120 V				
Output Frequency	57-63Hz				
WaveForm Type	Sine wave				
Output Connections	(6) NEMA 5-15R	(8) NEMA 5-15R		(8) NEMA 5-15R (2) NEMA 5-20R	
Input					
Nominal Input Voltage	120 V				
Input Voltage Range for main operations (Max adjustable range)	82-144 V (75-154V)				
Input Frequency	50/60 Hz +/-3 Hz (auto sensing)				
Input Connection NEMA L5-30P	NEMA 5-15P, 6ft cord			NEMA 5-20P	
Batteries and Runtime					
Battery Type	Maintenance-free sealed lead-acid battery with suspended electrolyte, leak proof				
Typical Backup Time at 1/2 Load (min)	15.9 min	20.6 min	23.9 min	24.1 min	13.6 min
Typical Backup Time at full Load (min)	4.6 min	6.1 min	6.7 min	6.7 min	5.5 min
Replacement Battery	RBC48	RBC6	RBC7	RBC55	
Communication and Management					
Interface Ports	Serial (RJ45), USB, and SmartSlot				
Control Panel and audible alarms	Alpha-numeric LCD display with LED status indicators; alarm on battery, distinctive low battery alarm and configurable delays				
Emergency Power off (EPO)	Optional			Yes	
Surge Protection and Filtering					
Surge Energy Rating	459J	480J			
Filtering meets	Full time multi-pole noise filtering: 0.3% IEEE® surge let-through, zero clamping response time, UL®1449				
Physical					
Maximum Height (in)	6.20 in	8.50 in	8.50 in	17 in	17 in
Maximum Width (in)	5.40 in	6.70 in	6.70 in	7.7 in	7.7 in
Maximum Depth (in)	14.10 in	17.3 in	17.3 in	21.5 in	21.5 in
Net Weight	29 lbs	42 lbs	53 lbs	112 lbs	116 lbs
Conformance					
Regulatory	UL 1778, FCC Part 15 Class A, CSA				
Warranty and Equipment Protection Policy	3 years electronics, 2 years battery, and \$150,000 lifetime EPP				

Standard Rack-mount models

Product feature	SMT750RM2U	SMT1000RM2U	SMT1500RM2U	SMT2200RM2U	SMT3000RM2U
Output					
Power Capacity	500W/750 VA	700W/1000 VA	1000W/1440 VA	1980W/2200 VA	2700W/3000 VA
Nominal Output Voltage	120 V				
Output Frequency	57-63 Hz				
Wave Form Type	Sine wave				
Output Connections	(6) NEMA 5-15R			(6) NEMA 5-15R (2) NEMA 5-20R	
Input					
Nominal Input Voltage	120 V				
Input Voltage Range for main operations (Max adjustable range)	82-144 V (75-154 V)				
Input Frequency	50/60 Hz +/-3 Hz (auto sensing)				
Input Connection	NEMA 5-15P, 8ft cord			NEMA 5-20P, 8ft cord	NEMA L5-30P, 8ft cord
Batteries and Runtime					
Battery Type	Maintenance-free sealed lead-acid battery with suspended electrolyte, leak proof				
Typical Backup Time at 1/2 Load (min)	16.0 min	31.3 min	25.8 min	10.1 min	11.7 min
Typical Backup Time at full Load (min)	5.5 min	8.7 min	7.2 min	5.2 min	3.4 min
Replacement Battery	APCRBC123	APCRBC132	APCRBC133	RBC43	
Communication and Management					
Interface Ports	Serial (RJ45), USB, and SmartSlot				
Control Panel and audible alarms	Alphanumeric LCD display with LED status indicators; alarm on battery, distinctive low battery alarm and configurable delays				
Emergency Power off (EPO)	Optional			Yes	
Surge Protection and Filtering					
Surge Energy Rating	459 J			480 J	
Filtering	Full time multipole noise filtering: 0.3% IEEE surge let-through, zero clamping response time, meets UL1449				
Physical					
Maximum Height (in)	3.50 in	3.50 in	3.50 in	3.50 in	3.50 in
Maximum Width (in)	17 in	17 in	17 in	19 in	19 in
Maximum Depth (in)	16 in	18 in	18 in	26 in	26 in
Net Weight	38 lbs	62 lbs	63 lbs	96 lbs	96 lbs
Conformance					
Regulatory	UL 1778, FCC Part 15 Class A, CSA				
Warranty and Equipment Protection Policy	3 years electronics, 2 years battery, and \$150,000 lifetime EPP				

Extended Run Rack/Tower Convertible models

Product feature	SMX750	SMX1000	SMX1500RM2U	SMX2000RMLV2U	SMX2200RMLV2U	SMX3000RMLV2U
Output						
Power Capacity	600W, 750 VA	800W, 1000 VA	1200W, 1500 VA	800W, 1920 VA	1980W, 2200 VA	2700W3000 VA
Nominal Output Voltage	120 V			100/110/120/127 V		
Output Frequency	57-63 Hz					
Wave Form Type	Sine wave					
Output Connections (NEMA)	(8) 5-15R (750 has 1 group, 1000 has 2, 1500 has 3)			(3) 5-15R (3) 5-20R (1) L5-20R	(3) 5-15R (3) 5-15R (2) 5-20R	(3) 5-15R (3) 5-20R (1) L5-30R
Input						
Nominal Input Voltage	120 V			100-127 V		
Input Voltage Range for main operations (Max adj. range)	82-143 V (75-153 V)			70-153 V		
Input Frequency	50/60 Hz +/-3 Hz (auto sensing)					
Input Connection	NEMA 5-15P 8 ft cord			NEMA 5-20P	NEMA L5-30P	
Batteries and Runtime						
Battery Type	Maintenance-free sealed lead-acid battery with suspended electrolyte, leak proof					
Typical Backup Time at 1/2 Load (min)	24 min	20 min	14 min	30 min	26 min	14 min
Typical Backup Time at full Load (min)	12 min	8 min	5 min	8 min	7 Min	5 min
Replacement Battery (UPS)	APCRBC116		APCRBC115	APCRBC117		
External Battery Pack	SMX48RMBP2U			SMX120RMBP2U		
Replacement Battery (XBP)	APCRBC115			APCRBC118		
Communication and Management						
Interface Ports	Serial (RJ45), USB, and SmartSlot					
Control Panel and Alarms	Alphanumeric LCD display with LED status indicators; alarm on battery, distinctive low battery alarm and configurable delays					
Emergency Power off (EPO)	Yes					
Surge Protection and Filtering						
Surge Energy Rating	540J					
Filtering	Full time multipole noise filtering: 0.3% IEEE surge let-through, zero clamping response time, meets UL1449					
Physical						
Maximum Height (in)	3.5 in (2U)					
Maximum Width (in)	17 in					
Maximum Depth	19 in			6 in		
Net Weight	49 lbs	50 lbs	55 lbs	85 lbs		
Conformance						
Regulatory	UL 1778, FCC Part 15 Class A, cUL					
Warranty and Equipment Protection Policy	3 years electronics, 2 years battery, and \$150,000 lifetime EPP					



800.873.5528 | WWW.TARGETD.COM | TGSales@targetdist.com