

APC Back-UPS® - “Floor” Style

Battery Backup with Surge Protection for
Electronics and Computers

350VA - 750VA

- *Reliable*
- *Energy Efficient*
- *User Friendly*

The Back-UPS family offers guaranteed power protection for wireless networks, computers, gaming consoles and other electronics in your home or business. Models supply battery backup during outages and unsafe voltage fluctuations, as well as provide protection from damaging surges and spikes.

They're available in 'tower' or 'floor' styles (“floor” style shown in this brochure), and together with a variety of standard features, they are the perfect choice to protect your data and keep you connected.



BE750G



BE350G



BE450G



BE550G



BE650G



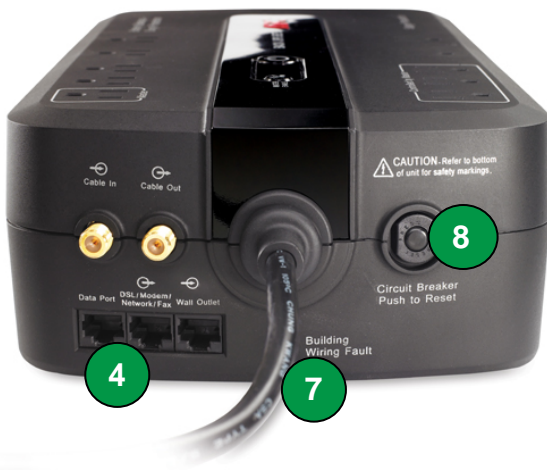
800.873.5528 | WWW.TARGETD.COM | TGSALES@TARGETDIST.COM



APC Back-UPS Features - “Floor” Style



Standard on all Back-UPS “Floor” models

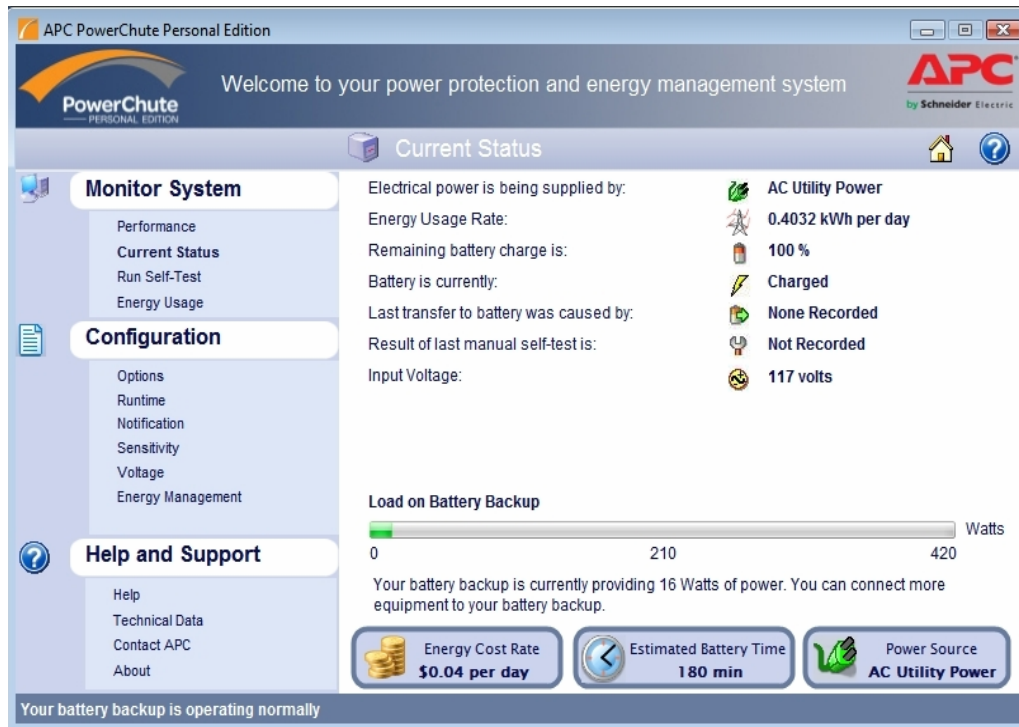


Product Features:

- 1 “Battery Backup & Surge” Outlets** keep CPU, monitor and another critical device running when the power goes out or fluctuates outside safe levels.
- 2 “Surge Only” Outlets** protect printers, faxes or other equipment without reducing battery capacity (including three power-saving “Controlled” outlets on the BE750G).
- 3 PowerChute Software** lets you use your computer to access additional power protection and management features:
 - Preserves your work, shuts down system during outages
 - Restarts your system, minimizing work disruptions
 - Enables customization of your Back-UPS settings
 - Monitors and displays power and battery status
- 4 Data Line Surge Protection** guards against surges and spikes traveling over data lines.
- 5 Combination Power Button/LED Indicator** provides visual and audible status of unit.
- 6 Ultra Efficient Electrical Design**, RoHS compliance and all recyclable packaging materials minimize environmental impact and maximize efficiency.
- 7 Building Wiring Fault Indicator** lets you know if there are problems in your building’s wiring.
- 8 Push Button Circuit Breaker** enables quick recovery from overload.
- 9 Automatic Diagnostic Testing** ensures your unit is ready when you need it.
- 10 3 Yr Warranty**, \$75,000 Equipment Protection Policy, free technical phone and online support.

APC PowerChute® Personal Edition

Easy-to-use auto-shutdown software with power and energy management features



- Easy to read view of current power conditions.
- Displays daily energy consumption and cost of powering your equipment.
- Saves money by allowing you to choose an energy management plan that fits your needs.
- Prevents data corruption by saving files and shutting down your system during extended power outages or low battery condition.
- Monitors system, and logs utility power problems and battery conditions
- Allows you to configure Back-UPS options like voltage transfer settings, silencing alarms during night hours, shutdown parameters, energy management features, etc.)
- Easy Installation takes the guesswork out of configuration for first-time users with a jargon-free help feature. (USB and serial interface).

Back-UPS Specifications - "Floor" Style

Model No.	BE350G	BE450G	BE550G	BE650G	BE750G
Output					
Output Capacity	350 VA / 210 W	450 VA / 257 W	550 VA / 330 W	650 VA / 390 W	750 VA / 450 W
Output-on utility	120V, 50 or 60 Hz, +/- 3Hz (auto sensing)				
Output-on battery	115V +/-8%, 50 or 60 Hz +/-1 Hz (auto sensing)				
Output Connections	6 total NEMA 5-15R: 3 battery & surge 3 surge only	8 total NEMA 5-15R outlets: 4 battery backup & surge 4 surge protection only			10 total NEMA 5-15R: 5 battery & surge 5 surge only (incl. 3 <i>Controlled</i> outlets)
Waveform Type	Stepped Approximation to Sine Wave				
Input					
Input Volt., Freq	120V, 50 or 60 Hz, +/- 3Hz				
Input Conn.	5 ft cord with right angle plug (NEMA 5-15P)			6 ft cord with right angle plug (NEMA 5-15P)	
Surge Protection					
AC Power	All outlets protected				
Data Line	Analog phone line, RJ-11 (Fax, modem, DSL)			Analog phone line, RJ-45 (Fax/Modem/DSL) Network line, RJ-45 (Ethernet 10/100 Base-T) Coax cable (Cable Modem/TV/DSS)	
Physical					
Unit Dims H x W x D	3.5" x 6.25" x 11.0"	3.5" x 12.0" x 7.0"	3.5" x 12.0" x 7.0"	3.54" x 12.6" x 6.97"	13.5" x 7.1" x 3.5"
Unit Weight	8.0 lbs	13.0 lbs	13.0 lbs	14.3 lbs	10.34 lbs
Shipping Dims H x W x D	5.0" x 7.75" x 14.25"	5.5" x 17.25"x 9.5"	5.5" x 17.25"x 9.5"	5.83" x 17.5"x 10.2"	17.8" x 10.2"x 5.94"
Shipping Weight	9.6 lbs	14.3 lbs	14.3 lbs	16.5 lbs	12.54 lbs
Color	Black				
UPC Code	731304258902	731304258926	731304258940	731304256526	731304256601
Battery					
Battery Type	Sealed, lead-acid, maintenance-free				
External Battery Compatibility	Not compatible				
Management					
Alarms	Visual (LED status indicators) and audible alarms				
Shutdown S/W	none	Compatible with PowerChute Personal Edition (via USB interface)			
Safety					
Certification/ Approvals	FCC Part 15 Class B, FCC Part 68, UL1778, NOM, TUV, UL 497A, UL 498	FCC Part 15 Class B, FCC Part 68, UL1778, NOM, TUV, UL 497A, UL 498	FCC Part 15 Class B, FCC Part 68, UL 1778, TUV	FCC Part 15 Class B, FCC Part 68, UL1778, TUV	FCC Part 15 Class B, FCC Part 68, UL1778, NOM, TUV, CSA C22.2 No.107.1,

APC by Schneider Electric
132 Fairgrounds Rd
West Kingston, RI 02892

www.apc.com



800.873.5528
WWW.TARGETD.COM

