



PM Power Products

Product Catalog

June 2018



For Sales Support Call 614.652.6509 or sales@pmpowerproducts.com



Staff-Alerter™ from PM Power Products provides users with a powerful, flexible, completely programmable Mass Alerting application to process action inputs and notify selected personnel during an emergency or time of crisis.

Staff-Alerter™ is a custom solution for command and communication during emergency events to notify key personnel anywhere on any device allowing them to take appropriate action. In addition, the system can command outputs to initiate additional actions or control other equipment as required.

Multiple events can be configured with activation through a phone system, contact switches, manually activated switches and with wireless panic buttons. Upon activation Staff-Alerter™ follows a predetermined program written for specific inputs.

The Staff-Alerter™ notifications can consist of a text message, an email, an automated voice call with text to speech, social media, application alert or a combination of any or all notifications. Additionally, any of the system outputs can be programmed to follow an input option or via a direct user input.

Staff-Alerter™ is equipped with built in battery backup and is designed to operate over your Wi-Fi network as its primary communication path. Cellular backup is available as an option to provide operation regardless of network or power availability.

Due to the unique capabilities of Staff-Alerter™, each installation will be custom tailored to ensure end user requirements are met. Staff-Alerter™ is a managed solution ensuring all customer changes are supported on a 24/7 basis. In addition, all critical operational functions, power state, on line status, Wi-Fi activity and signal levels, and command confirmations are supported and reported to you and monitored by our support center.

Staff-Alerter™ can work with any PBX system and can be fully integrated into the Ericsson-LG iPECS IP telephony product line.

Staff-Alerter™ can be combined with the PM Power Products Opti-Switch™, Vis-A-Ring™ and Tel-A-Control.

SA Alert provides a standalone device supporting up to 7 inputs providing both visual and audio alerting. SA Alert is perfect for hospitality solutions when persons are working alone in guest rooms or at the front desk at night. SA Alert can also be used for loud areas where PA and paging systems are difficult to hear, such as machine shops, school auditoriums used for band practice or gymnasiums. Coupled with the SA-PAD, which can provide up to 3 event messages, the SA Alert is a versatile solution for a wide variety of applications.

StaffAlerter

Designed to leverage communications and mass notification for security and normal notifications

- SMS text messaging
- Email
- Phone message
- Cell phone notification

Designed to support monitoring and control functions

- Fixed and mobile panic buttons
- Building-wide alerts via paging
- Access control
- Weather alerts
- Desktop, visual and audio alerts

Designed to work with premise and cloud based control using Wi-Fi and cellular access



EMG BB2U-24/20



Dual Battery Back-Up System for eMG80/800 and Vertical Summit Products

Designed for longer run time than a UPS system can provide The PM Power Products EMG-BBU2U-24/40 battery backup can supply up to 3 hours of operation after a power failure of the EMG80/800.

Designed to plug into the eMG80/800 or Summit KSU, the batteries are continuously charged by the eMG80/800 or Summit system. In the event of power loss, the batteries seamlessly supply power to run the failed system until power is restored.

The eMG800 can be mounted above or below the eMG BB2U-24/20 for ease of installation. Optionally, the EMG BB2U-24/20 can be used as a mounting shelf for the eMG80, saving the cost of a rack mount shelf. Supports the Vertical Summit products, too.

Protection is provided by a 10 amp in-line fuse the EMG BB2U-24/20 provides the longest run time in a cost effective compact package.

The EMG BB2U-24/20 is protected by a one-year warranty. The EMG BB2U-24/20 allows for easy battery changes in the future if needed. The system power cable routes out the back to the EMG system 24 VDC connector. The locking unit weight is 36 lbs., dimensions are 19" wide, 3.5" high and 13" deep. Includes (4) 10-32 and (4) 12-24 rack screws.



The design of the PM Power Products SDP-20S SIP Door Phone and the SVDP-30S SIP Video Door Phones are based on our experience and knowledge of IP phone development. The SDP-20S SIP Door Phone and the SVDP-30S SIP Video Door Phones use standard IP/RTP/RTSP protocol for voice transmission and enjoys the advantages of full SIP compatibility. The SDP-20S SIP Door Phone and the SVDP-30S SIP Video Door Phones have a variety of enterprise-level features and are compatible with the Ericsson-LG iPECS platforms eMG-80/800, UCP100/600/2400 and LIK-MFIM processors utilizing the 3rd Party SIP Extension license.

Standard SIP operation lends itself to use with most current IP PBX systems or in a standalone configurations using a SIP connection.

The SDP-20S SIP Door Phone and the SVDP-30S SIP Video Door Phones are designed for operation in indoor environments or protected areas. The robust mechanical construction offers protective coverage rating against dust and water (IP54). The SDP-20S SIP Door Phone and the SVDP-30S SIP Video Door Phones are an economical device with triple function (All in 1) Access control activated by call, passcode and/or RFID card or key FOB.

The PM Power Products SVDP-31S SIP Video Door Phone offers a next generation solution for entry control and video monitoring. The SVDP-31S combines IP technology with industry standards for access and physical security to deliver a system that improves communication for tenants, guests and visitors. The SVDP-31S flexibility, ease of use and simple installation makes it ideal for enhancing security in schools, offices and other public facilities.

The SVDP-31 SIP Video Door Phone is compatible with the iPECS UCS client video application.



SIP

The most popular and compatible standard protocol - SIP - enables delivery of worry free communication and connectivity.



Advanced Protection

Enclosure designed on International Protection (IP) markings to protect against intrusion – accidental or intentional - waterproofed to IP65 and anti-collision up to IK10.



HD Video

The 1280x720p (720p – progressive scan) camera produces vibrant high-quality HD video and captures motion effortlessly.



HD Voice

High definition voice using wideband G.722 coding produces clearer sound quality and extends the frequency range.



Noise Reduction

The embedded processing module reduces environmental noise and improves voice recognition up to 5 meters (approx. 16 feet).



Anti-tamper

Alarm sounds if/when cover is removed from the housing and reports the action to the control center.



Multi-function

The system is capable of performing multiple functions, i.e. video intercom and door phone and single device paging, and can be configurable with additional features.



Wide Range temperature adaptability

The system design adapts to operating under various environmental conditions and temperatures (supports temperatures ranging from -40 to +70 Celsius.)

SVP-X6 Enterprise IP Phone

A New Enterprise Color-LCD Phone with Intelligent DSS Key-mapping LCD Display

The new SVP-X6 IP Phone is a high-end enterprise desktop phone which comes with 2 intelligent DSS Key-mapping color LCDs to increase enterprise users' productivity.

Highlights

- ✓ 2 DSS Key-mapping LCD – 12 DSS keys corresponding to the LCD display to provide dynamic DSS/BLF functions, soft mapping up to five pages with a total of 60 DSS keys.
- ✓ Gigabit Ethernet – 10/100/1000Mbps Ethernet with POE enabled.
- ✓ Economic and Environmental Friendly design
- ✓ High-resolution TFT color display, delivering a rich visual experience.
- ✓ High Interoperability – Compatible with major platforms: Ericsson-LG iPECS, 3CX, Asterisk, Broadsoft, Elastix, Zycoo, etc.



Generic

- 6 SIP Lines
- HD Voice
- Support receiving Video call
- POE Enabled
- 3 LCDs (Main + DSS)
- Handset(HS) / Hands-free(HF) / Headphone(HP) mode
- Intelligent DSS Keys
- Optional External Power Supply
- Industrial Standard Certifications: CE/FCC

Call Features

- Call out / answer / reject
- Mute / Unmute (microphone)
- Call Hold / Resume
- Call Waiting
- Intercom
- Caller ID Display
- Speed Dial
- Anonymous Call (Hide Caller ID)
- Call Forwarding (Always/Busy/No Answer)
- Call Transfer (Attended/Unattended)
- Call Parking/Pick-up (depending on server)
- Redial
- Do-Not-Disturb (per line / per phone)
- Auto-Answering (per line)
- Voice Message (on server)
- Local 3-way Conference
- Hot Line
- Hot-Desking

Phone Features

- Phonebook (1000 entries)
- Remote Phonebook (XML/LDAP)
- Call log (1000 entries, in/out/missed)
- Black/White List Call Filtering
- Screensaver
- Voice Message Waiting Indication (VMWI)
- Programmable DSS/Soft keys
- Network Time Synchronization
- Support Bluetooth headset (Through USB Dongle BT20)
- Support Plantronics Wireless headset (Through Plantronics APD-80 EHS Cable)
- Support Recording (Through Flash Drive)
- Action URL / Active URI
- CSTA

Video

- Video codec: H.264
- Video call resolution: QCIF / CIF / VGA

Audio

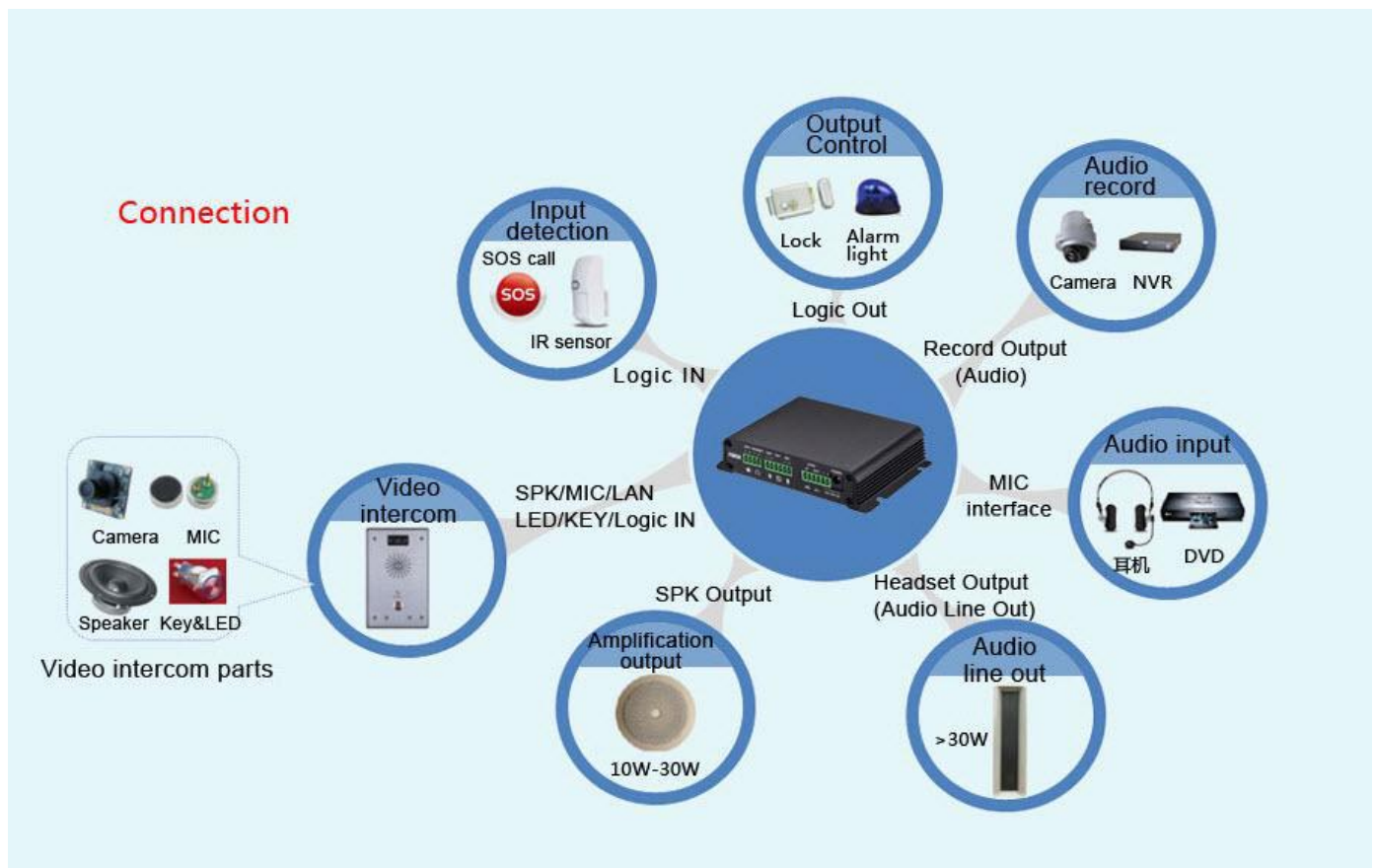
- HD Voice Microphone/Speaker (Handset/Hands-free, 0 ~ 7KHz Frequency Response)
- Wideband ADC/DAC 16KHz Sampling
- Narrowband CODEC: G.711a/u, G.723.1, G.726-32K, G.729AB, AMR, iLBC, Opus
- Wideband CODEC: G.722, AMR-WB, Opus(16KHz)
- Full-duplex Acoustic Echo Canceller (AEC) – Hands-free Mode, 96ms tail-length

PA2-AMP-S SIP VIDEO INTERCOM & PAGING GATEWAY

PA2-AMP-S is a SIP video intercom and paging device for industry applications. The media stream transmission utilizes standard IP/RTP/RTSP protocols. It is perfectly compatible with all the current SIP IPPBX /IMS platforms, such as Ericsson-LG iPECS, Asterisk, Broadsoft, 3CX, Elastix, etc. It has various functions and interfaces, such as Intercom, broadcast, video , security, and recording to adapt to different application environments.

Highlights

- ✓ Small form factor
- ✓ Emergency call button interface, active call
- ✓ Interact with IPC camera, you can make a video phone call
- ✓ NVR video recording, standard RJ45 interface
- ✓ Recording output, 3.5mm standard audio interface
- ✓ 10W-30W adaptive output power
- ✓ System online management and upgrade



REDUNDANT POWER SOLUTIONS

Add Redundant Power With Alarm Reporting to iPECS-LIK/UCP Systems

Reliability is a fundamental prerequisite for today's IP based telephony systems. Redundancy offers the peace of mind of knowing your system will continue to operate in the event of a component failure. The power supply is the heart of any system.



RPS-48V1.25

Your system depends on a reliable supply of power to operate, but most of today's systems offer only a single power supply. Adding a second supply is rarely an option or adds a large expense to the design. The RPS offers a breakthrough in highly reliable redundant system power.



RPS-48V1.25 Temp 1 Channel with Temperature Monitor

Should one of the RPS power supplies fail, an alarm interface directs the iPECS telephone system to alert staff of a power disruption. Using an audible alarm programmable by extension and an email alert, you will always be informed of the system readiness.

Often the system is located in the IT Room. To ensure proper operation of all data equipment, the proper environment is critical. Too much heat in a confined space can damage communications and data gear. Now you can monitor for the presence of excessive temperatures in that space by adding the Programmable Temperature Alert Module to the RPS system. Like a power supply failure, a power supply failure, a high or low temperature condition will signal an alarm through the iPECS phone system.

Ordering Information:

RPS-48V1.25 1 Channel

RPS-48V2.5 2 Channel

RPS-48V1.25 Temp 1 Channel with Temperature Monitor

1U-GWM-RPS-PKG 1 RPS-48V1.25 plus 3 1U-GWM Mounts



1U-GWM-RPS-PKG 1 RPS-48V1.25 plus 3 1U-GWM Mounts

RACK MOUNT PoE INJECTOR

POE-INJ-1000-16-1U

Gigabit 16 Port Rack mount POE Injector

- Power 16 Gigabit devices from one power supply 12V to 56V



PoE-INJ-1000-16-1U

*Requires external power supply or RPS

SW8-POE-PLUS AND SW8-G-POE-PLUS

- Accepts dual voltages - can operate 24V and 48V devices
- 18W per port with a 48V 120W supply (power supply additional)
- All 7 PoE ports can supply up to 1 Amp of power per port.
- Ideal For high current devices such as cameras with heater elements, Wi-Fi Access Points and large VoIP Phones.

- One PoE port can pass through up to 1.25 Amps of PoE power to a second switch using only a standard CAT5 cable and that switch's uplink port.
- Redundant power supply inputs allow for two supplies for increased capacity and/or redundant failover.
- 8 Port 10/100 PoE Switch with 7 PoE and 1 Uplink Port
- Optional 19" rack mount for single or dual installations (SW8-RM)

SM-8-RM Rack Mount Kit



For Sales Support Call 614.652.6509 or sales@pmpowerproducts.com

MOH-MP3 TUNER

The MOH-MP3 Digital Tuner will work with any PBX to provide FM radio, recorded content via USB or SD card memory and included custom programmed Message on Hold on the supplied SD card. The unit is offered in two configurations, MOH-MP3 Tuner is a 4 Function standalone Digital player unit with:

- Play Scan • Previous • Next • USB/FM/Auxiliary Modes • Fixed Antenna
- SD/MMC Card slot • Memory device with standard MOH loop included • USB port • Remote Control • 12V Power Adapter included • Cables



MOH-MP3 TUNER RM

Tuner Rack Mount provides a 1U rack mount faceplate for mounting the MOH-MP3 Tuner in a 19" Rack. The MOH-MP3 TUNER RACK MOUNT includes a long wire antenna to replace the fixed antenna as well as all the product and components included with the basic MOH-MP3 Tuner.

RING ALERT FXO/S

- FXO/FXS powered loud electronic ringer
- 2 distinct loudness levels • Built-in flashing lamp
- Ideal for use in extremely noisy areas and for the hearing impaired
- Small compact size easily mounts to wall



PoE-Wall-ES-G

PoE-WALL-ES-G Gigabit Injector for 802.3af 10/100/Gigabit PoE injector

Internal power supply
48 volts and 15 watts

Supports:

- IP telephones
- CCTV cameras
- Wi-Fi Access Points



VIS-A-RING OPTICAL RINGER

- Each unit includes 4 high intensity LEDs.
- Activate from any Telephone with Lamps. *
- Weatherproof ready for exterior mounting.
- Light colors: Red/Blue/Amber/Clear
- Operates on DC 12 VDC
- Power: 4W (1W/LED)
- Waterproof level: IP62
- Size: 5.5" L x 1.6" D x 1.2" W
- Power cable length: 24"
- 19 programmable lighting modes
- Supplied with PHONE and ALARM labels



* Requires optional Opt-a-Switch control module

OPT-A-SWITCH CONTROL MODULE



Provides Unique activation by any LED/Lamp illumination on host telephone. Place photo pick-up over any lamp to activate any device.

WI-FI RELAY

- WIFI enabled, remote control switch;
- Support AP/STA/AP+STA three network connections
- Support fast network configuration WPS
- Password authentication
- 1 relay output: normally open and normally closed ; 5 timer switch functions
- Control software supports five platforms: Windows, MAC, IOS, Android, Webpage.



- Dimensions: 3.35" L, 1.78 W, .91" H
- Operating Voltage: 5VDC, or 6-24VDC (dual input) •
- Power consumption: 2W typical 3W max
- Working Temp: -22 F to 185 F
- Max output 250VAC/10Amp
- Optional AC Relay 2x2 with remote monitoring and control of 2 AC outlets



AC RELAY 2X2

PAGING INTERFACE



TKTU9038213-PI Paging Interface

The IP-8004 page interface provides a cost effective solution for a paging interface for use in noisy or open areas. The IP-8004 PI allows remote paging over the WAN to an external amplifier or loud speaker.

Includes:

- IP terminal interface
- 3.5mm audio output
- 3.5mm 6' cable

IP-8004 LR PAGE

Provides both loud ringer and local paging anywhere on the WAN.

Includes:

- IP phone with integrated paging amplifier
- Includes Wall Speaker
- Power Supply

DIG LR PAGE

Provides both loud ringer and local paging anywhere on the WAN.

Includes:

- Digital Adapter with integrated paging amplifier
- Wall Speaker
- Power Supply

PoE TESTER

- Built-in 802.3af load
- DC voltages as low as 5V and currents below 10ma



WI-FI TEMP

- Monitor temp and humidity remotely via the included application running on PC, MAC, Android or iOS platform
- Temp range -40 – 80 degree C
- Humidity Range: 0-99.9% RH
- 6-24 VDC (Power supplied)
- Dimensions: 3.39" L, 3.39" W, 1.10" D



WIT-GDC CHARGER

Charger for WIT and GDC handsets.

- Holds 1 WIT or GDC battery
- Backup battery for longer talk time



Tel-A-Control

Remote Control Board
Single FXO or FXS Phone interface
2 independent relays with

- Timed Closure
- 4 modes per relay
- Password protection
- 12V DC PS included



Quikcable R2

Installation Cable Rev 2

- 5' with 25 pair male connector
- 3 RJ45S and 8 RJ11 ends
- Terminates eMG80 and Summit digital boards



PoE AND POWER ADAPTERS



TP-POE-48-WP



TKSN9102211-T



PSM50A 12V



PS-48V 1.25A



PS-48V 2.5A

POE-INJ-G-15W

- 48 volts DC power supply included
- 15 Watts max power load
- + 48 volts on pins 4 and 5 return voltage on pins 7 and 8
- Gigabit data rates supported



10/100, POE-INJ-S

- 10/100 Shielded Passive PoE Injector, 3A
- Injects DC power on RJ45 socket pins 4,5 (+) and 7,8 (-). Shielded.
- Black. 24" DC Cable (5.5/2.1mm), 3A.150W



GIGABIT, POE-INJ-1000-S

- Gigabit PoE Injector with LED power indicator





MULTI-PURPOSE SOLID STATE SOUND ACTIVATED RECORDER

VOX Streamer is the leading professional sound activated recorder with advanced trigger and filter settings for high quality audio recordings. Now with AGC (Automatic Gain Control) and a built in SPL (sound pressure level) meter to document noise levels over time! With multi-channel recording support, VOX Streamer supports up to 16 recording streams on one system.

- Robust and stable sound recording engine
- Flexible recording system
- Unique noise suppression system
- MP3 and WAV format
- Exclusive Dual recording formats
- Automatic gain control (AGC)
- Sound pressure level meter/logger
- Pre-recording digital filters
- Instant timer recording



VOX-USB PHONE

- USB CO Line Interface Module
- Allows recording of FXO/FXS lines

USB-TELCO-1-REC

- A stand alone single line recorder with supplied recording software.

PC-TELCO-1

- Telephone To Computer MP3 Call Recorder Adapter • Works with recording devices such as recording pen, MP3, MP4 mobile with record functions
- With the recorder software (included), all calls are saved as MP3 or wav format



MINI-UPS



5V 2A Mini-UPS-1512

Available in 18 inch and 24 inch Depth - Ships Fully Assembled

Common Features:

- 5 year warranty
- 19 inch standard rack mount
- 13 inch maximum rail depth
- 120 pound rating
- Two fan mount locations on top, 4"x4"
- Optional Dual Fan Unit
- 1.2mm cold rolled steel
- Front locking glass door opens to 245 degrees
- Keys and locks for front door and side panels

Compliance:

- ANSI/EIA RS-310
- IEC297
- DIN4149 PART7
- ETSI standard



6U/6UD Wall Mount Cabinets

WME6U 18 Inches Deep
WME6UD 24 Inches Deep



9U/9UD Wall Mount Cabinets

WME9U 18 Inches Deep
WME9UD 24 Inches Deep



12U/12UD Wall Mount Cabinets

WME12U 18 Inches Deep
WME12UD 24 Inches Deep



15U/15UD Wall Mount Cabinets

WME15U 18 Inches Deep
WME15UD 24 Inches Deep



WME-CASTERS

Set of 4 casters for cabinet



FME-DRAWER

Locking Sliding Keyboard
Drawer for 4-Post Cabinet



27U and 42U Cabinets

FME-E3-27U/600mm
FME-E3-27U/900mm (Deep)

FME-G3-42U/600mm
FME-G3-42U/900mm (Deep)



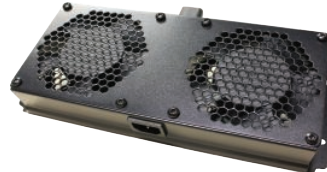
FME-42-OPEN-RACK

42U 2-POST Open Rack



WME-FAN

Dual Fan Kit for
27U/42U Cabinets



FME-FANS

Dual 4" Fan Assembly
120VAC

WME-SHELF 10

10" 2U Vented Shelf

WME-SHELF 12

12" 2U Vented Shelf



1U-RACK FAN-TEMP

4 Unit Fan Assembly with
temp display and alert
110VAC

1U-RACK FAN

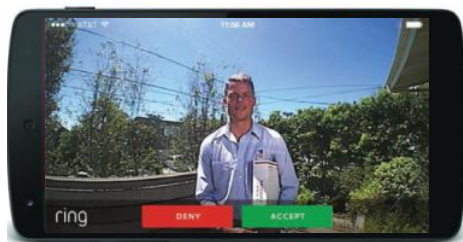
Same as above without temp display and alert





CONVENIENCE

Your business can allow for more flexible delivery schedules. Always know when deliveries are arriving at your lobby, warehouse or will call.



SECURITY

Ring provides a new level of security by notifying you when someone is on your property and letting you see and speak with anyone at your front door, will call or other access points.



MONITORING

No need to wonder if something is going on outside your business. See for yourself via built-in motion sensors, detect any activity on your property and trigger instant mobile alerts.

Features:

- Wi-Fi PCB that operates on a low voltage supply
- Motion sensors detect movement and trigger mobile alerts
- 1080P HD cameras
- Speakers and microphones with active noise cancellation
- Infrared LEDs provide clear visuals at any time of day
- Compatible with iPhone, iPad, Android devices, Mac and Win10 PC
- Sync an unlimited number of devices
- Optional Cloud Recording allows for footage to be accessed through smartphone, tablet or computer
- 4 interchangeable faceplates included with Pro Camera (Nickel, White, Black, and Bronze)
- 1 year limited hardware warranty



Ring Pro



Remote Access



Stick-Up CAM



Solar Panel



Chime

For Sales Support Call 614.652.6509 or sales@pmpowerproducts.com

E-107 8-Channel PDU with On/Off Power Control



The E-107 PDU 8-Channel On/Off Power control is a reliable rack mounted power center. The E-107 has 8 light switches that control 8 individual sockets on the rear of the unit. The E-107 can handle a maximum of 15 Amps per system with a maximum of 10 Amps per input. A 15 Amp breaker protects the unit from any potential damage caused through power surges or grounding problems.

Features:

- On/Off Power Control Center
- 8 On/Off toggle switches
- Dimensions: 2 inch X 6 inch X 21 inch
- Power draw: 15 Amps total; maximum 10 Amps per input
- 1 year limited warranty

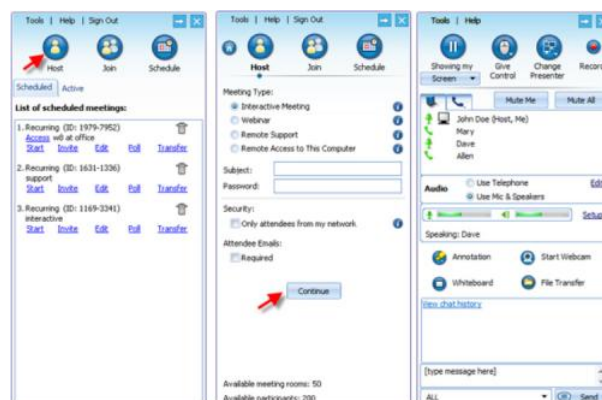


RHUB 6-in-1 Web Conferencing Servers

The RHUB server provides flexibility and value by embedding 6 outstanding real time collaborations and applications in 1 server.



1. **Web conferencing** – give sales presentations and product demos, and collaborate interactively
2. **Remote Support** – support PC and Mac users remotely
3. **Audio Conferencing** – VoIP based audio conferencing & free landline audio conferencing services
4. **Video Conferencing** – multi-point webcam based video conferencing
5. **Remote Access** – access your office or home PCs from anywhere anytime
6. **Webinar** – provide online seminars without download of any kind for view-only attendees



Main Entry Panel

Select a Meeting Type

Meeting Control Panel

PM Power Products HS-LOUD SPKR



The HS-LOUD SPKR from PM Power Products provides a low-cost solution for interfacing telephones to create a loud ringer, and/or amplified signal over the supplied wall speaker.

The HS-LOUD SPKR can also be used as a pre-amp for connection to any paging system.

Specifications

- Loud ringer and amplified speaker
- Plugs into the headset jack port
- RJ9 connector
- Works with any phone that supports ring over the headset jack
- Digital, IP, SIP phone support
- Adjustable high gain amplifier
- Includes 12V power supply and wall speaker with 12 foot RCA cable
- Can be used as a pre-amp for paging systems using a dedicated basic SIP, digital or Ericsson-LG iPECS series IP phones

Operation

- Ensure the phone is set to headset ring
- Speaker volume adjustment is via the Adjustable Gain Potentiometer

Included

- HS-LOUD SPKR
- Wall Mount Speaker
- 12V power supply
- Telephone RJ9 Line cord
- 12 foot RCA cable

PM Power Products ATA SIP Gateways



Features

- Linux OS
- Supports SIP 2.0 (RFC3261) and correlative RFCs
- SIP supports 2 SIP servers, and Group servers
- Supports SIP UDP/TCP
- SIP support SIP domain, SIP authentication (none, basic, MD5), DNS name of server, Peer to Peer/ IP Call
- system led to indicate power/phone/register status
- Supports T.38 FAX
- Supports BY-PASS FAX
- FXS Port (1 Port for FX100S) and (2 Port for FX200S)
- Codec: G.711A/u, G.729AB, G.726-32
- Voice Activity Detection (VAD)
- Comfort Noise Generation (CNG)
- Background noise suppression
- Adaptive jitter buffers
- Packet loss concealment
- Different country tones
- SIP support SIP domain, SIP authentication (none, basic, MD5), DNS name of server, Peer to Peer/ IP call
- DTMF: Support SIP info, DTMF Relay, RFC2833
- IP application: support Call forward/transfer/holding/waiting
- Call control features: Flexible dial map, Hotline, Empty calling reject, Black list for reject authenticated call, limit call, No disturb, Caller ID.
- Support three way conference call

Network Features

- WAN / LAN: 10/100M Ethernet ports,
- Bridge mode and route
- PPPoE for xDSL
- VLAN (802.1Q/P)
- NAT (NAPT)
- NAT transverse :Support STUN client
- DHCP client on WAN/ DHCP server on LAN
- Main DNS and secondary DNS server
- DNS Relay
- NTP Client
- Firewall
- Web management access restricted
- VPN (L2TP/PTP)
- ping, tracer, telnet

Maintenance and Management

- WEB management
- Management with different account right
- Recover firmware and factory reset through Uboot
- Upgrade firmware via HTTP, HTTPS, FTP, TFTP
- DHCP option66 and custom option for auto provisioning
- Auto Provisioning to upgrade configuration file
- Syslog

Specification

Item		FX100S / FX200S
Power Adapter		Input:100-240V
		Output:12V/0.5A
FXS Port		FX100 1 FXS Port FX200 2 FXS Ports
Port	WAN	10/100M Base-T RJ-45 for WAN
	LAN	10/100M Base-T RJ-45 for PC
Power Consumption		IDLE: 2.5W Active: 2.8W
Operation Temperature		0-40°C
Relative Humidity		10-65%
Flash		16Mbits
SDRAM		64Mbits