



# Network Security Appliance Series

## Next-Generation Firewall

Organizations of all sizes depend on their networks to access internal and external mission-critical applications. As advances in networking continue to provide tremendous benefits, organizations are increasingly challenged by sophisticated and financially-motivated attacks designed to disrupt communication, degrade performance and compromise data. Malicious attacks penetrate outdated stateful packet inspection firewalls with advanced application layer exploits. Point products add layers of security, but are costly, difficult to manage, limited in controlling network misuse and ineffective against the latest multipronged attacks.

By utilizing a unique multi-core design and patented Reassembly-Free Deep Packet Inspection® (RFDPI) technology\*, the Dell SonicWALL® Network Security Appliance (NSA) Series of Next-Generation Firewalls offers complete protection without compromising

network performance. The low latency NSA Series overcomes the limitations of existing security solutions by scanning the entirety of each packet for current internal and external threats in real-time. The NSA Series offers intrusion prevention, malware protection, and application intelligence, control and visualization, while delivering breakthrough performance. With advanced routing, stateful high-availability and high-speed IPSec and SSL VPN technology, the NSA Series adds security, reliability, functionality and productivity to branch offices, central sites and distributed mid-enterprise networks, while minimizing cost and complexity.

Comprised of the Dell SonicWALL NSA 220, NSA 220 Wireless-N, NSA 250M, NSA 250M Wireless-N, NSA 2400, NSA 3500 and NSA 4500, the NSA Series offers a scalable range of solutions designed to meet the network security needs of any organization.



- Next-Generation Firewall
- Scalable multi-core hardware and Reassembly-Free Deep Packet Inspection
- Application intelligence, control and visualization
- Stateful high availability and load balancing
- High performance and lowered TCO
- Network productivity
- Advanced routing services and networking
- Standards-based Voice over IP (VoIP)
- Dell Sonicwall Clean Wireless
- Onboard Quality of Service (QoS)
- Integrated modules support

## Features and benefits

**Next-Generation Firewall** features integrate intrusion prevention, gateway anti-virus, anti-spyware and URL filtering with application intelligence and control, and SSL decryption to block threats from entering the network and provide granular application control without compromising performance.

### **Scalable multi-core hardware and Reassembly-Free Deep Packet**

**Inspection** scans and eliminates threats of unlimited file sizes, with near-zero latency across thousands of connections at wire speed.

**Application intelligence, control and visualization** provides granular control and real-time visualization of applications to guarantee bandwidth prioritization and ensure maximum network security and productivity.

**Stateful high availability and load balancing** features maximize total network bandwidth and maintain seamless network uptime, delivering uninterrupted access to mission-critical resources, and ensuring that VPN tunnels and other network traffic will not be interrupted in the event of a failover.

**High performance and lowered TCO** are achieved by using the processing power of multiple cores in unison to dramatically increase throughput and provide simultaneous inspection capabilities, while lowering power consumption.

**Network productivity** increases because IT can identify and throttle or block unauthorized, unproductive and non-work related applications and web sites, such as Facebook® or YouTube®, and can optimize WAN traffic when integrated with Dell SonicWALL WAN Acceleration Appliance (WXA) solutions.

**Advanced routing services and networking** features incorporate 802.1q VLANs, multi-WAN failover, zone and object-based management, load balancing, advanced NAT modes, and more, providing granular configuration flexibility and comprehensive protection at the administrator's discretion.

**Standards-based Voice over IP (VoIP)** capabilities provide the highest levels of security for every element of the VoIP infrastructure, from communications equipment to VoIP-ready devices such as SIP Proxies, H.323 Gatekeepers and Call Servers.

### **Dell SonicWALL Clean Wireless**

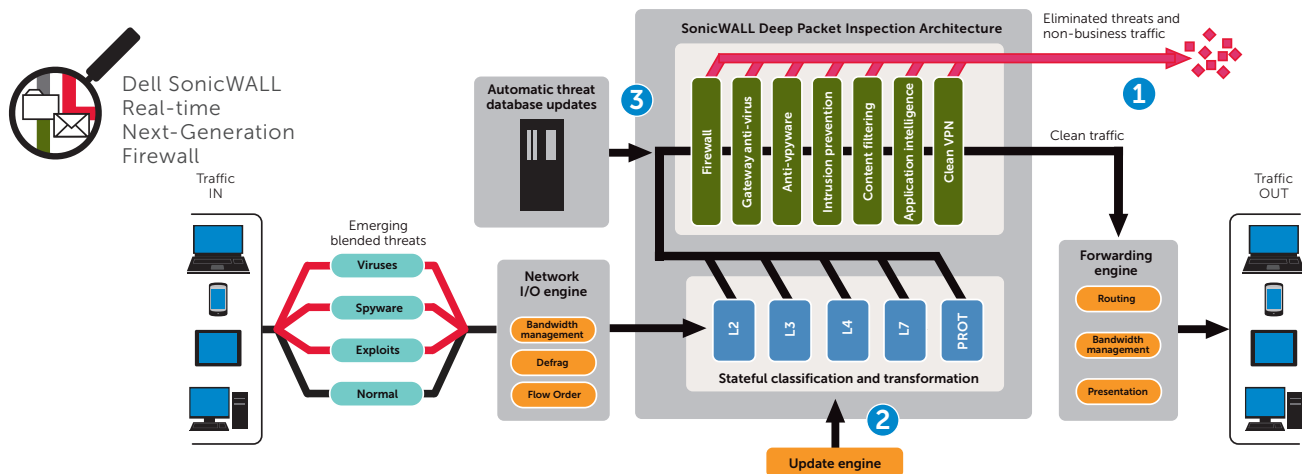
optionally integrated into dual-band wireless models or via Dell SonicWALL SonicPoint wireless access points provides powerful and secure 802.11a/b/g/n 3x3 MIMO wireless, and enables scanning for rogue wireless access points in compliance with PCI DSS.

### **Onboard Quality of Service (QoS)**

features use industry standard 802.1p and Differentiated Services Code Points (DSCP) Class of Service (CoS) designators to provide powerful and flexible bandwidth management that is vital for VoIP, multimedia content and business-critical applications.

**Integrated modules support** on NSA 250M and NSA 250M Wireless-N appliances reduce acquisition and maintenance costs through equipment consolidation, and add deployment flexibility.

## Dynamic security architecture and management



### Best-in-class threat protection

**1** Dell SonicWALL deep packet inspection protects against network risks such as viruses, worms, Trojans, spyware, phishing attacks, emerging threats and Internet misuse. Application intelligence and control adds highly controls to prevent data leakage and manage bandwidth at the application level.

**2** The Dell SonicWALL Reassembly-Free Deep Packet Inspection (RFDPI) technology utilizes Dell SonicWALL's multi-core architecture to scan packets in real-time without stalling traffic in memory.

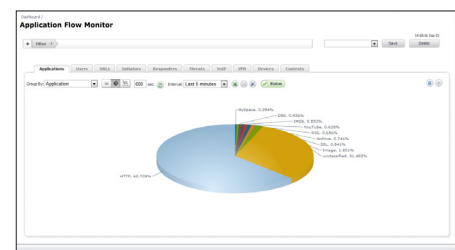
This functionality allows threats to be identified and eliminated over unlimited file sizes and unrestricted concurrent connections, without interruption.

**3** The Dell SonicWALL NSA Series provides dynamic network protection through continuous, automated security updates, protecting against emerging and evolving threats, without requiring any administrator intervention.

### Application intelligence and control

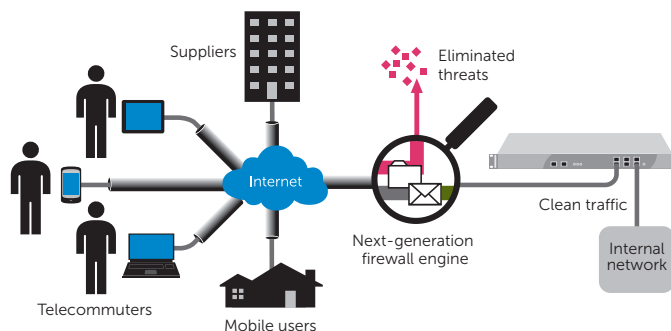
Dell SonicWALL Application Intelligence and Control provides granular control and real-time visualization of applications to guarantee bandwidth prioritization and ensure maximum network security and productivity. An integrated feature of Dell SonicWALL Next-Generation Firewalls, it uses Dell SonicWALL RFDPI technology to identify

and control applications in use with easy-to-use pre-defined application categories (such as social media or gaming)—regardless of port or protocol. Dell SonicWALL Application Traffic Analytics provides real-time and indepth historical analysis of data transmitted through the firewall including application activities by user.



### Dell SonicWALL Clean VPN

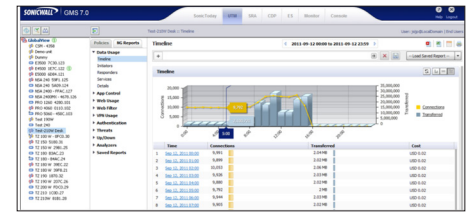
Dell SonicWALL Clean VPN™ secures the integrity of VPN access for remote devices including those running iOS or Android by establishing trust for remote users and these endpoint devices and applying anti-malware security services, intrusion prevention and application intelligence and control to eliminate the transport of malicious threats



## Centralized policy management

The Network Security Appliance Series can be managed using the SonicWALL Global Management System, which provides flexible, powerful and intuitive

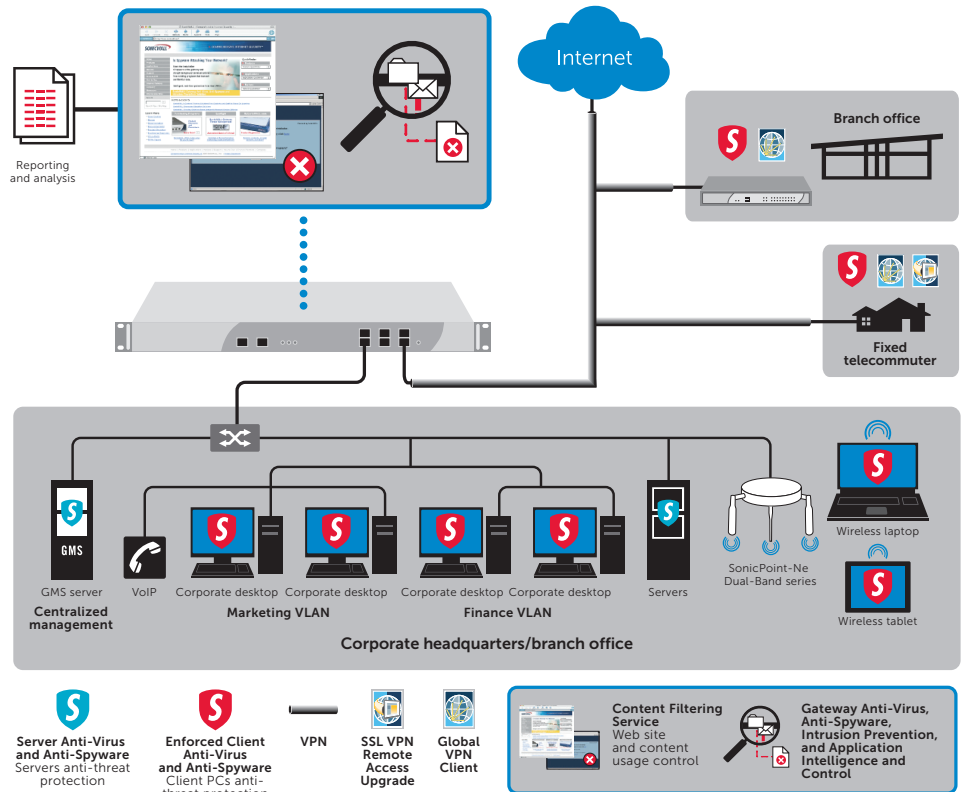
tools to manage configurations, view real-time monitoring metrics and integrate policy and compliance reporting and application traffic analytics, all from a central location.



## Flexible, customizable deployment options – NSA Series at-a-glance

Every SonicWALL Network Security Appliance solution delivers Next-Generation Firewall protection, utilizing a breakthrough multi-core hardware design and Reassembly-Free Deep Packet Inspection for internal and external network protection without compromising network performance. Each NSA Series product combines high-speed intrusion prevention, file and content inspection, and powerful application intelligence and control with an extensive array of advanced networking and flexible configuration features. The NSA Series offers an accessible, affordable platform that is easy to deploy and manage in a wide variety of corporate, branch office and distributed network environments.

- The SonicWALL NSA 4500 is ideal for large distributed and corporate central-site environments requiring high throughput capacity and performance
- The SonicWALL NSA 3500 is ideal for distributed, branch office and corporate environments needing significant throughput capacity and performance



- The SonicWALL NSA 2400 is ideal for branch office and small- to medium-sized corporate environments concerned about throughput capacity and performance

- The SonicWALL NSA 220, NSA 220 Wireless-N, NSA 250M and NSA 250M Wireless-N are ideal for branch office sites in distributed enterprise, small- to medium-sized businesses and retail environments

## Security services and upgrades



### **Gateway Anti-Virus, Anti-Spyware, Intrusion Prevention and Application Intelligence and Control Service**

delivers intelligent, real-time network security protection against sophisticated application layer and content-based attacks including viruses, spyware, worms, Trojans and software vulnerabilities such as buffer overflows. Application intelligence and control delivers a suite of configurable tools designed to prevent data leakage while providing granular application-level controls along with tools enabling visualization of network traffic.



### **Enforced Client Anti-Virus and Anti-Spyware**

working in conjunction with Dell SonicWALL firewalls, with a choice of McAfee® or Kaspersky® technology, guarantees that all endpoints have the latest versions of anti-virus and anti-spyware software installed and active.



### **Content Filtering Service**

enforces protection and productivity policies by employing an innovative rating architecture, utilizing a dynamic database to block up to 56 categories of objectionable web content.



### **Analyzer**

is a flexible, easy to use web-based application traffic analytics and reporting tool that provides powerful real-time and historical insight into the health, performance and security of the network.



**Virtual Assist** is a remote support tool that enables a technician to assume control of a PC or laptop for the purpose of providing remote technical assistance. With permission, the technician can gain instant access to a computer using a web browser, making it easy to diagnose and fix a problem remotely without the need for a pre-installed “fat” client.



### **Dynamic Support Services**

are available 8x5 or 24x7 depending on customer needs. Features include world-class technical support, crucial firmware updates and upgrades, access to extensive electronic tools and timely hardware replacement to help organizations get the greatest return on their Dell SonicWALL investment.



### **Global VPN Client**

**Upgrades** utilize a software client that is installed on Windows-based computers and increase workforce

productivity by providing secure access to email, files, intranets, and applications for remote users.



### **SSL VPN Remote Access**

**Upgrades** provide clientless remote network level access for PC, Mac and Linux-based systems. With

integrated SSL VPN technology, Dell SonicWALL firewall appliances enable seamless and secure remote access to email, files, intranets, and applications from a variety of client platforms via NetExtender, a lightweight client that is pushed onto the user's machine.



### **Dell SonicWALL® Mobile**

**Connect™**, a single unified client app for Apple® iOS and Google® Android™, provides smartphone and tablet users superior network-level access to corporate and academic resources over encrypted SSL VPN connections.



### **Comprehensive Anti-Spam Service (CASS)**

offers small- to medium-sized businesses comprehensive protection from spam and viruses, with instant deployment over existing Dell SonicWALL firewalls. CASS speeds deployment, eases administration and reduces overhead by consolidating solutions, providing one-click anti-spam services, with advanced configuration in just ten minutes.

**Deep Packet Inspection for of SSL-Encrypted Traffic (DPI-SSL)** transparently decrypts and scans both inbound and outbound HTTPS traffic for threats using Dell SonicWALL RFDPI. The traffic is then re-encrypted and sent to its original destination if no threats or vulnerabilities are discovered.

# Specifications

Firewall	NSA 220/W	NSA 250M/W	NSA 2400	NSA 3500	NSA 4500
SonicOS version	SonicOS 5.8.1.1		SonicOS enhanced 5.6 (or higher)		
Stateful throughput <sup>1</sup>	600 Mbps	750 Mbps	775 Mbps	1.5 Gbps	2.75 Gbps
GAV performance <sup>2</sup>	115 Mbps	140 Mbps	160 Mbps	350 Mbps	690 Mbps
IPS performance <sup>2</sup>	195 Mbps	250 Mbps	275 Mbps	750 Mbps	1.4 Gbps
Full DPI performance <sup>2</sup>	110 Mbps	130 Mbps	150 Mbps	240 Mbps	600 Mbps
IMIX performance <sup>2</sup>	180 Mbps	210 Mbps	235 Mbps	580 Mbps	700 Mbps
Maximum connections <sup>1</sup>	85,000	110,000	225,000	325,000	500,000
Maximum DPI connections	32,000	64,000	125,000	175,000	250,000
New connections/sec	2,200	3,000	4,000	7,000	10,000
Nodes supported	Unrestricted				
Denial of Service attack prevention	22 classes of DoS, DDoS and scanning attacks				
SonicPoints supported (maximum)	16	24	32	48	64
VPN					
3DES/AES throughput <sup>3</sup>	150 Mbps	200 Mbps	300 Mbps	625 Mbps	1.0 Gbps
Site-to-site VPN tunnels	25	50	75	800	1,500
Bundled Global VPN Client licenses (maximum)	2 (25)	2 (25)	10 (250)	50 (1,000)	500 (3,000)
Bundled SSL VPN licenses (maximum)	2 (15)	2 (15)	2 (25)	2 (30)	2 (30)
Secure Virtual Assist bundled (maximum)	1 30-day trial (5)	1 30-day trial (5)	1 (5)	2 (10)	2 (10)
Encryption/authentication/DH group	DES, 3DES, AES (128, 192, 256-bit), MD5, SHA-1/DH Groups 1, 2, 5, 14				
Key exchange	Key Exchange IKE, IKEv2, Manual Key, PKI (X.509), L2TP over IPSec				
Route-based VPN	Yes (OSPF, RIP)				
Certificate support	Verisign, Thawte, Cybertrust, RSA Keon, Entrust, and Microsoft CA for Dell SonicWALL-to-Dell SonicWALL VPN, SCEP				
Dead peer detection	Yes				
DHCP over VPN	Yes				
IPSec NAT Traversal	Yes				
Redundant VPN gateway	Yes				
Global VPN client platforms supported	Microsoft® Windows 2000, Windows XP, Microsoft® Vista 32/64-bit, Windows 7 32/64-bit				
SSL VPN platforms supported	Microsoft® Windows 2000 / XP / Vista 32/64-bit / Windows 7, Mac 10.4+, Linux FC 3+ / Ubuntu 7+ / OpenSUSE				
Mobile Connect platforms supported	iOS 4.2 and higher, Android™ 4.0 and higher				
Security services					
Deep Packet Inspection Service	Gateway Anti-Virus, Anti-Spyware, Intrusion Prevention and Application Intelligence and Control				
Content Filtering Service	(CFS) HTTP URL,HTTPS IP, keyword and content scanning ActiveX, Java Applet, and cookie blocking bandwidth management on filtering categories, allow/forbid lists				
Gateway-enforced Client Anti-Virus and Anti-Spyware	McAfee® or Kaspersky®				
Comprehensive Anti-Spam Service <sup>3</sup>	Supported				
Application Intelligence and Control	Application bandwidth management and control, prioritize or block application by signatures, control file transfers, scan for key words or phrases				
DPI SSL <sup>4</sup>	Provides the ability to decrypt HTTPS traffic transparently, scan this traffic for threats using Dell SonicWALL's Deep Packet Inspection technology (GAV/AS/IPS/ Application Intelligence/CFS), then re-encrypt the traffic and send it to its destination if no threats or vulnerabilities are found. This feature works for both clients and servers.				
Networking					
IP Address assignment	Static, (DHCP, PPPoE, L2TP and PPTP client), Internal DHCP server, DHCP relay				
NAT modes	1:1, 1:many, many:1, many:many, flexible NAT (overlapping IPs), PAT, transparent mode				
VLAN interfaces (802.1q)	25	35	25	50	200
Routing	OSPF, RIPv1/v2, static routes, policy-based routing, Multicast				
QoS	Bandwidth priority, maximum bandwidth, guaranteed bandwidth, DSCP marking, 802.1p				
IPv6	Yes				
Authentication	XAUTH/RADIUS, Active Directory, SSO, LDAP, Novell, internal user database, Terminal Services, Citrix				
Internal database/single sign-on users	100/100 Users	150/150 Users	250/250 Users	300/500 Users	1,000/1,000 Users
VoIP	Full H.323v1-5, SIP, gatekeeper support, outbound bandwidth management, VoIP over WLAN, deep inspection security, full interoperability with most VoIP gateway and communications devices				
System					
Zone security	Yes				
Schedules	One time, recurring				
Object-based/group-based management	Yes				
DDNS	Yes				
Management and monitoring	Web GUI (HTTP, HTTPS), Command Line (SSH, Console), SNMP v2: Global management with Dell SonicWALL GMS				
Logging and reporting	Analyzer, Local Log, Syslog, Solera Networks, NetFlow v5/v9, IPFIX with extensions, real-time visualization				
High availability	Optional Active/Passive with State Sync				
Load balancing	Yes, (Outgoing with percent-based, round robin and spill-over), (Incoming with round robin, random distribution, sticky IP, block remap and symmetrical remap)				
Standards	TCP/IP, UDP, ICMP, HTTP, HTTPS, IPSec, ISAKMP/IKE, SNMP, DHCP, PPPoE, L2TP, PPTP, RADIUS, IEEE 802.3				
Wireless standards	802.11 a/b/g/n, WPA2, WPA, TKIP, 802.1x, EAP-PEAP, EAP-TTLS				
WAN acceleration support <sup>5</sup>	Yes				
Built-in wireless LAN					
Standards	802.11a/b/g/n (WEP, WPA, WPA2, 802.11i, TKIP, PSK, 02.1x, EAP-PEAP, EAP-TTLS)		—	—	—
Virtual access points (VAPs)5-antennas (5 dBi Diversity)	External triple, detachable		—	—	—
Radio power-802.11a/802.11b/802.11g	15.5 dBm max/18 dBm max/17 dBm @ 6 Mbps, 13 dBm @ 54 Mbps		—	—	—
Radio power-802.11n (2.4GHz)/802.11n (5.0GHz)	19 dBm MCS 0, 11 dBm MCS 15/17 dBm MCS 0, 12 dBm MCS 15		—	—	—
Radio receive sensitivity-802.11a/802.11b/802.11g	-95 dBm MCS 0, -81 dBm MCS 15/-90 dBm @ 11Mbps/-91 dBm @ 6Mbps, -74 dBm @ 54 Mbps		—	—	—
Radio receive sensitivity-802.11n (2.4GHz)/802.11n (5.0GHz)	-89 dBm MCS 0, -70 dBm MCS 15/-95 dBm MCS 0, -76 dBm MCS 15		—	—	—
Hardware					
Interfaces	(7) 10/100/1000 copper gigabit ports, 2 USB, 1 console interface	(5) 10/100/1000 copper gigabit ports, 2 USB, 1 console interface module slot	(6) 10/100/1000 copper gigabit ports, 1 console interface, 2 USB		
Module	No	Yes	No	No	No
Memory (RAM)	32 MB compact Flash		512 MB		
Flash memory	32 MB compact Flash		512 MB compact Flash		
3G wireless/modem <sup>6</sup>	With 3G/4G USB adapter or modem		With 3G/4G USB adapter or modem		
Power supply	36W external		Single 180W ATX power supply		
Fans	No fan/1 internal fan	2 internal fans	2 fans		
Power input	11W/15W		10-240V, 50-60Hz		
Max power consumption	37BTU/50BTU		144BTU		
Total heat dissipation	37BTU/50BTU		219BTU		
Certifications	VPNC, ICSA Firewall 4.1		EAL4+, FIPS 140-2 Level 2, VPNC, ICSA Firewall 4.1, IPv6 Phase 1, IPv6 Phase 2		
Certifications pending	EAL4+, FIPS 140-2 Level 2, IPv6 Phase 1, IPv6 Phase 2		—		
Form factor and dimensions	1U rack-mountable/ 7.125 x 1.5 x 10.5 in/ 18.10 x 3.81 x 26.67 cm		1U rack-mountable/ 17 x 10.25 x 1.75 in/ 43.18 x 26 x 4.44 cm		1U rack-mountable/ 17 x 13.25 x 1.75 in/ 43.18 x 33.65 x 4.44 cm
Weight	1.95 lbs/0.88 kg/ 2.15 lbs/0.97 kg		3.05 lbs/1.38 kg/ 3.15 lbs/1.43 kg		8.05 lbs/ 3.65 kg
WEEE weight	V 3.05 lbs/1.38 kg/ 3.45 lbs/1.56 kg		4.4 lbs/2.0kg/ 4.65 lbs/2.11 kg		11.30 lbs/ 5.14 kg
Major regulatory	FCC Class A, CES Class A, CE, C-Tick, VCCI, Compliance MIC, UL, cUL, TUV/GS, CB, NOM, RoHS, WEEE				
Environment	40-105° F, 0-40° C				
MTBF	28 years/15 years		23 years/14 years		14.3 years
Humidity	5-95% non-condensing		10-90% non-condensing		

<sup>1</sup> Testing methodologies: Maximum performance based on RFC 2544 (for firewall). Actual performance may vary depending on network conditions and activated services. <sup>2</sup> Full DPI Performance/ Gateway AV/Anti-Spyware/IPS throughput measured using industry standard Spirent WebAvalanche HTTP performance test and Ixia test tools. Testing done with multiple flows through multiple port pairs. <sup>3</sup> Actual maximum connection counts are lower when Next-Generation Firewall services are enabled. <sup>4</sup> VPN throughput measured using UDP traffic at 1280 byte packet size adhering to RFC 2544. <sup>5</sup> Supported on the NSA 3500 and higher. <sup>6</sup> Not available on NSA 2400. <sup>7</sup> USB 3G card and modem are not included. See <http://www.DellSonicWALL.com/us/products/cardsupport.html> for supported USB devices. <sup>8</sup> The Comprehensive Anti-Spam Service supports an unrestricted number of users but is recommended for 250 users or less. <sup>9</sup> With Dell SonicWALL WXA Series Appliance.



Network Security Appliance 4500  
01-SSC-7012  
NSA 4500 TotalSecure\* (1-year)  
01-SC-7032



Network Security Appliance 3500  
01-SSC-7016  
NSA 3500 TotalSecure\* (1-year)  
01-SC-7033



Network Security Appliance 2400  
01-SSC-7020  
NSA 2400 TotalSecure\* (1-year)  
01-SC-7035



Network Security Appliance 250M  
01-SSC-9755  
Network Security Appliance 250M Wireless-N  
01-SSC-9757 (US/Canada)  
Network Security Appliance 250M TotalSecure\*  
01-SSC-9747  
Network Security Appliance 250M Wireless-N  
TotalSecure\*  
01-SSC-9748 (US/Canada)



Network Security Appliance 220  
01-SSC-9750  
Network Security Appliance 220 Wireless-N  
01-SSC-9752 (US/Canada)  
Network Security Appliance 220 TotalSecure\*  
01-SSC-9744  
Network Security Appliance 220 Wireless-N  
TotalSecure\*  
01-SSC-9745 (US/Canada)

For more information on Dell SonicWALL network security solutions, please visit [www.sonicwall.com](http://www.sonicwall.com).

\*Includes one-year of Gateway Anti-Virus, Anti-Spyware, Intrusion Prevention, and Application Intelligence and Control Service, Content Filtering Service and Dynamic Support 24x7.

Security Monitoring Services from Dell SecureWorks are available for this appliance Series. For more information, visit [www.dell.com/secureservices](http://www.dell.com/secureservices)

## Certifications

