

## SURGE PROTECTION FOR IP AND ANALOG APPLICATIONS

### ITW Linx P/N Description

CAT5-LAN-RJ45	Protects (4-pair) CAT5e, building entrance or LAN, RJ45, 16V clamping.
CAT5-POE-RJ45	Protects (4-pair) CAT5e, power over Ethernet, RJ45, 16V data, 62V power clamping.
CAT6-LAN	Protects (4-pair) CAT6, building entrance or LAN, 110 In & Out 16V clamping.
CAT6-POE	Protects (4-pair) CAT6, power over Ethernet, 110 In & Out, 16V data, 62V power clamping.
DL1200-CAT5	Protects high-performance CAT5e Outside Plant Cables as well as CAT5e UTP cables for LAN / Data applications-RJ45, 16V clamping.

## CAT5E BUILDING ENTRANCE PROTECTORS

### ITW Linx P/N Description

ML25-CAT5-LAN	Protects high-performance 25-pair CAT5e Outside Plant Cables as well as CAT5e UTP cables for LAN, 110 In & Out, 16V clamping.
ML25-CAT5-75	25-pair, Primary, 25-cards included, CAT5e, T1-ISDN applications, POE applications, 75V clamping.
ML25-CAT5-235	Protects high-performance 25-pair CAT5e Outside Plant Cables as well as CAT5e UTP cables for voice or T1 / ISDN applications. Analog applications, 110 In & Out, 235V clamping.
DL1200-CAT5	Protects high-performance CAT5e Outside Plant Cables as well as CAT5e UTP cables for LAN applications - RJ45, 16V clamping.



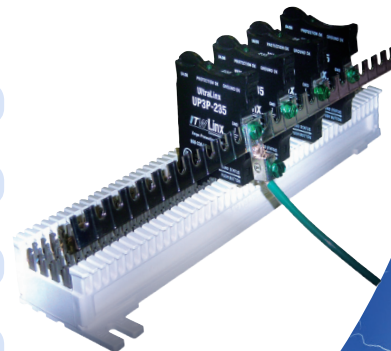
## UP3B / UP3P - VOICE, 66 BLOCK, UL PRIMARY / SECONDARY SURGE PROTECTORS

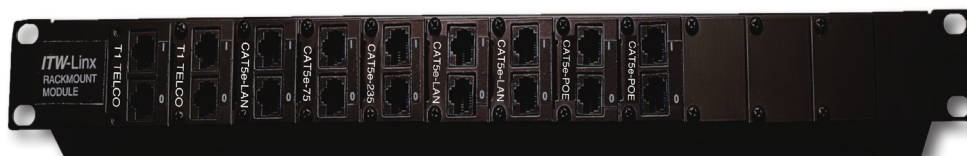
- Dual Indicator Lights
- Single Pair Protection
- Ideal for Retrofit Applications
- Cost Savings
- Streamlined Installation
- Solid-State Protection
- Lifetime Product Warranty
- Optimum Protection
- Sneak Current Protection

### ITW Linx P/N Description

UP3B-27	UL Primary & Secondary listed w/ 350mA fuse for voice/fax/modem lines, 27V clamping.
UP3B-39	UL Primary & Secondary listed w/ 350mA fuse for voice/fax/modem lines, 39V clamping.
UP3B-75	UL Primary & Secondary listed w/ 350mA fuse for voice/fax/modem lines, 75V clamping.
UP3B-100	UL Primary & Secondary listed w/ 350mA fuse for voice/fax/modem lines, 100V clamping.
UP3B-235	UL Primary & Secondary listed w/ 350mA fuse for voice/fax/modem lines, 235V clamping.
UP3P-75	UL Secondary listed w/ 160mA fuse for voice/fax/modem lines, 75V clamping.
UP3P-39	UL Secondary listed w/ 160mA fuse for voice/fax/modem lines, 39V clamping.
UP3P-235	UL Secondary listed w/ 160mA fuse for voice/fax/modem lines, 235V clamping.
*MGBSGL-1	Multiple ground bar and screw lug for 66 block protectors.

\* Must use groundbar with 66 block protectors





## PREMIER TELECOM SURGE PROTECTION FOR PBX/KSU'S

### ITW Linx P/N Outlets Description

M4KSU	4 Outlets	AC Surge, Avaya approved, expandable protection using SurgeGate™ Modules. 8ft. cord w/ right angle plug.
M8KSU	8 Outlets	AC Surge, Avaya approved, expandable protection using SurgeGate™ Modules. 8ft. cord w/ right angle plug.
M8COM	8 Outlets	AC Surge, (one) LAN line, (four) phone & DSL lines, (one) T1 line expandable protection using SurgeGate™ Modules. 8ft. cord w/ right angle plug.

## MODULAR PROTECTION - alone or expandable using SurgeGate™ AC protectors above

### ITW Linx P/N Description

MC04	Protects up to 4-lines using RJ14. Analog station set & central office line protector.
MC04X4-60	Protects up to 4-lines using RJ11. Analog station set & central office line protector.
MC025-60	Protects 25-pairs using RJ-21X, Analog lines.
MC04110	Protects up to 8-wires (4-pairs) using 110 In & Out block, 4X RJ11 or 2X RJ14 on output.
MC08110	Protects up to 16-wires (8-pairs) using 110 In & Out
MDS25	Protects up to twenty-five 2-wire or up to twelve 4-wire digital station using RJ-21X.
MLLT1	Protects up to 2-T1/ISDN using RJ48C / 48S.
CAT5-LAN	Protects (4-pair) CAT5e, 110 In & Out, 16V clamping.
CAT5-LAN-RJ45	Protects (4-pair) CAT5e, RJ45, 16V clamping.
CAT5-75	Protects (4-pair) CAT5e rated cable, 110 In & Out, 75V clamping.
CAT5-75-RJ45	Protects (4-pair) CAT5e rated cable, RJ45, 75V clamping.
CAT5-235	Protects (4-pair) CAT5e for voice / ISDN / Analog, 110 In & Out, 235V clamping.
CAT5-235-RJ45	Protects (4-pair) CAT5e for voice / ISDN / Analog, RJ45, 235V clamping.
CAT6-LAN	Protects (4-pair) CAT6, 110 In & Out, 6V clamping.
CAT6-75	Protects (4-pair) CAT6 rated cable, 110 In & Out, 75V clamping.
CAT6-235	Protects (4-pair) CAT6, voice / ISDN / Analog, 110 In & Out, 235V clamping.
CAT6A-LAN	Protects (4-pair) CAT6A rated cable, 110 In & Out, 16V clamping.
CAT5-POE	Protects (4-pair) CAT5e, power over Ethernet, 110 In & Out 16V data, 62V power clamping.

## RACK MOUNT AC SURGE PROTECTORS

### ITW Linx P/N Outlets Description

GRM0600	8 Outlets	15 amp, 19" RM AC Surge, 10ft. cord.
DL 1200-CAT5	12 Ports	Protects high-performance CAT5e Outside Plant Cables as well as CAT5e UTP cables for LAN / Data applications RJ45, 16V clamping.
RM-M12PVD		Modular Rack up to 12-individual protection modules.
RM12-CAT5-LAN		Protection Module, Solid State CAT5-LAN application w/ 16V clamping.
RM12-CAT5-75/POE		Protection Module, Solid State CAT5 w/ 75V clamping for digital/POE applications.
RM12-CAT5-235		Protection Module, Solid State CAT5 w/ 235V clamping for T1, Telco and Analog lines.

