



## Neutron Series Switches

# Neutron Series Managed Gigabit Switches

Optimal Performance, Enterprise Features & Robust Management Options

Neutron Series EWS Managed Gigabit Switches offer enterprise-class features, simplified network configuration, monitoring, and management options and optimal network performance for small to mid-size organizations.

Choose between 8-, 24-, and 48-Gigabit ports and standard or Power-over-Ethernet (PoE+)-ready Layer 2 switches with SFP ports. EWS Managed Switch model options also include desktop and rack mountable, fanless and SmartFan designs.

EWS Managed Gigabit Switches support easy deployment and operation. Organizations with limited IT support and budgets can create a reliable, efficiently managed network in no time.

### Features & Benefits

- 10/100/1000 GbE Ports
- On-Board Network Management Tools
- 802.3at/af PoE+ Ready & Non-PoE Switches
- Network Troubleshooting, Monitoring & Email Alerts
- SFP Slots Extend Connectivity via Fiber Uplinks, Redundancy & Failover
- Full-Featured Layer 2 Switching
- Topology View Displays Network Devices & Relationships
- Added Bonus: License-Free AP Management Built-In
- Added Bonus: License-Free Remote Management With ezMaster™

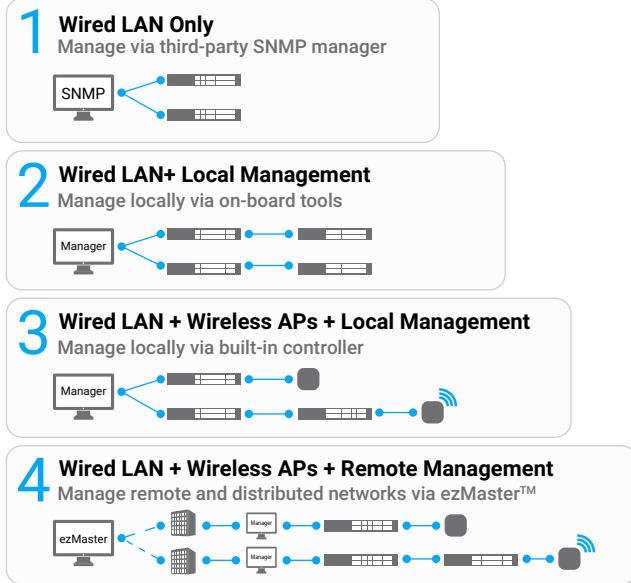


## In-Switch Management

### Simplified Network Management, Visibility & Troubleshooting

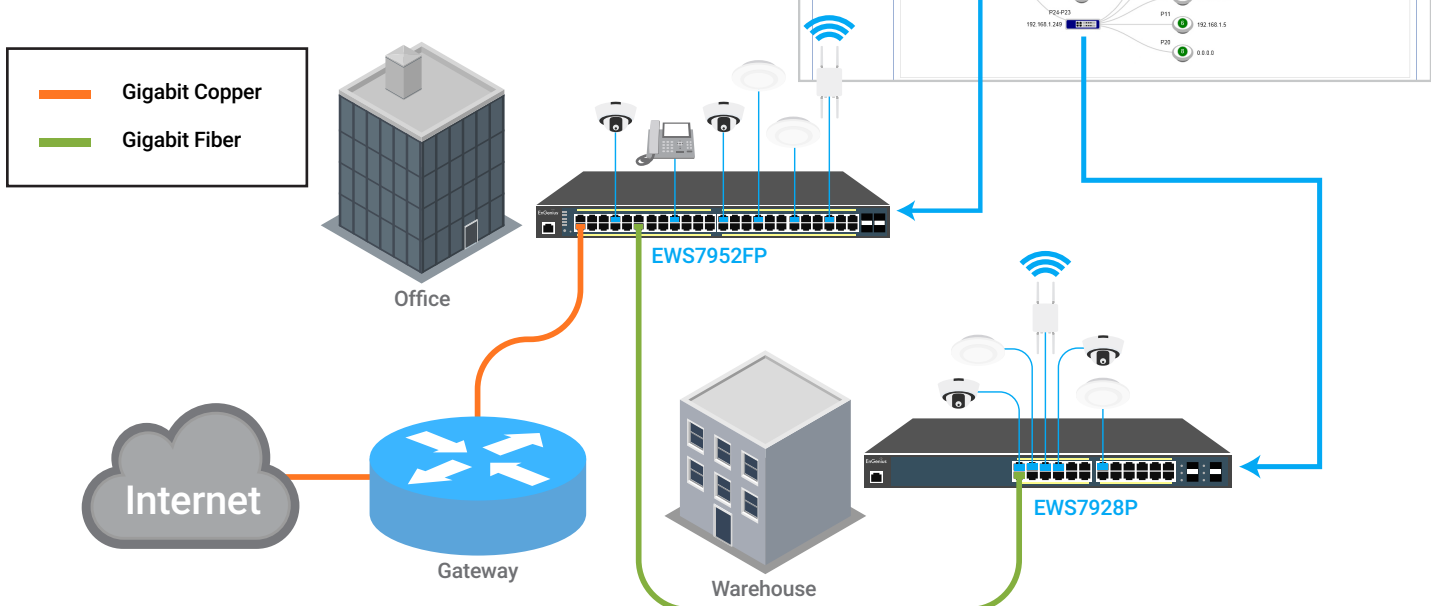
Achieve network management, visibility, and troubleshooting locally through the switch's on-board Web interface tools. Establish event-based email alerts for notification of predetermined activities.

### Supports 4 Different Types of Management



### In-Depth Network Visibility

Network Topology View automatically maps the network deployment to display device relationships across the infrastructure. Troubleshoot issues without manual tracking, and access the management interface of other EWS Switches directly from Topology View with QuickLink.



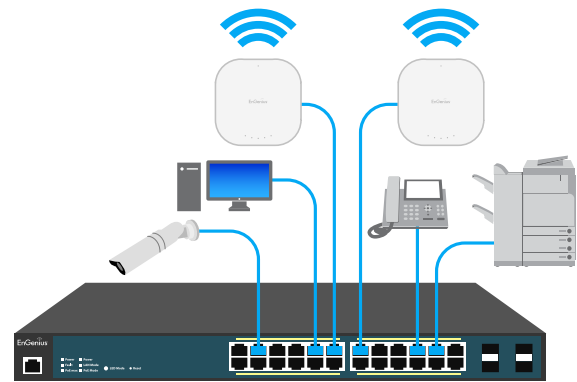
## Full-Feature Layer 2 Gigabit Switching

### High-Speed Gigabit

Provide reliable Gigabit access for networked devices and reduce delays that interrupt communications. The switch's SFP slots are suitable for connecting wired network segments throughout buildings that extend beyond the limitations of Ethernet cabling.

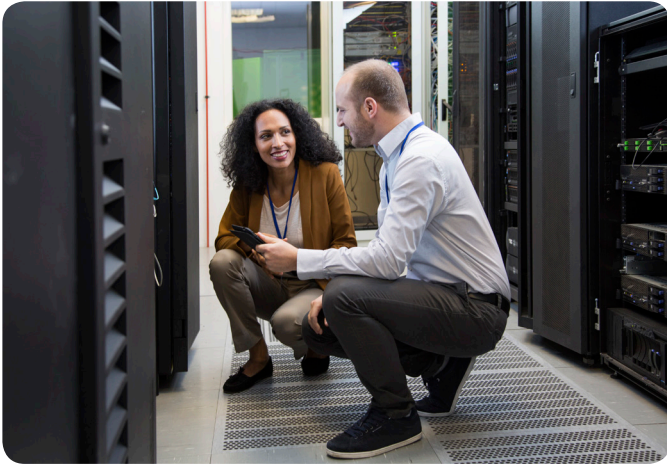
### Power & Connect Multiple Devices

Optimize the installation and power management of network devices such as access points, IP cameras, and VoIP phones by providing 802.3at/af PoE+ power and data on all ports. Regulate power budgets according to device requirements and remotely power cycle individual ports.



## Network Traffic Management

Neutron full-featured Layer 2 Switches offer performance-enhancing features that reduce multicasting traffic, speed up port blocking and port forwarding, and increase bandwidth via load balancing. Control each port's available bandwidth speeds for connected devices like APs in areas where more or less speed is needed, such as in lobbies or conference rooms.



## VLAN/Voice & Quality of Service

Segment the network by departments or traffic types for increased performance and security with 802.1Q VLAN. While 802.1p Class of Service prioritizes compliant VoIP and video traffic ensuring bandwidth intensive, time-sensitive data is forwarded immediately for clear, smooth voice and video delivery.

## Access Control & Security

Protect the network via 802.1X port-based client authentication and security through a RADIUS server. Utilizing Access Control Lists (ACLs), administrators can see who has access to network segments while screening traffic from unauthorized MAC or IP addresses. Establish a Guest VLAN to grant and limit Internet resources for visitors while keeping the network secure.

## Network Monitoring & Troubleshooting

Enable 3rd party SNMP management and monitor the network's performance by viewing port statistics, system logs, and RMON data. Perform port diagnostics through Ping Tests, diagnose cable failure and trace the route data takes through the network to troubleshoot slowdowns or connection issues.

## Added Bonus: License-Free Access Point & Remote Management

### Locally Manage Wireless Access Points With On-Board Tools

Quickly discover, configure and monitor Neutron EWS Access Points and manage up to 50 APs within the local subnet, license-free, through the switch's suite of wireless management features.

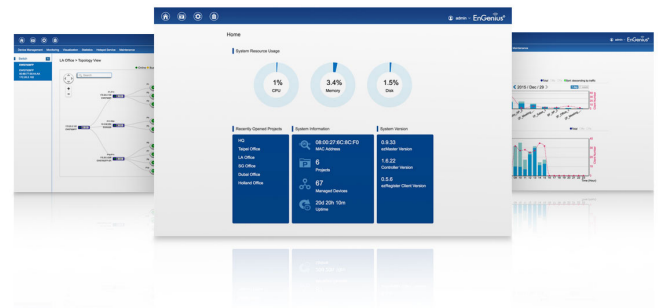
### Centrally Manage Wired & Wireless Devices via ezMaster

Manage Neutron EWS Access Points, Switches, and IP Cameras through ezMaster Network Management Software for remote, centralized management of hundreds of EWS devices across the network or multiple sites regardless of size or location without licensing or subscription fees.









### Simplified Device Management




Centralized device management is easy through both the switch's on-board tools and ezMaster Software. Group Neutron devices for streamlined configuration, provisioning and monitoring; view wired and wireless traffic via a comprehensive at-a-glance dashboard and get rich analytics and reporting.



## Managed Gigabit PoE+ Switches

						
Models	EWS7952FP	EWS1200-28TFP	EWS7928FP	EWS7928P	EWS5912FP	EWS2910P
10/100/1000 Base-T, PoE+	48	24	24	24	8	8
10/100/1000 SFP Ports	4	4	4	4	2	2
RJ45 Console Port	•	•	•	•	•	-
Auto Uplink Gigabit Ports	-	-	-	-	•	-
Rackmount	19" 1U	19" 1U	19" 1U	19" 1U	13" 1U	9.45" (desktop)
Total PoE Budget	740W	410W	370W	185W	130W	61.6W
PoE+ Capable Ports	1-48	1-24	1-24	1-24	1-8	1-8 (802.3af only)
Switching Capacity	104 Gbps	56 Gbps	56 Gbps	56 Gbps	24 Gbps	20 Gbps
Forwarding Mode	Store-and-forward	Store-and-forward	Store-and-forward	Store-and-forward	Store-and-forward	Store-and-forward
MAC Address Table	8k	8k	8k	8k	8k	8k
Packet Buffer Memory	1.5 MB	512 KB	512 KB	512 KB	512 KB	512 KB
Power Source	100 to 240 VAC 50/60Hz	100 to 240 VAC 50/60Hz	100 to 240 VAC 50/60Hz	100 to 240 VAC 50/60Hz	100 to 240 VAC 50/60Hz	100 to 240 VAC 50/60Hz
Full Load Power Consumption	885.23 Watts	409.74 Watts	452.06 Watts	235.3 Watts	152.8 Watts	79.4 Watts
Management	Wireless AP Controller, ezMaster Network Management Software, Web GUI, CLI, SNMP, RMON, HTTPS, Dual Image					
Wireless EWS AP Support	Up to 50	Up to 50	Up to 50	Up to 50	Up to 50	Up to 20
Advanced QoS with IPv4/IPv6 Multicast Filtering	IGMP and MLD Snooping					
Auto-VoIP	•	•	•	•	•	•
VLANs	Max 4094 Static Groups, Voice VLAN					
Network Standards	IEEE 802.3 Ethernet IEEE 802.3i 10Base-T Ethernet IEEE 802.3u 100Base-TX Fast Ethernet IEEE 802.3ab 1000Base-T Gigabit Ethernet IEEE 802.3x Full-Duplex Flow Control IEEE 802.3z Gigabit Ethernet 1000Base-SX/LX IEEE 802.3ad Link Aggregation (Trunking) IEEE 802.1D Spanning Tree Protocol (STP) IEEE 802.1w Rapid Spanning Tree Protocol (RSTP) IEEE 802.1s Multiple Spanning Tree Protocol (MSTP) IEEE 802.1Q VLAN Tagging IEEE 802.1ab Link Layer Discovery Protocol (LLDP) IEEE 802.1p Quality of Service IEEE 802.1X RADIUS Access Control IEEE 802.3az Energy Efficient Ethernet					

Managed Gigabit Smart Switches

			
Models	EWS1200-52T	EWS1200-28T	EWS1200D-10T
10/100/1000 Base-T Ports	48	24	8
100/1000 SFP Ports	4	4	2
Console Port	1 RJ45	1 RJ45	-
Rackmount	19" 1U	19" 1U	9.44" (desktop)
Switching Capacity	104 Gbps	56 Gbps	20 Gbps
Forwarding Mode	Store-and-forward	Store-and-forward	Store-and-forward
MAC Address Table	8k	8k	8k
Packet Buffer Memory	1.5 MB	512 KB	512 KB
Power Source	60W Internal Power	30W Internal Power	DC12V/1A External
Full Load Power Consumption	54.02W	24.48W	6.59W
Management	Wireless AP Controller, ezMaster Network Management Software, Web GUI, CLI, SNMP, RMON, HTTPS, Dual Image		
Wireless EWS AP Support	Up to 50	Up to 50	Up to 50
Advanced QoS with IPv4/IPv6 Multicast Filtering	IGMP and MLD Snooping		
Auto-VoIP	.	.	.
VLANs	Max 4094 Static Groups, Voice VLAN		
Network Standards	IEEE 802.3 Ethernet IEEE 802.3i 10Base-T Ethernet IEEE 802.3u 100Base-TX Fast Ethernet IEEE 802.3ab 1000Base-T Gigabit Ethernet IEEE 802.3x Full-Duplex Flow Control IEEE 802.3z Gigabit Ethernet 1000Base-SX/LX IEEE 802.3ad Link Aggregation (Trunking) IEEE 802.1D Spanning Tree Protocol (STP) IEEE 802.1w Rapid Spanning Tree Protocol (RSTP) IEEE 802.1s Multiple Spanning Tree Protocol (MSTP) IEEE 802.1Q VLAN Tagging IEEE 802.1ab Link Layer Discovery Protocol (LLDP) IEEE 802.1p Quality of Service IEEE 802.1X RADIUS Access Control IEEE 802.3az Energy Efficient Ethernet		

## Technical Specifications

<b>Network Ports</b>
<b>EWS2910P</b>
8 x 10/100/1000 Mbps Ports
2 x 100/1000 Mbps SFP Slot
<b>EWS5912FP</b>
8 x 10/100/1000 Mbps Ports
2 x 100/1000 Mbps SFP Slot
2 x 100/1000 Mbps Uplink
1 x RJ45 Console Port
<b>EWS7928P / EWS7928FP / EWS1200-28TFP</b>
24 x 10/100/1000 Mbps Ports
4 x 100/1000 Mbps SFP Slot
1 x RJ45 Console Port
<b>EWS7952FP</b>
48 x 10/100/1000 Mbps Ports
4 x 100/1000 Mbps SFP Slot
1 x RJ45 Console Port
<b>EWS1200D-10T</b>
8 x 10/100/1000 Mbps Ports
2 x 100/1000 Mbps SFP Ports
<b>EWS1200-28T</b>
24 x 10/100/1000 Mbps Ports
4 x 100/1000 Mbps SFP Ports
1 x RJ45 Console Port
<b>EWS1200-52T</b>
48 x 10/100/1000 Mbps Ports
4 x 100/1000 Mbps SFP Ports
1 x RJ45 Console Port
<b>Switching Capacity</b>
<b>EWS2910P:</b> 20 Gbps
<b>EWS5912FP:</b> 24 Gbps
<b>EWS7928P:</b> 56 Gbps
<b>EWS1200-28TFP:</b> 56 Gbps
<b>EWS7928FP:</b> 56 Gbps
<b>EWS7952FP:</b> 104 Gbps
<b>EWS1200D-10T:</b> 20 Gbps
<b>EWS1200-28T:</b> 56 Gbps
<b>EWS1200-52T:</b> 104 Gbps
<b>Forwarding Mode</b>
Store and Forward
<b>SDRAM</b>
256MB
<b>Flash Memory</b>
32MB
<b>EWS1200D-10T / EWS1200-28T</b>
Packet Buffer Memory: 512 KB
<b>EWS1200-52T</b>
Packet Buffer Memory: 1.5 MB

<b>PoE Capability</b>
<b>EWS2910P</b>
PoE Standard: Ports 1~8 Support IEEE 802.3af
<b>EWS5912FP</b>
PoE Standard: Ports 1~8 Support IEEE 802.3at/af
<b>EWS7928P / EWS7928FP / EWS1200-28TFP</b>
PoE Standard: Ports 1~24 Support IEEE 802.3at/af
<b>EWS7952FP</b>
PoE Standard: Ports 1~48 Support IEEE802.3at/af
<b>PoE Capable Ports</b>
<b>EWS2910P</b> Ports 1~8 Can Output Up to 15W
<b>EWS5912FP</b> Ports 1~8 Can Output Up to 30W
<b>EWS7928P</b> All Gigabit Ethernet Ports/Up to 30W
<b>EWS1200-28TFP</b> All Gigabit Ethernet Ports/Up to 30W
<b>EWS7928FP</b> All Gigabit Ethernet Ports/Up to 30W
<b>EWS7952FP</b> All Gigabit Ethernet Ports/Up to 30W
<b>Total PoE Budget</b>
<b>EWS2910P:</b> 61.6W
<b>EWS5912FP:</b> 130W
<b>EWS7928P:</b> 185W
<b>EWS7928FP:</b> 370W
<b>EWS1200-28TFP:</b> 410W
<b>EWS7952FP:</b> 740W
<b>Power &amp; Source</b>
<b>EWS7952FP</b>
Full Load Power Consumption: 885.23 Watts
110 to 240 VAC 50/60Hz
<b>EWS1200-28TFP</b>
Full Load Power Consumption: 409.74 Watts
110 to 240 VAC 50/60Hz
<b>EWS7928FP</b>
Full Load Power Consumption: 452.06 Watts
110 to 240 VAC 50/60Hz
<b>EWS7928P</b>
Full Load Power Consumption: 235.3 Watts
110 to 240 VAC 50/60Hz
<b>EWS5912FP</b>
Full Load Power Consumption: 152.8 Watts
110 to 240 VAC 50/60Hz
<b>EWS2910P</b>
Full Load Power Consumption: 79.4 Watts
110 to 240 VAC 50/60Hz
<b>EWS1200D-10T</b>
Full Load Power Consumption: 6.59W
DC12V/1A External
<b>EWS1200-28T</b>
Full Load Power Consumption: 24.48W
30W Internal Power
<b>EWS1200-52T</b>
Full Load Power Consumption: 54.02W
60W Internal Power

<b>LED Indicators</b>
1 x Power LED
1 x Fault LED
1 x PoE Max LED
1 x LAN Mode LED
1 x PoE Mode LED
Copper Ports: LAN/PoE Mode, Link/Act
SFP Ports: Link/Act, Speed (EWS2910P, EWS7952FP, EWS1200D-10T, EWS1200-28T, & EWS120052T only)
<b>Software Features</b>
<b>Layer 2 Features</b>
802.3ad Link Aggregation
- Maximum of 8 Groups/8 Ports per Group
Port Mirroring
- One-to-One
- Many-to-One
Spanning Tree Protocol
- 802.1D Spanning Tree Protocol (STP)
- 802.1w Rapid Spanning Tree Protocol (RSTP)
- 802.1s Multiple Spanning Tree Protocol (MSTP)
MAC Address Table
- 8K Entries
Static MAC Address
- 256 Entries
802.1ab Link Layer Discovery Protocol
IGMP Snooping
- IGMP v1/v2/v3 Snooping
- Supports 4094 IGMP Groups
- IGMP per VLAN
- IGMP Snooping Querier
- IGMP Snooping Fast Leave
MLD Snooping
- MDL Snooping v1/v2
- Supports 4,094 MLD Groups
- MLD per VLAN
Jumbo Frame
- Up to 9,216 bytes
802.3x Flow Control
802.3az Energy Efficient Ethernet
<b>VLAN</b>
802.1Q Support
VLAN Group
- Max 4,094 Static VLAN Groups
Voice VLAN

## Technical Specifications continued

### QoS

802.1p Quality of Service
- 8 Queues per Port
Queue Handling
- Strict
- Weighted Round Robin (WRR)
QoS Based on:
- 802.1p Priority
- DSCP
Bandwidth Control
- Port-Based (Ingress/Egress, 64 Kbps~1000 Mbps)
Broadcast/Unknown Multicast/Unknown Unicast Storm Control

### Access Control List (ACL)

Layer 2/3
- Supports Maximum 32 Entries (ACL)
- Supports Maximum 256 Entries (ACE)
ACL Based on:
- MAC Address
- VLAN ID
- 802.1p Priority
- Ethertype
- IP Address
- Protocol Type
- DSCP

### Security

802.1X
- Guest VLAN
- Port-Based Access Control
Supports RADIUS Authentication
Port Security
- Up to 256 MAC Addresses per Port
Port Isolation
DoS Attack Prevention
BPDU Attack Prevention

### Monitoring

Port Statistics
System Log
RMON

### Management

Web Graphical User Interface (GUI)
Command Line Interface (CLI)
BootP/DHCP Client/DHCPv6 Client
SSH Server
Telnet Server
TFTP Client
HTTPS
SNMP

### Management continued

Web Graphical User Interface (GUI)
Command Line Interface (CLI)
BootP/DHCP Client/DHCPv6 Client
SSH Server
Telnet Server
TFTP Client
HTTPS
SNMP
- Supports v1/v2c/v3
SNMP Trap
SNTP
Configuration Restore/Backup
Dual Images
Email Alerts

### PoE Management

Power On/Off Per Port
Power Class Configuration
Power Feeding with Priority
User Defined Power Limit

### Diagnostic

Cable Diagnostic
Ping Test
Trace Route
IPv6 Ping Test

### MIB/RFC Standards

RFC1213
RFC1493
RFC1757
RFC2674
RFC 2863

### Wireless Management Features (with Neutron Series Access Points & ezMaster)

AP Supported (up to 50 APs in controller mode)
Access Point Auto Discovery & Provisioning
Access Point Auto IP-Assignment
Access Point Group Management
Remote Access Point Rebooting
Access Point Device Name Editing
Access Point Radio Settings
Band Steering
Traffic Shaping
Fast Roaming (802.11k & 802.11r)
Pre-Authentication (802.11i & 802.11x)
PMK Caching (802.11i)
RSSI Threshold
Access Point Client Limiting
Client Fingerprinting
Wireless Security (WEP, WPA/WPA2 Enterprise, WPA/WPA2 PSK)

### Wireless Management Features (with Neutron Series Access Points & ezMaster) continued

AP VLAN Management
VLANs for Access Point- Multiple SSIDs
Secured Guest Network
Capture Portal
Access Point Status Monitoring
Rogue AP Detection
Email Alert
Wireless Client Monitoring
Background Scanning
Wireless Traffic & Usage Statistics
Real-Time Throughput Monitoring
Visual Topology View
Floor Plan View
Map View
Wireless Coverage Display
Secure Control Messaging (SSL Certificate)
Local MAC Address Database
Remote MAC Address Database (RADIUS)
Unified Configuration Import/Export
Intelligent Diagnostics
Bulk Firmware Upgrade Capability
One-Click Update
Kick/Ban Clients
Wi-Fi Scheduler

### ezMaster System Requirements

#### Recommended environment for managing up to 500 APs

CPU: Intel® Core™ i3 3.6 GHz dual-core or above
RAM: 4 GB minimum
HDD: 500 GB (actual requirement dependent on log size)
OS: Microsoft® Windows® 7 or later + VMware® Player 7.0 or compatible virtualization software
Operating: 32°F to 122°F (0°C to 50°C)
Storage Temperature: -40°F to 158°F (-40°C to 70°C)

#### Recommended environment for managing up to 1,000+ APs

CPU: Intel® Core™ i5 3.2 GHz quad-core or above
RAM: 4 GB minimum
HDD: 500 GB (actual requirement dependent on log size)
OS: Microsoft® Windows® 7 or later + VMware® Player 7.0 or compatible virtualization software

#### Browser Requirements

Internet Explorer 10 or better
Firefox 34.0 or better
Chrome 31.0 or better
Safari 8.0 or better

#### Network Topology Requirements

At sites where APs are deployed: A DHCP-enabled network for APs to obtain an IP address
---

## Technical Specifications continued

### Environmental & Mechanical

#### Temperature Range

##### EWS2910P

Operating: 32°F to 104°F (0°C to 40°C)

Storage Temperature: -40°F to 158°F (-40°C to 70°C)

##### EWS5912FP / EWS7928P / EWS1200-28TFP / EWS7928FP / EWS7952FP

Operating: 32°F to 122°F (0°C to 50°C)

Storage Temperature: -40°F to 158°F (-40°C to 70°C)

##### EWS1200D-10T

Operating: 32°F to 104°F (0°C to 40°C)

Storage: -40°F to 158°F (-40°C to 70 °C)

##### EWS1200-28T / EWS1200-52T

Operating: 32°F to 122°F (0°C to 50°C)

Storage: -40°F to 158°F (-40°C to 70 °C)

#### Humidity (non-condensing)

Operating: 5% - 95%

### Device Dimensions & Weights

#### EWS2910P

Weight: 1.36 lbs. (620 g)

Width: 9.45" (240 mm)

Length: 4.13" (105 mm)

Height: 1.06" (27 mm)

#### EWS5912FP

Weight: 4.4 lbs. (1.9 kg)

Width: 13.00" (330.20 mm)

Length: 9" (228.60 mm)

Height: 1.73" (43.94 mm)

#### EWS7928P

Weight: 7.82 lbs. (3.5 kg)

Width: 17.3" (439 mm)

Length: 10.24" (260 mm)

Height: 1.73" (44 mm)

### Device Dimensions & Weights continued

#### EWS1200-28TFP

Weight: 7.82 lbs. (3.5 kg)

Width: 17.3" (439 mm)

Length: 10.24" (260 mm)

Height: 1.73" (44 mm)

#### EWS7928FP

Weight: 10.36 lbs. (4.7 kg)

Width: 17.3" (439 mm)

Length: 12.2" (310 mm)

Height: 1.73" (44 mm)

#### EWS7952FP

Weight: 14.15 lbs. (6.4 kg)

Width: 17.32" (439.9 mm)

Length: 16.14" (409.9 mm)

Height: 1.73" (43.9 mm)

#### EWS1200D-10T

Weight: 1.33 lbs. (.61 kg)

Width: 9.44" (240 mm)

Depth: 4.13" (105 mm)

Height: 1.06" (27 mm)

#### EWS1200-28T

Weight: 6.6 lbs. (3 kg)

Width: 17.32" (440 mm)

Depth: 10.23" (260 mm)

Height: 1.73" (44 mm)

#### EWS1200-52T

Weight: 8 lbs. (3.68 kg)

Width: 17.32" (440 mm)

Depth: 10.23" (260 mm)

Height: 1.73" (44 mm)

### Package Contents

1x EWS Managed Gigabit Switch

1x Quick Installation Guide

#### EWS2910P

1x Power Adapter

1x Power Cord

1x Wall Mount Kit

1x Ground Screw Set

#### EWS5912FP / EWS7928P / EWS7928FP / EWS- 7952FP

1x Power Cord

1x RJ45 Console Cable

1x Rack Mount Kit

#### EWS1200D-10T

1x Power Adapter

1x Wall-Mount Kit

#### EWS1200-28T

1x Power Cord

1x Rack Mount Kit

#### EWS1200-52T

1x Power Cord

1x Rack Mount Kit

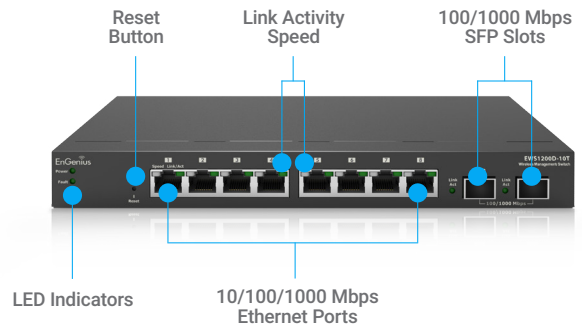
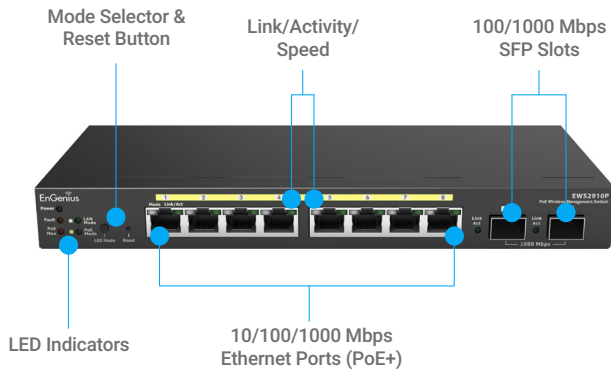
### Certifications

CE, FCC, IC

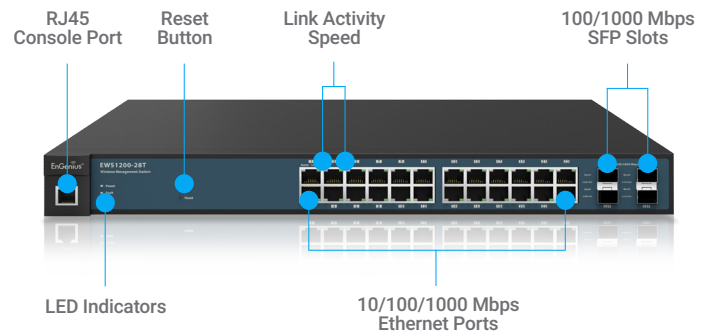
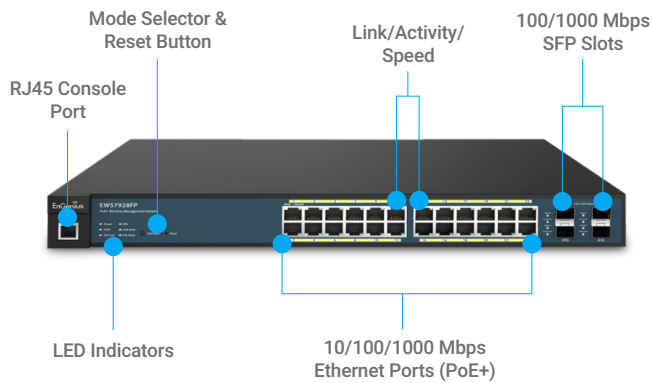
### Warranty

1 Year

## Desktop



## Rackmount



Maximum data rates are based on IEEE 802.11 standards. Actual throughput and range may vary depending on distance between devices or traffic and bandwidth load in the network.

EnGenius Technologies | 1580 Scenic Ave. Costa Mesa, CA 92626

Email: [partners@engeniustech.com](mailto:partners@engeniustech.com) | Phone: 888-735-7888 | Website: [engeniustech.com](http://engeniustech.com)

Version 1.0 02/10/2017

Features and specifications subject to change without notice. Trademarks and registered trademarks are the property of their respective owners. For United States of America: Copyright © 2017 EnGenius Technologies, Inc. All rights reserved.