

# NetVanta Ethernet Switches

## Unified Business Solutions



# Flexible, innovative switching solutions.

*ADTRAN® provides a full line of powerful switching solutions for all your network needs. With ADTRAN's award-winning and innovative NetVanta® Ethernet switches, routers, Virtual Private Networking (VPN), wireless, and IP telephony products, it is easy to find a quality solution to meet your specific requirements for IP business communications.*

Our portfolio of business-class switching solutions is perfect for Small- and Medium-sized Businesses (SMBs) or multi-site enterprise networks. These solutions address today's highest networking priorities, from bandwidth expansion to network security.

You can select from a full range of products, including multiservice and fixed-port routers with Ethernet switching, as well as, Fast Ethernet, Power over Ethernet (PoE), and Gigabit Ethernet switches.

#### ■ **Bandwidth Expansion**

ADTRAN offers a breadth of products from Fast and Gigabit Ethernet switches to integrated switch-router platforms with security and wireless access. Switching products range in port count from 24 to 48 ports and from Fast to Gigabit platforms to accommodate your network's most bandwidth-intensive applications.

#### ■ **VoIP Migration**

NetVanta switching solutions make it easy to transition your network to accommodate Voice over IP (VoIP) applications. ADTRAN's Ethernet switching solutions are VoIP-ready with 802.3af, 802.3at and Legacy PoE, Quality of Service (QoS),

and Class of Service (CoS). Robust multiservice routers with on-board switching also provide a unique, cost-effective Wide Area Network/Local Area Network (WAN/LAN) solution for all-in-one SMB networking.

#### ■ **Wireless LAN**

A comprehensive wireless networking solution is available for organizations that need business-class features, security and reliability at an affordable price. Wireless Access Points (WAPs) from ADTRAN are PoE capable; have the ability to segment wireless networks through the use of Virtual Access Points (VAPs); and can disable SSID broadcasts.

#### ■ **Network Security**

The NetVanta Series of Ethernet Switches provides various lines of defense against common security threats. Denial of Service (DoS) protection identifies and blocks common network attacks. Desktop security audit utilizes DHCP in conjunction with Microsoft Network Access Protection (NAP) protocol to monitor the health of client computers and ensure that systems connected to the network

are using appropriate corporate policies, such as firewall and antivirus settings. Security audit is an ADTRAN Operating System (AOS) feature that identifies possible vulnerabilities to network security. The security portfolio features support for 802.1Q trunking for Virtual LANs (VLANs) to allow network managers to segregate traffic, and enhance networking performance.

#### ■ **Power Conservation**

The telecommunications industry is embracing the move to "green" technology with the establishment of new standards that will revolutionize the industry. As networks continue the transition to all-IP architectures, and the demand for bandwidth continues to increase, the need for energy-efficient power consumption and "green" technologies will hold an even greater role. NetVanta Switches offer several ways to conserve on power. They efficiently deploy only the needed power to a device and also offer the ability to schedule a port to be activated and deactivated based on time-of-day. This conserves on power usage and utility costs.



## Powerful switching solutions for all your networking needs.

### Fast Ethernet and Gigabit Ethernet Switches

The NetVanta Series of Ethernet Switches include full-featured, managed, Layer 2 and Layer 3, Fast Ethernet, Gigabit Ethernet, and PoE switches. The NetVanta Fast Ethernet series offers 24-48 ports, as well as Gigabit uplink ports for stacking and optional PoE. The NetVanta series of Gigabit Ethernet Switches provides affordable, higher capacity switching for Gigabit-to-the-desktop applications and even PoE. The Gigabit series is available from 24 to 48 ports and features 10 Gigabit uplink capabilities for multi-floor, and campus aggregation switching needs that demand multi-layer, wire-speed switching capacity. Business-class features, flexible management, and a favorable price point set these switches apart from all other switches in their category.

### Multiservice Routers

Delivering greater throughput, the NetVanta 3448, NetVanta 3458 and NetVanta 1335 Multiservice Access Routers offer a variety of networking functionality wrapped into a single chassis. These VoIP-ready, all-in-one routers include a modular

WAN interface, IP router, PoE switch (Layer 2 or Layer 3), firewall, and VPN. In addition to the convenience and ease-of-use of a single platform, these multi-function routers contribute to a reduced Total Cost of Ownership (TCO).

### Wireless Access Points

Wi-Fi® your NetVanta network with the NetVanta 150 WAP and 802.11a/b/g radio support (at speeds up to 54 Mbps) and advanced security features like 802.1x authentication, WPA/WPA2, and the disabling of SSID broadcasts. Through the use of VAPs, these wireless products have the ability to segment a wireless network securely. These business-class wireless products are perfect for the corporate environment in need of a secure, integrated WLAN solution.



## NetVanta Switches

### Fast Ethernet Switches

Products	4
Solutions	6

### Gigabit Ethernet (GigE) Switches

Products	8
Solutions	10

### Multiservice Routers

Products	12
Solutions	14

### Routers with Integral Fast Ethernet Switch

Products	16
----------	----

### Switch Product Comparison

17

## VoIP made easy.

*The NetVanta 1200 Series is part of a family of full-featured, managed, Layer 2 Ethernet, and PoE switches. There are many compelling reasons to implement a NetVanta switching solution as part of your networking plan.*

### VoIP-ready

The NetVanta 1200 Series includes full-featured, managed, Layer 2 Fast Ethernet switches. The NetVanta 1234 offers 24-ports Fast Ethernet and the NetVanta 1238 features 48-ports. Each switch comes with Gigabit uplink ports and optional PoE. Designed for fast, secure LAN switching, the NetVanta 1200 Series supports robust QoS features, and Link Layer Discovery Protocol-Media Endpoint Discovery (LLDP-MED) making NetVanta switches ideal for use with VoIP applications. The business-class features, flexible management, and a favorable price point set these switches apart from all others in their category.

### Intelligent Switching

The NetVanta Series of switches offers advanced switching features — starting with intelligent power management. The power conservation feature has the ability to power down devices when not in use.

In addition to providing energy efficiency, this feature also turns off IP phones and WAPs after business hours to minimize security risks. To aid in troubleshooting, an intelligent cable diagnostics feature identifies cable length and detects shorts or opens in Ethernet cables.

### Affordability for SMBs

NetVanta switching solutions offer a low initial investment, coupled with simplified installation, configuration and management without sacrificing functionality or reliability. NetVanta switching solutions significantly lower TCO and improve Return on Investment (ROI). These full-featured solutions are priced free of hidden charges, such as mandatory maintenance agreements and costly firmware downloads. In addition, they are backed by a limited lifetime warranty and unlimited toll-free technical support.



#### NetVanta 1238

- 48-port, managed, Layer 2 Fast Ethernet switch
- 4 Gigabit ports for uplinks or stacking
- 2 SFP module slots for optical connections
- Non-blocking switching capacity up to 17.6 Gbps
- 1U, 19-inch rackmount metal enclosure



#### NetVanta 1238 PoE

- 48-port, managed, Layer 2 Fast Ethernet switch
- 4 Gigabit ports for uplinks or stacking
- 2 SFP module slots for optical connections
- Non-blocking switching capacity up to 17.6 Gbps
- 802.3af and Legacy PoE
- 1U, 19-inch rackmount metal enclosure



**ADTRAN's NetVanta family of voice and data networking solutions is designed specifically to meet the needs of the value-driven SMB by providing a reliable, easy-to-use, business-class product at an SMB-friendly price point.**



ADTRAN NetVanta products are VoIP-Ready! Inherent QoS functionality supports Voice over IP needs!



### **NetVanta Fast Ethernet Switches At-A-Glance**

- Full-featured, managed, Layer 2, Fast Ethernet, and Power over Ethernet switches
- Interoperable in established, multi-vendor networks
- Up to 17.6 Gbps switching capacity, non-blocking
- Gigabit SFP/1000Base-T uplink capability
- Link Aggregation
- MAC-based port security
- 802.1Q tagged and port-based VLANs
- LLDP/LLDP-MED for easy IP phone configuration
- Wi-Fi Access Controller for centralized management of NetVanta WAPs
- Cable diagnostics detects shorts or opens in Ethernet cables
- Port Scheduler for power saving and increased security
- Feature-rich AOS
- Easily recognizable Command Line Interface (CLI)
- Intuitive Web-based Graphical User Interface (GUI)
- Free firmware updates
- Limited lifetime warranty
- Next business day advance replacement



#### **NetVanta 1234**

- 24-port, managed, Layer 2 Fast Ethernet switch
- 4 Gigabit ports for uplinks or stacking
- 2 SFP module slots for optical connections
- Non-blocking switching capacity up to 12.8 Gbps
- 1U, 19-inch rackmount metal enclosure

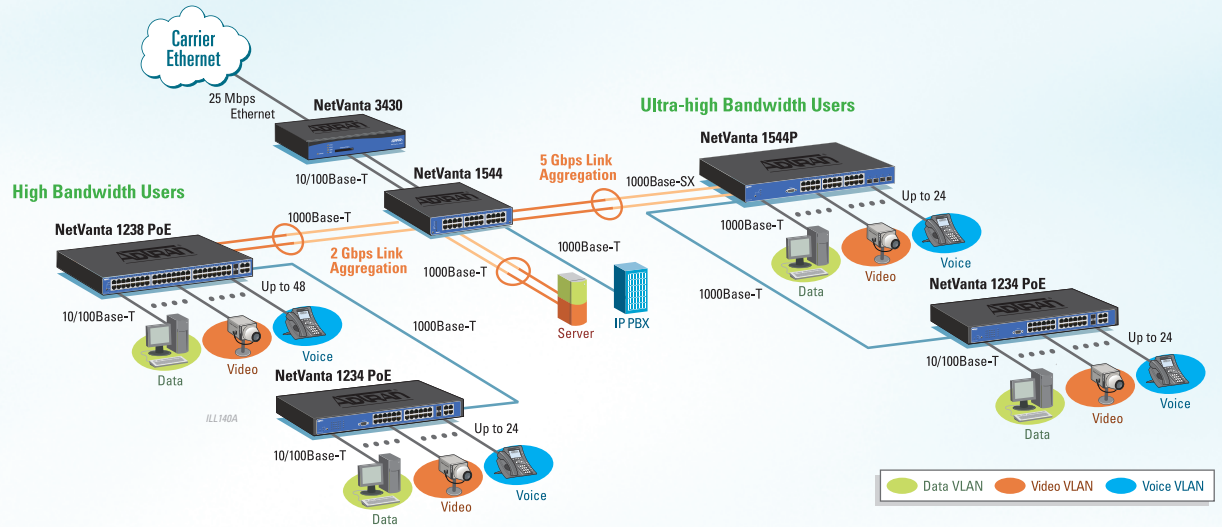


#### **NetVanta 1234 PoE**

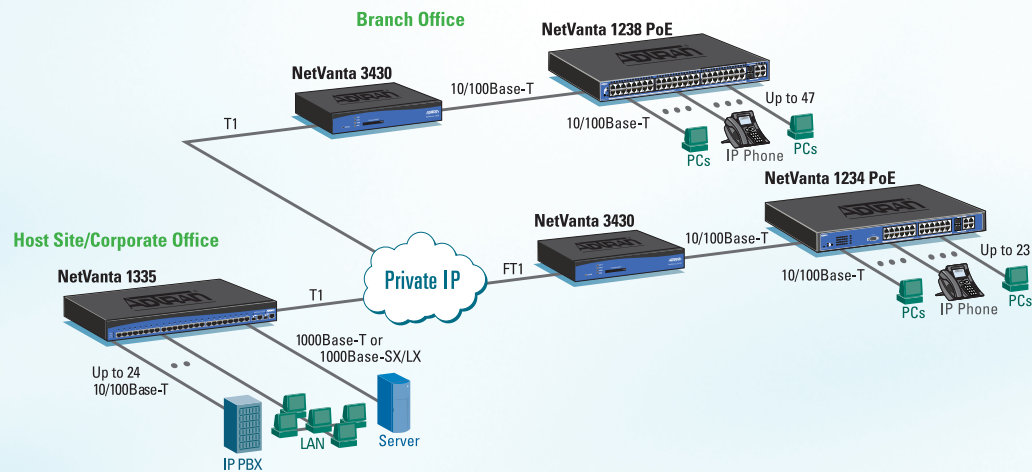
- 24-port, managed, Layer 2 Fast Ethernet switch
- 4 Gigabit ports for uplinks or stacking
- 2 SFP module slots for optical connections
- Non-blocking switching capacity up to 12.8 Gbps
- 802.3af and Legacy PoE
- 1U, 19-inch rackmount metal enclosure

## VLAN Switching and Inter-VLAN Routing

NetVanta switches provide managed switching features, like 802.1Q VLANs and VLAN trunking. VLANs provide logical segmentation of the network adding security and the separation of broadcast domains, which improves overall network performance. NetVanta switches can use the Gigabit Ethernet ports for uplink capability using 1000Base-T or optical connections using the Small Form factor Pluggable (SFP) modules for single- or multimode fiber applications. In addition, these Gigabit ports can be used for VLAN trunking to an upstream switch, link redundancy or to connect high-speed ports on servers or other devices.







### PoE and QoS for VoIP Networks

NetVanta Ethernet switches and multiservice routers provide PoE and QoS functionality for VoIP networks. QoS ensures network managers have the ability to prioritize delay-sensitive or mission-critical traffic and control network congestion. NetVanta 1200 Series Switches support Layer 2 802.1p CoS, and DiffServ while Weighted Round Robin (WRR) and Strict Priority Queuing are used for traffic prioritization. At Layer 3, NetVanta Multiservice Routers support bandwidth shaping, DiffServ marking and Class-based Weighted Fair or Low Latency Queuing.

# Converged services to the desktop at Gigabit speeds.

*The NetVanta Gigabit Series is part of a family of full-featured, managed, multi-layer, PoE, and Fiber Ethernet switches. This series of switches provides the ideal solution for use in campus applications, Gigabit-to-the-desktop, or as an aggregator switch.*

### Bandwidth Intensive Applications

The NetVanta Series of Gigabit Ethernet switches provides higher bandwidth to corporate and branch office LANs in support of today's most bandwidth intensive applications. These switches are perfect for new installations or network upgrades. The NetVanta 1638 family are managed, 48-port, Layer 3, GigE switches featuring 10 Gigabit uplink capability for the most bandwidth intensive applications. The NetVanta 1544 family are managed, 28-port, Layer 3, GigE switch designed as an access layer or network backbone switch for small to medium enterprises. All NetVanta Gigabit switches are ideal as aggregations

switches for high-bandwidth VoIP, Gigabit-to-the-Desktop deployments, and converged voice and data networks. NetVanta Power over Ethernet offers 802.3af, 802.3at and legacy PoE, while the NetVanta 1544F switch features SFP fiber ports.

### Aggregation Switching

With a flexible line of Gigabit NetVanta products, ADTRAN offers an all-ADTRAN solution for the small-to-medium enterprise network. The Layer 3 switching capability of these products offers wire-speed routing between VLANs allowing for fast transmission of IP traffic between access layer switches.

### Extending the Reach of the LAN

Fiber Optics extends the reach beyond the 100-meters limitation often associated with copper switchport interfaces. The NetVanta 1544F is an all-Fiber solution, extending the reach and offering redundancy, with virtual router redundancy protocol (VRRP) between buildings in campus environments or between wiring closets. The SFP ports support up to 2.5 Gbps per interface increasing throughput between NetVanta switches.



#### NetVanta 1638 and NetVanta 1638P

- 48-port, managed, Layer 3 GigE Switch
- Two high-speed interface slots provide up to four 10-Gigabit uplink ports
- 176 Gbps non-blocking switching capacity
- 1U, 19-inch rackmount metal enclosure
- 802.3af, 802.3at and Legacy PoE (NetVanta 1638P)



#### NetVanta 1544F

- 28-port, managed, Layer3 Fiber Optics Gigabit Ethernet switch
- 24 – 1 Gbps optical SFP module slots and 4 – 2.5 Gbps optical SFP module slots
- 68 Gbps non-blocking switching capacity
- 1U, 19-inch rackmount metal enclosure



**ADTRAN's NetVanta 1544 managed Gigabit switch offers PoE and 'green' technology to reduce costs.**



*ADTRAN NetVanta 1544 Named "2010 Internet Telephony Product of the Year" by TMC*



## NetVanta GigE Switch Solutions

- Full-featured, managed Layer 3, PoE, and Gigabit Ethernet switches
- Interoperable in established, multi-vendor networks
- Up to 176 Gbps switching capacity, non-blocking
- 10 Gigabit and Gigabit SFP/1000Base-T uplink capability
- Link Aggregation
- Desktop Security Audit, DOS, and DHCP Network Forensics
- MAC-based port security
- 802.1Q tagged and port-based VLANs
- LLDP/LLDP-MED for easy IP phone configuration
- Wi-Fi Access Controller for centralized management of NetVanta WAPs
- Cable and SFP diagnostics
- Port Scheduler for power saving and increased security
- Intuitive Web-based GUI
- Recognizable CLI
- Free firmware updates
- Limited lifetime warranty
- Next business day advance replacement



### NetVanta 1544 and NetVanta 1544P

- 28-port, managed, Layer 3 Gigabit Ethernet switch
- 24 – 1 Gbps copper and 4 – 2.5 Gbps SFP module slots for optical connections
- 68 Gbps non-blocking switching capacity
- 1U, half-width (NetVanta 1544)
- 1U, 19-inch rackmount metal enclosure (NetVanta 1544P)
- 802.3af, 802.3at and Legacy PoE (NetVanta 1544P)



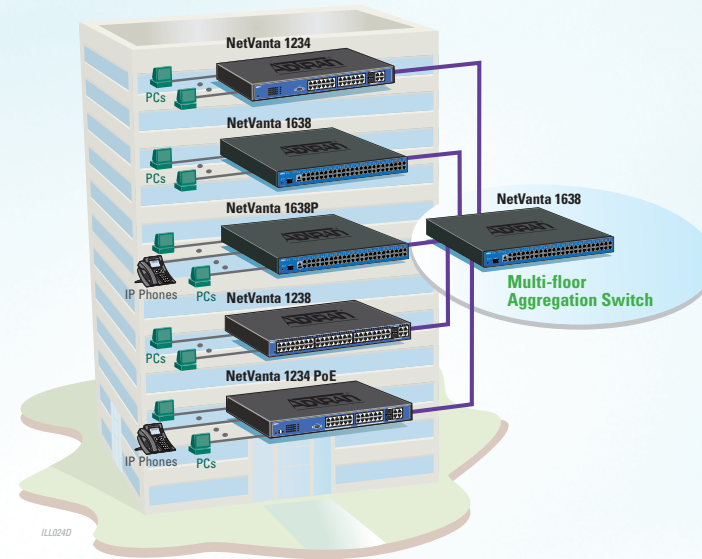
### NetVanta 1534 and NetVanta 1534P

- 28-port, managed, Layer 3 Lite Gigabit Ethernet switch
- 24 – 1 Gbps copper and 2 – 1 Gbps, 2-2.5 Gbps SFP module slots for optical connections
- 62 Gbps Non-blocking switching capacity
- 1U, half-width (NetVanta 1534)
- 1U, 19-inch rackmount metal enclosure (NetVanta 1534P)
- 802.3af, 802.3at and Legacy PoE (NetVanta 1534P)

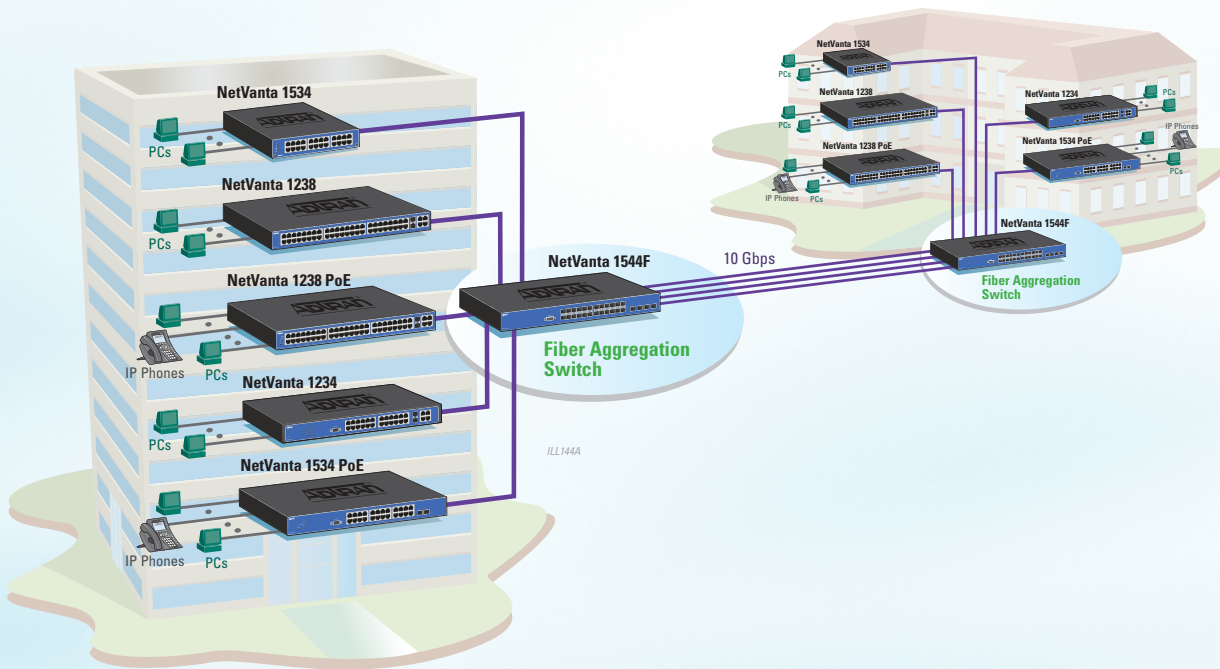
## Multi-floor Aggregation Switching

In this multi-floor configuration the ability to aggregate connections along with wire-speed switching for network traffic provides additional bandwidth for connectivity.

Uplink ports on NetVanta Series Switches provide a high-bandwidth connection to the NetVanta 1638. NetVanta switches support both copper-based 1000Base-T and fiber-based optical connections using the SFP modules supporting both single and multimode fiber applications. In addition, these Gigabit ports can be used for VLAN trunking to the NetVanta 1638 aggregation switch, for link redundancy, or for high-speed connections to servers or other devices.







### Fiber Optic Aggregation Switching

With the reach of Fiber Optics, distances beyond 100M are now supported for switch aggregation. This allows for direct connectivity between floors to a central switch as well as providing connectivity between buildings for campus network aggregation. The NetVanta 1544F offers flexible connectivity options supporting 10 Mbps to 1 Gbps of bandwidth on the 24 SFP slots. Four 2.5 Gbps SFP uplink ports may be used for link aggregation (up to 10 Gbps) between NetVanta 1544 units. This solution offers wire-speed switching performance with flexible connectivity options.

# Multiple networking functions—a single box solution.

*The NetVanta Series of Multiservice Routers provides affordable, all-in-one connectivity by offering a variety of networking functions wrapped into a single, compact device. These integrated, versatile platforms are capable of solving a multitude of switching challenges. These products are perfect for bandwidth-intensive applications like VoIP or for reliable, corporate LAN/WAN connectivity and Internet access.*

### The Power of Integration

With the integration of multiple networking functions, NetVanta all-in-one routing platforms perform services such as switching, IP routing, firewall, VPN, as well as Wi-Fi control in a single platform. These platforms are modular in nature and can accommodate a wealth of WAN interfaces depending on your connection needs. These integrated solutions simplify installation, configuration and troubleshooting, reducing the number of devices to be managed, all while eliminating excess cabling costs.

### The Speed of Layer 3 and the Integration of Wi-Fi

The NetVanta 1335 integrates a modular IP access router, 24-port PoE Layer 3 switch, firewall, VPN appliance, and wireless access control in an all-in-one compact platform. NetVanta 150 Wireless Access Points support rates up to 54 Mbps and offer a full suite of business-class security needs like WPA/WPA2, 802.1x user authentication, and VAPs, the equivalent of wireless, VLANs.

### Performance and Flexibility

The NetVanta 3448 is the perfect high-performance, versatile solution for smaller network switching needs. The NetVanta 3448 features a fully managed, non-blocking, eight-port PoE switch. It can power any 802.3af compliant PoE device, including IP Phones, WAPs, or security cameras. Compact and economical, it delivers high-performance throughput with ADTRAN's *RapidRoute™* technology for bandwidth-intensive applications.



#### NetVanta 3448 and 3448 PoE

- Multiservice router with integral 8-port, Layer 2 Ethernet switch
- CompactFlash slot for configuration files, auto provisioning, and firmware
- Native content filtering or Websense® integration
- VQM for MOS, jitter, delay and packet loss statistics
- 802.3af PoE switch (NetVanta 3448 PoE)

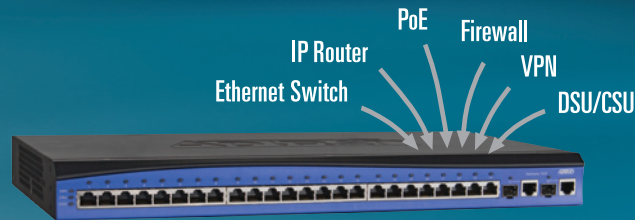


#### NetVanta 3458 and 3458 PoE

- Multiservice router supporting up to four T1s with integral 8-port, Layer 2 Ethernet switching
- CompactFlash slot for configuration files, auto provisioning, and firmware
- Native content filtering or Websense integration
- VQM for MOS, jitter, delay and packet loss statistics
- 802.3af PoE switch (NetVanta 3458 PoE)



**Significantly reduce your TCO with a single platform that accomplishes multiple networking functions. Multiservice access routers are affordable routing, switching, firewall, VPN, and Wi-Fi controller solutions for business-class networking needs.**



**Voice Quality Monitoring** reduces the time and pain of troubleshooting by monitoring trends within the network, including: MOS, jitter, delay, and packet loss.



#### **NetVanta 1335 and 1335 PoE**

- Multiservice router with integral 24-port, Layer 3 Ethernet switch
- Dual Gigabit/SFP module slots for uplink or stacking
- CompactFlash® slot for configuration files, auto provisioning, and firmware
- Cable diagnostics to identify an open or short per twisted pair
- VQM for MOS, jitter, delay and packet loss statistics
- 802.3af PoE switch (NetVanta 1335 PoE)



#### **NetVanta Multiservice Solutions**

- Modular all-in-one platforms supporting an Ethernet switch (Layer 2 or Layer 3), IP access router, PoE, firewall, and VPN in a single chassis
- Multiple models with 8-port or 24-port Ethernet switches
- Network options ranging from 56k to multi-T1, ADSL2+, and Ethernet
- Modular chassis supporting a variety of Network Interface Module (NIMs) and Dial Backup Interface Modules (DIMs)
- Integral stateful inspection firewall protects against DoS attempts
- VoIP-ready with QoS, CoS, and SIP ALG
- VQM for easy troubleshooting of VoIP traffic
- Wi-Fi access controller for centralized management of NetVanta WAPs
- Five-year U.S. warranty



#### **NetVanta 6355**

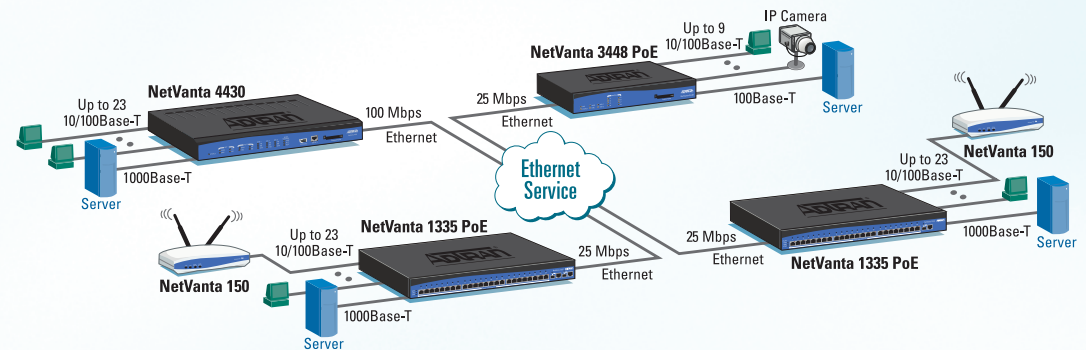
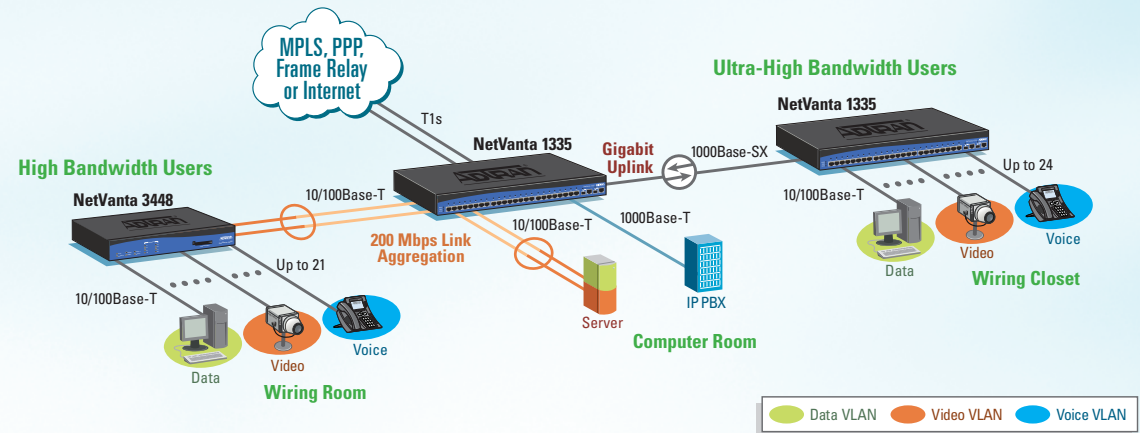
- IP Business Gateway with integral 24-port, Layer 2, PoE Ethernet switch
- Dual Gigabit/SFP module slots for uplink or stacking
- CompactFlash slot for configuration files and new firmware
- VQM for MOS, jitter, delay and packet loss statistics

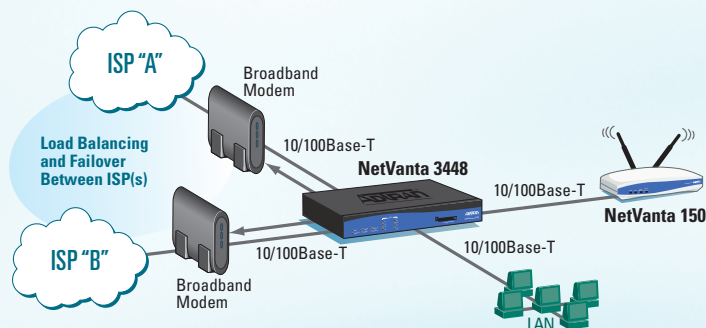
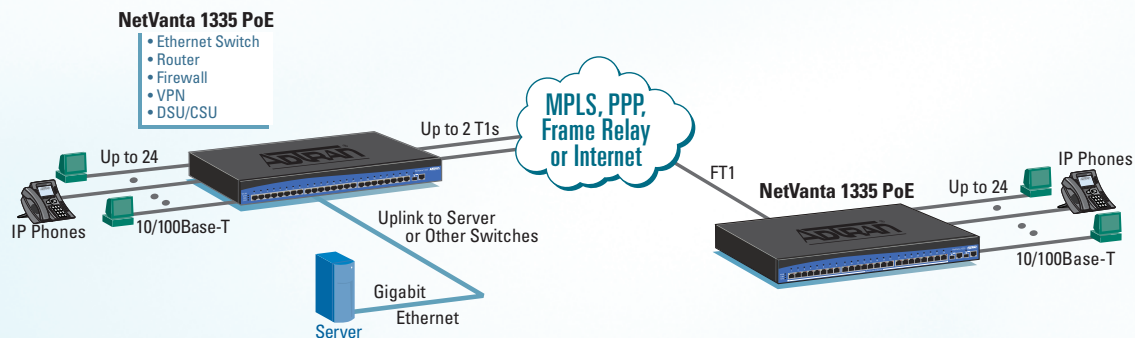
## VLAN and Layer 3 Switching

The NetVanta 1335 provides managed switching features, like VLAN trunking and GVRP, to ease the configuration of larger VLAN networks. Up to 24 Fast Ethernet ports may be configured for 802.1Q VLAN functionality to provide separation of broadcast domains and functional work areas, while Layer 3 switching capabilities are used for high-speed inter-VLAN switching. The 1000Base-T or fiber SFP Gigabit uplink ports can be used for VLAN trunking to another switch or for link redundancy.

## High-speed Ethernet Services

NetVanta multiservice solutions meet the demand for high-speed Ethernet service. The NetVanta 1335 allows Layer 3 switching to occur between sites and throughout the network. With additional PoE capabilities, NetVanta switch-routers can power various IP endpoints such as WAPs, surveillance cameras, and IP Phones.





## Integrated Switching and Routing

The ADTRAN NetVanta Series features unique all-in-one network access solutions that combine the functionality of a managed Ethernet switch and an access router into a single platform. The NetVanta 1335 Series offers 24 10/100Base-T Ethernet ports, an integral IP router, and 1000Base-T Gigabit port for high-speed uplink and stacking requirements. In addition, these products include a stateful inspection firewall, VPN, VQM, cable diagnostics, and backup capability, all in a single chassis. This single-platform LAN/WAN access solution reduces the number of devices and the costs associated with multi-platform solutions.

## Equal Cost Load Balancing and Failover

For the business that needs guaranteed bandwidth, the NetVanta Series can share bandwidth between two Internet Service Providers (ISPs), by using "equal cost" load balancing. This eliminates the need to purchase a rarely used, dormant, backup link as a dedicated disaster recovery scheme. Data is transported to either ISP until one of the connections is lost. Then, data is automatically re-routed over the failover link, until service is restored. This maximizes bandwidth, allows for full usage of prepaid circuits, and provides a high-speed disaster recovery scheme if needed.



# Answering the growing demand for secure access to sensitive corporate data.

*ADTRAN's NetVanta Series of Fixed-port Access Routers offers cost-effective IP switching and routing solutions for business-class broadband networks. Based on the widely deployed AOS, this family of products offers a robust feature set with standards-based functionality and addresses the growing need for secure access to corporate information resources over the Internet.*

### Guarantee Bandwidth with Disaster Recovery

The NetVanta 3100 Series provides an Ethernet or ADSL WAN interface, four-port fully-managed switch, and an analog port for disaster recovery or dial-in for remote management. These products are full-featured, low-cost solutions perfect for switching, secure Internet access, and high-speed corporate connectivity using broadband access such as DSL or cable.

### Higher Bandwidth

The NetVanta 3130 is a fixed-port, business-class ADSL router with an integrated Fast Ethernet four-port switch. It supports today's most advanced ADSL technology, ADSL2+, for applications taking advantage of its extending reach and higher bandwidth, up to 25 Mbps. The NetVanta 3130 is perfect for SMB applications. No matter if they are bundled with a carrier service or employee deployed, they deliver secure, high-speed corporate connectivity.

### Work Remotely, Work Securely

The NetVanta Series is designed for high-speed, cost-effective connectivity for remote offices, telecommuters and mobile users. All of these fixed-port routers support VPN and a firewall to ensure your remote employees can work without the security concerns normally associated with shared networks.



#### NetVanta 3130

- Fixed-port ADSL-to-Ethernet access router
- 1 ADSL/ADSL2/ADSL2+ WAN interface
- Full-featured, managed 4-port 10/100Base-T switch
- Analog interface for dial backup or remote management
- Wi-Fi access controller for centralized management of NetVanta WAPs



#### NetVanta 3120

- Fixed-port Ethernet-to-Ethernet access router
- 1 Ethernet WAN interface
- Full-featured, managed 4-port Ethernet switch
- Analog interface for dial backup or remote management
- Wi-Fi access controller for centralized management of NetVanta WAPs

# NetVanta Switch Product Comparison

<ul style="list-style-type: none"> <li>● Supported</li> <li>– Not Applicable or Unavailable</li> </ul>	Ethernet Switches					Multiservice Access Routers			Fixed-port Access Routers	
	NetVanta 1234	NetVanta 1238	NetVanta 1534	NetVanta 1544	NetVanta 1638	NetVanta 1335	NetVanta 3448	NetVanta 3458	NetVanta 3120	NetVanta 3130
<b>Ports and Slots</b>										
Modular NIM Slot(s)	–	–	–	–	–	1	1	2	–	–
ADSL Interface(s)	–	–	–	–	–	Optional	Optional	Optional	–	1
Onboard Ethernet Interface(s)	–	–	–	–	–	–	2	2	1	–
Fast Ethernet Switch Port(s)	24	48	–	–	–	24	8	8	4	4
1 Gbps Gigabit Ethernet Switch Ports	4	4	26	24	48	2	–	–	–	–
2.5 Gbps Gigabit Ethernet Switch Ports	–	–	2	4	–	–	–	–	–	–
High-speed Interface Slots	–	–	–	–	2	–	–	–	–	–
<b>Features and Capabilities</b>										
Stateful Inspection Firewall	–	–	–	–	–	●	●	●	●	●
Switching Capabilities	Layer 2	Layer 2	Layer 3 Lite	Layer 3	Layer 3	Layer 3 Lite	Layer 2	Layer 2	Layer 2	Layer 2
Port Scheduler	●	●	●	●	●	●	–	–	–	–
Cable/SFP Diagnostics	●	●	●	● <sup>1</sup>	● <sup>2</sup>	●	–	–	–	–
Quality of Service (QoS)	●	●	●	●	●	●	●	●	●	●
Class of Service (CoS)	●	●	●	●	●	●	●	●	●	●
Power over Ethernet (PoE)	Optional	Optional	Optional	Optional	Optional	Optional	Optional	Optional	–	–
802.1Q VLAN Support	●	●	●	●	●	●	●	●	●	●
802.1x Port Authentication	●	●	●	●	●	●	●	●	●	●
Microsoft Desktop Audit Desktop Audit	–	–	●	●	●	–	–	–	–	–
Network Forensics	–	–	●	●	●	–	–	–	–	–
Wireless Access Controller	●	●	●	●	●	●	●	●	●	●
IPSec VPN	–	–	–	–	–	●	●	●	●	●
Maximum VPN Tunnels	–	–	–	–	–	100	100	500	10	10
n-Command® Support	●	●	●	●	●	●	●	●	●	●
Warranty	Limited Lifetime	Limited Lifetime	Limited Lifetime	Limited Lifetime	Limited Lifetime	5-Year	5-Year	5-Year	5-Year	5-Year

<sup>1</sup> NetVanta 1544 and NetVanta 1544P

<sup>2</sup> Cable Only



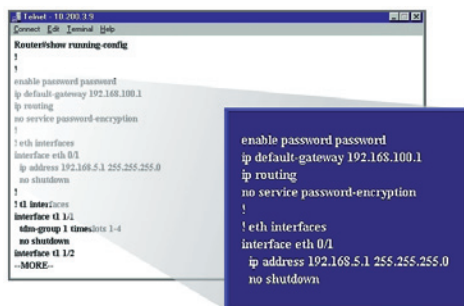
*“The NetVanta switch and multiservice access router products provided the functionality and reliability we needed at a value that could not be beat.”*

*Tom Perry,  
Information Systems Manager  
Huntsville/Madison County Airport Authority*

# A switching solution so remarkably versatile it makes your job easy.

## Multiple Management Options

The NetVanta Series is a standards-based solution that merges seamlessly into existing networks and is easy to configure and operate. The NetVanta CLI mimics the *de facto* industry standard, and is both familiar and easy to use. The CLI supports multiple configuration scripts to simplify setup of local and remote units. A Web-based GUI can be used to configure, troubleshoot, and view statistics about the AOS device.



The NetVanta Command Line Interface has a familiar look and feel, eliminating retraining costs.

## Quality of Service

As voice and data networks converge into a single communications network, QoS is of the utmost importance. NetVanta switches support 802.1p CoS and DiffServ standards, using WRR and Strict Priority queuing. Mission-critical traffic may be marked or prioritized over non mission-critical traffic on a switch-port basis in the NetVanta 1000 Series products. Each switch supports frame tagging, as well as enforcement of tagged traffic received from trusted sources. Four egress queues (per port) are available for assigning traffic priorities using WRR.

## The Port Scheduler

The Port Scheduler feature built into ADTRAN's switches helps conserve power and add security to today's networks. The Port Scheduler feature allows system administrators to configure ADTRAN switch products to automatically activate and deactivate switch ports based on time of day. A common application of the Port Scheduler feature enhances security by temporarily disabling the interface connected to a WAP to prevent network intrusion after business hours.

**The Port Scheduler** automatically activates and deactivates switch ports based on a defined schedule.



## Cable/SFP Diagnostics

The NetVanta Cable and SFP Diagnostics feature available in NetVanta Layer 3 and Layer 3 Lite Switches provides insight into Cable and SFP interfaces and lines when connected to ADTRAN NetVanta Ethernet Switches. This innovative feature allows the administrator of NetVanta switches to obtain real time information on physical cable characteristics.



**Cable Diagnostics** detects cabling problems like broken wires (an open) or touching wires (a short).





# Recognized and trusted: ADTRAN NetVanta solutions are the smart alternative for your network.

ADTRAN, Inc. is a leading global supplier of networking and communications equipment with an innovative portfolio of more than 1,700 solutions for use in the last mile of today's telecommunications networks. Widely deployed by carriers, distributed enterprises and SMB, ADTRAN solutions enable voice, data, video, and Internet communications across copper, fiber and wireless network infrastructures. Our solutions are currently in use by every major U.S. service provider and many global ones, as well as by thousands of public, private and governmental organizations worldwide.

## Technical Questions

800 615-1176

[www.adtran.com/support](http://www.adtran.com/support)

## Where To Buy

877 280-8416

[www.adtran.com/where2buy](http://www.adtran.com/where2buy)

## Training and Certification

[www.adtran.com/training](http://www.adtran.com/training)

## Simple, Reliable, and Affordable

When you need a networking solution that fits the unique connectivity requirements of your business, ADTRAN is the smart alternative. Our product portfolio offers a breadth of solutions, including a product suite that is tailored to the specific needs of SMB and distributed enterprise customers. With ADTRAN's award-winning and innovative NetVanta switches, routers, multiservice access routers, VPN solutions, wireless, and Unified Communications products, it is easy to find a quality solution that is perfect for your specific network needs.

NetVanta switch products are backed by an industry-leading warranty, best-in-class technical support from our team of degreed engineers, and is eligible for free firmware upgrades. As a TL 9000 3.0 and ISO 9001:2000 certified supplier supporting next-generation quality standards, the company maintains in-house labs for reliability, component and compliance testing — all with a focus toward customer satisfaction.

## High-touch Customer Support and Training

### ■ Customizable Installation and Maintenance Services Program.

The ADTRAN product warranty includes a return-to-factory repair and replacement program and free technical phone support. Technical support engineers are accessible for both pre- and post-sales support. ADTRAN Custom Extended Services (ACES) is also available for an extended guarantee and rapid response time. Priority access to technical support is guaranteed with a 30-minute call back and on-site product replacement in as few as four hours, depending on the service plan selected.

### ■ Comprehensive Training and Certification Services.

ADTRAN provides innovative training solutions designed with a focus toward varying skill levels and job functions. Professional certification programs are designed to help customers structure and individualize continuing education needs. Access to the certification and training programs includes both free and fee-based options. Sessions are available both on-and off-site, using Instructor-Led Training (ILT); Computer-Based Training (CBT); or virtual classroom training with real-time, Web-enabled classes.



Unified Communications  
Software and Appliances



IP Business Gateway for  
Trunking and Hosted VoIP  
NetVanta 6000 Series



Multiservice Access Router  
NetVanta 3448, 1335



IP Business Gateways for  
Business Trunking  
Total Access 900/900e Series



Modular Access Router  
NetVanta 3000, 4000, 5000



Fixed-port Access Router  
NetVanta 3100



Ethernet Switch  
NetVanta 1200s and 1500s



Wireless Access Point  
NetVanta 150



For the regional office nearest you,  
visit [www.adtran.com/regional](http://www.adtran.com/regional)

#### ADTRAN, Inc.

Attn: Enterprise Networks  
901 Explorer Boulevard  
Huntsville, AL 35806

P.O. Box 140000  
Huntsville, AL 35814-4000

256 963-8000  
256 963-8699 fax

#### General Information

800 9ADTRAN  
[info@adtran.com](mailto:info@adtran.com)  
[www.adtran.com](http://www.adtran.com)

#### Pre-Sales Technical Support

800 615-1176  
[application.engineer@adtran.com](mailto:application.engineer@adtran.com)  
[www.adtran.com/support](http://www.adtran.com/support)

#### Where To Buy

877 280-8416  
[channel.sales@adtran.com](mailto:channel.sales@adtran.com)  
[www.adtran.com/where2buy](http://www.adtran.com/where2buy)

#### ACES Installation & Maintenance Services

888 874-ACES  
[aces@adtran.com](mailto:aces@adtran.com)  
[www.adtran.com/support](http://www.adtran.com/support)

#### Training

800 615-1176  
256 963-6700 fax  
[training@adtran.com](mailto:training@adtran.com)  
[www.adtran.com/university](http://www.adtran.com/university)



ADTRAN is an ISO 9001, ISO 14001,  
and a TL 9000 certified supplier.

EN1025G April 2011  
Copyright © 2011 ADTRAN, Inc.  
All rights reserved.

ADTRAN believes the information in this publication to be accurate as of publication date, and is not responsible for error. Specifications subject to change without notice. ADTRAN and NetVanta are registered trademarks of ADTRAN, Inc. and its affiliates in various countries. All other trademarks mentioned in this document are the

property of their respective owners. ADTRAN five-year warranties apply only to products sold in North America. Global limited lifetime warranties are available for select NetVanta products. For complete warranty information and a list of countries participating in the global warranty, visit [www.adtran.com/warranty](http://www.adtran.com/warranty)

ADTRAN products may be subject to U.S. export controls and other trade restrictions. Any export, re-export, or transfer of the products contrary to law is prohibited. For more information regarding ADTRAN's export license, please visit [www.adtran.com/exportlicense](http://www.adtran.com/exportlicense)



**888.792.7463**  
**WWW.TARGETD.COM**