

Empowered by Innovation

**NEC**

# The SL1100

Smart Communications for Small Business



# Why choose the SL1100?

In today's highly competitive business environment, effective and reliable communications are critical to a company's success. Therefore, it is important that you invest in a unified communications solution that allows you to take advantage of the latest productivity-enhancing IP applications that can deliver increased performance throughout your organization – that solution is NEC's SL1100 Communications System.

This unique platform is the ideal solution for any small business. The SL1100 makes your team more reachable, responsive and productive.

## Value for Money

- Powerful communications with a small business price tag
- Only pay for what you need, with an entirely scalable solution
- Lower operational costs considerably by making smarter use of your communications
- A range of remote/home office options to help lower brick and mortar costs

## Easy to use

- Intuitive features that the whole team can use, without the need for training
- Desktop phones, wireless handsets and applications include shortcuts that speed up working processes
- Time-saving applications empower your team to become more productive

## Keep them connected

- Use your mobile phone to stay connected through your office number, from anywhere
- DECT wireless communications maximizes reachability from anywhere on the premises
- Built-in conferencing for business meetings reduces travel costs
- Never miss important messages with enhanced voicemail to keep you up to date

## The SL1100 Advantage

- **IP Technology**
  - IP Networking
  - IP Trunks (SIP)
  - IP Telephones
  - IP Softphone
- **Mobility Options**
  - SMB Wireless (ML440)
  - Digital DECT Wireless Handsets
  - Mobile Extension
- **Voicemail**
  - Email Notification
- **Automatic Call Distribution (ACD)**
- **SL Desktop Suite (Unified Communications)**
  - Desktop Call Control
  - Microsoft® Office Outlook® Integration
    - o Dial Out/End Call, Transfer and Conference from Contact
  - Company Directory Access
  - Personal Contact Lists
  - Softphone
- **Network Remote Office Locations**
  - Share Voicemail, Transfer Calls and make Intercom Calls
- **Selection of IP and Digital Telephones**

## Work Smarter – SL Desktop Suite

Intuitive applications to increase efficiency and productivity

NEC's SL Desktop Suite delivers to you an integrated unified communications (UC) solution that enhances your organization's productivity and collaboration. This productivity-boosting solution offers you key functions that deliver excellent business benefits.

## Manage Communications from Your Desktop PC

The SL Desktop Suite's Desktop Client is an intuitive application providing full call control from your PC screen. With just a few clicks of your mouse, you can click-to-dial, manage calls and lookup contacts. For Microsoft® Office Outlook® users, it easily integrates with your Outlook contacts, providing click-to-dial functionality within emails for further time-saving benefits.

## Support for Remote and Mobile Workers

The SL Desktop Suite's Softphone is a portable telephony application, offering you system phone functionality from your laptop, from wherever you are; ideal for remote and mobile workers. With the Softphone, your workers will have the communications tools they need to work efficiently and productively, whether they're in the office or on the road.

## Stay connected while on the move

Remain reachable on the same number from wherever you are

With Mobile Extension, you can take your office number with you when you're on the road. It provides you access to system features such as caller ID, call transfer and voicemail and it really is like being in the office, whether you're traveling or sitting in traffic.

- Company specialists can now be empowered to maintain high service standards when out of the office since they remain reachable from any location.
- Salespeople can use Mobile Extension to ensure that even when they're on the road, they never miss a call which could lead to a lucrative business opportunity.

- With DECT handsets for wireless voice communications, you can keep in-touch with customers and colleagues from any in-building location.

**TARGET**  
DISTRIBUTING

**800.873.5528**  
**WWW.TARGETD.COM**



## uMobility™ Wi-Fi Client

Extend the capabilities of your smartphones

The SL1100 uMobility Wi-Fi Client functions as a Standard SIP station on Blackberry®, iPhone® and Android™ smartphones. The uMobility Wi-Fi Client allows you to:

- Answer incoming calls to your office telephone directly from your smartphone.
- Make calls from your smartphone using your office's telephone system. Your office caller ID is displayed to the caller - masking your personal cell phone number.
- Talk on your smartphone utilizing a Wi-Fi hotspot at the office, at home or even at a public hotspot – and not use any of your cellular minutes.
- Easily Hold and Transfer calls to other stations within your office's telephone system.
- Access your work Voicemail directly from your smartphone.



**Note** – VPN access is required for remote connections to the SL1100. (If being accessed over the Internet)

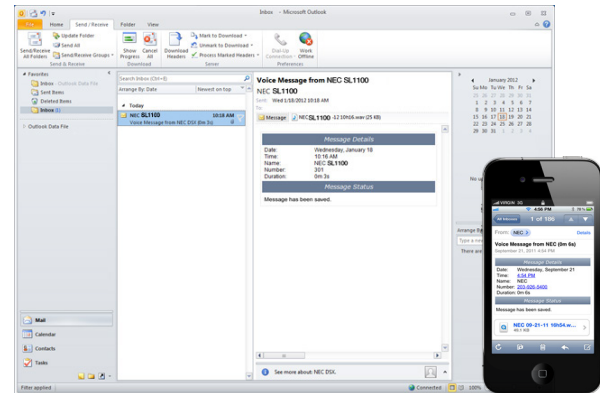
## More than voicemail

Advanced features for enhanced communications

InMail is more than just a regular voicemail box. Packed with powerful business features, this is a solution to make keeping up to date easier than ever. It offers Message Notification to your desktop phone, home office or mobile phone to allow you to monitor your mailbox effortlessly from wherever you are. You can even choose to receive email notifications with the message included as an audio attachment.

No matter what you're up to, you can have the right recorded message to match. With three personalized greetings, you can select the one most appropriate depending on your availability or the time of day.

Additionally, the Call Record feature enables you to keep track of important discussions. Recordings can be emailed to colleagues and stored for quick reference at a later time.



**With the InMail advanced features license, get your voicemail messages delivered immediately to your email inbox.**

## Networking

Extend the reach of your communications

With the SL1100's networking capabilities, you can extend the reach of your communications to remote offices and mobile workers and ensure that your business can collaborate effectively. You can eliminate duplication and improve efficiencies by transparently sharing a single voicemail and intercom system. It also enables you to share trunks and transfer calls easily.

### System to System Networking Across WAN



## SL1100 Station Equipment



### SL1100 Digital Telephones

Offers 12 or 24 programmable keys with LEDs, full duplex speakerphone, dual-color call indicator lamp and an energy-saving sleep mode – available in black or white



### SL1100 IP Telephones

Offers 24 programmable keys with LEDs, backlit keypad and display, full duplex speakerphone, dual-color call indicator lamp and remote/home office functionality – available in black or white - shown with optional charcoal designation sheet



### SL1100 Designation Sheets

Provides a choice between the standard silver designation sheet or the optional charcoal one.



### SMB Wireless (ML440) IP DECT Multiline Handsets

Offers true on-site mobility with 4 programmable keys, 3 dedicated soft keys (Hold/Transfer/ Conf.), brilliant color display with graphical user interface, wideband two-way speakerphone, caller ID and a silent vibrator mode



### Digital DECT Handsets

Provides 2 line/24 character backlit display with feature icons, backlit keypad, 8 programmable keys with LEDs, headset port and selectable ring tones



### DSS Console

Provides 60 programmable keys with LEDs and is ideal for receptionists

## SL1100 Feature List

- Abbreviated Dialing/Speed Dial
- Account Code Forced/Verified/Unverified
- Account Code Entry
- Alarm
- Alarm Reports
- Alphanumeric Display
- Analog Communications Interface (ACI)
- Ancillary Device Connection
- Answer Hold/Automatic Hold
- Attendant Call Queuing
- Automatic Call Distribution (ACD)
- Automatic Release
- Automatic Route Selection (ARS/F-Route)
- Background Music
- Barge-In
- Battery Backup - System Memory
- Battery Backup - System Power
- Built-in Automated Attendant
- Call Accounting (Communications Analyst)
- Call Arrival (CAR) Keys
- Call Duration Timer
- Call Forwarding
- Call Forwarding with Follow Me
- Call Forwarding, Off-Premise
- Call Forwarding/Do Not Disturb Override
- Call Monitoring
- Call Redirect
- Call Waiting/Camp-On
- Callback
- Caller ID Call Return
- Caller ID
- Caller ID - Flexible Ringing
- Caller ID - Shared Logging
- Central Office Calls, Answering
- Central Office Calls, Placing
- Class of Service
- Clock/Calendar Display/Time and Date
- Code Restriction/Toll Restriction
- Code Restriction Override/Toll Restriction Override
- Code Restriction, Dial Block/Toll Restriction, Dial Block
- Conference
- Conference, Remote
- Conference, Voice Call/Privacy Release
- Continued Dialing
- Data Line Security
- Delayed Ringing
- Department Calling
- Department Step Calling
- Dial Pad Confirmation Tone
- Dial Tone Detection
- Dialing Number Preview
- Digital Call Logging (recording)
- Digital Trunk Clocking
- Direct Inward Dialing (DID)
- Direct Inward Line (DIL)
- Direct Inward System Access (DISA)
- Direct Station Selection (DSS) Console
- Directed Call Pickup
- Directory Dialing
- Distinctive Ringing, Tones and Flash Patterns
- Do Not Disturb (DND)
- Door Box
- Drop Key
- Ecologically Sound Power Saving Mode
- E911 Compatibility
- Flash
- Flexible System Numbering
- Flexible Timeouts
- Forced Trunk Disconnect
- Group Call Pickup
- Group Listen
- Handset Mute/Handset Cutoff
- Hands-free and Monitor
- Hands-free Answerback/Forced Intercom Ringing
- Headset Operation
- Hold
- Hotel/Motel
- Hotel/Motel - Do Not Disturb
- Hotel/Motel - DSS Console Monitoring
- Hotel/Motel - Message Waiting
- Hotel/Motel - Room Status
- Hotel/Motel - Room Status Printout
- Hotel/Motel - Room-to-Room Call Restriction
- Hotel/Motel - Single Digit Dialing
- Hotel/Motel - Toll Restriction (When Checked In)
- Hotel/Motel - Wake Up Call
- Hot Key-Pad
- Hotline
- Howler Tone Service
- Illuminated Dial Pad
- InMail-Automatic Access to VM by Caller ID
- InMail-Cascade Message Notification
- InMail-Email Notification
- InMail-Find-Me Follow-Me
- InMail - Language Setting
- InMail Park and Page
- InMail Upload Download Audio
- Intercom
- Intercom SMDR
- IP Multiline Station (SIP)
- IP Single Line Telephone (SIP)
- IP Trunk - (SIP)
- ISDN Compatibility (PRI)
- Last Number Redial
- Licensing
- Line Preference
- Long Conversation Cutoff
- Loop Keys
- Maintenance
- Meet Me Conference
- Meet Me Paging
- Meet Me Paging Transfer
- Memo Dial
- Message Waiting
- Microphone Cutoff
- Mobile Extension
- Mobile Extension - Callback to Mobile Phone
- Multiple Trunk Types
- Music on Hold
- Name Storing
- Navigation Key
- Night Service
- Off-Hook Signaling
- One-Touch Calling
- Operator
- Paging, External

- Paging, External (VRS)
- Paging, Internal
- Park
- PBX Compatibility/Behind PBX
- PC Programming
- Power Failure Transfer
- Prime Line Selection
- PRI Compatibility
- Prime Line Selection
- Private Line
- Programmable Function Keys
- Programming from a Multiline Terminal
- Pulse to Tone Conversion
- Redial Function
- Remote (System) Upgrade
- Repeat Redial
- Reverse Voice Over
- Ring Groups
- Ring-down Extension (Hotline), Internal/External
- RoHS Compliant
- Room Monitor
- Save Number Dialed
- Secondary Incoming Extension
- Secretary Call (Buzzer)
- Secretary Call Pickup
- Security
- Selectable Display Messaging
- Selectable Ring Tones
- Serial Call
- Single Line Telephones
- SL Desktop Suite
- SL Net (Networking)
- Softkeys
- Station Hunt
- Station Message Detail Recording
- Station Name Assignment - User Programmable
- Station Relocation
- T1 Trunking (with ANI/DNIS Compatibility)
- Tandem Ringing
- Tandem Trunking (Unsupervised Conference)
- TAPI Compatibility
- Tone Override
- Traffic Reports
- Transfer
- Trunk Group Routing
- Trunk Groups
- Trunk Queuing/Camp-On
- uMobility (Wi-Fi Client)
- Unicast/Multicast Paging Mode
- Uniform Call Distribution (UCD)
- User Programming Ability
- Virtual Extensions
- Voice Mail Integration (Analog)
- Voice Mail Message Indication on Line Keys
- Voice Over
- Voice Response System (VRS)
- Voice Response System (VRS) Upload Download Audio
- Voice Response System (VRS) - Call Forwarding - Park and Page
- Volume Controls
- Warning Tone for Long Conversation

Note: Some features may be optional or available at a future date.

Capacities – Quantity of SL1100 Cabinets			1	2	3	4
Total Ports			160	196	196	196
	Trunk Ports	Combined Maximum	68	84	84	84
		Analog Trunks	12	24	36	48
		PRI/T1 Channels	24	48	48	48
		IP Trunks (SIP/H.323)	32	32	32	32
	Extension Ports	Combined Maximum	92	112	112	112
		Digital Telephones	24	48	72	96
		Analog Telephones	20	40	60	80
		IP Telephones (SIP-MLT/Std.)	64	64	64	64
		DSS Consoles	12	12	12	12
		Door Boxes	2	4	6	6

Capacities listed are system maximums and may be limited by system configuration.



For further information please contact your local NEC representative or:

**North America (USA & Canada)**

NEC Corporation of America

[NECSL1100.com](http://NECSL1100.com)

**About NEC Corporation of America** Headquartered in Irving, Texas, NEC Corporation of America is a leading provider of innovative IT, network and communications products and solutions for service carriers, Fortune 1000 and SMB businesses across multiple vertical industries, including Healthcare, Government, Education and Hospitality. NEC Corporation of America delivers one of the industry's broadest portfolios of technology solutions and professional services, including unified communications, wireless, voice and data, managed services, server and storage infrastructure, optical network systems, microwave radio communications and biometric security. NEC Corporation of America is a wholly-owned subsidiary of NEC Corporation, a global technology leader with operations in 30 countries and more than \$38.5 billion in revenues. For more information, please visit [necam.com](http://necam.com).

SW11056 | v.8.07.13

© 2013 NEC Corporation. All rights reserved. NEC, NEC logo, and UNIVERGE are trademarks or registered trademarks of NEC Corporation that may be registered in Japan and other jurisdictions. All trademarks identified with ® or ™ are registered trademarks or trademarks respectively. Models may vary for each country. Please refer to your local NEC representatives for further details.