

APC Smart-UPS C™

Efficient, true sine-wave power protection for entry-level servers and network equipment.



Brings the reliability of the world's most popular network and server UPS to entry level applications.

The most affordable true sine-wave UPS's in the Smart-UPS family. Designed for entry level servers, it is compatible with today's active power factor corrected (PFC) power supplies. Included PowerChute Business Edition software is compatible with all major server operating systems and provides UPS management and safe system shutdown.

- **Reliable**
- **Economical**
- **Efficient**
- **Manageable**



APC Smart-UPS C

Application optimized models ideal for entry-level servers, point of sale and other small network devices.

Tower and Rackmount 1000 and 1500VA



Standard features:

1

LCD Display

Intuitive interface provides comprehensive status information at a glance.

High Efficiency Green Mode

Saves utility costs and reduces heat promoting longer component life.

Pure Sine-Wave Output

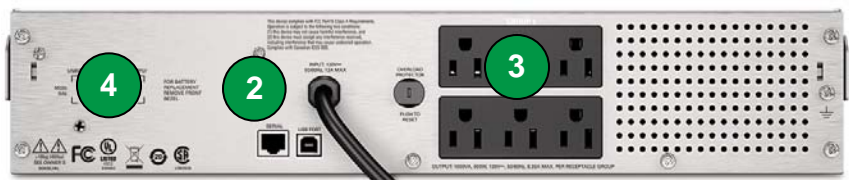
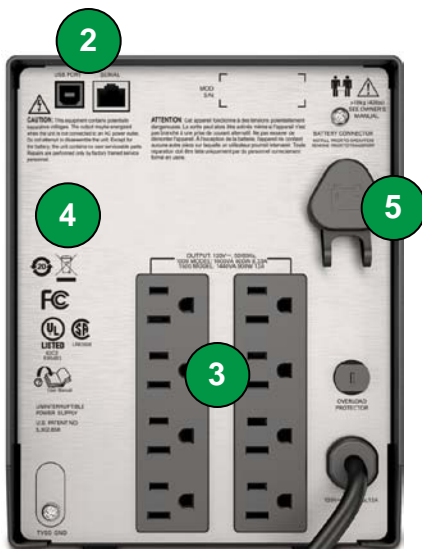
Simulates the utility when on battery for optimum device compatibility.

Network Grade Power Conditioning

Automated voltage regulation (Boost AVR), noise filtering and surge protection.

Advanced battery management

Temperature compensated charging extends life of internal batteries.



2

Communication Ports

USB and serial ports for UPS management.

3

Generous number of outlets

All receptacles are surge and UPS output protected.

4

Safety-agency approved

Ensures the product has been tested and approved to national standards.

5

Battery disconnect

Convenient way to disconnect battery for transport (tower models).

APC Smart-UPS™ C Display

Comprehensive LCD interface for status at a glance.

Interface on all SMC models.

**1****LCD Display Screen**

Comprehensive status at a glance

Status Conditions

- On line
- On battery
- Green mode
- Load graph
- Battery charge graph
- Audible Alarm

Measures

- Input & Output Voltage
- Load viewable in Watts, VA or %
- Output current and frequency
- Event counter
- Estimated on battery runtime

2**On Line/On Battery**

LED illuminates Green when UPS in on utility power, or will illuminate Orange when providing battery power.

3**On/Off button****4****System Fault LED**

Illuminates in the event of a system fault and displays error message.

5**Mute Button**

Used to silent the alarms

6**Display Button**

Steps through each measurement screen and provides the ability choose the default view.

Tower models



Product feature	SMC1000	SMC1500
Output		
Power Capacity	600W/1000VA	900W/1440VA
Nominal Output Voltage	120V	
Output Frequency	47-63Hz	
Wave Form Type	Sine wave	
Output Connections	(8) NEMA 5-15R	
Input		
Nominal Input Voltage	120V	
Input Voltage Range for main operations (Max adjustable range)	93-130V (85-136V)	
Input Frequency	50/60 Hz +/-3 Hz (auto sensing)	
Input Connection	NEMA 5-15P, 6ft cord	
Batteries and Runtime		
Battery Type	Maintenance-free sealed lead-acid battery with suspended electrolyte, leak proof	
Typical Backup Time at 1/2 Load (min)	14 min	11 min
Typical Backup Time at full Load (min)	5.min	4 min
Replacement Battery	APCRBC142	RBC6
Communication and Management		
Interface Ports	USB and Serial (RJ45)	
Control Panel and audible alarms	Etched glass LCD display with LED status indicators; alarm on battery, distinctive low battery alarm	
Surge Protection and Filtering		
Surge Energy Rating	455J	
Filtering	Full time multi-pole noise filtering: 0.3% IEEE surge let-through, zero clamping response time, meets UL1449	
Physical		
Maximum Height (in)	8.62 in	8.62 in
Maximum Width (in)	6.73 in	6.73 in
Maximum Depth (in)	17.28 in	17.28 in
Net Weight	38 lbs	45 lbs
Conformance		
Regulatory	UL 1778, CSA, FCC Part 15 Class A, NOM	
Warranty and Equipment Protection Policy	2 years repair or replace and \$150,000 lifetime EPP	

Rackmount models



Product feature	SMC1000-2U	SMC1500-2U
Output		
Power Capacity	600W/1000VA	900W/1440VA
Nominal Output Voltage	120V	
Output Frequency	47-63Hz	
Wave Form Type	Sine wave	
Output Connections	(6) NEMA 5-15R	
Input		
Nominal Input Voltage	120V	
Input Voltage Range for main operations (Max adjustable range)	93-130V (85-136V)	
Input Frequency	50/60 Hz +/-3 Hz (auto sensing)	
Input Connection	NEMA 5-15P, 8ft cord	
Batteries and Runtime		
Battery Type	Maintenance-free sealed lead-acid battery with suspended electrolyte, leak proof	
Typical Backup Time at 1/2 Load (min)	14 min	18 min
Typical Backup Time at full Load (min)	5 min	6 min
Replacement Battery	APCRBC124	APCRBC132
Communication and Management		
Interface Ports	USB, Serial (RJ45)	
Control Panel and audible alarms	Etched glass LCD display with LED status indicators; alarm on battery, distinctive low battery alarm	
Surge Protection and Filtering		
Surge Energy Rating	455J	455 J
Filtering	Full time multi-pole noise filtering: 0.3% IEEE surge let-through, zero clamping response time, meets UL1449	
Physical		
Maximum Height (in)	3.5 in	3.5 in
Maximum Width (in)	17.0 in	17.0 in
Maximum Depth (in)	16.0 in	18.7 in
Net Weight	45.15 lbs	61.2 lbs
Conformance		
Regulatory	UL 1778, CSA, FCC Part 15 Class A, NOM	
Warranty and Equipment Protection Policy	2 years repair or replace, and \$150,000 lifetime EPP	

