

PROFESSIONAL MEDIA



HDM-63VG

Professional Grade MiniDV

New from Sony is the HDM63VG, also called 63VG, Mini DV/HDV tape! This professional grade mini dv tape offers high quality, reliable recording at a reasonable price. VG stands for "Videographer Grade." The VG tape is recommended for use with Sony Professional HDV camcorders and performs better than competitors in the DV/HDV category.

Length is 63 minutes.



Pro Hi 8MM Metal Particle

Sony HMPX features high-power magnetic particles packed at high density with special particle alignment in a new dropout-resistant binder. Durable construction and strict quality control results in a product which will stand up to the rigors of editing while maintaining low dropouts, even after multiple passes in still and shuttle modes.

- P6-30HMPX**
- P6-60HMPX**
- P6-120HMPX**



MiniDV

Metal evaporated technology provides higher output and higher carrier-to-noise ratio for Sony Mini DV Tape. Sony Metal Evaporated Magnetic Layers have twice the remnant magnetic flux density of Metal Particle (MP) coatings, for higher performance, while the DLC (Diamond-Like Carbon) protective layer improves durability. Most are suitable for Mini DV / DVC and HD Video Recording.



Cleaning Cassettes

Keep video and audio heads clean and help prevent head and tape scratches.

- | | |
|------------------|------------------------|
| BCTD12CL | For |
| BCTHD12CL | Betacam |
| PDVM12CL | Digital Betacam |
| DT10CLD | DVCAM-Small |
| DVM12CLD | DAT |
| | Mini DV |



Ruggedized Portable Hard Drives

These new portable hard disc drives are designed by Sony for professionals needing high capacity storage to back up and safely store or transport data. These external hard drives have a shock-resistant cover and a reinforced protective case that reduces the chance for damage. They have one USB 3.0 and two FireWire 800 ports.

- PSZHA25 256GB**
- PSZHA50 500GB**
- PSZHA1T 1TB**



AIT 8mm Data Cartridges

Sony AIT (Advanced Intelligent Tape) format is intelligently engineered to stand apart - no other tape cartridge features both an MIC chip (the brains) and a pure metal magnetic layer designed for maximum capacity and longevity (the brawn).

Capacity

- SDX135C 35 GB w MIC**
- SDX250C 50 GB w MIC**
- SDX3100C 100 GB w MIC**
- SDX4200C 200 GB w MIC**
- SDX5400C 400 GB w MIC**

Also available in WORM versions.



AIT Turbo 8mm Data Cartridges

Sony is pleased to offer a new AIT family, AIT Turbo, enhancing both capacity and speed of earlier AIT generations delivering the same highly reliable and industry leading 8mm AIT format and technology. AIT Turbo series offers capacities from 20GB to 80GB native and 52GB to 208GB compressed for effective cost performance.

- TAITE20N 20GB**
- TAIT140N 40GB***
- TAIT280N 80GB***

*Also available in "C" versions, which have a 64Kbit chip



Digital Tape Format (DTF)

The second generation of DTF format has been developed for a wide variety of back-up and archiving applications. The Telefile feature accelerates access to the contents and enhances cartridge reliability. With high capacity and low error rates, DTF is a natural archiving solution for a broad range of commercial and professional applications.

- GW260GS 60GB (Small Shell)**
- GW2200GL 200GB (Large Shell)**



Micro Vault N-Series USB Flash Drives

- USB 2.0
- Stylish design with retractable USB type A connector
- Simple plug, drag & drop functionality
- Compatible with Windows and Mac OS
- Available in 4, 8, 16 and 32GB sizes



Secure Digital (SD) Memory Cards

Featuring exceptional data speeds and unparalleled reliability, Sony SD cards help you capture high-resolution photos and HD videos with their industry-leading flash memory technology. Sony memory cards come in a range of capacities, offering ample space for storing photos, video, and other data on cameras, camcorders, and other SD-enabled devices.

- Sizes - 8GB, 16GB, 32GB & 64GB**
- Speeds - Class 4, 10 & UHS-I**



Blu-ray Disc

- BNR25RH 25GB**
- BNR50RH 50 GB**
- Speed: 2x • Dual Layer
- Write Once • Jewel Case
- BNE25RH 25GB**
- BNE50RH 50 GB**
- Speed: 2x • Dual Layer
- Rewritable • Jewel Case



Data Media Cleaning Cassettes

Keep heads clean and help prevent data loss due to dirty heads and drive mechanisms.

- | | |
|------------------|-------------------|
| QGDC11 | For |
| LTXCLWNV | D8 Mammoth |
| GW90CL | LTO |
| SDX1CLWWW | DTF |
| SDX4CLWWW | AIT |
| SDX5CL | AIT |



HDCAM

- Digital videocassettes ideal for HDTV applications including ENG/EFP
- Fine Ceramic Armor Metal Particles
- Superior durability
- Superior storage stability suitable for long-term storage



XDCAM

- Rewritable 12cm diameter optical disc
- 23.3GB Capacity/Single Layer available
- 50GB Capacity/Dual Layer available
- Highly durable and reliable media
- Dust and shock resistant cartridge
- Estimated life of at least 50 years



LTO Data Media

- Up to 6.25TB capacity
 - Transfer rates up to 280MB/sec
 - Patented Ceramic Armour Particle Tape
 - 1,000,000 Tape Passes
 - For Data Storage and Archive
- Call For Complete Size Listing**



Multi-Interface Hard Disk Drives

- Supports USB 3.0, eSATA and Firewire 400/800
- Available in 1TB, 2TB and 3TB
- Rotational speed 7200 RPM
- Durable Aluminum Housing
- Mac and PC compatible



D5 Digital

- Compatible with all television standards
- Superior magnetic qualities
- Uniform Filler Dispersion technology enables the tape to continually clean the head surface without excessive wear



iVDR VC102 Video Capture Device

- Lightweight, portable, rugged tapeless video capture device optimized for direct recording from virtually any FireWire enabled DV video camera
- Supports DV, DVCAM, DVCPRO, DVCPRO 50, DVCPRO HD & HDV



DV Pro Master

- Compact digital videocassettes using ME tape technology
- Enhanced reliability
- Lower error rate than Mini DV
- Ideal for repetitive high-speed playback, editing and rewinding



DVC Pro HD

- Used with HDTV ENG/EFP Equipment
- 126 Minutes of Recording Time
- High Precision Cassette Shell
- Fine Ceramic Armor Metal Particles
- Compatible with DVCPRO HD-LP (EX) mode



Pro Plus SDHC Memory Cards

- SDHC-16GB**
- SDHC-32GB**
- Full Class 10
- Ultra High Speed UHS-I Memory Cards
- Read Speeds Up to 95MB/s and write speeds up to 45MB/s



CD-R 100-Pack

- Inkjet printable disc
 - 80 minutes of audio /700MB of data
- ### DVD-R 100-Pack
- Inkjet printable disc
 - 2 hours of DVD quality video recording/4.7GB of data storage



CD and DVD Storage

- Available in paper sleeves, standard size jewel boxes and slim-line jewel boxes
- Clear and colors
- In multiple quantity packages – call for entire list of available sizes/colors



Blu-ray™ Discs

- Maxell BD-R Blu ray discs offer the speed and capacity to record high definition digital content
- Write once Single Sided Disc
- 25 GB Capacity

- USB 360 Flash Drives**
- USB 360-2GB**
- USB 360-4GB**
- USB 360-8GB**
- USB 360-16GB**
- USB 360-32GB**



- 360° Rotating cover, never lose the cap again
- Easy plug and play
- Easy to use password protection

- USB Onyx Flash Drives**
- Onyx-4GB**
- Onyx-8GB**
- Onyx-16GB**



- Less than a half inch in width
- Available in sizes up to 16GB capacity for your storage needs
- Average storage capacities – 16GB = 533k documents, 5,600 photos, 32 hrs of video, 4,000 songs



Alkaline Batteries

- Available in AA, AAA, 9V, C and D
- Available in 2, 4, 10, 20 and 48-packs
- Keep your battery powered portable devices up and running with powerful and affordable Maxell Alkaline batteries



SP Betacam

- Metal tape format ideal for broadcast and master tape applications
- Exceptional durability
- Outstanding image and audio fidelity
- High precision cassette mechanism
- Hard case provides effective protection



DP121 DVCPRO

- Ultra-Fine, High-Energy Metal Magnetic Particles
- High-Molecular Binder Improves Magnetic Layer Durability
- Superior Transport Stability

DP121-12M DP121-34L
 DP121-24M DP121-66L
 DP121-33M DP121-94L
 DP121-66M DP121-126L



LTO

Ultrium 1, 2, 3, 4, 5 and 6

- High Capacity and Transfer Rates
- Capacity: 100GB up to 6.25TB
- High Transfer Speeds
- Enhanced Durability
- Encrypted for Security
- Made Possible by Fujifilm NANOCUBIC Technology

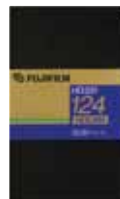
HDCAM

HD331 is the ideal solution for the camera operator looking for the ultimate in High-Definition videotape performance.

Important Features:

- Stable Tape Transport and High Durability
- Proprietary Super Calendering Technology
- Archival Quality Storage Characteristics
- Dust-Resistant Cassettes and Cases

HD331-6S HD331-12S
 HD331-32S HD331-40S
 HD331-64L HD331-94L HD331-124L



XDCam

- Pre-formatted for immediate use
- Superior dust- and scratch-resistance
- Excellent performance with a wide range of hardware
- Outstanding durability
- Superior long-term storage characteristics

PD711-23SL 23GB Single Layer
 PD711-50DL 50GB Dual Layer



D5001 D-5

- An Ideal Choice for Uncompressed Digital
- Superior Durability and Stability
- Excellent Long-Term Storage
- High-Rigidity Precision Cassette Shells

D5001 S23 D5001 M33
 D5001 M12 D5001 M33
 D5001 M48 D5001 M63
 D5001 L94 D5001 L124



Pro DV171HD

- Outstanding durability
- High output recording
- Low head wear
- Multiple recording modes

DV171HD-33S DV171HD-48S
 DV171HD-63S DV171HD-64L
 DV171HD-96L DV171HD-124L
 DV171HD-186L DV171HD-276L



P2 Memory Cards F-Series

This latest generation of P2 memory cards offers the same quality performance but at a lower cost. When recorded once daily at 100% capacity, the E-Series cards are reusable for up to five years; when used at 50% capacity, the cards are reusable for ten years or more.

P2-16GBF 16GB of Storage
 P2-32GBF 32GB of Storage
 P2-64GBF 64GB of Storage



MPEG IMX

- High C/N Ratio
- New Base Film & Binder Material
- Outstanding Long-Term Storage Characteristics

MX321-6S MX321-12S
 MX321-22S MX321-32S
 MX321-60S MX321-64L
 MX321-94L MX321-124L
 MX321-184L



D321 Digital Betacam

- High Output and Low Error Rate
- Superior Durability and Stability
- Superior Storage Characteristics

D321-D6 D321-D12
 D321-D22 D321-D32
 D321-40S D321-D64L
 D321-94L D321-124L



DVD+-R

- Available in 50- or 100-pack spindle with white printable surface
- 4.7 GB/120 minute capacity
- Compatible with most current DVD players and DVD-ROM Drives
- High performance, durability and long archival life



CD-R

- Available in 50- or 100-pack spindle with white printable surface
- For One-Off Personal Use Recordings of Original Compact Discs
- Ideal for Creating Custom Music CDs
- For all PCs using CD-R formats
- Holds 80 Minutes worth of music
- Holds 700 MB worth of data



Blu-ray™ Discs

Protect valuable video & data with Fujifilm BD-R Blu-ray Disc Recordable Media.

- Storage capacity: 25GB
- Media format: BD-R
- Burn speed: 4x (max)
- Backs up video, audio and other data
- Jewel cases included



GET IT ALL ON THE WEB!

VISIT OUR GREAT PRO MEDIA WEB SITE

<http://avmediastore.targetd.com/>

For all of your media needs. We're a full line distributor for the best brands in the industry:

- Sony Professional Media
- Fuji Professional Media
- Maxell Professional Media
- Media Storage Solutions • Data Media Products
- AV Hardware from the Best Brands
- Best Selection, Service and Prices

ONE CLICK GETS YOU THERE!



FUJI IS AVAILABLE ON GSA CONTRACT GS14F0185D

TOLL FREE – 800-873-5528 • LOCAL – 301-296-9400 • FAX – 301-296-9494



Imation LTO

With Imation Ultrium LTO Tape Cartridges, you're assured of the reliability and support that comes from the industry's most trusted media supplier. Imation Ultrium Tape cartridges give you data protection unlike any other LTO cartridge.

Call For Complete Listing



Quantum LTO

- High Storage Capacity – Up to 2500GB native and up to 6250GB compressed
- Up to 30-Year Archival Life
- WORM (Write Once, Read Many) – Addresses today's tough regulatory and compliance needs

Call For Complete Listing



IBM LTO

By combining high storage capacity, performance, and reliability, IBM LTO Ultrium Data Cartridges continue the IBM commitment to enhancing tape technology. IBM LTO Ultrium Data Cartridges provide superior media quality and reliability for organizations around the world.

Call For Complete Listing



LaCie External Hard Disk Drives

- Mac and PC compatible
- Choose from USB, Firewire and Thunderbolt interfaces
- RAID configurations available
- Sizes up to 6TB available in standalone HDD

Call For Complete Listing



Hard Disk Drives

G-Technology by Hitachi offers premium external storage solutions, ranging from portable to desktop and now wireless! With our ever-expanding offerings, you choose which storage solution is best for you – whether you're connecting via USB, FireWire, eSATA, mini-SAS, or wirelessly! Mac & PC compatible.

Call Today For Available Configurations



Hard Disk Drives by Other World Computing

Other World Computing (OWC) has been providing quality hardware products and support to the computer industry since 1988 and features one of the largest online catalogs of computer, iPod®, iPhone®, and iPad® enhancement products

Call Today For Available Configurations



P2 Memory

Panasonic's A Series P2 card is a PCMCIA compatible plug-in card based on ultra-reliable, solid-state memory, integrating four high-performance SD cards like those now used in digital still cameras, and packaged in a rugged, die-cast frame that weighs only 45 grams. This card has 4X the capacity and 4X the transfer speed of a single SD card.



Call Today For Available Configurations



MiniDV

After 25 years of extensive research, Panasonic has developed a new evaporation technology named S-AME(Super Advanced Metal Evaporation). With the new process, it is now possible to improve magnetic density over 400%. Panasonic PQ minidv tape is the choice for professional videographers.



- AY-DVM63PQUS** **AY-DVM83PQUS**
- HDVM63MQ** **AY-HDVM63AMQ**



SDHC Memory Cards

- Speeds up to 95 MB/s • Available up to 64GB
- Great for HD video and continuous burst shooting

Compact Flash Cards

- Professional-grade CompactFlash cards

Call For Complete Listing of All Sizes



SDHC Memory Cards & Thumb Drives

- Speeds up to 95 MB/s • Available up to 64GB
- Extremely reliable and durable
- Thumb drives available in USB 2.0 and 3.0

Call For Complete Listing of All Sizes



Primera AutoPrinter Ribbons

Get the most out of your Primera AutoPrinter with genuine replacement ribbons to keep production running without a hitch. **Call For Complete Listing**

DISC PACKAGING



Disc Packaging

Choose CD, DVD and Blu-ray packaging that protects your product and differentiates it from the competition. Quality packaging options are available to fit any concept and any budget. Choose from a variety of options. Standard and slim CD cases and DVD cases for one, two or multiple discs. Clamshell poly cases to match your needs.

Call For Complete Listing

B125-150

HDMI over Dual Cat5 Extender

- Supports computer video resolutions up to 1920 x 1200, and HD resolutions up to 1080p (24Hz)
- Extends a 1080p (24Hz) or 1080i (60Hz) signal up to 150 ft. using Cat5e/6 cabling • Extends a 3D signal up to 100 ft. using 24Awg, Solid Wire Cat5e/6 cabling



B203-101

USB 2.0 Over Cat5 Extender Kit

- Locate a Hi-Speed USB 2.0 device up to 330 ft. from your computer
- Uses readily available Cat5/Cat6 cable
- Supports Hi-Speed data transfer rates up to 480Mbps
- Compatible with Windows XP and later; not Mac compatible



B130-101A-2 VGA + Audio over Cat5 Extender Kit

- Extends a 1920 x 1440 (60Hz) Video and Stereo Audio signal up to 500 ft., or a 1024 x 768 (60Hz) Video and Stereo Audio signal up to 1,000 ft., when using 24Awg, Solid Wire Cat5e/6 cable
- The remote (Receiver) unit features built-in Equalization and Gain controls to adjust the video image



B126-2X2

HDMI over Cat5 / Cat6 2X2 Matrix Switch

- Extend HDMI up to 175ft (1080i)
- Share multiple HDMI sources between multiple monitors
- Allows any input to be routed to any output; or the same input to be routed to multiple outputs • HDCP compatible
- Switch input sources via Push-button, Remote, or RS232 serial
- Mounting hardware included



SVGA/VGA Monitor + Audio Cable with Coax (HD15 M/M, 3.5mm M/M)

- Extend both Video and Audio signals
- Superior molded cables with foil-shielding for maximum EMI/RFI protection
- CMR PVC rated
- 3.5mm Stereo Plugs



P504-025 25-Foot
P504-050 50-Foot

SVGA/VGA Monitor Gold Cable with RGB Coax (HD15 M/M)

- Superior molded cables with foil-shielding for maximum EMI/RFI protection
- Gold plated connectors and gold plated copper contacts
- Resolutions up to 2048 x 1536



P502-025 25-Foot
P502-050 50-Foot

P314-012 12-ft. Audio Y Splitter Adapter (3.5mm Male/2 RCA Male)

- Audio Cable Y Adapter 3.5mm-M/(2)RCA-M - 12'
- Connect a device with a 3.5mm jack to a sound system with RCA inputs
- Perfect for your PC, notebook, MP3 player or iPod®
- Molded cable with built-in strain relief



HDMI Cables High Speed with Ethernet

- Version 1.4a • Supports 3D
- Supports 4K
- Supports Internet capable HDTVs
- Audio return channels
- Also available in Plenum

HDMI-XF

- 50, 75 and 100-foot lengths require NO booster
- X = 3, 6, 9, 15, 25, 50, 75, 100 feet

Other lengths also available by Special Order. Call for details.



SVGAMM-X VGA Cable

- 2-Ferrites to protect against unwanted EMI/RFI interference.
- Supports: VGA, SVGA, XGA, XGA+, SXGA, SXGA+ and UXGA resolutions
- X = 15, 25, 50 feet



Other lengths also available by Special Order

RCA-AV-X-P AV Cable

- L + R Audio
- Red, white and yellow leads



X = 6, 12, 50 feet

Other lengths also available by Special Order

Mini to Mini (3.5mm)

3.5MM-6FT
6 Foot Cable

3.5MM-6FBULK
50-Pack of
6 Foot Cables

RCA to RCA Monaural

RCA-V-X-P
X = 3, 6, 50, 75 feet



442320-B500 Shielded Plenum Speaker Wire

- 500-foot pull box
- 18 gauge/2-conductor • White



SW18500 Speaker Wire

- 2-conductor
- Clear jacket
- 18 gauge, 2-conductor
- 500-foot coil



17-1809 3.5mm to RCA

- 6-foot length
- 3.5mm male to 2 RCA male (L & R)



TARGET HAS THE BEST SELECTION, SERVICE AND PRICES

TOLL FREE – 800-873-5528 • LOCAL – 301-296-9400 • FAX – 301-296-9494



SmartMountLT Articulating Mounts

The SmartMountLT™ series articulating wall mounts give the ultimate in display positioning, with one-person, Hook-and-Hang™ easy installation.

- SAL724** For 10" to 29" Displays
- SAL737** For 22" to 40" Displays
- SAL746** For 22" to 50" Displays



SmartMountLT Tilt Mounts

The SmartMountLT™ series tilting wall mounts offer both easy installation and versatile display adjustment. One-person, Hook-and-Hang™ easy installation.

- STL624** For 10" to 29" Displays
- STL637** For 22" to 40" Displays
- STL646** For 32" to 50" Displays
- STL670** For 39" to 75" Displays



SmartMountLT Fixed Mounts

The low-profile design of the SmartMountLT™ series wall mounts provide a sleek finish that is perfect for today's ultra-slim displays. One-person, Hook-and-Hang™ easy installation.

- SFL624** For 10" to 29" Displays
- SFL637** For 22" to 40" Displays
- SFL646** For 32" to 50" Displays
- SFL670** For 39" to 75" Displays



Corner Mounts

The industry's first and only mount designed for direct corner mounting - - only from Peerless-AV! Out of the way, but still in clear view.

- CM50** For 32" to 50" Displays
- CM60** For 40" to 60" Displays
- CM850** For 32" to 60" Displays



Video Wall

Creating a 2x2 video wall is simple and cost effective with the Peerless video wall kit. The single wall frame design is quickly installed and then you're ready to start hanging displays.

- DS-VW646-2X2** For 40" to 46" Flat Panel Displays
- DS-VW660-2X2** For 47" to 60" Flat Panel Displays



DS-VWC560 Portable Video Wall Cart 2x2 or 2x1 Configurations for 40" to 60" Displays

The Peerless-AV® DS-VWC560 Portable Video Wall Cart provides tool-less micro adjustment for precise display alignment along with the strength to hold up to 4 displays measuring 40"-60". (Displays not included).



DS-VWS546-2X2 Floor Stand Video Wall Mount For 40" to 46" Displays

The single frame design easily clamps to the stand uprights making it ideal for Rental and Staging applications. The universal adaptors accommodate displays measuring 40"-46" and place displays on the same vertical plane.



In Wall

Install flat against the wall with Peerless-AV In-Wall Articulating Arm. Installation is quick and easy thanks to the mount's stud-locating tabs that fit the in-wall box snugly between 16" wood stud centers.

- IM746P** For 22"-47" Displays
- IM760P** For 32"-71" Displays (Requires adapter)

MOD-FCSKIT300 Modular Series Floor-to-Ceiling Kit For 32" to 60" Displays

The MOD-FCSKIT300 Floor-to-Ceiling Kit includes all of the components required to mount a single 32" - 60" flat panel display between the floor and ceiling.



Flat Panel Floor Cart

Designed to provide the ideal display viewing position.

Internal cable management hides the AV cabling, showing a clean, clutter-free look.

- SC590** For up to 90" displays
- SC560FK** For up to 65" Displays
- SC550GL** For 32" to 47" Displays



PRGS-UNV Precision Gear Projector Mount Kit For Multimedia Projectors

- Two adjustment knobs control tilt and roll image alignment
- Horizontal wrench access slots
- Cable Management routing
- Quick release mechanism
- Includes Spider® universal adapter
- Maximum load = 50 lb

PPA Ceiling/Wall Projector Mount with Adjustable Extension For Multimedia Projectors up to 50 lb

This versatile, ready to install mount model offers the convenience of installation to the ceiling or the wall and provide drop length options without the need of additional accessories.



The Suspended Ceiling Plate for Jumbo Mounts consists of a 24"(610mm) x 24"(610mm) ceiling tray suspended by four tie wires from the true ceiling above. A fifth "safety cable" is also provided.

- CMJ450** Replaces 2'x2' ceiling tile
- CMJ453** Replaces 2'x2' ceiling tile
- CMJ455** Replaces 2'x2' ceiling tile (Lightweight. Brackets not included)



Short Throw Mounts

The Peerless-AV® Short Throw Projector Mounts provide installation flexibility for single stud or double stud applications. The universal telescoping arm is easily adjustable to accommodate various short throw projector distance requirements

- PSTA-028** For up to 50 lbs.
- PSTA-1200** For up to 25 lbs.
- PSTA-1600** For up to 25 lbs.
- PSTA-600** For up to 25 lbs.

Healthcare EMR Hybrid Cart

EMR Hybrid Cart is a TAA-compliant cart optimized for use with traditional notebook PCs or thin tablets. The fan cooled notebook tray is easily positioned on the extension arm to provide ideal placement. Includes keyboard and mouse tray.

- HCC101** Optimized for Notebooks
- HCC201** Optimized for Tablets, with battery for up to 24 hrs. usage





Sony KDL-40W600B
40" LED HDTV

- Full HD 1080p
- 4 HDMI inputs
- USB Input
- Motionflow™ XR 240
- Stream HD entertainment wirelessly with built-in Wi-Fi®
- Also available in 48-inch and 60-inch



Sony KDL-55W800B
55" LED 3D HDTV

- Full HD 1080p • X-Reality™ PRO
- Loud, clear surround sound
- 4 HDMI inputs • USB Input
- Motionflow™ XR 480
- Stream HD entertainment wirelessly with built-in Wi-Fi® • Includes 3D glasses
- Also available in 50-inch



Sony KDL-70W850B
70" LED 3D HDTV

- Full HD 1080p • X-Reality™ PRO
- Loud, clear surround sound
- 4 HDMI inputs • USB Input
- Motionflow™ XR 480
- Stream HD entertainment wirelessly with built-in Wi-Fi® • Includes 3D glasses
- Also available in 60-inch



Sony KDL-65W950B
65" LED 3D HDTV

- Full HD 1080p • X-Reality™ PRO
- Loud, clear surround sound
- 4 HDMI inputs • USB Input
- Motionflow™ XR 480
- Stream HD entertainment wirelessly with built-in Wi-Fi® • Includes 3D glasses
- Also available in 55-inch



Sony XBR-70X850B XBR 70" 4K Ultra HD 3D Internet TV

- 4K 3840 x 2160 Resolution • Active 3D with 4 Pairs of Glasses
- Smart TV with Opera Web Browser • Built-in 802.11b/g/n Wi-Fi
- Motionflow XR 960 Technology • Sony TRILUMINOS Display Technology
- Smartphone and Tablet Control • SimulView 2-player Gaming
- Latest HDMI support for next gen 4K players and services
- Also available in 49, 55 and 65-inch



Sony XBR-79X900B XBR 79" 4K Ultra HD 3D Internet TV

- 2D/3D 4K 3840 x 2160 Ultra HD Resolution
- Dynamic Edge LED Backlight Technology • Motionflow XR 960 Technology
- Built-in Wi-Fi & Multiple HDMI Inputs • Access to Sony Entertainment Network
- 4K X-Reality Pro Chip with 4K Upscaling • MHL, Miracast & NFC Wireless Mirroring
- TRILUMINOS Color-Enhancing Display • SimulView Gaming Mode for PlayStation3
- S-Force Front Surround 3D Technology • Also available in 55 and 65-inch



Sony BDP-S6200
4K Wi-Fi and 3D Blu-ray Disc Player

- Full HD 1080p Playback via HDMI
- 4K Upscaling
- 3D Playback and 2D to 3D Conversion
- Wi-Fi & Ethernet Network Connectivity
- Miracast Mobile Device Mirroring
- Access to Sony Entertainment Network
- Dolby TrueHD & DTS-HD Master Audio
- Dual-Core Processor • Dual USB Ports



STR-DA1800ES
Home Theater 7.1 Wi-Fi A/V Receiver

- 100 Watts per channel
- 7.2-Channel • 4K Pass-Through
- Built-In Wi-Fi • AirPlay Technology
- Built-In Bluetooth
- iPod / iPhone Music & Video Playback
- 8 HD Inputs
- Sound Optimizer
- Control with iPhone or Android Devices



Sony LLS-201
Personal Content Station

- Wirelessly store, view and share photos and videos
- Enhanced Software Support
- 1TB Internal Storage Capacity
- IEEE 802.11a/b/g/n Wi-Fi Compatibility
- Dual Band 2.4 GHz / 5 GHz
- HDMI Output Up to 1080/60p



Sony EVI-HD3V PTZ Camera

- 1/3" HD CMOS
- 2.0MP/720/60p NTSC and 720/50p PAL Formats
- 10x Optical, 4x Digital Zoom
- Wide Pan and Tilt Range
- DVI-I Video Output
- Direct Drive Motor for Silent Operation
- RS-232C Protocol



Sony EVI-HD7V PTZ Camera
1080p Pan/Tilt/Zoom Camera

- 10x Optical Zoom
- Wide Angle of View (70 degrees)
- High Speed P/T
- 6 Presets
- RS-232C • DVI-I
- Wide-range, Quiet and Quick Pan/Tilt Mechanism



Sony VPL-SW536CM
WXGA Ultra Short Throw Projector with Built-In Interactivity and Dual Pen Input

- Brightness of 3100 Lumens
- Ultra Short Throw Projection
- WXGA (1280 x 800) Resolution
- 2500:1 Contrast Ratio
- 6000 Hours Expected Lamp Life
- Optical Zoom 1.05x
- HDMI x 1 / RGB Inputs x 2
- Built-IN Ethernet LAN



Sony NEX-EA50UH
Camcorder with 18-200mm Servo Zoom Lens

- Records Full HD 1080p up to 60 fps
- Exmor APS-C CMOS Sensor
- Lossless Digital Zoom Effect
- Accepts E-mount Lenses
- SD/MS Memory Card Slot
- Still Photographs at 16 Megapixels

Sony ICD-SX733D
Digital Voice Recorder with Dragon® Software

- 4GB Internal Flash Memory
- microSD Expansion Slot
- Dragon Naturally Speaking Software
- 3-Element Internal Mic
- Dual A/D Converters
- Auto & Manual Record Level Modes
- Key Control & Voice Up Functions
- Built-In Rechargeable Battery



IF SONY MAKES IT WE CAN GET IT FOR YOU

TOLL FREE – 800-873-5528 • LOCAL – 301-296-9400 • FAX – 301-296-9494

SHARP



Full HD
1080

Sharp LC70LE650U 70-Inch LED HDTV

- Full HD 1920 x 1080p
- Edge-Lit LED Backlight Technology
- Built-in Wi-Fi & Integrated Web Browser
- USB Media Player & Four HDMI Inputs
- Native 120 Hz Panel Refresh Rate

SAMSUNG



Full HD
1080

Samsung UN75F6300AF 75-Inch LED HDTV

- Smart Hub interface organizes content into 5 convenient panels
- Web Browser • Clear Motion Rate 240
- Full HD 1080p • Built-in WiFi
- 4 HDMI Connections

TOSHIBA



Full HD
1080

Toshiba 58LI350U 58-Inch LED HDTV

- CS240Hz ClearScan
- 1080p FullHD • LED TV • HDMI x3
- Dynamic Picture Mode
- Audyssey EQ, ABX
- ColorMaster™ • Cinema Mode

Panasonic



Full HD
1080

Panasonic TC-L47ET5 47-Inch 3D LED HDTV

- 1080p • 4xHDMI • Wi-Fi
- Web Browser
- VIERA Internet Apps • IPS Alpha
- DLNA Compatible
- With 4 pairs of 3D Glasses

LG



Full HD
1080

LG 39LN549E 39-Inch Digital Signage LED HDTV

- 1920 x 1080 HD Resolution
- Built-In Signage Function
- Built-In TV Tuner
- Exports via USB Flash Drive
- Optional WiFi Dongle for Export

NEC



Full HD
1080

NEC E424 42-Inch Digital Signage LED HDTV

- Multiple HDMI ports • RS-232C
- USB media player
- Full 1080p high-definition resolution
- Built-in NTSC / ATSC analog / digital tuner • Built-in 10W speakers

SunBriteTV



Full HD
1080

Sunbrite SB-5515HD-BL 55-Inch Outdoor LED HDTV

- 1920 x 1080p full-HD resolution
- Specifically designed and engineered to resist rain, dust, insects, humidity, and salt air, extreme heat and cold.
- Powder-coated aluminum

PROSCAN



ProScan PLDEDED2435A 24-Inch LED HDTV

- Integrated ATSC TV tuner
- Dynamic contrast ratio (5000:1)
- One HDMI input
- VGA port for connection to PC
- 5 milliseconds response time

acer



Acer S1210 Short Throw 1080p Projector

- 1024 x 768 resolution
- DLP® 3D Ready
- 4000:1 contrast ratio
- 2500 lumens brightness
- Composite video • S-video
- VGA • mini-USB

BenQ



BenQ HW523 WXGA DLP 3D Ready Digital Projector

- WXGA 1280 x 800 Native Resolution
- Brightness of 3000 ANSI Lumens
- Sharp 13,000:1 Contrast Ratio
- Long Lamp Life up to 10,000 Hours
- Supports 3D Blu-Ray Ready Projection
- Flexible Connectivity Including HDMI

Optoma



Optoma TW631-3D 3D Multimedia Projector

- 3500 ANSI Lumens
- WXGA (1280 x 800)
- 7W Speaker Output
- PC and Mac Compatible
- RJ-45 x 1 • HDMI x 1
- Closed Captioning • 3D Compatibility

InFocus



InFocus IN3126 3D Ready Digital Projector

- WXGA 1280 x 800 Resolution
- 4000 Lumens • 3000:1 Contrast Ratio
- HDMI, VGA and USB Connectivity
- Standard Mode Lamp Life 2000 Hours
- Integrated 20W Stereo Speakers
- 30-300" Diagonal Projection Size

EPSON



Epson PowerLite 1960 Multimedia Projector

- 5000 Lumens
- XGA (1024 x 768) Resolution
- Digital Display Port & HDMI Connectivity • Split Screen
- 10W Speaker Output
- Horizontal Keystone Slider Tool
- 1.6x Optical Zoom

Panasonic



Panasonic PT-DW740US 1-Chip DLP Projector with Lens

- Brightness of 7,000 Lumens
- 2,500:1 Contrast Ratio
- WXGA (1280 x 800) Resolution
- Advanced Image Processing Features
- System Integration Flexibility
- Easy Maintenance & Superior Reliability

DRAPER



Draper 101060 Motorized Front Projection Screen

- Wall/Ceiling Mounted
- Tab-Tensioned • 106" Diagonal
- HDTV Format • 16:9 Aspect Ratio
- M1300 Screen Finish

DA-LITE



Da-Lite 20923 Motorized Front Projection Screen

- 16:10 Format • 123" Diagonal
- 1.5" Wide Beveled Aluminum Frame
- Uses Snaps to adhere Projection screen material • Easy Mounting

MISCELLANEOUS AV HARDWARE

AUDIO • VIDEO

InFocus

InFocus INLITESHOW III Wireless Presentation Adapter



- Turns any display with a VGA input into a wireless and/or networked display
- On-board video decoding for fast, smooth playback • Mac/PC compatible
- 802.11n for fast data transmission
- Connect and display multiple computers
- Creates a secure wireless network AP

Panasonic



Panasonic AG-AC130APJ AVCCAM HD Handheld Camcorder

- 1/3" 2.2 MP 3MOS Sensor
- Integrated 22x Lens / 28-616mm Equiv.
- 3.45" 1920 x 480 LCD
- 1080i60 / p30 / p24 / 720p60 Formats
- Dual SD / SDHC / SDXC Card Slots
- 2-Channel XLR Inputs

Panasonic



Panasonic AG-HPX250PJ P2 HD Handheld Camcorder

- 1/3"-Type 2.2 Mp 3MOS Imager
- Integrated 22x (28-616mm Equiv) Lens
- 10-Bit AVC-Intra Recording at 100 Mb/s
- DVCPRO HD & SD Recording
- Variable Frame Rates & 24p Modes
- 3.45" 1920 x 480 LCD Monitor
- Dual P2 Memory Card Slots

Panasonic



Panasonic AJ-HPM200 P2 Mobile Portable Recorder

- AVC-Intra • 5 P2 Bays
- GigaBit Ethernet • Non-Linear GUI
- Optional AV HD Cross-Conversion
- RS-422A Remote
- SD/SDHC Memory Card Slot
- FireWire Digital Interface

SAMSUNG



Samsung BD-F5900 Smart 3D Blu-ray Disc Player with Built-in Wi-Fi

- Plays 2D or 3D Blu-ray Discs, DVDs & CDs
- Built-in Wi-Fi for Internet Connectivity
- Access a Variety of Entertainment Apps
- Full Web Browser & Quick Start Mode
- HDMI Connectivity & Anynet+

Panasonic



Panasonic DMP-BDT330 Smart Network 3D Blu-Ray Disc Player

- Full HD 1080p 2D & 3D Playback via HDMI
- Built-in Wi-Fi & Ethernet Connectivity
- 4K Upconversion & 2D-3D Conversion
- Front USB Port & SD/SDHC/SDXC Card Slot
- Supports a Variety of Media Types

TOSHIBA



Toshiba Symbio BDX2400 Media Box and Blu-ray Player

- Supports Full HD 1080p Playback
- Access Online Entertainment Apps
- MediaShare DLNA Network Sharing
- BD Live & Bonus View
- Dolby & DTS Surround Sound
- Mobile Remote App Capable
- HDMI & USB Connectivity

TOSHIBA



Toshiba Symbio BDX6400 Media Box and Blu-ray Player

- Supports 2D & 3D Full HD 1080p
- Upconversion to Ultra HD 4K Resolution • BD Live & Bonus View
- Built-in Wi-Fi Miracast Connectivity
- Dolby & DTS Surround Sound
- Mobile Remote App Capable
- HDMI & USB Connectivity

Panasonic



Panasonic SC-BTT190 Full HD 3D Blu-ray Disc Home Theater System

- 3D Cinema Surround
- Home Theater Mode (RMS): 1000W
- Anti-Jitter Digital Amplifier
- 2D-3D Conversion • USB x 2
- Smartphone Remote Control Option
- 1080p Up-Conversion with HDMI
- External HDD Playback

SAMSUNG



Samsung HT-F4500 5.1-Channel Blu-ray Home Theater System

- 500W Total Power Output
- 3D Blu-ray Player & Passive Subwoofer
- Front, Center & Surround Speakers
- Apps Built-in for Streaming Content
- Dolby Digital & DTS Decoding
- HDMI Output
- Digital Optical Audio Input

SAMSUNG



Samsung HT-F9730W 7.1-Channel Blu-ray Home Theater System

- Full HD 1080p 2D & 3D Playback via HDMI • 7.1-Channel System
- Built-In Wi-Fi & Ethernet Connectivity
- Wi-Fi Direct • BD-Live Access
- Supports Digital Audio

Pioneer



Pioneer VSX-1023-K 7.1-Channel Network Ready AV Receiver

- 140W Power Output per Channel
- AirPlay Streaming & USB Connectivity
- HDMI In/Out with 4K & 3D Pass-Through
- Dolby TrueHD & DTS-HD Master Audio
- Supports Zone 2 Multi-Room Listening
- Works with Optional Bluetooth Adapter

OLYMPUS®

Olympus VN7100 1GB Digital Voice Recorder

- Built-in 1GB flash memory
- Recording Time: HQ mode: 39H, SP mode: 100H, LP mode: 573H
- Earphone and Mic 3.5 mm mini-jack
- Power Supply: 2x AAA alkaline (LR03 or R03) batteries



PHILIPS

Philips DVT5500 4GB Voice Tracer 5500 Digital Recorder

- Multiple Bit Rate PCM & MP3 Recording
- Built-In 3 Mic Auto Zoom Recording System
- Internal 4GB Memory & MicroSD Card Slot
- FM Stereo Tuner with 20 Presets
- Hi-Fi Recording & Pre-Recording
- Wireless Remote Control Included
- Includes 2 AAA Rechargeable Batteries



Canon



Canon PowerShot 330HS 12.1MP Digital Camera

- 12.1MP CMOS Sensor
- Canon 10x Optical Zoom Lens
- 35mm Equivalent Focal Length: 24-240mm • 3.0" LCD Monitor
- Continuous Shooting Rate of 6.2fps
- Full HD 1920 x 1080 Video
- Built-In Wi-Fi Connectivity

Nikon



Nikon D5100 Digital SLR Camera With 18-55mm f/3.5-5.6G VR Lens

- 16.2 MP DX-Format CMOS Sensor
- 3.0" Vari-Angle 921K Resolution LCD
- 1080p Movies w/Full Time Autofocus
- Nikkor 18-55mm f/3.5-5.6G VR Lens
- 35mm Lens Equivalent: 27-82.5mm
- Fast 11-Point Autofocus System

DON'T SEE WHAT YOU WANTED? WE CAN GET IT FOR YOU!

TOLL FREE – 800-873-5528 • LOCAL – 301-296-9400 • FAX – 301-296-9494

CONFERRING PHONES FOR SOHO APPLICATIONS

VoiceStation™ 300

2200-17910-001

- 360-degree room coverage** – A powerful, digitally-tuned custom speaker and three sensitive microphones provide uniform coverage from up to 7 feet away
- Hands-Free Calls** – A great hands-free conferencing solution for home offices and small businesses
- Easy to use and install** – Connects into any analog phone jack
- Secondary phone options** – Plug in a fax machine or computer modem, or a handset for private calls

- Ideally suited for desktops, offices, and other small rooms with 3-4 participants
- Features Polycom's award-winning Acoustic Clarity Technology
- Smart technology, such as Dynamic Noise Reduction (DNR), provides maximum microphone sensitivity, while reducing distracting room and background noise
- Full-duplex technology ensures that everyone on the call can be heard
- A handset phone can be plugged in for private calls, or simply switch back to the VoiceStation 300 for hands-free conversations.



VoiceStation™ 500

2200-17900-001

As above plus:

- Bluetooth connectivity** – High-quality hands-free calling through your mobile phone or the Internet. Use your Bluetooth-enabled mobile phone to connect wirelessly to the VoiceStation 500 for hands-free voice conferencing. It can also connect to a Bluetooth-enabled computer for high-quality hands-free conferencing using services such as Skype.
- 2.5mm applications port** – Plug into a wired connection for mobile phone and Internet calling when Bluetooth is not available



AC Power Supply

2200-17918-001

Replacement power supply for VoiceStation 100/300/500.

VTX1000 – TRUE HD VOICE CONFERRING

Polycom VTX 1000

Wideband Conference Phone

Unparalleled Room Coverage – Speak naturally from 2-feet to 20-feet and be heard clearly on the far end.

Revolutionary Voice Quality – The world's first phone to deliver wideband voice over ordinary telephone lines

Built-in Investment Protection – The world's first conference phone that allows you to download new software remotely through an ordinary telephone line to add new features and applications!

Maximum Configuration Flexibility – Has independent input and output, bass/treble controls, and internal mic and speaker control for multiple uses and applications including external speakers.

HD Voice

Polycom HD Voice delivers over twice the clarity of ordinary phone calls for life-like, vibrant conversations. It's like switching from AM radio to CD-quality audio. The difference is so astounding, you will never want to go back to regular phone calls.

- More natural conversations, significantly boosting recognition and enhancing productivity
- Hear every word without repeating • Remote collaboration with vibrant, life-like voice quality

Polycom HD Voice Includes:

- Wideband technology for over twice the clarity of ordinary phone calls
- Polycom's patented Acoustic Clarity Technology 2, which combines next generation, industry-leading full duplex, echo cancellation and noise reduction with advanced voice processing
- Best-in-class system design, bringing all of the software components together with hardware design for a total solution that maximizes the overall sound quality

SoundStation VTX 1000

2200-07300-001 Does not include Subwoofer and VTX EX Mics

SoundStation VTX 1000

2200-07500-001 Includes Subwoofer

SoundStation VTX 1000

2200-07142-001 Includes Subwoofer and VTX EX Mics

Accessories

- 2215-07155-001 Expansion (EX) microphone kit for SoundStation VTX 1000
- 2200-07242-001 Subwoofer with amplifier kit for SoundStation VTX 1000
- 2200-00699-001 Wireless Lapel Microphone with Frequency A = 171.905MHz
- 1676-07870-001 Neoprene carry case for SoundStation VTX 1000
- 2215-17409-001 Cable - External Speaker Integration Kit for SoundStation VTX 1000
- 2200-07156-001 Universal AC power supply/interface module for SoundStation VTX 1000
- 1457-07363-001 Cable - Subwoofer cable for SoundStation VTX 1000 – 2.8m/9.2ft RCA male to male
- 2200-41220-001 Cable - Two (2) expansion microphone cables, 2.1m/7ft for SoundStation VTX 1000
- 2200-41220-002 Cable - Two (2) expansion microphone cables, 4.6m/15ft for SoundStation VTX 1000
- 2200-41220-003 Cable - Two (2) expansion microphone cables (round), 7.6m/25ft for SoundStation VTX 1000
- 2457-07690-001 Cable - Console Cable connects SoundStation VTX 1000 console to the Interface Module/Power Supply. 6.4m/21ft
- 2457-07690-001 Cable - Console Cable connects SoundStation VTX 1000 console to the Interface Module/Power Supply. 15.1m/50ft



HDvoice

REMARKABLE VOICE QUALITY—THE NEW STANDARD FOR CONFERRING

SoundStation 2™ Basic

2200-15100-001

SoundStation 2 (No Display/Non-Expandable)

- Polycom Acoustic Clarity technology – Allows natural, interactive 2-way conversations (full duplex)
- Users can speak in a normal voice up to ten feet away from the console
- Three cardioid microphones provide 360° coverage so that everybody in the room can be heard clearly
- Dynamic Noise Reduction (DNR) automatically reduces room background noise from fans, projectors, heating and air conditioning for clearer sound and more efficient conferencing
- Intelligent microphone mixing automatically selects the microphone closest to the person speaking, eliminating extraneous background noises
- Single-cord connection to phone console – eliminates cable clutter on the tabletop
- Easy to use and install – no training required, connects into any analog phone jack
- Non-expandable



Enhanced and Expandable

SoundStation 2™ Enhanced

2200-16000-001

SoundStation 2 (With Display/Non-Expandable)

- Polycom Acoustic Clarity technology – Allows natural, interactive two-way conversations (full duplex)
- Users can speak in a normal voice up to ten feet away from the console
- Three cardioid microphones provide 360° coverage so that everybody in the room can be heard clearly
- Dynamic Noise Reduction (DNR) automatically reduces room background noise from fans, projectors, heating and air conditioning for clearer sound and more efficient conferencing
- Intelligent microphone mixing automatically selects the microphone closest to the person speaking, eliminating extraneous background noises
- Backlit graphical display for convenient, easy access to important call information – phone number, number called, duration/progress of call and Caller ID
- Auxiliary Input/Output Jacks – 2.5mm jack: Provides connection to other communication devices, such as a mobile phone, for hands-free conferencing
- RCA jack: Allows connections to other peripherals, such as an audio recorder
- Single-cord connection to phone console – eliminates cable clutter on the tabletop
- Easy to use and install – no training required, connects into any analog phone jack



SoundStation 2™ Expandable

2200-16200-001

SoundStation 2 (With Display/Expandable) (No Mics)

- As above but capable of having external mics added to allow for even greater room coverage



Accessories

2200-16155-001

Expansion microphones kit for SoundStation2. Includes two (2) expansion microphones and two (2) 3m/9.7ft expansion microphone cables.

1676-07870-001

Neoprene carry case for SoundStation2

2200-00699-001

Wireless Lapel Microphone with Frequency A = 171.905MHz

2200-07817-001

Cable - 2.5mm cell phone cable 1.2m/4ft for use with SoundStation2

2200-16020-001

AC Power Kit for SoundStation2. Includes wallmod power/telco module 110-120VAC 0.2A with NA plug, 9.2ft/2.8m RJ-11 to RJ-11 cable and 21ft/6.4m keyed RJ-45 power supply to console cable.

2200-17240-001

Computer Calling Kit-use SoundStation2 with LCD. 1.5m/5ft cable connects phone to a computer's 3.5mm mic/line in and line out jacks

2200-41220-001

Cable - Two (2) expansion microphone cables, 2.1m/7ft for SoundStation2

2200-41220-002

Cable - Two (2) expansion microphone cables, 4.6m/15ft for SoundStation2

2457-00449-001

Cable - 8 Wire Console Cable, keyed RJ-45 to RJ-45, 6.4m/21ft, for SoundStation2

2457-19047-001

Cable - 3.5mm mobile device cable 1.2m/4ft for use with SoundStation2. For devices with iPhone (R) style wiring and wiring used by many Samsung, Sony Mobile Communications and Nokia mobile devices



Konference-10910 Direct Phone Interface

- Digital to Analog Converter • Works with virtually any conference unit or direct connect speakerphone
- Connects to any standard teleconferencing unit RJ-11 jack • Requires telephone with modular handset
- Powered by AC adapter (included) **Konexx products cannot be returned to Target. Factory service only.**



CALL FOR CONTRACT AND QUANTITY PRICING

TOLL FREE – 800-873-5528 • LOCAL – 301-296-9400 • FAX – 301-296-9494

GO WIRELESS AND CONFERENCE FROM ANYWHERE

SoundStation 2W™ DECT 6.0 Wireless

2200-07880-160 Non-Expandable – 12 hour talk time

2200-07800-160 Expandable – 24 hour talk time

- Polycom's Award Winning Acoustic Clarity Technology for natural, simultaneous two-way conversations
- High performance mics and speaker for the best conferencing experience possible
- 1.9GHz DECT 6.0 Wireless for interference-free conversation
- Enough talk time to go wireless for a week without recharging • 150 ft. wireless range
- Portable charger allows for continued operation anywhere even when battery is low
- Rechargeable Li-Ion battery • Portable console charger
- Up to 24 hr talk time; 160 hr standby (EX version, or accessory purchase for Basic version)
- Up to 12 hr. talk time; 80 hr. standby (Basic version)
- 3 hr. recharge cycle (Basic version) • 6 hr. recharge cycle (EX Version)
- 64 bit Voice encryption for added security • Aux out (record) activated from console
- Great for group conferencing in facilities or temporary work spaces where there is no analog phone line. Connect a cell phone to the 2W via the standard headset cable for calls from anywhere service is available
- Software upgradeable through mini-USB port. • Easy to install, can be mounted on wall



Accessories

2200-07480-001 Expansion Microphone Kit for SoundStation2W (Expandable) only. Includes two (2) expansion microphones and two (2) 3m/9.7ft expansion mic cables

1676-07870-001 Neoprene carry case for SoundStation2W

2200-07803-002 12-Hour Talk Time Battery for SoundStation2W

2200-07804-002 24-Hour Talk Time Battery for SoundStation2W

2200-07817-001 Cable - 2.5mm cell phone cable 1.2m/4ft for use with SoundStation2W

2200-07878-001 Computer Calling Kit-enables use of SoundStation2W as speakerphone for VoIP calls via computer based softclients. 1.5m cable connects conference phone to a computer's 3.5mm mic/line in and line out jacks.

2200-41220-002 Cable - Two (2) expansion microphone cables, 4.6m/15ft for SoundStation2W (Expandable)

2200-42441-001 Power Supplies (2) for SoundStation2W base and console, 100-240V. Includes two (2) 1.8m/6ft power cords with NA plug.

2457-19047-001 Cable - 3.5mm mobile device cable 1.2m/4ft for use with SoundStation2W. For devices with iPhone (R) style wiring and wiring used by many Samsung, Sony Mobile Communications and Nokia mobile devices



SOUNDSTATIONS FOR AVAYA AND NORTEL SYSTEMS

SoundStation 2™ Avaya 2490 For Definity PBX Systems

2305-16375-001

(With Display/Expandable) For Avaya DEFINITY users, communicating with crystal clarity couldn't be easier. Just connect a SoundStation2 Avaya directly into a DEFINITY ECS digital wall jack. You don't need an analog port, analog adapter, or complicated connections to take advantage of natural two-way conversations with Polycom's breakthrough Acoustic Clarity Technology.

- Connects directly to Avaya DEFINITY ECS digital PBX wall jack
- Polycom Acoustic Clarity™ technology for remarkable voice quality • 10-foot microphone pickup range
- Resists interference from mobile phones • Large LCD display for caller ID and other call information
- Ideal for medium-sized to small conference rooms

2200-16155-001 Expansion microphones kit for SoundStation2 Avaya 2490. Includes two (2) expansion microphones and two (2) 3m/9.7ft expansion microphone cables.

2305-06415-001 Interface Module, SoundStation2, Avaya, u-Law

2200-43019-001 Power Adapter, SoundStation2, Avaya



SoundStation 2™ Direct Connect For Nortel Meridian PBX Systems

2200-17120-001

(With Display/Expandable) SoundStation2 Direct Connect provides users with advanced features including a large backlit display that offers easily visible call information and telephone functions.

Smart technology, such as Dynamic Noise Reduction (DNR), provides maximum microphone sensitivity, while reducing distracting room and background noise. Plus, the SoundStation2 Direct Connect provides direct access to your Nortel/Meridian PBX conferencing feature, allowing quick and easy connections of up to six locations in a single conference call without using a conference bridging service.

- Connects directly to Nortel Meridian digital PBX wall jack • Polycom Acoustic Clarity™ technology for remarkable voice quality
- 10-foot (3.5-meter) microphone pickup range • Resists interference from mobile phones
- Large LCD display for caller ID and other call information • Ideal for medium-sized to small conference rooms

2200-16155-001 Expansion microphones kit for SoundStation2 Nortel. Includes two (2) expansion microphones and two (2) 3m/9.7ft expansion microphone cables.

2305-06415-001 Interface Module, SoundStation2, Nortel, u-Law

2200-43019-001 Power Adapter, SoundStation2, Nortel



SOUNDSTRUCTURE™ C-SERIES – HIGH PERFORMANCE AUDIO SOLUTION



Key Benefits

Immersive Audio Experience

- 22 kHz stereo acoustic echo cancellation (AEC) is an industry first, delivering a more life-like experience and enables audio from different remote locations to be routed through different loudspeakers, improving talker identification and localization
- Feedback elimination on every input lets you design the sound reinforcement system to match the room environment while minimizing annoying feedback
- Comprehensive input, output and submix processing delivers the ultimate in flexibility for any room configuration
- Gain sharing and gating automixers provide smoother transitions between talkers, resulting in more natural conversations

Easy to Install and Configure

- OBAM™ matrix architecture makes it easy to seamlessly connect multiple units together, for up to 128 inputs and outputs
- SoundStructure Studio software makes it easy to design your room audio, whether large or small, making installations simpler and faster
- Flexible telephony options for single or dual-line PSTN cards today, with easy future upgradeability
- Integrated Ethernet lets you access the system from anywhere on the network

Polycom Integration

- Direct integration with Polycom HDX with auto-discovery, configuration and fully digital audio
- Extend HDX audio features such as StereoSurround™ and Siren™ 22 with SoundStructure's stereo AEC and advanced processing for a truly immersive experience for users
- Integration with HDX microphones delivers a solution that is easy to configure and install, even in audio-only environments without video conferencing

Value for Your Audience

To the AV Professional

- Advanced audio processing delivers the ultimate in sound quality and flexibility
- 22 kHz stereo AEC delivers amazing audio
- Integrated Ethernet makes it easy to configure and manage
- Flexible telephony options provide investment protection and upgradeability
- Polycom HDX integration ensures your conferencing solutions work together seamlessly
- HDX microphone options provide flexibility and easy integration

To the End User

- Natural, life-like conferencing makes meetings more productive
- Easier to hear all participants, even if they are at room's edge or are quiet talkers
- Use the familiar HDX remote control or control panel system – no new interfaces



Polycom® SoundStructure® installed audio solutions deliver high definition clarity to voice and video conferences for improved productivity and faster decision making. Advanced design and custom configuration capabilities allow you to quickly and efficiently deliver world-class audio quality to a variety of room environments. Seamless integration with Polycom video and voice conferencing solutions creates life-like experiences, with Polycom immersive and room telepresence solutions, Polycom HDX microphones, and Polycom Ceiling Microphone Arrays delivering unmatched video and voice collaboration quality.

COMPLETE PARTS LIST ON NEXT PAGE

POLYCOM HAS THE RIGHT SOLUTION FOR YOUR APPLICATION

TOLL FREE – 800-873-5528 • LOCAL – 301-296-9400 • FAX – 301-296-9494

SOUNDSTRUCTURE™ C-SERIES – HIGH PERFORMANCE AUDIO SOLUTION

2200-33080-001 SoundStructure C8
8-Channel AEC/Noise Canceller/Feedback
Reduction with Auto Mic Mixing and Matrix Mixer



2200-33120-001 SoundStructure C12
12-Channel AEC/Noise Canceller/Feedback Reduction with Auto Mic Mixing and Matrix Mixer

2200-33160-001 SoundStructure C16
16-Channel AEC/Noise Canceller/Feedback Reduction with Auto Mic Mixing and Matrix Mixer

2200-35003-001 SoundStructure TEL1
PSTN Interface for C-Series and SR Series

2200-35004-001 SoundStructure TEL2
Dual-Line PSTN Interface for C-Series and SR Series

2200-36120-001 SoundStructure SR12
12-Channel Noise Canceller/Feedback Reduction with Auto Mic Mixing and Matrix Mixer

2200-35005-001 SoundStructure VoIP Interface
SIP interface with HDVoice for SoundStructure C and SR series products

Accessories

2200-23809-001 Ceiling Microphone array-Black "Primary". Includes 2ft/60cm drop cable, electronics Interface, wall plate with 10ft/3m & 50ft/15m plenum cable, RJ45(F)/Walta(M)

2200-23809-002 Ceiling Microphone array-White "Primary". Includes 2ft/60cm drop cable, electronics Interface, wall plate with 10ft/3m & 50ft/15m plenum cable, RJ45(F)/Walta(M)

2200-23810-001 Ceiling Microphone Array - Black "Extension" Kit: Includes 2ft/60cm drop cable, electronics interface, 25ft/7.6m plenum cable. For use with Ceiling Microphone Array 2200-23809-001 shown above. Platform dictates maximum # supported.

2200-23810-002 Ceiling Microphone Array - White "Extension" Kit: Includes 2ft/60cm drop cable, electronics interface, 25ft/7.6m plenum cable. For use with Ceiling Microphone Array 2200-23809-002 shown above. Platform dictates maximum # supported.

2200-24008-011 CLINK2 Crossover cable, 50-feet. Shielded, plenum rated. Links any two CLINK2 devices that use RJ-45 type sockets.

2200-24009-011 CLINK2 Crossover cable, 25-feet. Shielded, plenum rated. Links any two CLINK2 devices that use RJ-45 type sockets.

2200-24010-011 CLINK2 Crossover cable, 100-feet. Shielded, plenum rated. Links any two CLINK2 devices that use RJ-45 type sockets.

2200-33199-001 Reinforced Rack ears for SoundStructure includes chassis screws

2200-33206-001 SoundStructure Headset Interface Adapter w/ 25ft RJ9 handset cable, Phoenix cables, 3ft Phoenix to Phoenix cables (2), and Instruction Manual.

2200-44238-001 SoundStructure, Logic Port DB25 (M) connector with screw terminals

2200-43229-001 OBAM cable (40ft) links multiple SoundStructure units. For all C-series and SR-series

2215-23327-001 HDX Mica Microphone Array. Contains one Microphone Array. Compatible with HDX Series, CX7000 and SoundStructure. Includes CLink 2 cable: 25ft/7.6M Walta to Walta.

2215-80031-001 SoundStructure Accessory Kit. Contains twelve (12) Phoenix-type screw-terminal connectors for use with all models.

2457-17625-001 OBAM cable (12") links multiple SoundStructure units. For all C-series and SR-series

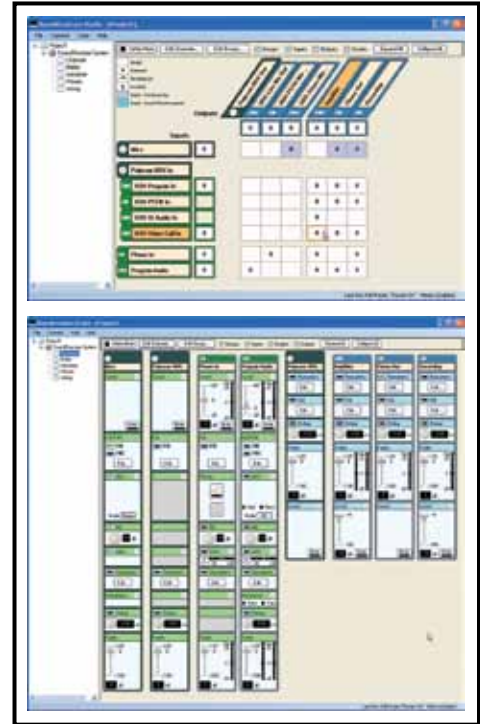
2457-23574-001 CLINK2 Crossover cable, 18-inches, shielded, special length for Group Series/HDX link to SoundStructure in same rack.

2457-23716-001 CLINK2 cable, HDX microphone array cable RJ45 to Walta(F) adapts HDX microphone cable to HDX 9000 series codecs

2457-25646-001 CLINK2 cable, Walta (codec side) to RJ-45F Adapter Cable. For connecting Ceiling Microphone Array or other RJ-45 CLink 2 cable to Group Series & HDX8000/7000/6000/4000 series codecs.

2457-26764-072 Extended length Black "drop cable" for connecting Spherical Ceiling Microphone Array element to electronics interface. 6ft (1.8m) long. Used with 2200-23809-001 & 2200-23810-001 only. Replaces 2457-24701-001

2457-26765-072 Extended length White "drop cable" for connecting Spherical Ceiling Microphone Array element to electronics interface. 6ft (1.8m) long. Used with 2200-23809-001 & 2200-23810-001 only. Replaces 2457-24701-003



VORTEX® CUSTOM INSTALLED CONFERRING PRODUCTS FOR ANY SIZE ROOM

Polycom's Vortex line is designed for high-performance installed voice conferencing applications. Vortex products are used worldwide in corporate board rooms, distance learning classrooms, courtrooms, hotels, and other facilities requiring high-quality voice communication between sites. The Vortex line integrates easily with other products including Polycom's HDX™ and VSX™ lines of video conferencing systems, the SoundStation VTX 1000 wideband conference phone, and other products used in system integration. Vortex products can be easily controlled using handheld controllers (including the EF-IR11 and VSX remotes), room controllers such as AMX® and Crestron®, and the SoundStation VTX 1000. Remote control and configuration over an Ethernet connection is also easy with the Vortex Ethernet Interface. Upload or download settings and monitor devices in real time, as if you were directly connected.



All Vortex® products measure 19" x 9.8" x 1.75" and are designed to be installed in a standard equipment rack. Connections to microphones, video conferencing equipment and other devices are made on the rear panel.

VORTEX EF2201

A DSP based "phone add" for audio and video conferencing.

VORTEX EF2210

Echo and noise canceller for upgrading existing systems for conferencing.

VORTEX EF2211

Echo and noise canceller with "phone add" and power amp.

VORTEX EF2241

4-channel mic/matrix mixer with "phone add" and power amp.

VORTEX EF2280

Multi-channel mic/matrix mixer for large room applications.

Model	2200-82201-001	2200-82210-001	2200-82211-001	2200-12241-001	2200-12280-001
No. of mic inputs	0	1	1	4	8
No. of line inputs	0	2	2	4	4
No. of line outputs	0	3	3	8	12
PSTN Interface	✓	NO	✓	✓	NO
Auto mic mixer	NO	✓	✓	✓	✓
Noise Cancellation	✓	✓	✓	✓	✓
Auto Gain Control	✓	✓	✓	✓	✓
EQ on Input/Output	✓	✓	✓	✓	✓
Echo Cancellation	0 Channels	1 Channel	1 Channel	4 Channels	8 Channels
VTX 1000 Interface	NO	NO	NO	✓	✓
10W Amplifier	NO	✓	✓	✓	NO
RS232 Interface	✓	✓	✓	✓	✓
# of Linked Devices	8 Maximum	8 Maximum	8 Maximum	8 Maximum	8 Maximum
Quick Install Packs	NO	NO	NO	✓	NO

Accessories

1565-17161-001	Two 2'x2' grid ceiling mount loudspeakers
1565-17162-001	Two 6" 2-way ceiling loudspeakers with 4" woofer
2200-60017-003	Vortex power supply
2200-80099-001	Vortex EF-IR11 Infra-Red Remote Control for use with EF2280, EF2241, EF2201, 2211 and EF2210
2200-81100-001	Vortex Ethernet Interface including 3' RS232 cable, external power supply, instructional manual, and Vortex CD
2200-82000-001	Dual RS232, Ethernet interface
2215-07766-001	2 12' RCA male to 3.5mm phoenix connectors for interfacing Vortex products to "Vortex-ready" Soundstation VTX 1000 or to Polycom video codecs. White and Black color coded connectors.
2215-80031-001	SoundStructure Accessory Kit. Contains twelve (12) Phoenix-type screw-terminal connectors for use with all models
2215-80133-001	Table Microphone kit. Includes 4 boundary microphones and cables, 100' speaker cable, 4 RCA to phoenix cables, installation guides, mounting brackets and accessories
2215-80134-001	Ceiling Microphone kit. Includes 4 ceiling microphones and cables, 100' speaker cable, 4 RCA to phoenix cables, installation guides, mounting brackets and accessories
8215-42072-001	One table top directional microphone and 25' microphone cable
8215-42073-001	One omni directional ceiling mount microphone and 50' microphone cable

TARGET IS YOUR BEST SOURCE FOR POLYCOM

TOLL FREE – 800-873-5528 • LOCAL – 301-296-9400 • FAX – 301-296-9494

HIGH PERFORMANCE VIDEO COLLABORATION



Polycom® RealPresence® Group 700

Video collaboration is mission-critical for productive and efficient meetings when everyone can't be in the same location. In many environments getting the most out of video meetings requires multiple displays, flexible audio configurations, and the ability to easily switch between many content sources. The Polycom® RealPresence® Group 700 is the ideal solution for meetings that require the best performance and flexibility, from boardrooms to large lecture halls.

RealPresence Group 700 is fully standards-based; able to connect to millions of other standards-based video systems in use today. Native interoperability with leading unified communications (UC) platforms means that video now easily integrates with the way you already communicate without adding expensive and complex gateways. The RealPresence Group Series also offers Telepresence Interoperability Protocol (TIP) support for direct connection to non-standards-based Cisco environments. Polycom's unique interoperable SVC architecture is the first to provide video calling between both existing video systems and new SVC systems. This unique approach delivers unmatched investment protection and avoids "video islands" that lock you into only calling other like systems.

Polycom continues to lower the total cost of ownership of video collaboration by extending the benefits of H.264 High Profile to 1080p60 people and content. You experience whole new levels of realism with up to 50 percent less bandwidth. For existing Polycom customers, RealPresence Group Series allows you to leverage previous investments in Polycom technology, including select cameras, microphones, and UC innovations such as Polycom® EagleEye Director and Polycom® Touch Control.

- 1080p60 video, delivering a new level of clarity and realism
- 1080p60 content, making everything from presentation slides to full-motion video look as natural as being there
- Simultaneous dual-stream 1080p60 people and content (Group 700) helps to eliminate compromises when sharing across distances
- Polycom Constant Clarity™, a set of industry-leading audio technology that dramatically improves the sense of realism
- Polycom® Lost Packet Recovery™ (LPR™) technology protects the experience by helping to ensure great quality even when experiencing network issues
- Polycom SmartPairing™ technology, making it simple to use your own tablet to start and manage video calls
- Optional Polycom Touch Control for an intuitive graphical touch interface on a 7-inch (18-cm), high resolution screen
- Up to 8-way integrated multi-point (select models, via optional license key), enabling more people to join calls without requiring a separate bridge
- HDMI inputs and outputs for simplified installation and cabling
- Standards-based interoperability with millions of video conferencing systems in use today
- Native interoperability with Microsoft Lync without expensive and complex gateways
- Telepresence Interoperability Protocol (TIP) support, for direct connection to non-standards-based Cisco environments
- Interoperable SVC architecture, providing video calling between both existing video systems and new SVC systems
- H.264 High Profile standard, content and integrated multi-point, for up to 50% bandwidth savings

7200-63450-001 RealPresence Group 700-720p: Group 700 HD codec, EagleEye III camera, mic array, univ. remote, NTSC/PAL. Cables: 1 HDMI 1.8m, 1 CAT 5E LAN 3.6m, 1 HDCI analog 3m, Power: AMER-Type B, NEMA 5-15. Maintenance Contract Required.

7200-63520-001 RealPresence Group 700-1080p: Group 700 HD codec, EagleEye III camera, mic array, univ. remote, NTSC/PAL. Cables: 1 HDMI 1.8m, 1 CAT 5E LAN 3.6m, 1 HDCI analog 3m, Power: AMER-Type B, NEMA 5-15. Maintenance Contract Required.

HIGH PERFORMANCE VIDEO COLLABORATION



Polycom® RealPresence® Group 500

The RealPresence® Group 500 is ideal for conference rooms and other collaborative environments, from small meeting rooms to larger rooms with dual screens. Next generation performance is combined with a simple user interface for an experience that will delight users while IT administrators will admire the compact design, broad interoperability, and the industry's lowest total cost of ownership.

The sleek, compact design of the RealPresence Group 500 device allows for discreet placement and helps simplify your setup with single-cable connections for video and audio. Plus, the compact design also makes it ideal for mobile applications, whether moved to different locations within a building or outside of a traditional office.

The RealPresence Group 500 is fully standards-based; able to connect to millions of other standards-based video systems in use today. Native interoperability with leading unified communications (UC) platforms means that video now easily integrates with the way you already communicate without adding expensive and complex gateways. The RealPresence Group Series also offers optional Telepresence Interoperability Protocol (TIP) support for direct connection to non-standards-based Cisco environments. Polycom's unique interoperable SVC architecture is the first to provide video calling between both existing video systems and new SVC systems. This unique approach delivers unmatched investment protection and avoids "video islands" that lock you into only calling other like systems.

- 1080p60 video, delivering a new level of clarity and realism
- 1080p60 content, making everything from presentation slides to full-motion video look as natural as being there
- Dual-stream 1080p60 / 1080p30 people and content, helps to eliminate compromises when sharing across distances
- Polycom Constant Clarity™, a set of industry-leading audio technology that dramatically improves the sense of realism
- Polycom® Lost Packet Recovery™ (LPR™) technology protects the experience by helping to ensure great quality even when experiencing network issues
- Polycom SmartPairing™ technology, making it simple to use your own tablet to start and manage video calls
- Optional Polycom Touch Control for an intuitive graphical touch interface on a 7-inch (18-cm), high resolution screen
- Up to 8-way integrated multi-point (select models, via optional license key), enabling more people to join calls without requiring a separate bridge
- HDMI inputs and outputs for simplified installation and cabling
- Standards-based interoperability with millions of video conferencing systems in use today
- Native interoperability with Microsoft Lync without expensive and complex gateways
- Telepresence Interoperability Protocol (TIP) support, for direct connection to non-standards-based Cisco environments
- Interoperable SVC architecture, providing video calling between both existing video systems and new SVC systems
- H.264 High Profile standard, content and integrated multi-point, for up to 50% bandwidth savings

7200-63430-001 RealPresence Group 500-720p: Group 500 HD codec, EagleEye III camera, mic array, univ. remote, NTSC/PAL. Cables: 2 HDMI 1.8m, 1 CAT 5E LAN 3.6m, 1 HDCI analog 3m, Power: AMER-Type B, NEMA 5-15. Maintenance Contract Required.

7200-63490-001 RealPresence Group 500-1080p: Group 500 HD codec, EagleEye III camera, mic array, univ. remote, NTSC/PAL. Cables: 2 HDMI 1.8m, 1 CAT 5E LAN 3.6m, 1 HDCI analog 3m, Power: AMER-Type B, NEMA 5-15. Maintenance Contract Required.

7200-63550-001 RealPresence Group 500 - 720p: Group 500 HD codec, EagleEye Acoustic cam., univ. remote, NTSC/PAL. Cables: 2 HDMI 1.8m, 1 CAT 5E LAN 3.6m, Power: AMER - Type B, NEMA 5-15. Maintenance Contract Required.

7200-63630-001 RealPresence Group 500 - 1080p: Group 500 HD codec, EagleEye Acoustic cam., univ. remote, NTSC/PAL. Cables: 2 HDMI 1.8m, 1 CAT 5E LAN 3.6m, Power: NA - Type B, NEMA 5-15. Maintenance Contract Required

HIGH PERFORMANCE VIDEO COLLABORATION

Polycom® RealPresence® Group 300

The sleek, compact design of the RealPresence Group 300 device allows for discreet placement and helps simplify your setup with single-cable connections for video and audio. Plus, the compact design also makes it ideal for mobile applications, whether moved to different locations within a building or outside of a traditional office.

Optimized for smaller groups, the Polycom® RealPresence® Group 300 is ideal for small meeting rooms, huddle rooms, and offices. It features simple setup and configuration, and a compact, sleek design that is easily hidden out of sight, keeping your rooms clutter-free.

- 1080p60 video, delivering a new level of clarity and realism
- 1080p60 content, making everything from presentation slides to full-motion video look as natural as being there
- Dual-stream 1080p60 / 1080p30 people and content, helps to eliminate compromises when sharing across distances
- Polycom Constant Clarity™, a set of industry-leading audio technology that dramatically improves the sense of realism
- Polycom® Lost Packet Recovery™ (LPR™) technology protects the experience by helping to ensure great quality even when experiencing network issues
- Polycom SmartPairing™ technology, making it simple to use your own tablet to start and manage video calls
- Optional Polycom Touch Control for an intuitive graphical touch interface on a 7-inch (18-cm), high resolution screen
- Up to 8-way integrated multi-point (select models, via optional license key), enabling more people to join calls without requiring a separate bridge
- HDMI inputs and outputs for simplified installation and cabling
- Standards-based interoperability with millions of video conferencing systems in use today
- Native interoperability with Microsoft Lync without expensive and complex gateways
- Telepresence Interoperability Protocol (TIP) support, for direct connection to non-standards-based Cisco environments
- Interoperable SVC architecture, providing video calling between both existing video systems and new SVC systems
- H.264 High Profile standard, content and integrated multi-point, for up to 50% bandwidth savings



7200-63420-001 RealPresence Group 300 -720p: Group 300 HD codec, EagleEye III camera, mic array, univ. remote, NTSC/PAL. Cables: 1 HDMI 1.8m, 1 CAT 5E LAN 3.6m, 1 HDCI analog 3m, Power: AMER-Type B, NEMA 5-15. Maintenance Contract Required.

7200-63530-001 RealPresence Group 300 - 720p: Group 300 HD codec, EagleEye Acoustic cam., univ. remote, NTSC/PAL. Cables: 1 HDMI 1.8m, 1 CAT 5E LAN 3.6m, Power: AMER - Type B, NEMA 5-15. Maintenance Contract Required

RealPresence CAMERAS and SOFTWARE

Cameras

8200-63730-001 EagleEye 3 Camera

with 2012 Polycom logo. Compatible with RealPresence Group Series. Includes 3m HDCI cable.

8200-63740-001 EagleEye 3 Camera

with 2012 Polycom logo. Compatible with RealPresence Group Series. Includes 10m HDCI cable.

2200-69178-001 EagleEye Director Base - No Camera

EagleEye Director base with no camera, compatible with EagleEye II and EagleEye III cameras, for use with Group Series software version 4.0.0 or later. Includes required power supply adaptor. NA power cord. Maintenance Contract Required.

2624-65058-001 EagleEye Acoustic Camera

Compatible with Group Series HDCI inputs. Electronic Pan Tilt 3x Digital Zoom. Auto focus. Embedded stereo microphone. Single built-in HDCI cable (incl: power, Comm, IR, Y/Pb/Pr, audio) 2M cable length.

7200-69180-001 EagleEye Director and EagleEye 3 Camera

EagleEye Director and one EagleEye 3 Camera, for use with Group Series systems with software version 4.0.0 or later. Includes required power supply adaptor. NA power cord. Maintenance Contract Required.

7200-69181-001 EagleEye Director and EagleEye 3 Cameras

EagleEye Director and two EagleEye 3 Cameras, for use with Group Series systems with software version 4.0.0 or later. Includes required power supply adaptor. NA power cord. Maintenance Contract Required.

Software and Licenses

5150-65081-001 Group Series Multipoint Software License

Allows 6-way multipoint in continuous presence video calls on Group 500, 550 (4-way in HD); 8-way multipoint in continuous presence on the Group 700. Valid for Group 500, 550, 700. Maintenance Contract Required.

5150-65082-001 Group Series 1080p HD Software License

Enables 1080 encode/decode for both people and content. Valid for Group 300, 500, 550, 700.

5150-65083-001 Group Series RTV/CCCP License

Enables support for Microsoft RTV codec and direct calls to MS AV MCU. Valid for Group 300, 500, 550, 700. Maintenance Contract Required.

5150-65084-001 Group Series TIP License

Enables support for Cisco TIP compatibility. Valid for Group 300, 500, 550, 700. Maintenance Contract Required.

5150-65085-001 Group 300 Dual Display Software License

Enables 2nd monitor output (HDMI). Valid for Group 300 only. Maintenance Contract Required.

HDX9000 – THE ULTIMATE HIGH-DEFINITION INTEGRATOR'S CODEC



Polycom® HDX® 9000 Series

Power, performance and flexibility for highly integrated video conferencing environments

- True high definition (HD) video up to 1080p30 or 720p60 resolution with the ability to connect multiple HD video sources
- Polycom's VC2 vision realized with presence capabilities and full management of systems through Polycom Converged Management Application™ solution
- Hear voices and music clearly with 22 kHz audio in StereoSurround™
- Share HD content easily in native resolution including images, documents and multimedia
- Easily integrate video system into your environment
- See and hear every detail with amazing clarity—Polycom Ultimate™ technology
- Experience optimal video at any bandwidth starting from 128 Kbps with H.264 High Profile
- Expanded audio and video I/O allows easy integration for your application
- Share CAD drawings, movies, images, spreadsheets—and more—all in native resolution
- Join multiple participants in a single call easily and quickly
- Easily expand the audio benefits by integrating with Polycom SoundStructure™



2200-26500-001 720p Codec

HDX 9000-720 HDX 9000 codec with mounting ears, 11*Phoenix connectors, P+C, PPCIP, PoC. English remote (Maintenance Contract Required)

2200-26740-001 1080p Codec

HDX 9000-1080 HDX 9000 codec with mounting ears, 11*Phoenix connectors, P+C, PPCIP, PoC. 1080 License, English remote (Maintenance Contract Required)
Camera and microphones not included with either codec shown above.

ACCESSORIES AND SOFTWARE

8200-09800-001 EagleEye 3 Camera

EagleEye 3 Camera, compatible with QDX, HDX 6000 & 7000 main HDCI input and 8000 and 9000 series main and auxiliary HDCI inputs with software version 3.0.1 or later. Includes 3m cable and required power supply adaptor. NA power cord.



2200-82559-001 EagleEye Director

EagleEye Director, compatible with EE 2, EE 3, HDCI inputs and HDX software version 3.0.1 or later. Includes required power supply adaptor. NA power cord. (Maintenance Required)

5150-23912-001 HDX MPPlus Software Option License

Allows for 4 site MP video calls. Available for HDX systems (4000, 4500, 7000, 8000 and 9000 Series)

5150-26946-001 Software Option

For HDX 7000 revC, HDX 8000 revB and HDX 9000 revB systems to enable 1080 encode/decode, 1080p codec

5150-63889-001 HDX RTV/CCCP License

Enables support for Microsoft RTV codec and direct calls to MS AV MCU. Available for HDX 9006, HDX 8000 rev B, HDX 7000 rev C or D, HDX 6000, HDX 4500, HDX 4000 rev C

5150-63611-001 HDX TIP License

Enables support for Cisco TIP compatibility. For HDX 9000 rev B, HDX 8000 rev B, HDX 7000 rev C, HDX 4500, HDX 4000 rev C.

2200-30070-001 Touch Control

Polycom Touch Control for use with HDX 6000, 7000, 8000, and 9000 series codecs with software version 3.0 or later. Requires PoE network connection or optional external power supply (2200-42740-XXX).



2215-23365-001 Network Module Quad BRI Module for HDX 9000 Series. Includes four 20ft/6m ISDN cables (with green connectors).

2215-23366-001 Network Module Serial Network Module for HDX 9000 (V.35, RS449, RS350 with RS366 dialing) . Includes HD68-DB44 adapter.

2215-23367-001 Network Module T1/PRI Module for HDX 9000 Series. Includes one 20ft/6m PRI cable (with clear connector)

CALL FOR THE LATEST VERSIONS OF AVAILABLE OPTIONAL SOFTWARE

LET TARGET'S EXPERTS TEACH YOU VIDEOCONFERENCING

TOLL FREE – 800-873-5528 • LOCAL – 301-296-9400 • FAX – 301-296-9494

HDX8000 – FLEXIBLE HD VIDEO, VOICE, & CONTENT COMMUNICATION



Polycom® HDX® 8000 Series

For media-rich group presentations, Polycom HDX 8000 Series systems enable users to display rich-media content and data easily, enhancing collaboration and audience participation. And utilizing Polycom HDX 8000 Series systems in tandem with Polycom's unique People On Content™ collaboration technology allows presenters to insert their video images into projected content to explain key elements more clearly. Polycom HDX 8000 Series systems are a key element of the total Polycom visual communication solution, which includes seamless integration with the Polycom RMX® 2000 or RMX 4000 conference platforms, Polycom Converged Management Application® Series for management and scheduling, or the Polycom SoundStation® IP 7000 conference phone for an integrated voice and video experience.

- High Definition Video – Up to 1920 x 1080 (1080p30) or 1280 x 720 (720p60) resolution for excellent video quality quality at all data rates
- High Definition Voice – Polycom Siren™ 22 and Polycom StereoSurround™ technology for powerful, superior room-filling audio performance
- High Definition Content Sharing – Clarity and ease of sharing multimedia content from video to slide presentations in crisp high-definition
- Flexible Furniture Solutions – Stunning high-definition displays, powerful audio output and stylish design available in optional packaged furniture solutions

7200-23150-001 720p Codec

HDX 8000-720: HDX 8000 HD codec, EagleEye camera, HDX mic array, Eng rmt. Cables: 2 component video (DVI-RCA), audio (RCA-RCA), LAN, NA pwr. NTSC (Maintenance Contract Required)

7200-23160-001 1080p Codec

HDX 8000-1080: HDX 8000 HD codec, EagleEye camera&license, HDX mic array, Eng rmt. Cables: 2 component video (DVI-RCA), audio (RCA-RCA), LAN, NA pwr. NTSC (Maintenance Contract Required)

5150-23912-001 HDX MPPlus Software Option License

Allows for 4 site MP video calls. Available for HDX systems (4000, 4500, 7000, 8000 and 9000 Series)

ACCESSORIES

1676-27233-001 Hard Case

Transport Case for HDX 6000/7000/8000. Hard case with casters, retractable handle and custom foam interior. Accommodates base unit, EagleEye, up to 50'/15m camera cable, mic array, H.320 module, remote control and applicable cables (not included).

2215-28283-001 Mounting Shelf

Shelf for mounting the HDX 8000, 7000 and 6000 series codecs. Black 2u shelf for 19" racks which will hold the codec in position with a secure mounting.

2200-30070-001 Touch Control

Polycom Touch Control for use with HDX 6000, 7000, 8000, and 9000 series codecs with software version 3.0 or later. Requires PoE network connection or optional external power supply (2200-42740-XXX).

2215-26690-001 Network Module Quad BRI Module for HDX Series. Includes four ISDN 20ft/6m cables and HDX external peripheral interface box.

2215-26694-001 Network Module PRI T1 Module for HDX Series. Includes one 20ft/6m PRI cable and HDX external peripheral interface box.

2215-26696-001 Network Module V.35 Module for HDX series. Includes HD68-DB44 adapter and HDX external peripheral interface box

CALL FOR THE LATEST VERSIONS OF AVAILABLE OPTIONAL SOFTWARE

HDX7000 – HIGH DEFINITION QUALITY WITH FLEXIBILITY AND RELIABILITY

Polycom® HDX® 7000 Series

The Polycom® HDX® 7000 series provides flexible, affordable HD video conferencing for high-quality communication throughout mainstream workplace environments. Expanding the utility of visual communication quickly and easily, Polycom HDX 7000 series systems are ideal for education, medical, enterprise and on-demand collaboration applications. For rich-media group presentations, Polycom HDX 7000 series systems display dynamic content and data in HD to enhance collaboration and audience participation. With Polycom People+Content™ collaboration technology, users can share presentations and live video simultaneously, allowing conference participants to interact naturally and dynamically. Polycom HDX 7000 series systems are a key element of the total Polycom visual communication solution, which includes seamless integration with the Polycom RMX® series conference platforms, as well as with Polycom Converged Management Application™ series for management and scheduling.

- High-definition video – Up to 1920 x 1080 (1080p) or 1280 x 720 (720p) resolution for excellent video quality at all data rates
- High-definition voice – Polycom Siren™ 22 and Polycom StereoSurround technology for superior audio performance
- High-definition content sharing – Polycom collaboration technology for sharing graphics, presentations and rich-media content with HD and non-HD systems
- Embedded multipoint – Optional four-way embedded multipoint bridge for greater flexibility and participation
- Flexible connectivity – Optional H.320 interfaces for easy access to BRI, PRI or serial networks



7200-23130-001 720p Codec

HDX 7000-720: HDX 7000 HD codec, EagleEye camera, HDX mic array, Eng rmt. Cables: 2 component video (DVI-RCA), audio (RCA-RCA), LAN, NA pwr. NTSC (Maintenance Contract Required)

7200-23140-001 1080p Codec

HDX 7000-1080: HDX 7000 HD codec, EagleEye camera&license, HDX mic array, Eng rmt. Cables: 2 component video (DVI-RCA), audio (RCA-RCA), LAN, NA pwr. NTSC (Maintenance Contract Required)

5150-23912-001 HDX MPPlus Software Option License

Allows for 4 site MP video calls. Available for HDX systems (4000, 4500, 7000, 8000 and 9000 Series)

HDX6000 – INTUITIVE, POWERFUL, & AFFORDABLE ROOM TELEPRESENCE

Polycom® HDX® 6000 Series

Intuitive to use and manage, the HDX 6000 delivers telepresence experiences to standard meeting rooms, conference rooms, and other environments requiring simple connectivity. HDMI output allows for quick and seamless integration with high definition displays via a single cable, while powerful standards-based Polycom People+Content™ allows users to easily and quickly share high quality documents, spreadsheets and multimedia content. Home theater quality audio experiences are delivered by Polycom Siren™ 22 and Polycom StereoSurround™ sound, giving users unrivaled acoustic clarity.

Polycom offers the entire solution

The Polycom HDX 6000 series seamlessly integrates with all components of the Polycom Visual Communication portfolio, including the Polycom RealPresence™ Experience (RPX™), Polycom Telepresence Experience™ (TPX™), Polycom HDX telepresence solutions, Polycom RMX® series conference platforms, and Polycom Converged Management Application™ (CMA™). Additionally, the HDX 6000 leverages our exclusive Polycom Lost Packet Recovery™ (LPR™) technology for enabling high quality user experiences, even across congested public networks.

- Reduced operating costs and clearer communication across all parts of your organization
- Faster decision making and execution on mission critical projects
- Maintain a quality experience on any network, from a home office to a corporate board room with Polycom Lost Packet Recovery (LPR) technology
- Incredible video quality starting from 128 Kbps



7200-23170-001

HDX 6000 View codec, Eagle Eye View with internal microphones and 3m cable. English remote and cable bundle (HDMI and LAN) (Maintenance Contract Required)

7200-29025-001

HDX 6000 HD codec, Eagle Eye HD with 3m cable. HDX Microphone with 25-foot cable. English remote and cable bundle (HDMI and LAN). P+C and PPCIP. (Maintenance Contract Required)

TARGET IS YOUR BEST SOURCE FOR POLYCOM

TOLL FREE – 800-873-5528 • LOCAL – 301-296-9400 • FAX – 301-296-9494

HDX4500 – STATE-OF-THE-ART HD VIDEO CONFERENCING FOR THE DESKTOP

Polycom® HDX® 4500 Series

- Natural collaboration with a 24 inch screen • High Definition up to 720p60 and 1080p30
- Realistic and personal conversations using Polycom Siren™22 and Polycom StereoSurround™ audio technology
- Share CAD drawings, movies, images, spreadsheets—and more—all in native resolution

Benefits

- Enjoy the Polycom UltimateHD™ experience with HD Video, HD Voice, and HD Content
- Incredibly sharp, bright screen and powerful stereo speakers – a perfect monitor for any desktop
- A second monitor output allows system to be used in a variety of different offices and applications
- High Definition video starting from just 512 kbps with standards-based H.264 High Profile
- Privacy feature allows for connection of third party headset and microphone
- Polycom Constant Clarity™ Technology gives users the best overall audio and video experience even with challenging network and environmental conditions

HDX 4500 Executive Desktop System 7200-09940-001

includes: P+C, People On Content licenses, 24" Widescreen Display, NA power cord, Keypad, Included cables: VGA, DVI, 3.5 mm stereo, and LAN (Maintenance Contract Required)



HDX4000 – PREMIER PERSONAL COMMUNICATION SOLUTION

Polycom® HDX® 4000 Series

Performance-engineered to deliver high-definition visual communication, the Polycom® HDX® 4000 series delivers the premium rich-media desktop system, redefining the personal communication experience.

High-Definition Visual Communication

Polycom HDX 4000 series systems leverage decades of design innovation and the legendary quality of Polycom to deliver the premium desktop system for rich-media communication. With a 20.1" video screen, an acoustically superior stereo sound system and modern, streamlined design, Polycom HDX 4000 series systems combine professional-level visual communication with full PC and Mac monitor functionality. Polycom HD Voice™ technology, delivered through dual, built-in microphones, enables users to hear remote participants' voices in stereo, while advanced four-way speakers deliver astonishingly life-like audio.

2200-24560-001 Executive Desktop System

HDX 4002 includes HD codec, P+C and PoC licenses. 20-inch wide screen display. Includes VGA, DVI, 3.5mm stereo, POTS and LAN cables (Maintenance Contract Required)



QDX6000 – QUALITY, PERFORMANCE, SIMPLICITY AND AFFORDABILITY

Polycom® QDX® 6000 Series

For organizations looking to greatly enhance productivity and communication quality, the Polycom QDX 6000 high resolution video conferencing system combines unprecedented performance at low bandwidths with simplified setup and ease of use.

- Gain affordable high resolution video starting as low as 256 kbps with a system optimized for lower bandwidths
- Maintain video and audio quality across your network or the public Internet with Polycom® Lost Packet Recovery™ (LPR) technology
- Enjoy crisp, natural voice clarity even when multiple parties are speaking with Polycom StereoSurround™
- Share content easily with the touch of a button using People+Content IP

7200-32784-001 Affordable Small Room System

QDX 6000 codec, Eagle Eye View with 3m cable. H.239, PPCIP, English remote and cable bundle (Component video, LAN, S-Video, RCA composite and dual audio and VGA monitor cable) (Maintenance Contract Required)

7200-30831-001 Affordable Small Room System

QDX 6000 codec, Eagle Eye QDX with 3m cable, 2 QDX microphones, H.239, PPCIP, English remote and cable bundle (Component video, LAN, S-Video, RCA composite and dual audio and VGA monitor cable) (Maintenance Contract Required)



RealPresence DESKTOP

Polycom RealPresence Desktop for Windows and Apple® Mac OS X is a powerful, enterprise-grade collaboration app that extends video communications beyond the typical conference room setting to mobile professionals.

- Share the industry's highest-quality audio, video, and content through standards-based protocols
- Automatically connect to room-based systems to control calls and share content without ever reaching for a cable or remote
- Quickly search existing corporate directories for ease-of-dialing and connect to other desktops, mobile, conference rooms, or immersive telepresence environments
- Protect call quality through Polycom Constant Clarity technology, which provides Internet users with a premium experience



- 5150-75109-001** Polycom RealPresence Desktop for Windows and Mac OS, 1 user (Includes 1 year of Premier Maintenance)
- 5150-75109-005** Polycom RealPresence Desktop for Windows and Mac OS, 5 users (Includes 1 year of Premier Maintenance)
- 5150-75109-025** Polycom RealPresence Desktop for Windows and Mac OS, 25 users (Includes 1 year of Premier Maintenance)
- 5150-75109-050** Polycom RealPresence Desktop for Windows and Mac OS, 50 users (Includes 1 year of Premier Maintenance)
- 5150-75109-100** Polycom RealPresence Desktop for Windows and Mac OS, 100 users (Includes 1 year of Premier Maintenance)

HDX ACCESSORIES

HDX Series Software:

- 5150-23912-001** HDX MPPlus Multipoint Software Option License. Allows for 4 site MP video calls. Available for HDX systems (4000, 4500, 7000, 8000 and 9000 Series).
- 5150-26946-001** Software option for "1080p Resolution", to enable 1080 encode/decode. Supported on HDX 7000 revC and revD; HDX 8000 revB; HDX 9000/9006 revB systems.
- 5150-63389-001** X RTV/CCCP license. Enables support for Microsoft RTV codec and direct calls to MS AV MCU. Available for HDX 9006, HDX 8000 rev B, HDX 7000 rev C or D, HDX 6000, HDX 4500, HDX 4000 rev C.
- 5150-63611-001** HDX TIP license. Enables support for Cisco TIP compatibility. Available for HDX 9000/9006 revB; HDX 8000 revB; HDX 7000 revC or revD; HDX 4500; HDX 4000 revC.



Accessories

- 1676-27233-001** Transport Case for HDX 6000/7000/8000. Hard case with casters, retractable handle and custom foam interior. Accommodates base unit, EagleEye, up to 50'/15m camera cable, mic array, H.320 module, remote control and applicable cables.
- 2200-23809-001** Ceiling Microphone array - Black "Primary". Includes 2ft/60cm drop cable, electronics Interface, wall plate with 10ft/3m & 50ft/15m plenum cable, RJ45(F)/Walta(M). For Real Presence Group, HDX & SoundStructure.
- 2200-23809-002** Ceiling Microphone array - White "Primary". Includes 2ft/60cm drop cable, electronics Interface, wall plate with 10ft/3m & 50ft/15m plenum cable, RJ45(F)/Walta(M). For Real Presence Group, HDX & SoundStructure.
- 2200-23810-001** Ceiling Microphone Array - Black "Extension" Kit: Includes 2ft/60cm drop cable, electronics interface, 25ft/7.6m plenum cable. For use with Ceiling Microphone Array 2200-23809-001. Platform dictates maximum number supported.
- 2200-23810-002** Ceiling Microphone Array - White "Extension" Kit: Includes 2ft/60cm drop cable, electronics interface, 25ft/7.6m plenum cable. For use with Ceiling Microphone Array 2200-23809-002. Platform dictates maximum number supported.
- 2200-65878-001** Stereo Speaker kit, 110-220v. Includes two Satellite speakers, subwoofer fuses for both 120 or 240v power source, speaker stands, 3.5mm to 2xRCA, 3.5mm to 3.5mm and speaker wire.
- 2201-52556-001** HDX remote control for use with HDX Series codecs, English version
- 2215-23327-001** HDX Mica Microphone Array. Contains one Microphone Array. Compatible with HDX Series, CX7000 and SoundStructure. Includes CLink 2 cable: 25ft/7.6M Walta to Walta.
- 2215-24143-001** Mounting bracket/shelf solution for EagleEye Director, EagleEye HD, EagleEye III, EagleEye View and EagleEye QDX Cameras. Mounts on the wall, other flat surfaces over 8in deep or flat screen displays greater than 1.5in thick.
- 2230-40600-025** SoundStation IP 7000 conference phone compatible with RealPresence Group Series and HDX Series. Includes 7.6m/25ft shielded Ethernet cable and 3m/10ft CLink2 cable.
- 2675-52709-001** Caster kit for packaged solutions, Polycom HDX Media Centers only, single and dual displays. Set of 4, 2 locking for use in front, 4".
- 8200-30070-006** Polycom Touch Control for use with HDX 6000, 7000, 8000, and 9000 series codecs with software version 3.1.1 or later and Touch Control 1.7 or later. Requires PoE network connection or optional external power supply (2200-42740-XXX).



Cameras

- 8200-09800-001** EagleEye 3 Camera. Compatible with QDX, CX7000 or HDX 6000 & 7000 main HDCI input and 8000 and 9000 series main and auxiliary HDCI inputs with software version 3.0.1 or later. Includes 3m cable and required power supply adaptor. NA power cord.
- 8200-09810-001** EagleEye 3 Camera. Compatible with QDX, CX7000 or HDX 6000 & 7000 main HDCI input and 8000 and 9000 series main and auxiliary HDCI inputs with software version 3.0.1 or later. Includes 10m cable and required power supply adaptor. NA power cord.
- 1465-52748-001** Auxiliary power supply for PowerCam (with 1457-50526-001 adapter), PowerCam Plus, EagleEye HD/III/View/QDX cameras 12Vdc/3.3A, 90-264VAC, NEGATIVE CENTER PIN, 2.5mm pin/5.5mm barrel. Replaces 1465-52621-036--DOES NOT INCLUDE AC POWER CORD
- 2200-82559-001** EagleEye Director, compatible with EE 2, EE 3, HDCI inputs and HDX software version 3.0.1 or later. Includes required power supply adaptor. NA power cord. (Maintenance Required)
- 7200-82631-001** EagleEye Director and one EagleEye 3 Camera, compatible with EE 2, EE 3, HDCI inputs and HDX software version 3.0.1 or later. Includes required power supply adaptor. NA power cord. (Maintenance Required)
- 7200-82632-001** EagleEye Director and two EagleEye 3 Camera, compatible with EE 2, EE 3, HDCI inputs and HDX software version 3.0.1 or later. Includes required power supply adaptor. NA power cord. (Maintenance Required)
- 2215-28454-001** Privacy cover for the EagleEye camera. Has the VC2 logo on the front when in the privacy position. Warranty not available for this item.
- 2215-30043-001** EagleEye View Main Camera. Compatible with QDX, CX7000 or HDX Series HDCI inputs. Microphones active only on HDCI input 1 and without CLink2 connection. Includes 3m cable.



SmartStart — THE VIDEO ENABLED ENTERPRISE IS HERE



Turnkey, Value Offerings

For the first time ever, incredible business value and competitive advantage through the video-enabled enterprise are available in affordable, turnkey offers.

Worry-Free Simplicity

It starts with RealPresence® Platform, the industry's most interoperable, scalable and secure UC platform. Add the new CloudAXIS™ Suite that lets users connect in seconds via a browser with secure B2B and B2C enterprise-grade video—plus the critical services to implement, maintain and drive quick adoption—and you have the breakthrough offerings that set a new benchmark for organizations yet to adopt video collaboration.

Work Face-to-Face with Anyone, Anywhere

- High-definition meetings with just a webcam and browser
- Point-and-click simplicity to add new participants to a video conference
- Meeting invites delivered automatically via IM or email
- Integrated global directory with Google Talk, Skype, Facebook and other UC contacts

Deployments Made Easy and Worry-Free

- Professional implementation by Polycom
- Included maintenance protects your investment with software upgrades and expert global support
- A consistent high-quality experience with fewer trouble tickets and escalations
- True ROI with adoption services that ensure your investment is leveraged company-wide

Video SmartStart 100

- Ideal for mid-size customers who are new to video
- Includes everything required to video enable up to 100 video users—including full RealPresence CloudAXIS Suite benefits
- Purchase everything via a single line item (CAPEX) or a three year (OPEX) lease
- Includes all necessary products, software, installation, maintenance and adoption services

2200-79000-200

RPCS 800s 5HD/10SD/15SVC; CloudAXIS 100 Sessions; DMA 7000, 50 Calls; RPRM, 100 Devices; RPAD ,25 Calls; Adoption Portal, 200 Users; Implementation Service; Premier, 1-Year Maintenance

2200-79000-300

RPCS 800s 5HD/10SD/15SVC; CloudAXIS 100 Sessions; DMA 7000, 50 Calls; RPRM, 100 Devices; RPAD,25 calls; Adoption Portal,200 Users; Implementation Service; Premier, 3-Years Maintenance

Video SmartStart 500

- Ideal for mid to large size organizations who are new to video or interested in adding multi-vendor support to an existing Microsoft Lync or IBM SameTime implementation
- Includes everything required to video enable up to 500 video users—including full RealPresence CloudAXIS Suite benefits
- Purchase everything via a single line item (CAPEX) or a three year (OPEX) lease
- Includes all necessary products, software, installation, maintenance and adoption services

2200-79000-000

RPCS 800s 10HD/20SD/30SVC; CloudAXIS 100 Sessions; DMA 7000, 500 Calls; RPRM, 500 Devices; RPAD, 50 Calls; Adoption Portal, 200 Users; Implementation Service; Premier, 1-Year Maintenance

2200-79000-100

RPCS 800s 10HD/20SD/30SVC; CloudAXIS 100 Sessions; DMA 7000, 500 Calls; RPRM, 500 Devices; RPAD, 50 Calls; Adoption Portal, 200 Users; Implementation Service; Premier, 3-Year Maintenance

SmartUpgrade

For customers who already have a Collaboration Server (RMX) and want all the benefits of RealPresence CloudAXIS Suite, video expansion to web/mobile/desktop, virtual meeting room simplicity, and SVC efficiency.

- Maximize the use of your Collaboration Servers with the newest SVC functionality, enabling up to 3X capacity increase, while expanding your video network to include the benefits of CloudAXIS Suite
- Purchase everything via a single line item (CAPEX) or a three year (OPEX) lease
- Includes all necessary products, software, installation, maintenance and adoption services

RealPresence COLLABORATION SERVERS – RMX SERIES

Polycom® RealPresence® Collaboration Server (RMX® Series)

- Lowest TCO – Experience 3x capacity increase with a simple software download, lower operating expenses with up to 50 percent less bandwidth utilization and help enable more people on more calls through dynamic resource allocation
- Interoperability without Compromise – Leverage existing and future UC investments without expensive gateways or extra boxes
- Highest Resiliency – Leverage the power of Polycom® Virtualization Management solutions for reliable, extreme scalability with 100 percent auto-failover
- Enterprise Quality Collaboration – Experience life-like collaboration through Polycom® Lost Packet Recovery™, video and audio upscaling, (Symmetric 1080p) and Polycom UltimateHD™ technologies
- Universal Collaboration – Remove barriers to interoperability with broad support for existing and emerging standards, applications, protocols and devices for seamless worldwide collaboration



RMX 1500 Dynamic Resource Allocation™ supports up to:

- 15 HD 1080p30 endpoints in CP • 10 HD 1080p60 endpoints in CP • 30 HD 720p endpoints in CP • 60 SD endpoints in CP • 90 CIF (H.264) endpoints in CP • 60 CIF (H.263) endpoints in CP • 90 SVC endpoints in CP • 80 HD 720p 2Mb endpoints in Video Switching (VSW) mode
- 360 VOIP and 120 PSTN audio endpoints • Supports a single conference without cascading of up to 360 audio or 90 video participants

RMX 2000 Dynamic Resource Allocation™ supports up to:

- 30 HD 1080p30 endpoints in CP • 20 HD 1080p60 endpoints in CP • 60 HD 720p endpoints in CP • 120 SD endpoints in CP • 180 CIF (H.264) endpoints in CP • 120 CIF (H.263) endpoints in CP • 180 SVC endpoints in CP • 160 HD 720p 2Mb endpoints in Video Switching (VSW) mode
- 720 VOIP and 400 PSTN audio endpoints • Supports a single conference without cascading of up to 720 audio or 180 video participants

RMX 4000 Dynamic Resource Allocation™ supports up to:

- 60 HD 1080p30 endpoints in CP • 40 HD 1080p60 endpoints in CP • 120 HD 720p endpoints in CP • 240 SD endpoints in CP • 360 CIF (H.264) endpoints in CP • 240 CIF (H.263) endpoints in CP • 360 SVC endpoints in CP • 320 HD 720p 2Mb endpoints in Video Switching (VSW) mode
- 720 VOIP and 400 PSTN audio endpoints • Supports a single conference without cascading of up to 720 audio or 180 video participants

VIDEO BORDER PROXY SERIES



Video Border Proxy 4555 Converged Network Appliance

The Polycom Video Border Proxy (VBP™) 4555 network appliance allows your organization to conduct video conferences clearly and securely by resolving the challenges caused by firewalls. Users of standards-based video endpoints, such as the high definition Polycom HDX series room and personal telepresence systems, can now remotely and securely communicate over video on the enterprise network. By performing video NAT at the IP address boundary, the VBP 4555 network appliance eliminates the risks of tunneling video and voice traffic from the network perimeter. With both an Ethernet WAN port and a software-selectable integrated T1 CSU/DSU interface, the VBP 4555 appliance can be utilized as a WAN access router or installed behind an existing WAN access router. The VBP 4555 enables remote locations using TLS to communicate with enterprise components using a single outbound port.

- Seamless resolution to challenges of communicating through firewalls
- Application layer gateway for H.323 video, and SIP
- Dynamic access control list for simplified set-up and operation
- Video and voice media routing via shortest possible path
- Call entry control to prevent congestion of prioritized traffic
- Traffic management capabilities including priority queuing, traffic shaping, and diffserv marking/policing
- Support for up to 3 Mbps of voice or video in any combination
- All-in-one network traversal solution for voice, video, and data networks
- Both T1 (4555 only) and Ethernet WAN access router
- Integrated four-port managed Ethernet switch with VLAN support
- Embedded LAN side gatekeeper supporting up to 15 registrant



Video Border Proxy 5300 Firewall/ NAT Traversal Units

- Versatile networking and security solutions that offer scalable options for future needs
- Ideal for organizations with multiple locations, including home workers
- A cost-effective approach that allows all members of the organization to call anyone

The Polycom VBP Series allows organizations to improve communication, speed decisionmaking, and accelerate execution by extending telepresence and video to users beyond their network. With the Polycom VBP Series, customers, partners, and remote colleagues are now easily and securely incorporated into an extended telepresence and video federation.

The Polycom VBP ST Series supports all standards-based telepresence solutions, video conferencing endpoints and multipoint conference bridges. Using standards-based firewall traversal, secure access is provided to users of Polycom Converged Management Application™ Desktop and Polycom HDX Series telepresence solutions without requiring a Virtual Private Network (VPN).

The Polycom VBP Series improve interaction quality by performing network address translation (NAT) at the IP address boundary, and forwarding video traffic in the shortest path. Performing video traffic management through prioritization, traffic shaping, call admission control, and DiffServ marking/policing, the Polycom VBP Series enables high quality and secure interactions to occur throughout the organization.

SCOPIA XT TELEPRESENCE



Immersive Lifelike Experience

Replicate the feeling of meeting in person. The Scopia XT Telepresence Platform incorporates state-of-the-art technology with support for full HD 1080p video, 48 kHz full band audio and up to 1080p60 (XT5000) or 1080p30 (XT1200) PC data sharing for an immersive lifelike experience.

Customizable and Flexible

The Scopia XT Telepresence Platform delivers an immersive telepresence experience tailored to the unique requirements of individual rooms and customer needs. Installed and configured by our worldwide network of expert partners, the Telepresence Platform provides a cost-effective and flexible deployment approach with optimal quality in a variety of conditions maintained through powerful calibration and setup tools.

Superior Interoperability

The Scopia XT Telepresence Platform combined with the Scopia Elite MCU delivers superior interoperability with telepresence systems from Cisco/Tandberg, Logitech/LifeSize and Polycom as well as with any standards-based video conferencing system for full video, audio and H.239 data collaboration.

Intuitive Apple iPad Control

The learning curve for using the Scopia XT Telepresence Platform is virtually eliminated with the Scopia Control Multi-Touch application for the Apple iPad device. First time users can initiate calls, control their Scopia XT Telepresence systems and moderate meetings with little training or introduction.

Breakthrough Pricing

The Scopia XT Telepresence Platform enables the creation of an exceptional immersive experience at a breakthrough price point. The Telepresence Platform stands out from the competition by delivering immersive video collaboration capabilities at a price far below most similar solutions.

Platform Components

- 3 x Telepresence licenses for the 3 Scopia XT5000 or XT1200 video conferencing systems, unlocking the Telepresence feature
- Camera support for the 3 cameras
- Control program app for the Apple iPad
- Calibration program available for Windows PC
- Scopia Management server with internal gatekeeper software license
- Scopia Desktop server software license
- System Integrator's Deployment Guide

Display Support

- 3 x HD video monitor display via HDMI codec interfaces 50", 55", 60", 65" suggested size; 65" recommended (video monitors must be identical - same model, manufacturer, size and resolution)
- HD data monitor display via HDMI main codec interface 42 - 50", up to 1920 x 1080

HD Cameras

- 3 x HD cameras
- Resolution: 1920 x 1080
- Locked PTZ position set
- Color and brightness calibration
- Fixed focus
- Simple Windows PC camera calibration tool for precise position setup

Video Resolution & Format

- 1080p (1920 x 1080) per codec @ 2 Mbps or higher
- 720p (1280 x 720) per codec @ 768 kbps or higher
- 16 x 9 aspect ratio

Video Standards

- H.261, H.263, H.263+, H.264 and H.239 data
- XT5000 platform: H.264 SVC and H.264 High Profile also supported

Audio Features

- 2 x Digital microphone array pods (cascading)
- Mute button
- Frequency response: 50 - 22,000 Hz
- All audio inputs and outputs are connected to the main codec

Audio Inputs

- XT5000: 1 x 3.5 mm (1/8") line in jack (analog / digital with mini-TOSLINK adapter)
- XT1200: 1 x SPDIF and 1 x 3.5mm (1/8") line in jack
- 1 x Microphone pod (RJ-11)

Audio Outputs

- 1 x HDMI
- XT5000: 1 x 3.5 mm (1/8") line out jack (analog / digital with mini-TOSLINK adapter)
- XT1200: 1 x SPDIF and 1 x 3.5 mm (1/8") line out jack

Let the Video Experts at Target help you configure a Scopia XT Telepresence Platform

SCOPIA XT5000 Room System

The SCOPIA XT5000 is Radvision's flagship product in the Scopia series of state-of-the-art video conferencing systems. The Scopia XT5000 is the only system available to incorporate dual 1080p/60fps live video and content, HD audio, H.264 High Profile, Scalable Video Coding Technology (SVC), and multi-party calling, making it the most advanced video conferencing system available today in its class. It is an all-in-one video conferencing solution that offers a highly intuitive user interface and a sleek and elegant design.

- Unique simultaneous HD 1080p/60fps for live video and content and CD-quality, 20 kHz audio
- H.264 High Profile provides ultimate bandwidth efficiency and H.264 Scalable Video Coding (SVC) offers high network error resiliency
- Optional embedded 9-way multi-party MCU
- iPad Multi-Touch control (optional)
- Participants can utilize SCOPIA Mobile and join video conferences via the latest mobile devices
- The XT5000 is a natural fit for today's businesses, not only for its ease of use, but also its modern design that complements any conference room



SCOPIA XT4200 Room System

The SCOPIA XT4200 offers outstanding value and cost-effective HD video communications with many features that are either unavailable or costly upgrades in other vendor offerings. The SCOPIA XT4200 is well equipped and includes dual 720p/60fps live video and content, HD audio, H.264 High Profile and Scalable Video Coding (SVC), dual display support and a wide angle PTZ camera. The user interface is designed for simplicity along with optional Multi-Touch control via the Apple iPad for enhanced capabilities.

- Dual 720p 60fps HD video, H.264 High Profile, H.264 SVC, dual display support, wide angle PTZ camera – are all included for cost effective video communications deployment
- RADVISION's award-winning iPad and iPhone applications (optional) enable instant, intuitive and effective control - no training required
- Camera Field of View (H): 16° - 70°, PAN / Tilt: ± 100° / ± 25° and Zoom: 5x (optical)
- Microphone –180° range with a Frequency response of 50 – 20,000 Hz
- SCOPIA solutions also offer integration with UC solutions from IBM, Microsoft and others



SCOPIA XT1200 Room System

Every SCOPIA XT1200 delivers full HD (1080p 30fps) video streams as standard so you don't have to compromise with lower quality video. The included high end PTZ camera supports 10x optical zoom and wide angle capability so you can see every detail as well as an entire group in the conference room. An additional 1080p camera can be used to send a separate 1080p video stream for complete visual coverage.

The SCOPIA XT1200 3-way microphone pod uses beam forming technology to put the focus on the speaker while isolating background noise. Two microphone pods can also be cascaded to cover larger rooms. 48 kHz (full band) audio encoding is used to ensure high clarity audio transmission with no loss of quality

- Dual full HD 1080p 30fps video streams including a 720p 60fps camera for the utmost experience
- Beam forming microphone pods and full band audio focuses on the speaker and isolates the noise
- Native PC resolution at 30fps for sharing presentations and even video clips with no quality loss
- Embedded HD Multi-party Conferencing - Meetings with up to 9 participants are more affordable than ever with the optional built-in MCU
- State of the Art Total Solution - With RADVISION's total solution, enjoy a seamlessly integrated visual communications system



SCOPIA XT Executive 240 24-Inch 1080p All-In-One Desktop System

The Scopia XT Executive 240 desktop VC system offers H.264 High Profile and H.264 Scalable Video Coding (SVC) and offers optional embedded multi-party conferencing with support for up to four remote participants.

The Scopia XT Executive 240 is also offered as an all-in-one video conferencing system combining the XT Executive's video capabilities with embedded 4-way multi-party conferencing, Scopia Desktop and Mobile conferencing for remote participants and BYOD initiatives, along with firewall traversal into an easily deployed all-in-one video conferencing and collaboration system.

The XT Executive is fully integrated with PC and Mac platforms, and a wireless remote is included, and for a Multi-Touch experience the XT Executive can be enabled for management by the Apple iPad.

- Integrated Desktop Video Conferencing & PC Display
- Embedded Multi-Party Conferencing (optional)
- Intuitive and Easy-to-Use



SCOPIA Control The Easy Way to Join Meetings

Join a meeting from the integrated room calendar with a single click. Through the intuitive touch screen interface of the iPad™, place calls, access your corporate directory and previous calls with no instructions required.

Control Your Scopia XT Series Room System or Telepresence Platform
Select video sources, control the PTZ camera, start the presentation and mute the Scopia room system microphone for privacy through the elegant iPad™ touch screen.

Moderate Your Meeting

Easily invite other meeting participants from your corporate directory. Control your conference through the participants list, mute the microphone, stop the camera or even disconnect other attendees. Change the video layout and number of videos for each participant. Start or pause recording or streaming, lock the conference, extend the meeting time or end the entire conference.

Cost Effective

Scopia Control runs on the iPad™ leveraging its Multi-Touch™ user interface, large screen and high quality graphics. Utilizing the iPad™ provides a cost effective control application that doesn't require an expensive, proprietary device.



SCOPIA Video Gateway for Microsoft™ Lync

Lync and Office Communicator users can seamlessly connect to any standards-based HD video conferencing system, telepresence system or infrastructure device. Users can merge their choice of conferencing systems with the simplicity of Lync and Office Communicator at the desktop.

- Enhanced Video Experience with Lync's Familiar Interface – Lync users can enjoy exceptional high quality video, continuous presence to view multiple users simultaneously and telepresence connectivity
- Robust enterprise security is also maintained through TLS and SRTP, while also providing firewall traversal for seamless connectivity across corporate boundaries
- Presence is displayed in the Lync contact list for any H.323 device, not just Lync enabled devices, allowing users to make smart and efficient communication choices directly from Lync
- Scalable and Affordable Architecture – The SCOPIA Video Gateway is based on a new architecture designed for cost effective and high-scale deployment designed to grow with unlimited scalability and dynamic resource allocation



SCOPIA XT Meeting Center

The Scopia XT Meeting Center is a premium HD room system integrating single or dual 55" 1080p displays in a specially designed cart for a simple and efficient implementation. The mobility of the cart enables the system to be used as a shared resource and is especially effective in education and healthcare environments to quickly create a high quality video meeting space.

The XT Meeting Center is powered by Avaya's flagship Scopia XT5000 – one of the only systems available in the market that includes dual 1080p/60fps live video and content, HD audio, H.264 High Profile, H.264 Scalable Video Coding (SVC) and optional embedded multi-party conferencing.

Designed with the end-user in mind, the Scopia XT Meeting Center's user interface uses the same intuitive design as Avaya's award-winning Scopia Mobile application, enabling instant, intuitive and effective control – with little or even no training required. For an enhanced experience, the XT Meeting Center is enabled for Multi-Touch control via the Apple iPad.

SCOPIA Elite 5000 MCU High Definition 1080p MCU

The Scopia Elite 5000 Series MCU utilizes advanced DSP technology in providing high definition multi-party conferencing. The Elite 5000's advanced media processing supports 1080p HD and provides advanced connectivity, dynamic resource allocation, and individual video layouts per participant yielding uncompromised video performance. The Scopia Elite 5000 Series can be configured for a range of HD continuous presence ports providing a line of systems to suit a variety of applications and budgets. Each system can also deliver four times the capacity with the 4X dynamic capacity option for enhanced definition endpoints. This maximizes capacity for mixed endpoint environments without any system configuration changes.

This flexible model offers significant value and fast return on investment with up to 120 video conferencing ports per system.

Scopia Elite was designed by users and administrators for usability and simplicity. On-screen information overlays, easy conference creation and entry through the enhanced video auto attendant and IVR make attending conferences simple. The industry leading management interface makes seemingly complicated tasks simple; users can view important statistics at a glance saving time, money and headache.



SCOPIA Elite 5230 MCU

3U ATCA chassis • 30 HD continuous presence ports • 120 HD video switching ports • 120 Enhanced Definition continuous presence ports

SCOPIA Elite 5215 MCU

3U ATCA chassis • 15 HD continuous presence ports • 60 HD video switching ports • 60 Enhanced Definition continuous presence ports

SCOPIA Elite 5115 MCU

1U chassis • 15 HD continuous presence ports • 60 HD video switching ports • 60 Enhanced Definition continuous presence ports

SCOPIA Elite 5110 MCU

1U chassis • 10 HD continuous presence ports • 40 HD video switching ports • 40 Enhanced Definition continuous presence ports

SCOPIA Elite 5105/20 MCU

1U chassis • 5 HD continuous presence ports • 20 HD video switching ports • 20 Enhanced Definition continuous presence ports

SCOPIA Elite 6000 Series MCU For Multi-Party Conferencing

The Scopia Elite 6000 Series MCU is Radvision's next generation platform for high definition multi-party conferencing. The Elite 6000 harnesses revolutionary processing power for demanding conferencing applications. Dual 1080p/60fps channels for video and content, simultaneous H.264 High Profile for bandwidth efficiency and H.264 Scalable Video Coding (SVC), along with multi-stream immersive telepresence connectivity deliver uncompromised multi-party collaboration. Hybrid architecture with powerful video accelerator

components delivers unmatched density and minimizes the power and rack space required. With dedicated processing for every connection, conference participants can choose their own video layouts with up to 28 participants displayed simultaneously, while panoramic layouts enable traditional video system interoperability with immersive telepresence

applications. Hybrid architecture with powerful video accelerator components delivers unmatched density with support for 40 full 1080p HD ports on a single 1U system, the highest processing performance available in the market, and minimizes the power and rack space required. Scopia's "Virtual MCU" management solution provides an intelligent, distributed multi-party conferencing architecture for maximum scalability and resiliency.



SCOPIA Elite 6140 MCU

20 HD 1080p60 Ports • 40 HD 1080p30/720p30 Ports • 80 HD 720p30 Ports with license option • 160 Enhanced Definition 480p30 Ports

SCOPIA Elite 6120 MCU

10 HD 1080p60 Ports • 20 HD 1080p30/720p30 Ports • 40 HD 720p30 Ports with license option • 80 Enhanced Definition 480p30 Ports

SCOPIA Elite 6110 MCU

5 HD 1080p60 Ports • 10 HD 1080p30/720p30 Ports • 20 HD 720p30 Ports with license option • 40 Enhanced Definition 480p30 Ports

SCOPIA Elite 6105 MCU

3 HD 1080p60 Ports • 5 HD 1080p30/720p30 Ports • 10 HD 720p30 Ports with license option • 20 Enhanced Definition 480p30 Ports

SCOPIA Pathfinder Firewall Traversal

Scopia PathFinder is a complete firewall and NAT traversal solution enabling secure connectivity between enterprise networks and remote sites. PathFinder maintains the security and advantages of firewall and NAT over networks and allows seamless integration with existing video conferencing systems and infrastructure. PathFinder handles Firewall and NAT problems without upgrading devices or compromising security.



- Works with Any Firewall, Endpoint and Gatekeeper – Solves near-end and far-end firewall issues allowing you to maintain existing security measures with no changes to existing firewalls
- All H.323 standards-based endpoints and gatekeepers are supported
- Easily deployed in the DMZ while the PathFinder client can be installed on any standalone computer in the network
- Hardened Linux operating system, client with built-in access control to prevent attacks by malicious devices, AES encryption and client authentication provide intensive security and peace of mind for the administrator
- A single PathFinder client deployed can support many individual endpoints
- PathFinder servers can be neighbored for additional capacity and backup • H.460 Compliant

NETWORK and DIGITAL VIDEO RECORDERS

HDVR EZ-IP Series NVR

- Linux Embedded
- Dual stream for managing bandwidth
- iPhone, iPad and Android mobile clients
- Web-based live viewer / playback
- Online GUI recording schedule
- Supports Megapixel and H.264 cameras
- Digital PTZ and multi-view
- Audio recording
- Up to 4 SATA HDD bays (8 & 16 Channel)
- RAID 0,1,5,10
- Real-time digital output and email alert
- Up to 128 channels remote live view
- Playback with intelligent search • Point of Sale (POS) Integration
- Digital watermark • NTP server synchronization
- **Storage sold separately**



- C2THDVREZIP4** 4-Channel NVR
- C2THDVREZIP8** 8-Channel NVR
- C2THDVREZIP16** 16-Channel NVR

2000 Series DVR



C2TDVR2004

4-Channel DVR

- 120fps • D1 • 1 Audio In, 1 Audio Out
- HDMI/VGA/BNC Output up to 1080p • Network Ready
- **Storage sold separately**

C2TDVR2008

8-Channel DVR

- 240fps • 1 Audio In, 1 Audio Out • 2 Channels D1 / 6 Channels CIF
- HDMI/VGA/BNC Output up to 1080p • Network Ready
- **Storage sold separately**

C2TDVR2016

16-Channel DVR

- 480fps • 16 Channels CIF • 1 Audio In, 1 Audio Out
- HDMI/VGA/BNC Output up to 1080p • Network Ready
- **Storage sold separately**

Hybrid DVR

Features common to all units shown below:

- IP, Analog or Hybrid Solution • Up to 64 Channels per Server
- Free Remote Software to Connect Multiple Servers
- Smart Guard Detection of 6 Events with 10 Instant Responses • Smart Search on Playback
- iPhone, iPad, Android Apps • Video Transcoding for Remote Viewing • Digital Watermark
- Instant Playback • Friendly GUI Interface • Privacy Mask • Counting Application
- Two-Way Audio • Auto Backup Feature • Edge Motion Integration • E-Map
- POS, I/O, LPR, Access Control Integration • Digital PTZ and Camera Multi-view



C2THDVR24K

HDVR Hybrid DVR 24K Chassis Only, Real Time View/Record on All Cameras, DVD Burner, Cube Case, Single Hot Swap Drive Bay, 1 Year Warranty, **STORAGE SOLD SEPARATELY**, (Must add analog video cards or IP license)

C2THDVR24K-R (Rack Mount Version)

HDVR Hybrid DVR 24K Chassis Only, Real Time View/Record on All Cameras, DVD Burner, Rackmount Case, Single Hot Swap Drive Bay, 1 Year Warranty **STORAGE SOLD SEPARATELY**, (Must add analog video cards or IP license)

C2THDVR58K

HDVR Hybrid DVR 58K Chassis Only, Real Time View/Record on All Cameras, DVD Burner, Cube Case, Single Hot Swap Drive Bay, 1 Year Warranty **STORAGE SOLD SEPARATELY**, (Must add analog video cards or IP license)

C2THDVR58K-R (Rack Mount Version)

HDVR Hybrid DVR 58K Chassis Only, Real Time View/Record on All Cameras, DVD Burner, Rackmount Case, 5 Bay Hot Swap, 1 Year Warranty **STORAGE SOLD SEPARATELY**, (Must add analog video cards or IP license)



C2THDVR110K

HDVR Hybrid DVR 110K Chassis Only, Real Time View/Record on All Cameras, DVD Burner, Cube Case, Single Hot Swap Drive Bay, 1 Year Warranty **STORAGE SOLD SEPARATELY**, (Must add analog video cards or IP license)

C2THDVR110K-R (Rack Mount Version)

HDVR Hybrid DVR 110K Chassis Only, Real Time View/Record on All Cameras, DVD Burner, Rackmount Case, 5 Bay Hot Swap, 1 Year Warranty **STORAGE SOLD SEPARATELY**, (Must add analog video cards or IP license)

C2THDVRPRO220K-R (Rack Mount Version)

HDVR Pro Series 220K Network Video Recorder, Real Time 30fps View/Record on All Cameras, 2U Rack Mount Case, 16GB Registered ECC RAM, Redundant 720W Power Supplies, Redundant OS Boot Drives and Dual Gigabit Network Ports, Hot Swap Drives and RAID Support, DVD Burner, HDMI, DVI and VGA Outputs, 1 Year Warranty, **STORAGE SOLD SEPARATELY**, (Must add analog video cards or IP license)

Analog Video Cards and IP Licenses

- C2THDVRA4** HDVR 4 Channel Analog Card / 120fps / D1
- C2THDVRA8** HDVR 8 Channel Analog Card / 240fps / D1
- C2THDVRA16** HDVR 16 Channel Analog Card / 480fps / D1
- C2THDVRIPL** HDVR Channel IP License with MegaPixel Support (Need 1 per IP camera)
- C2THDVRPOS** HDVR Series Ethernet-RS232 POS Capture Box and License (Need 1 per Cash Register)
- C2THDVRVGA** HDVR Secondary Monitor Support Card

Hard Drives Available

- 500GB
- 1TB
- 2TB
- 3TB
- 4TB

DOME CAMERAS

C2TDC521080IPOE

Full HD Indoor Dome
IP Camera with Infrared

- 1080P, up to 1920x1080 • H.264 • 30 fps,
- Digital Clarity CMOS with Removable ICR
- True Day Night • 1 Channel Alarm Input/ Output • 10/100 Base-T (RJ-45)
- Full Duplex Audio • ONVIF Compliant
- 2.8mm-10mm Vari-Focal Mega Pixel Lens,
- IR Distance 10-15M • Built In Microphone
- Flush Mountable • 12VDC or POE



C2TA71080IPOE

Full HD Vandal Proof
Indoor/Outdoor Mini Dome IP Camera

- 1080P, up to 1920x1080
- 30fps
- True Day Night with 1 Super Flux LED (6m Range)
- Full Duplex Audio
- 3.6mm Fixed Lens
- 12VDC or POE
- ONVIF Compliant



C2TA521080IPOE

Full HD Vandal Proof
Indoor/Outdoor Dome IP Camera
with Infrared

- 1080P, up to 1920x1080 • H.264 • 30 fps
- Digital Clarity CMOS with Removable ICR
- True Day Night • 1 Channel Alarm Input/ Output • 10/100 Base-T (RJ-45)
- Full Duplex Audio • ONVIF Compliant
- 2.8mm-10mm Vari-Focal Mega Pixel Lens
- IR Distance 10-15M • 12VDC or POE



C2TA55MPIPOE

5 Megapixel Vandal Proof
Indoor/Outdoor Dome IP Camera with Infrared

- 2592x1920 • H.264 • 10 fps
- Digital Clarity CMOS with Removable ICR
- True Day Night • 1 Channel Alarm Input/Output
- 10/100 Base-T (RJ-45)
- Full Duplex Audio
- 3.3mm-12mm Vari-Focal Mega Pixel Lens
- IR Distance 10-15M (12pcs IR LED)
- 12VDC or POE • ONVIF Compliant • IP66 / IK10 Rated



Installation Accessories

C2TA5WALL

Outdoor Wall Mount for C2TA5 Series Dome Cameras. Discreet Wire Pass-Through

C2TA5PEB

Ceiling Pendant Mount for C2TA5 Series Dome Cameras

C2TA5PEC

Ceiling Pendant Cap Only for C2TA5 Series Dome Cameras - Uses Standard 1/2" Thread Pipe for Custom Conduit Lengths

C2TA5OCM

Outdoor Corner Mount for C2TA5 Series Dome Cameras (Requires C2TA5WALL Mount)

C2TA5POB

Pole Mount for C2TA5 Series Dome Cameras (Requires C2TA5WALL Mount)

C2TA5BACKBOX

C2TA5 Universal Gang Box for A5 and A6 Cameras and Mounts. Dual Side and Single Rear Conduit Entry. IP66

C2TA5ADPT

C2TA5 Adapter Plate for Gang Box

INDOOR/OUTDOOR BULLET CAMERA

C2TBC321080IPOE

Full HD Bullet IP Camera with Infrared

- 1080P, up to 1920x1080 • H.264 • 30 fps • Digital Clarity CMOS with Removable ICR
- True Day Night • 10/100 Base-T (RJ-45) • Full Duplex Audio
- 3.3mm-12mm Vari-Focal Mega Pixel Lens • IR Distance 25M • 12VDC or POE • ONVIF Compliant



INDOOR/OUTDOOR ANTI-VANDAL DOME CAMERAS

C2TA52ULTRA

1/3" ClearNight Ultra
Vandal Proof
Low Light CCD

- 650 TVL • 0.0005 LUX
- 512X Auto Light Amplification
- 3rd Generation 3D Digital Noise Reduction
- AI VF 2.8-12mm • OSD • 2nd Video Out
- 12VDC/24VAC • 3 Axis Mount



C2TA52650

1/3" Low Light
Ultra High Resolution
CCD Day/Night
Vandal Proof Dome

- 650 TVL
- Advanced Noise Reduction
- 2.8mm - 10mm Varifocal Lens
- 3 Axis Mount • On Screen Menu
- 2nd Video Output • 12VDC/24VAC



C2TA52650IR

1/3" Low Light
Ultra High Resolution
CCD Day/Night
Vandal Proof Dome

- 650 TVL • 3 Axis Mount
- Advanced Noise Reduction
- 2.8mm - 10mm Varifocal Lens
- On Screen Menu • 2nd Video Output
- IR Distance 10-15M • 12VDC/24VAC



C2TA52MDNT

1/3" Midnight Vandal Proof Low Light CCD

- 650 TVL • 0.005 LUX • 512X Auto Light Amplification • 3rd Generation 3D DNR
- AI VF 2.8-12mm • OSD • 2nd Video Out
- 12VDC/24VAC • 3-Axis Bracket



C2TA52DYNA

1/3" Dynanight WDR Sensor Day/Night Vandal Proof Dome

- 650TVL • 0.01 Lux • True Wide Dynamic Range
- IR Distance 10-15M (12pcs IR LED)
- 2.8mm - 12mm Varifocal Lens • On Screen Menu
- True Day/Night • 12VDC/24VAC



Installation Accessories

C2TA5WALL

Outdoor Wall Mount for C2TA5 Series

C2TA5PEB

Ceiling Pendant Mount for C2TA5 Series

C2TA5PEC

Ceiling Pendant Cap Only for C2TA5 Series
Uses Standard 1/2" Thread Pipe for Custom
Conduit Lengths

C2TA5OCM

Outdoor Corner Mount for C2TA5 Series
(Requires C2TA5WALL Mount)

C2TA5POB

Pole Mount for C2TA5 Series Dome Cameras
(Requires C2TA5WALL Mount)

C2TA5BACKBOX

C2TA5 Universal Gang Box for A5 and A6
Cameras and Mounts. Dual Side and Single
Rear Conduit Entry. IP66

C2TA5ADPT

C2TA5 Adapter Plate for Gang Box

PAN, TILT AND ZOOM SPEED DOMES

C2TPTZ536

High Speed Day/Night PTZ Camera

- 432X (36X Optical)
- Day/Night Sony Super HAD CCD
- 530 TVL • On Screen Display Menu,
- 128 Presets • Outdoor Housing Included
- 24VAC Power Supply Included



C2TPTZ65010X

Mini High Speed Day/Night PTZ Camera

- High Resolution with IR Cut Filter
- 650 TVL • 10X Optical Zoom
- 128 Presets
- Privacy Zones
- 12VDC Power Supply Included



Installation Accessories

C2T563

PTZ Speed Dome Keyboard, 3 Axis Joystick with Illuminated LCD Screen, 12VDC, 1 Year Warranty

C2TACC53xOCM

Outdoor Corner Mount Bracket for C2TPTZ53X

C2TACC53xPOB

Pole Mount Bracket for C2TPTZ53X

C2TACC53xPEB

Pendant Mount Bracket for C2TPTZ53X

PAN, TILT ZOOM

C2TPTZ13MPIP

HD 1.3 Megapixel IP Outdoor PTZ Camera

- Up to 1280x960 • H.264,
- 1/3" Low Light Progressive Scan Megapixel CCD
- 1 Channel Alarm Input/Output
- 10/100 Base-T (RJ-45)
- Full Duplex Audio, Mini SD
- Includes Heater/Blower Housing
- 24VAC Included • ONVIF Compliant



C2TACCPTZ13OCM

Outdoor Corner Mount Bracket

C2TACCPTZ13POB

Pole Mount Bracket

C2TACCPTZ13PEB

Pendant Mount Bracket

MINI-BULLET INFRARED

C2TBC4720IPOE

Mini Bullet IP Camera with Infrared

- 720P Resolution
- 1280 x 720
- H.264
- 30 fps
- True Day Night with 2 Super Flux LED (15M Range)
- 3.6mm Fixed Lens
- 3 Axis Cable Through Bracket
- 12VDC or POE
- ONVIF Compliant



INDOOR/OUTDOOR BULLET CAMERAS

C2TBC32MDNT

Indoor/Outdoor Bullet Camera

- 1/3" 650TVL Midnight CCD
- 3rd Generation 3D DNR
- OSD • 2.8-12mm Lens
- 3-Axis Bracket • 2nd Video Out
- IP66/IK5 Rated • 12VDC/24VAC



C2TBC32650IR

Indoor/Outdoor Bullet Camera with Infrared

- 1/3" 650TVL Low Light CCD
- Advanced DNR • OSD
- Day/Night
- 10 Super Flux IR LED's (20-25M)
- 2.8-12mm Lens
- 3-Axis Bracket
- 2nd Video Out
- IP66/IK5 Rated • 12VDC/24VAC



C2TBC32DYNA

Indoor/Outdoor Bullet Camera

- 1/3" Dynanight 650TVL WDR CCD • True Wide Dynamic Range
- Advanced DNR • OSD • Day/Night • 10 Super Flux IR LED's (20-25M) • 2.8-12mm Lens • 3-Axis Bracket • 2nd Video Out
- IP66/IK5 Rated • 12VDC/24VAC

INDOOR/OUTDOOR IR DOME CAMERA

C2TA8600

Indoor/Outdoor IR Dome Camera

- 600TVL • 720p X 480p resolution
- 3.6mm Fixed Lens • 12VDC
- 10 SuperFlux IR LED's w/45 ft. Range
- Indoor/Outdoor Anti-Vandal Dome
- 3 Axis Ball/Socket Design • IP66 / IK6 Rated



INDOOR DOME CAMERA

C2TDC52650

1/3" Low Light Ultra High Resolution CCD Day/Night Indoor Dome

- 650 TVL • Advanced Noise Reduction
- 2.8mm - 10mm Varifocal Lens • 3 Axis Mount
- On Screen Menu • 2nd Video Output
- Flush Mountable • 12VDC



Power Supplies

C2TACC731

1250mA 12 VDC power adaptor

C2TACC24VAC

24 VAC Class 2 20VA with LED power transformer

C2TACC761

24VAC to 12VDC Power Converter, 1 Year Warranty

C2TACC733

4 Channel Regulated 12VDC Power Supply, 4 Amp - PTC Protection

C2TACC734

8 Channel Regulated 12VDC Power Supply, 4 Amp - PTC Protection

C2TACC735

16 Channel Regulated 12VDC Power Supply, 8 Amp - PTC Protection

C2TACC740

High Power - 8 Channel Regulated 12VDC Power Supply, 8 Amp - PTC Protection

C2TACC741

High Power - 16 Channel Regulated 12VDC Power Supply, 17.2 Amp - PTC Protection

C2TACC736

8 Channel Regulated 24VAC Power Supply, 4 Amp - PTC Protection

C2TACC737

16 Channel Regulated 24VAC Power Supply, 8 Amp - PTC Protection

Accessories

C2TBALP3

Pair of Passive Baluns, 1000 ft.

C2TBAL16R

Video Balun - 16 Port Transceiver Hub (DVR side)

C2TACC800

Super High Gain Microphone, 12VDC

C2TACC750SM

Male 12VDC Jumper to connect camera to power supply (For use with all 12VDC cameras)





DS-7604NI-SE/P-500GB

4-Channel NVR

- 4-Channel IP Video Input
- 500GB Hard Disk Drive
- Decoding Resolution of Up to 5 Megapixels
- Synchronous Playback
- Built-in 4-Port 10/100 Switch
- 2 USB 2.0 Interfaces
- 4 Alarm In
- 1 Alarm Out



DS-7608NI-SE/8P-1TB

8-Channel NVR

- 8-Channel IP Video Input
- 1TB Hard Disk Drive
- Decoding Resolution of Up to 5 Megapixels
- Synchronous Playback
- Built-in 4-Port 10/100 Switch
- 2 USB 2.0 Interfaces
- 4 Alarm In
- 1 Alarm Out



DS-2CD2012-I 4MM

720P Outdoor Bullet Camera

- 1.3 MP High Resolution
- HD 720p Real-Time Video
- IP66 Rating • IR Range up to 30M
- Lens: 4mm @ F2.0 • True Day/Night
- Operates on PoE or 12VDC
- 0.028 Lux @ F2.0
- 0 Lux with IR



DS-2CD2032-I 4MM

1080P Outdoor Bullet Camera

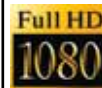
- 3 MP High Resolution
- Full HD 1080p Real-Time Video
- IP66 Rating • IR Range up to 30M
- Lens: 4mm @ F2.0 • True Day/Night
- Operates on PoE or 12VDC
- 0.19 Lux @ F2.0 • 0 Lux with IR



DS-2CD2112-I 4MM

720P Outdoor Dome Camera

- 1.3 MP High Resolution
- HD 720p Real-Time Video
- True Day/Night Auto Switch • IP66 Rating
- IR Range up to 30M • Vandal-Proof Housing
- Lens: 4mm @ F2.0
- 0.028 Lux / 0 Lux with IR
- Operates on PoE or 12VDC



DS-2CD2132-I 4MM

1080P Outdoor Dome Camera

- 3 MP High Resolution
- Full HD 1080p Real-Time Video
- True Day/Night Auto Switch
- IP66 Rating • IR Range up to 30M
- Vandal-Proof Housing • Lens: 4mm @ F2.0
- 0.19 Lux / 0 Lux with IR
- Operates on PoE or 12VDC



DS-2CE55C2N
720 TVL PICADIS
Outdoor IR

Dome Camera

- 1/3" PICADIS
- 1.3MP Sensor:
1280(H) x 960(V) Effective Pixels
- 720 TVL Horizontal Resolution
- True Day/Night • 20m IR Distance
- 2.8/3.6/6mm Fixed Lens, 0.1 lux/F1.2
- Smart IR, high dynamic range
- Wide operating temperature range
- IP66 Weatherproof

DS-2CD2732F-I
3.0MP VF IR
Dome Network
Camera

- 3 megapixel (2048 x 1536) high resolution
- Full HD1080p real-time video
- IR LEDs: up to 20m
- DWDR & 3D DNR & BLC
- Support onboard storage (up to 64GB)
- (-S) Audio I/O, Alarm I/O
- IP66 • Vandal-proof



DS-2CD2632F-I

3.0MP VF IR Bullet Network Camera

- Up to 3 megapixel (2048 x 1536) resolution
- Full HD1080p real-time video
- Vari-focal lens
- IR LEDs (up to 30m)
- DWDR & 3D DNR & BLC
- IP66
- Support onboard storage (up to 64GB)
- (-S) Audio I/O, Alarm I/O



DS-2DF7286-AEL
2 MP 30X Network
IR PTZ Dome Camera

- 1/3" Progressive Scan CMOS
- 30X optical zoom, 16X digital zoom
- Smart Tracking, Defog, ROI encoding, HLC
- Smart IR, 120m IR distance
- 3-Streams
- True Day/Night, 3D DNR, Digital WDR
- 3D intelligent positioning
- 24VAC / High-PoE power supply

DS-2DF1-402
4 Inch Network High
Speed Dome

- 1/4" Sony CCD
- High resolution of 540TVL (Color) and 600TVL (B/W)
- 12x optical zoom, 16x digital zoom
- Minimum illumination Color: 0.2Lux/ (F1.6 AGC ON) B/W: 0.02Lux/(F1.6 AGC ON)
- True Day/Night
- PoE (802.3at)



Hikvision Digital Technology Co., Ltd. is one of the world's leading suppliers of video surveillance products and solutions.

Hikvision's product offerings include hybrid DVRs, NVRs, standalone DVRs, digital video servers, compression cards, high-definition IP cameras, and speed domes, so if you don't see the Hikvision product that you're looking for call the Security Experts at Target and we'll get it for you!

NETWORK VIDEO RECORDER 4-CAMERA BUNDLE



NV200T3/4X1351

Network Video Recorder with 3TB of Storage and 4 WV-SF135 HD Dome Cameras

NVR Features:

- H.264, MPEG-4, and JPEG multi formats • Up to 16 network cameras can be connected and recorded.
- Simple mouse operation by new GUI without the use of PC • Quick intuitive search with calendar and timeline
- Live images from up to 16 cameras can be displayed simultaneously
- Supports the Full HD output (HDMI) that can display recorded images and live images in high definition
- Real Time Face Matching function by matching registered face images with a face displayed on live images
- Various alarm sources include 9x Terminal inputs, 16x Camera alarm, Panasonic Alarm Protocol. Flexible alarm actions include Alarm recording, E-mail notification, Alarm message, Camera positioning, Terminal output, Panasonic alarm protocol output, Buzzer, and Indicator
- Camera Control: Pan/Tilt, Zoom, Focus, Brightness, Preset Position, Auto mode (depending on camera model)
- Filtered Search: Time & Date, Event Type, Camera number, Timeline • Recorded images can be downloaded to a PC
- Downloadable viewer software allows playback of images downloaded from the recorder
- Built-in network interface (10Base-T / 100Base-TX / 1000Base-T) for recording and client access
- Up to 2 clients can monitor image and control WJ-NV200 simultaneously • Up to 2 HDDs can be installed (3.5" SATA HDD)
- Audio from the i-PRO network cameras can be recorded and played back, G.726 (ADPCM) 32 kbps
- Multi-recorder, Multi-site system can be made with optional WV-ASM100 i-PRO Management Software

HD Dome Network Camera Features

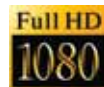
- 1.3 MP MOS Sensor • Low-Profile Design • UniPhier LSI Chip • Electronic Sensitivity Enhancement • HD Resolution of 1280 x 960 at 30 fps
- VIQS Technology / 2x Extra Zoom • Adaptive Black Stretch Technology • 3D Digital Noise Reduction • Minimum Illumination of 0.6 Lux (B&W)
- Privacy Masking (Up to 2 Zones) • Video Motion Detection (4 Areas) • Power Over Ethernet / IEEE 802.3af
- JPEG images can be viewed on smartphones via the internet



WV-SC588
Super Dynamic
Full HD
Indoor/Outdoor
Day/Night
PTZ Dome
Network Camera



- High reliability and smooth pan/tilt mechanism
- Dome cover less and Dust-resistant design
- 30x Optical Zoom, 90x Ex Optical Zoom
- Advanced Auto Tracking
- High Resolution(1080p Full HD images up to 30fps)
- High sensitivity with Day/night function (IR)
- Face Detection with Super Dynamic Technology
- Fog and Smoke Reduction
- 2-area VIQS (Variable Image Quality on Specified Area)
- Various Transmission Modes
- 32 areas privacy zone masking
- SDXC Memory card edge recording
- Smartphone, Tablet PC monitoring
- Functions of motion detection, sound detection and alarm detection



WV-SF138
Compact Size Full HD
Dome Network Camera



- Wide angle view but very low lens distortion
- High Resolution (1080p Full HD images up to 30fps)
- Face Detection with Super Dynamic Technology
- Fog and Smoke Reduction • Smartphone, Tablet PC monitoring
- 2-area VIQS (Variable Image Quality on Specified Area) • Cropping
- Various Transmission Modes • SDXC Memory card edge recording

BB-HNP17A
PC Recording Software

- Images can be recorded simultaneously from up to 64 cameras
- Lets you use a PC at a distant location for recording and playing images with voices
- Record and Play MPEG4 and MJPEG Images with Audio
- Automatic Backup • Advanced Motion Detection Record
- Advanced Time Record and Search • Remaining HDD Capacity Limit
- Camera List • Works with Windows PCs only



NETWORK CAMERAS

WV-SC384

HD Dome Network Camera

- 1.3 MP MOS Sensor
- 18x Optical Zoom
- 36x Extra Zoom with V Function
- HD Resolution of 1280 x 960 at 30 fps
- Adaptive Black Stretch
- UniPhier LSI Chip
- Sensitivity of 0.5 lux (B&W) at F/1.6
- Privacy Masking (Up to 2 Zones)
- Adaptive Digital Noise Reduction
- Power Over Ethernet / IEEE 802.3af • Video Motion Detection
- Automatically detects & focuses on human faces
- JPEG images can be viewed on smartphones via the internet



WV-SF132

VGA Dome Network Camera

- 320,000 Pixel MOS Sensor
- Low-Profile Design
- UniPhier LSI Chip
- Electronic Sensitivity Enhancement
- VGA Resolution of 640 x 480 at 30 fps
- VIQS Technology
- Adaptive Black Stretch Technology • 3D Digital Noise Reduction
- Minimum Illumination of 1.3 Lux (B&W)
- Privacy Masking (Up to 2 Zones)
- Video Motion Detection (4 Areas)
- Power Over Ethernet / IEEE 802.3af
- JPEG images can be viewed on smartphones via the internet



WV-SF135

HD Dome Network Camera

- 1.3 MP MOS Sensor
- Low-Profile Design
- UniPhier LSI Chip
- Electronic Sensitivity Enhancement
- HD Resolution of 1280 x 960 at 30 fps
- VIQS Technology / 2x Extra Zoom
- Adaptive Black Stretch Technology
- 3D Digital Noise Reduction
- Minimum Illumination of 0.6 Lux (B&W)
- Privacy Masking (Up to 2 Zones)
- Video Motion Detection (4 Areas)
- Power Over Ethernet / IEEE 802.3af
- JPEG images can be viewed on smartphones via the internet



WV-ST162

SVGA Pan/Tilt Network Camera

- 1.3 MP MOS Sensor
- UniPhier LSI Chip
- SVGA Resolution of 800 x 600
- Adaptive Black Stretch
- Electronic Sensitivity Enhancement
- Pan & Tilt
- Preset Map Shot Function
- 3D Digital Noise Reduction
- Interactive Audio Communication
- Minimum Illumination of 0.5 Lux (B&W)
- Privacy Masking (Up to 2 Zones)
- Video Motion Detection (4 Areas)
- SDHC/SD memory card slot provides backup in case of network failure



WV-ST165

HD Pan/Tilt Network Camera

- 1.3 MP MOS Sensor
- UniPhier LSI Chip
- HD Resolution of 1280 x 960
- Adaptive Black Stretch / Easy to Install
- Electronic Sensitivity Enhancement
- Pan & Tilt
- Preset Map Shot Function
- 3D Digital Noise Reduction
- 2-Way Audio with Built-In Microphone
- Minimum Illumination of 0.5 Lux (B&W)
- Privacy Masking (Up to 2 Zones)
- Video Motion Detection (4 Areas)
- SDHC/SD memory card slot provides backup in case of network failure



WV-SW172

Outdoor SVGA Pan/Tilt Network Camera

- 1.3 MP MOS Sensor
- UniPhier LSI Chip
- SVGA Resolution of 800 x 600
- Adaptive Black Stretch Technology
- Pan & Tilt
- Preset Map Shot Function
- 3D Digital Noise Reduction
- 2-Way Audio with Built-In Microphone
- Minimum Illumination of 0.5 Lux (B&W)
- Privacy Masking (Up to 2 Zones)
- Video Motion Detection (4 Areas)
- IP55 Rated Water & Dust Resistance
- SDHC/SD memory card slot provides backup in case of network failure



WV-SW174W

Wireless Outdoor HD Pan/Tilt Network Camera

- 1.3 MP MOS Sensor • UniPhier LSI Chip
- HD Resolution of 1280 x 960
- Adaptive Black Stretch Technology
- Pan & Tilt • Preset Map Shot Function
- Wi-Fi Protected Setup / Wireless LAN
- 3D Digital Noise Reduction
- 2-Way Audio with Built-In Microphone
- Minimum Illumination of 0.5 Lux (B&W)
- Privacy Masking (Up to 2 Zones)
- Video Motion Detection (4 Areas)
- IP55 Rated Water & Dust Resistance
- SDHC/SD memory card slot provides backup in case of network failure



WV-SW175

Outdoor HD Pan/Tilt Network Camera

- 1.3 MP MOS Sensor
- UniPhier LSI Chip
- HD Resolution of 1280 x 960
- Adaptive Black Stretch Technology
- Pan & Tilt
- Preset Map Shot Function
- 3D Digital Noise Reduction
- 2-Way Audio with Built-In Microphone
- Minimum Illumination of 0.5 Lux (B&W)
- Privacy Masking (Up to 2 Zones)
- Video Motion Detection (4 Areas)
- IP55 Rated Water & Dust Resistance
- SDHC/SD memory card slot provides backup in case of network failure



NETWORK VIDEO RECORDERS



WJ-NV200 Network Video Recorders

- H.264, MPEG-4 and JPEG multi format
- Up to 16 network cameras can be connected and recorded.
- Quick setup by automatic camera detection and simple setup wizard without the use of PC
- Simple mouse operation by new GUI without the use of PC
- Supports the Full HD output (HDMI)
- Real Time Face Matching function by matching registered face images with a face displayed on live images
- ONVIF compliant model

WJ-NV200/2000T2 Network Video Recorder with 2TB Storage

WJ-NV200/4000T2 Network Video Recorder with 4TB Storage



WJ-ND400 Series Network Video Recorders

- MPEG-4 and JPEG multi format • 200 Mbps high throughput
- Up to 64 network cameras can be connected without extra license fee
- Panasonic camera control: Pan/Tilt, Zoom, Focus, Brightness, Preset Position, Auto • 2x, 4x Digital zoom (Live/Playback)
- Recorded images can be downloaded to a PC
- Up to 16 clients can monitor images and control WJ-ND400 simultaneously
- 2x built-in network interfaces (10Base-T / 100Base-TX / 1000Base-T)
- Up to 9 Serial ATA HDDs can be installed & optionally expand to 54 slots

WJ-ND400/2000T2 NVR with 1 Removeable 2TB HDD

WJ-ND400/2000T2 NVR with 2 Removeable 2TB HDD (4TB Total)

NETWORK CAMERAS

WV-SF548

Super Dynamic

Full HD Vandal Resistant Dome

- 3.1 MP MOS Sensor
- UniPhier LSI Chip
- Full HD Resolution of 1920 x 1080
- Super Dynamic Technology
- Cropping Function / Auto Back Focus
- 2-Areas VIQS / Adaptive Black Stretch
- Electronic Sensitivity Enhancement
- 3D Digital Noise Reduction • Minimum Illumination of 0.06 Lux (B&W)
- Privacy Masking (Up to 2 Zones) • Video Motion Detection (4 Areas)
- SD/SDHC memory card slot



WV-SF549

Super Dynamic

Full HD Vandal Resistant Dome

- 3.1 MP MOS Sensor
- UniPhier LSI Chip
- Full HD Resolution of 1920 x 1080
- Super Dynamic Technology / 2-Way Audio
- Cropping Function / Auto Back Focus
- 2-Areas VIQS / Adaptive Black Stretch
- Electronic Sensitivity Enhancement
- 3D Digital Noise Reduction • Minimum Illumination of 0.06 Lux (B&W)
- Privacy Masking (Up to 2 Zones) • Video Motion Detection (4 Areas)
- SD/SDHC memory card slot



WV-SW352

Super Dynamic

Vandal Resistant

SVGA Fixed Dome Network Camera

- 1.3 MP High Sensitivity MOS Sensor
- 12x Optical Zoom / UniPhier LSI Chip
- Resolution of 800 x 600 at 30 fps
- Sensitivity of 0.04 lux (B/W) at F1.6
- Super Dynamic & Adaptive Black Stretch
- Face Super Dynamic / VIQS Technology
- WDR Technology / Motion Detection
- Adaptive Digital Noise Reduction
- Power over Ethernet (PoE) IEEE 802.3af
- IP66- & IK10-Rated / For Outdoor Use



WV-SW355

Super Dynamic HD

Vandal Resistant Fixed

Dome Network Camera

- 1.3 MP High Sensitivity MOS Sensor
- 12x Optical Zoom / UniPhier LSI Chip
- Resolution of 1280 x 960 at 30 fps
- Sensitivity of 0.05 lux (B/W) at F1.6
- Super Dynamic & Adaptive Black Stretch
- Face Super Dynamic / VIQS Technology
- WDR Technology / Motion Detection
- Adaptive Digital Noise Reduction
- Power over Ethernet (PoE) IEEE 802.3af
- IP66- & IK10-Rated / For Outdoor Use



WV-SW559

Super Dynamic

Full HD Vandal Resistant

Dome Network Camera

- 3.1 MP MOS Sensor / UniPhier LSI Chip
- Full HD Resolution of 1920 x 1080
- Super Dynamic Technology
- Cropping Function / Auto Back Focus
- 2-Areas VIQS / Adaptive Black Stretch
- 2-Way Audio with Built-In Microphone
- 3D Digital Noise Reduction
- Minimum Illumination of 0.06 Lux (B&W)
- Privacy Masking (Up to 2 Zones)
- Video Motion Detection (4 Areas)



WV-CW974

Weather Proof SDIII Color

Dome Camera with

Advanced Auto Tracking

- Advanced Auto Track with template matching algorithm
- IP66 Rated Weather Proof Structure
- Super Dynamic III Camera with 160x Dynamic Range
- 30x Optical Zoom and 300x including Digital Zoom
- 400 deg/sec Panning Speed
- Enhanced Processing of Natural Color



NETWORK CAMERAS

WV-SW314 Super Dynamic Weather Resistant HD Network Camera

- 1.3 MP MOS Sensor
UniPhier LSI Chip
- HD Resolution of 1280 x 960 at 30 fps
- 7.2x Extra Optical Zoom (VGA)
- Minimum Illumination of 0.2 Lux (B&W)
- Face Super Dynamic Range
- VIQS / Adaptive Black Stretch
- 3D Digital Noise Reduction • Privacy Masking (Up to 2 Zones)
- Video Motion Detection (4 Areas)
- IP66-Rated Weather-Resistant Housing



WV-SW316 Super Dynamic Weather Resistant HD Network Camera

- 1.3 MP MOS Sensor
UniPhier LSI Chip
- HD Resolution of 1280 x 960 at 30 fps
- 6.4x Extra Optical Zoom (VGA)
- Minimum Illumination of 0.05 Lux (B&W)
- Face Super Dynamic Range
- VIQS / Adaptive Black Stretch
- Auto Back Focus / 2-Way Audio • Privacy Masking (Up to 2 Zones)
- Video Motion Detection (4 Areas)
- IP66 Rated Water & Dust Resistance



WV-CS584 Super Dynamic 6 Day/Night PTZ Dome

- 36x Optical Zoom
- 650 TVL Resolution
- Sensitivity of 0.04 lux (B&W) at F1.4
- 360° Panning / No Blind Spots
- Adaptive Digital Noise Reduction
- Auto Image Stabilizer
- Auto Tracking
- Pan/Tilt speed of up to 400°/s
- Scene Change Detection
- RS485 Data Communication
- Privacy Masking up to 8 Areas
- Motion Detection up to 4 Zones



WV-CW504S Surface Mount Super Dynamic Vandal Resistant Fixed Dome

- ### WV-CW504F Flush Mount Super Dynamic Vandal Resistant Fixed Dome
- 1/3" Interline Transfer CCD
 - Focal Length - 3.8-8mm
 - Varifocal lens (CS-mount) with 2x zoom
 - Resolution - 650TVL (Color)
 - Adaptive Black Stretch
 - i-VMD for Video Motion Detection
 - Auto Back Focus
 - Dust / Moisture / Vandal Resistant • IP66 Rated
 - 0.01 lux in B&W and 0.1 lux in color mode



WV-CF504 Super Dynamic 5 Fixed Dome Camera

- Super Dynamic 5 Technology
- Minimum Illumination of 0.01 lx (B&W)
- 650 TVL Resolution
- Auto Back Focus
Adaptive Black Stretch
- 3.8 to 8mm Varifocal Auto Iris Lens
- Electronic Sensitivity
Enhancement
- Intelligent-Video Motion Detection
- Adaptive Digital Noise Reduction
- 3D Color Conversion Function
- 3-Way Hinge / Easy Installation



WV-CF344 Day/Night Indoor Fixed Dome Camera

- 1/3" Interline Transfer CCD
- Resolution up to 650 TVL
- 2x digital zoom
- Adjustable PTZ angle functions
- 3-way hinge (horizontal, vertical and swivel rotation)
- Low-Light Sensitivity (0.05 lux in B&W)
- Adaptive Black Stretch Technology
- Auto-Image Stabilizer
- Adaptive Digital
Noise Reduction
- 24 VAC or 12 VDC



WV-CF354 Day/Night Indoor Fixed Dome Camera

- 1/3" Interline Transfer CCD
- Resolution up to 650 TVL
- 2x digital zoom
- Adjustable PTZ angle functions
- 3-way hinge (horizontal, vertical and swivel rotation)
- Low-Light Sensitivity (0.05 lux in B&W)
- Adaptive Black Stretch Technology
- Auto-Image Stabilizer
- Auto Back Focus Technology
- Adaptive Digital Noise Reduction
- 24 VAC or 12 VDC



WJ-HD716 16-Channel H.264 DVR

- Intelligent Video Motion Detection (i-VMD) with Super Dynamic 5 Link (SD5Link) to share metadata information between cameras and the recorder
- Dual HDMI video outputs for true 1080i HD playback
- Four front accessible hard disk drive slots
- H.264 / UniPhier System LSI • 1.0TB Storage Capacity
- SD5Link (Super Dynamic 5 Link) • i-VMD Function
- 2x 960 ips Monitor • Remote Monitoring via IE
- 5x DVR Cascade Support • SD/SDHC Card Slot



TARGET IS YOUR BEST SOURCE FOR PANASONIC

TOLL FREE – 800-873-5528 • LOCAL – 301-296-9400 • FAX – 301-296-9494

NETWORK and DIGITAL VIDEO RECORDERS

ZIPKIT4D1 Plug & Play Network Video Recorder and IP Camera Kit

NVR Features

- Video Out: 1 HDMI®, 1 VGA, 1 CVBS • Plug & play feature with Speco's IP cameras
- Dual network ports for isolating IP camera network and remote network traffic
- Network video recorder with free Speco DDNS server
- Digital Deterrent® for triggering audio message via motion detection or sensor
- Full HD (1920 x 1080) recording and playback
- Built-in S.M.A.R.T. Technology (Self-Monitoring, Analysis and Reporting Technology for HDD) • Remote monitoring / recording / playback / configuration / software upgrades and PTZ control via internet
- Supports multiple PC based browsers such as Internet Explorer, Google Chrome, Firefox and Safari
- IR remote control and mouse included • PC and MAC® compatible



Camera Features (Includes 4 Cameras)

- 3.7mm fixed lens • Real-time video up to 30fps • PoE IEEE 802.3af • Dual streaming • Weather/vandal resistant • IP66 compliant

NSP Series NS Plug & Play Network Video Recorder with Built-In PoE

N4NSP 4 Channel Network Video Recorder with 4 Channel Built-in PoE

N8NSP 8 Channel Network Video Recorder with 8 Channel Built-in PoE

N16NSP 16 Channel Network Video Recorder with 8 Channel Built-in PoE

- Video Out: 1 HDMI, 1 VGA, 1 CVBS • 8 and 16 channel NVR supports up to 5MP resolution on channel 1
- 4 channel NVR supports up to 3MP resolution on channel 1 • Plug & play feature with Speco's OnSIP/VIP/ZIP cameras • ONVIF support
- Dual network ports for isolating IP camera network and remote network traffic • Supports all H.264 compression profiles
- Network video recorder with free Speco DDNS server • Digital Deterrent® for triggering audio message via motion detection or sensor
- 2-way audio communication • Full HD (1920 x 1080) recording and playback • Supports wireless access point for viewing and configuration
- Built-in S.M.A.R.T. Technology (Self-Monitoring, Analysis and Reporting Technology for HDD)
- Built-in PoE provides power to IP cameras • 4/8/16 channel selectable local or IP camera audio recording
- Easy firmware upgrade by USB port or network • Remote monitoring / recording / playback / configuration / upgrades & PTZ control via internet
- Supports multiple PC based browsers such as Internet Explorer, Google Chrome, Firefox and Safari • Network accessible via SpecoTech Multi-Client Software, SecureGuard® CMS and Speco Player Mobile Viewer • PC and MAC® compatible



Available in 4, 8 and 16 Channel Configurations with HDD from 1TB to 6TB – Call for Complete Details

Also Available in Wall Mount Configurations – Call for Complete Details

DS Digital Video Recorder with 960H Real-Time Recording

D8DS 8 Channel 960H Digital Video Recorder

D16DS 16 Channel 960H Digital Video Recorder

- Video Out: 1 HDMI, 1 VGA, 1 BNC, 1 Spot
- Networkable DVR with free Speco DDNS server
- Easy and simple graphical user interface • Digital Deterrent® for triggering audio message via motion detection or sensor • 2-way audio communication • Programmable recording on motion detection, sensor, schedule, continuous and manual • Real-time recording rate at 240FPS (8 Ch.) / 480FPS (16 Ch.) at 960H/D1 • Supports wireless access point
- Built-in S.M.A.R.T. Technology (Self-Monitoring, Analysis and Reporting Technology for HDD) • 8/16 channel audio recording
- Covert camera operation provides enhanced security and administrator control • Switch between low and high quality stream during simultaneous Continuous + Motion or Continuous + Sensor recording modes for storage optimization
- Password to secure installation authorization • Easy firmware upgrade by USB port or network • User Access: up to 4 concurrent users
- Remote monitoring / recording / playback / configuration / software upgrades and PTZ control via internet • PC and MAC® compatible
- Supports multiple PC based browsers such as Internet Explorer, Google Chrome, Firefox and Safari • Rack mountable (hardware included)
- Network accessible via SpecoTech Multi-Client Software, SecureGuard® CMS and Speco Player Mobile Viewer



Available in 8 and 16 Channel Configurations with HDD from 1TB to 6TB – Call for Complete Details

RS and WRS Series DVRs

- 120 FPS @ (D1) • HDD Storage to 4TB
- H.264 compression
- View on iPhone® or Android
- 4 Channel audio input, 1 channel audio output
- Covert camera operation provides enhanced security and administrator control
- Programmable recording, motion detection, sensor, scheduling, continuous and manual
- Outputs: 1 BNC, 1 VGA, 1 SPOT • USB 2.0 port for video clip exporting
- Multiple language on-screen menus
- Password to secure installation authorization
- Network software supports static IP, DHCP and DDNS
- Network hardware supports 10/100 base TX ethernet
- Simultaneous live view/playback while continuing to record/network transfer or backup
- Remote monitoring/recording/playback/ configuration/software updates and control via Internet



RS Series – Traditional Look DVR



WRS Series
Covert
Wall Mount

Available in 4, 8 and 16 Channel Configurations with HDD from 500GB to 4TB – Call for Complete Details

DIGITAL VIDEO RECORDERS

CS and WCS Series

- View on iPhone®, Blackberry®, Android and Mac®
- EZ Record, Copy & Setup • EZ Network: for quick setup on a network
- H.264 recording • Recording rate up to 480 fps
- Free Speco DDNS service for use with dynamic IP addresses
- MAC® & PC compatible software included
- POS/ATM support with text overlay and searchable database
- Simultaneous live view or playback while continuing to record, network transfer
- Text message alerts of system activity and status
- Remote monitoring, recording, playback, change system settings and camera control via network and/or Internet • Real time live display
- IR Remote control included - individually control up to 16 DVRs
- Multiple analytics such as museum search and advanced motion detection
- USB 2.0 port for video clip exporting • Upgrade via Network or USB Flash drive



CS Series – Traditional Look DVR



WCS Series – Covert Wall Mount

Available in 4, 8 and 16 Channel Configurations with HDD from 500GB to 2TB – Call for Complete Details

LS Series

- View on iPhone®, Blackberry®, Android and Mac®
- 8 or 16 channel LS digital video recorder with looping outputs
- Outputs: 1 BNC, 1 VGA, 1 SPOT • 8/16 BNC loopouts
- Auto port forwarding (uPnP) and SSL encryption
- 2-way audio communication • 4 channel audio recording and 1 channel audio playback
- Built-in DVD RW drive • Self-diagnostics with automatic notification including hard disk drive S.M.A.R.T. protocol
- Free Speco DDNS service for use with dynamic IP addresses
- MAC® & PC compatible software included
- POS/ATM support with text overlay and searchable database • SNS communication alert via Twitter™
- Remote monitoring, recording, playback, change system settings and dome camera control via network and/or internet
- Multiple analytics such as museum search and advanced motion detection
- Free Central Management System (Speco Central) software allows viewing of multiple DVRs on a PC • User Access: up to 10 concurrent users
- Playback while watching live on same monitor - Up to 30 minutes pre-alarm recording - Up to 15 minutes post-alarm recording
- Password to secure installation with configurable user authentication levels • Rack mountable (hardware included) • SecureGuard® compatible



Available in 8 and 16 Channel Configurations with HDD from 500GB to 6TB – Call for Complete Details

GS Series - Hybrid

- View on iPhone®, Blackberry®, Android and Mac® • Supports Megapixel recording
- Recording rate up to 480fps@CIF/480fps@2CIF/480fps@D1
- Up to 5 monitors connectable simultaneously
- Full HD (1920 x 1080p) monitor resolution support
- Various screen formats for full HD and standard monitors
- Various recording modes: continuous, motion, alarm, Pre/post-event, text-in, panic
- Various searching modes: date/time, calendar, time bar, event, motion, alarm, text-in
- Disk mirroring, data archiving support • Various actions configurable
- External hard drives attachable via eSATA port • iSCSI support • POS support
- Remote keyboard support • Various PTZ protocol support (60+)
- USB 2.0 port for video clip exporting • Easy software upgrade via Network or USB Flash drive



Supports Megapixel Recording

D32GS2TB 16 Analog Channel + 16 IP Channel Hybrid Embedded DVR, 2TB HDD

LX Hybrid 960H Digital Video Recorder with Looping Outputs

- D12LX** 8 Ch. 960H Analog + 4 Ch. IP Hybrid Digital Video Recorder
- D20LX** 16 Ch. 960H Analog + 4 Ch. IP Hybrid Digital Video Recorder
- 8 or 16 analog channels (960H) + 4 IP channels (1080p)
- Video Out: 1 HDMI®, Loop Out, 1 Spot, 1 VGA
- Multiple search engines (date/time, calendar, record table, event, motion, museum) • Auto port forwarding and SSL encryption
- 2-way audio communication • Digital Deterrent® for triggering audio message via motion detection or sensor • Built-in DVD RW drive
- Built-in S.M.A.R.T. Technology (Self-Monitoring, Analysis and Reporting Technology for HDD) • Free Speco DDNS service
- MAC® & PC compatible software included • POS/ATM support with text overlay and searchable databas • SNS communication alert via Twitter™
- Remote monitoring, recording, playback, change system settings and dome camera control via network
- IR remote control included - individually control up to 16 DVRs • USB 2.0 port for video clip exporting
- Easy software upgrade via network or USB flash drive • Digital zoom in live mode and playback • Playback while watching live on same monitor
- Up to 30 minutes pre/post-alarm recording • Rack mountable (hardware included) • SecureGuard® compatible



Available in 8 and 16 Channel Configurations with HDD from 1TB to 9TB – Call for Complete Details

SECURITY SYSTEMS

speco technologies™

IP Camera

Full HD 1080p

Indoor/Outdoor Vandal Resistant Dome

- View on most smart devices
 - Built-in standard PoE
 - True Day/Night operation
 - Built-in IR LEDs • IR Range: 49'
 - Micro SD card slot (card not included)
 - IP66 and IK08 compliant
- O2D4** • 3.6-16mm auto iris varifocal lens



Full HD 1080

IP Camera

Indoor Dome Camera

- Supports up to 1.3 megapixel resolution or HD 720p @ 30fps
 - Built-in standard PoE (IEEE 802.3af)
 - True Day/Night operation (IR cut filter)
 - Supports H.264, MPEG4, and MJPEG codecs
 - Micro SD card slot (card not included)
- VIP1D1** • 3-9mm auto iris varifocal lens



Intensifier 3®

See In The Dark Without IR LEDs

Weather Resistant Color Bullet Camera

- 650 lines of resolution
 - Dual voltage 12V DC & 24V AC operation
- HTINTB8** • Built-in 2.8-12mm auto iris varifocal lens
HTINTB9 • Built-in 5-50mm auto iris varifocal lens
HTINTB10 • Built-in 9-22mm auto iris varifocal lens



IP Camera

Full HD 1080p

2MP Indoor Dome Camera

- View on most smart devices
- Built-in standard PoE
- True Day/Night operation
- Built-in IR LEDs • IR Range: 49'
- Wide dynamic range (WDR) operation
- Micro SD card slot (card not included)



Full HD 1080

IP Camera

Indoor Cube Camera

- Supports HD 720p @ 30fps
 - Built-in standard PoE
 - PIR sensor & illumination LED
 - 2-way audio communication with built-in microphone and speaker
 - Digital Deterrent®
 - Micro SD card slot (card not included)
- VIP2C1P** • 2.6mm fixed lens



Intensifier 3®

See In The Dark Without IR LEDs

Color Indoor Dome Camera

- 650 lines resolution
- 12V DC or 24V AC with line lock



IP Camera

Full HD 1080p

2MP Indoor/Outdoor Bullet Camera

- View on most smart devices (free apps)
 - Built-in standard PoE
 - Built-in IR LEDs • IR Range: 90'
 - Micro SD card slot (card not included)
 - IP67 compliant
- O2IR56B1** • 2.8-10mm auto iris varifocal lens



Full HD 1080

IP Camera Accessory

D1BD

Single Channel IP Encoder For Analog Cameras

- Converts analog video into digital D1 resolution @ 30fps
- Supports H.264 and MJPEG codecs
- ONVIF Profile S



Intensifier 3®

See In The Dark Without IR LEDs

Weather/Tamper Resistant Color Dome/Turret Camera

- 650 lines of resolution
- HTINTD8** • Built-in 2.8-12mm auto iris varifocal lens
HTINTD9 • Built-in 5-50mm auto iris varifocal lens
HTINTD10 • Built-in 9-22mm auto iris varifocal lens



IP Camera

Full HD 1080p

2MP Indoor/Outdoor Bullet Camera

- View on most smart devices (free apps)
 - Built-in standard PoE
 - Built-in IR LEDs • IR Range: 82'
 - Micro SD card slot (card not included)
 - IP66 compliant
- O2B5** • 3.7mm fixed lens



Full HD 1080

Intense-IR Series

Color Day/Night Indoor Dome Camera

- 1/3" Sony Super HAD II™ CCD
 - 3DNR - sharp image under ultra low light level
 - Intense-IR function - no saturation image, vivid image
 - ICR - removable IR cut filter
 - 12VDC / 24VAC dual voltage operation
- CVC5825DNV** • Built-in 2.8-12mm auto iris varifocal lens

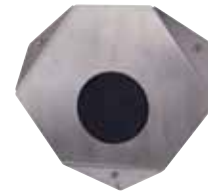


Intensifier 3®

See In The Dark Without IR LEDs

Vandal Resistant Corner Mount Color Camera

- 650 lines of resolution
 - 12VDC / 24VAC dual voltage operation
 - Housing can withstand blows from a 10 lb. sledgehammer
- CVCCMR5.2** • Built-in 3.6mm fixed lens



IP Camera

Full HD 1080p

Indoor/Outdoor Mini Dome

- View on most smart devices
 - Built-in standard PoE
 - Built-in IR LEDs • IR Range: 30'
 - Micro SD card slot (card not included)
 - IP66 compliant
- O2MD1** • 3.7mm fixed lens



Full HD 1080

Intense-IR Series

Weather Resistant Color Day/Night Bullet Camera

- Two Heaters
 - 32x Digital Zoom
 - 3D-DNR (sense-up) - sharp image under ultra low light level
 - 1/3" Sony Super HAD II™ CCD
 - 600 TV lines of resolution
- CVC5815DNV** • Built-in 2.8-12mm auto iris varifocal lens



Intense-IR Series

Tamper/Weather Resistant Color Day/Night Dome Bullet Camera

- 32x Digital Zoom
 - Non Saturated, Vivid Image
- CVC5845DNV** • Built-in 2.8-12mm auto iris varifocal lens
CVC5945DNV • Built-in 5-50mm auto iris varifocal lens



IP Camera

Indoor/Outdoor Mini Dome

- Full HD
 - Maximum resolution of 2.0 megapixel (1920x1080)
 - Supports WiFi network connection (IEEE 802.11 b/g/n)
 - Supports H.264, MPEG4, and MJPEG codecs
 - Micro SD card slot (card not included)
- VIP2P1N** • 3.7mm fixed lens



Full HD 1080

Intensifier 3®

See In The Dark Without IR LEDs

Color Indoor Dome Camera

- 650 lines of resolution
 - Tamperproof with Chameleon Cover
- HT7246IHR** • Built-in 2.8-12mm auto iris varifocal lens
HT7247IHR • Built-in 9-22mm auto iris varifocal lens
HT7250IHR • Built-in 5-50mm auto iris varifocal lens



Miniature Weatherproof, Vandal Resistant IR Color Camera

- 540 TV lines resolution
 - 10 IR LEDs Built-In
 - Only 1.89" in diameter
 - Vandal resistant housing
 - Weatherproof (IP66 Rated) • Ideal for use in vehicles
- CVC71HRW** • Built-in 3.4mm fixed lens
CVC61HRW • Built-in 3mm fixed lens/no IR LEDs



960H Hi-Resolution Outdoor IR Dome Camera with Chameleon Cover™

- 1/3" 960H color CCD
- 700 TV lines of resolution
- 28 IR LEDs
- 3DNR (digital noise reduction)
- DWDR (digital wide dynamic range)
- Smart digital zoom • Digital image stabilizer
- De-fog • 3 axis lens mount • IP66 compliant

HT671H • Built-in 2.8-12mm auto iris varifocal lens



960H Hi-Resolution Indoor/Outdoor Vandal Dome Camera

- 1/3" Sony Super HAD™ CCD
- 700 lines of color resolution
- Amplify existing light with no distance limitations
- Heater circuitry eliminates fog or condensation
- 12VDC / 24VAC dual voltage operation
- Vandal resistant operation • IP66 compliant

HT7246H • Built-in 2.8-12mm auto iris varifocal lens



Intense Light Weather/Vandal Resistant Miniature Color Camera CVC61ILTB


- 3mm fixed lens
- 1/3" Sony Super HAD™ CCD
- 600 TV lines of resolution
- Day/Night camera without using IR's
- Compact size - only 1.89" in diameter!
- Vandal resistant operation • IP66 compliant



960H Hi-Resolution 960H Diamond Dome™ Series Miniature Indoor Camera

- 1/3" 960H Sony Super HAD II™ CCD
- 700 TV lines of resolution
- Unique and stylish housing
- Small form factor for an unobtrusive look
- 3-axis wall or ceiling mount • Full OSD operation


CDD11HW • 3.6mm fixed lens



960H Hi-Resolution Weatherproof Color Bullet Camera

- 700 lines of color resolution
- Minimum illumination 0.00002 lux (Intensify @ 512x)
- 12VDC / 24VAC dual voltage operation
- Weather resistant operation
- IP66 compliant • Anti-moisture glass and circuitry

HTINTB8H • Built-in 2.8-12mm auto iris varifocal lens



High Resolution Color Indoor Dome Camera

- BLC - Adjustable BLC ratio
- Camera Titles - On / Off: Easy user set-up
- Day/Night - Color / BW / Auto
- Mirror Image - To reverse field of view
- Full OSD control of all major camera functions
- Privacy Screens - Easy user set-up and dynamic control for exact settings

CVC6146SCS • Built-in 2.8-12mm auto iris varifocal lens



960H Hi-Resolution 960H Weather Resistant IR Bullet Camera

- 1/3" 960H color CCD
- 700 TV lines of resolution
- IR Range: 65' (depending on scene reflection)
- Weather resistant operation
- IP66 compliant • 12VDC operation
- Mounting bracket included

CVC617H • 4.3mm fixed lens



960H Hi-Resolution Weather/Tamper Resistant Color Dome Camera

- 700 lines of color resolution
- Minimum illumination 0.00002 lux (Intensify @ 512x)
- 12VDC / 24VAC dual voltage operation
- Weather resistant operation
- IP66 compliant • Anti-moisture glass and circuitry

HTINTD8H • Built-in 2.8-12mm auto iris varifocal lens



Indoor/Outdoor PTZ Speed Dome Camera

- 1/4" Sony Super HAD™ CCD
- 144x zoom: 12x optical zoom with 12x digital zoom
- 360° endless rotation
- True Day/Night operation
- Intelligent Pan/Tilt controlling
- 12VDC / 24VAC dual voltage

HTSD12X • 3.6 - 44.3mm 12x optical zoom with 12x digital zoom lens



960H Hi-Resolution 960H Indoor IR Dome Camera with Chameleon Cover™

- 1/3" 960H color CCD
- 700 TV lines of resolution
- 28 IR LEDs
- 3DNR (digital noise reduction)
- DWDR (digital wide dynamic range)
- Smart digital zoom

HT648H • 4mm fixed lens



Hi-Resolution High Resolution Tamper/ Weather Resistant Color Dome Camera

- 650 lines resolution
- Internal IR LEDs with anti-reflective technology
- Up to 65 ft. IR range • Tamper resistant
- IP67 rated for extreme weather applications

HT6501RVFHQS • 2.8-12mm DC auto iris varifocal lens



Color Indoor Dome Camera with IR LEDs VL648IRVF

- Color Day/Night camera
- 2.8-12mm DC auto iris varifocal lens, black housing
- With special shielding to eliminate IR reflections • 600 lines resolution
- Used for indoor applications
- Can be wall or ceiling mounted with the included mounting bracket



960H Hi-Resolution 960H Indoor IR Dome Camera with Chameleon Cover™

- 1/3" 960H color CCD
- 700 TV lines of resolution
- 28 IR LEDs
- 3DNR (digital noise reduction)
- DWDR (digital wide dynamic range)
- Smart digital zoom


HT649H • 2.8-12mm lens



Day/Night Weather Resistant Color Bullet Camera

- 600 TV lines resolution
- Zero noise and no ghosting
- Front Glass Heater
- True day & night

VL7038IRVF • Built-in 2.8-12mm auto iris varifocal lens
VL7039IRVF • Built-in 6-50mm auto iris varifocal lens



Indoor/Outdoor Day/Night Motorized Speed Dome Camera HTSD37X

- 3.5 - 129.5mm, 37x optical zoom with 16x digital zoom lens
- 1/4" interline transfer CCD
- 600 TV lines of resolution
- 360° endless rotation • True Day/Night Operation
- Intelligent pan/tilt controlling
- Weather resistant operation



960H Hi-Resolution 960H Indoor/Outdoor IR Bullet Camera

- 1/3" 960H color CCD
- 700 TV lines of resolution
- 42 IR LEDs
- Digital image stabilizer
- De-fog
- 3 axis lens mount
- IP67 compliant

HT7040H • 2.8-12mm lens



For over fifty years, Speco Technologies has dedicated themselves to providing the latest innovations in video surveillance and electronic accessories, as well as the highest quality audio products for residential and commercial use. They have committed to providing affordable, dependable merchandise, delivering exceptional customer service, and offering extensive product training, technical and marketing support. There is a Speco Technologies solution for all of your security, paging and AV needs and they're all available here at Target Distributing. Call the experts at Target and we'll help you get the solutions you need to keep both your customer and your bottom line happy!



RESIDENTIAL/COMMERCIAL VIDEO ENTRY SYSTEM



JMS-4AED Box Set

Set includes: 7" Touchscreen Video Intercom, Surface Mount-Plastic Door Station, Power Supply



JMS-4AEDF Box Set

Set includes: 7" Touchscreen Video Intercom, Flush Mount-Stainless Steel Door Station, Power Supply



JMS-4AEDV Box Set

Set includes: 7" Touchscreen Video Intercom, Surface Mount-Zinc Die Cast Door Station, Power Supply

The JM Series Touchscreen Intercom features a large 7" touchscreen LCD for clear visitor identification and easy operation. The JM Series can be installed at 4 door locations and connected to 8 inside locations with internal communication between stations. The JM Series features hands-free communication with a handset for privacy communication in high volume environments. Perfect for homes and offices.

JM Series Features

- Navigate through features easily using the 7" touchscreen interface
- Accommodates 4 door stations + 8 inside stations with internal communication
- Flexible wiring choices - use homerun or daisy chain wiring methods between inside stations with CAT-5e or low voltage cable
- Door station can connect to master station using standard 2-wire cable, for example, commonly used doorbell wire
- Touchscreen stations control PanTilt and Zoom camera at door station
- Picture memory records images of visitors to internal memory or to an SD/SDHC card (sold separately) to increase picture memory frame rate
- Three alarm inputs, eg. door/window contacts, PERS devices
- T-coil support for compatible hearing aides
- 170° door station camera eliminates blind spots
- Video output to DVR or monitor
- One available output to control secondary devices like a light or gate
- System can be partitioned so only certain masters are authorized to unlock specific doors



Hands-Free (One Touch)

Simply touch the screen and easily communicate with visitors using the built-in microphone and speaker

Handset

Need privacy? Just pick up the handset at any time during conversation. It is perfect for high-volume environments!

Start with one of the box sets shown above and add an additional sub master stations and door stations shown below to expand system:

- | | |
|---------------|---|
| JM-4HD | Sub master station, up to 7 can can be used with JM-4MED |
| JK-DA | Door station, surface mount, plastic exterior |
| JK-DV | Door station, surface mount, zinc die cast |
| JK-DVF | Door station, flush mount, stainless steel |
| JMW-BA | Long distance adaptor for audio/video door stations |
| JM-8Z | Distribution adaptor for sub master stations (only required for homerun wiring methods) |

"Images provided by Aiphone. All rights reserved."

IP DOOR ENTRY WITH COMMUNICATION, PAGING, ANNOUNCEMENT SCHEDULING AND RESCUE ASSISTANCE

IS Series – IP Video Intercom

- Identify visitors at locked doors • Communicate easily between stations
- Schedule Bells & Announcements • Forward Failed Calls Automatically
- Emergency Broadcasts – Create areas and zones to easily broadcast emergency announcements quickly
- Transfer Video Calls • Use a simple browser to jump online and set-up, change, or customize the IS Series
- 170° viewing angle • Save system settings, then export and upload them to another system • Scalable

- IS-DV** 170° Pan,Tilt and Zoom Video Door Station, aluminum die cast, surface mount
- IS-DVF** 170° Pan,Tilt and Zoom Video Door Station, stainless steel, flush mount
- IS-SS** Audio only Door/Sub Station, stainless steel, flush mount
- IS-RS** Audio only Room/Sub Station
- IS-MV** Video Master Station
- IS-SOFT** IP Addressable PC Master Station Software
- ISS-IPMDV** IP Direct Box Set includes IP direct IS-DV (IS-IPDV) + IP direct IS-MV (IS-IPMV), PoE
- ISS-IPMDF** IP Direct Box Set includes IP direct IS-DVF (IS-IPDVF) + IP direct IS-MV (IS-IPMV), PoE
- ISS-IPSWDV** IP Direct Box Set includes IP direct IS-DV (IS-IPDV) + PC intercom software (IS-SOFT), PoE
- ISS-IPSWDF** IP Direct Box Set includes IP direct IS-DVF (IS-IPDVF) + PC intercom software (IS-SOFT), PoE
- IS-CCU** Central Control Unit Accommodates: 4 Door / Sub Stations, 4 Master Stations, 2 IS-SCU's, 4 IS-RCU's, & 1 IS-IPC
- IS-SCU** Add-on Control Unit Accommodates: 8 Door / Sub Stations and 8 Master Stations
- IS-RCU** Room Sub Control Unit Accommodates: 30 Room / Sub Stations
- IS-IPC** Network/Phone Interface Unit. Connects (1) IS-CCU and all wired components to a network and a PBX system

IS Series Rescue Assistance Stations

- IS-DVF-2RA** Audio/Video Sub Station, ADA compliant lettering & Braille signage, dual call buttons, 2 programmable relay outputs
- IS-SS-2RA** Audio Sub Station, ADA compliant lettering & Braille signage, dual call buttons, input for separate camera, 2 programmable relay outputs
- IS-SS-RA** Audio Sub Station, ADA compliant lettering & Braille signage, single call button, input for separate camera, 2 programmable relay outputs
- IS-WBCE** Wall Mount box for IS-RA stations. Only 4" deep to meet with ADA regulations. Caged beacon light. Red "EMERGENCY" lettering
- IS-WBCA** Wall Mount box for IS-RA stations. Only 4" deep to meet with ADA regulations. Caged beacon light. Blue "ASSISTANCE" lettering
- IS-WBHE** Wall Mount box for IS-RA stations. Only 4" deep to meet with ADA regulations. Enclosed beacon light. Red "EMERGENCY" lettering
- IS-WBHA** Wall Mount box for IS-RA stations. Only 4" deep to meet with ADA regulations. Enclosed beacon light. Blue "ASSISTANCE" lettering
- RA Station Towers** Modular design saves on shipping and installation costs. Variety of heights, colors and lettering available



"Images provided by Aiphone. All rights reserved."

TENANT ENTRY SYSTEMS – AUDIO AND VIDEO

GT Series – Multi-Tenant Entrance Security

- ADA compliant design • 170° Pan,Tilt and Zoom video camera for larger viewing area
- Built-in access code keypad for keyless entry (500 codes)
- Link data allows for easy programming of multiple entrances/guard stations
- Up to 16 entrance panels, 4 guard stations and 500 tenant stations • Door release timer (momentary-20 seconds)
- GT-2C can also be wired to individual tenant door stations or to an ordinary doorbell
- Security guard station can communicate between office/lobby & tenants
- Optional panic call switch for emergency calling to guard/concierge

- GT-DM** All-in-one Entrance Panel with 3.5" LCD display screen, Pan,Tilt, Zoom color camera, 500 unique tenant access key codes, stainless steel, flush mount
- GTA-DES** Audio only 10-key digital entrance station with access control keypad
- JK-DV** Individual tenant door station, identify people in hallway (with GT-2C only)
- GT-2C** Hands-free Tenant Master Station with PTZ camera control, Picture Memory, Suite Security and internal communication WHITE (GT-2CB – BLACK / GT-2CS – SILVER)
- GT-2H** Hands-free Tenant Sub Station for GT-2C with PTZ camera control & internal communication – WHITE (GT-2HB – BLACK / GT-2HS – SILVER)
- GT-1C** Hands-free Tenant Station with PTZ camera control – WHITE (GT-1CB – BLACK / GT-1CS – SILVER)
- GT-HS** Optional Add-on handset to add privacy to GT-2C/2CB/2CS, GT-2H/2HB/2HS, and GT-1C/1CB/1CS units
- GT-1A** Audio only hands-free Tenant Station
- GT-MK** Doorman/Security Guard Station
- GT-TLI** Telephone line adapter to answer/unlock door from a telephone number-1 per tenant
- GT-BC** Audio bus control unit
- GT-VBC** Video control unit
- GT-4Z** Four-way video distributor
- W-DIN11** DIN rail mounting bracket for GT-BC/GT-VBC/GT-4Z
- GT-BCX** Expanded audio control unit
- GT-VBX** Expanded video control unit
- PS-2420UL** 24 V DC power supply



"Images provided by Aiphone. All rights reserved."

LET THE EXPERTS AT TARGET HELP YOU SPEC YOUR AIPHONE SYSTEM 219

TOLL FREE – 800-873-5528 • LOCAL – 301-296-9400 • FAX – 301-296-9494

7-INCH TOUCH BUTTON VIDEO INTERCOM



JO Series

The JO Series conveniently identifies visitors at locked doors. Inside stations feature easy to use touch buttons and a large, 7" video screen. The JO Series can accommodate one door and up to two inside stations. Ready to install box sets include one door station, one inside station, and power supply.

Features include:

- 7" Screen • Touch buttons for system control • Elegant styling • Slim design video master: 13/16" depth • Uses 2-conductor wiring



JOS-1A Box Set

Includes:

JO-DA

Video door station, plastic, surface mount

JO-1MD

Video master station with touch buttons

PS-1820UL

Power supply



JOS-1V Box Set

Includes:

JO-DV

Video door station, zinc die cast, surface mount

JO-1MD

Video master station with touch buttons

PS-1820UL

Power supply



JOS-1F Box Set

Includes:

JO-DVF

Video door station, stainless steel, flush mount

JO-1MD

Video master station with touch buttons

PS-1820UL

Power supply

Start with one of the box sets shown above and add accessories shown below to expand the system:

JO-1FD

Video intercom expansion station with touch buttons (maximum 1 per system)

AC-10S

Backlit Access Control Keypad with up to 100 unique access codes, surface mount, zinc die-cast to match JO-DV

AC-10F

Backlit Access Control Keypad with up to 100 unique access codes, flush mount

MCW-S/A

Inside station desk stand

RY-ES

The RY-ES is a relay used to activate an external signaling device when the door station calls in

IER-2

Call extension speaker

ENTRY SYSTEMS – AUDIO and VIDEO

KB Series – Video Entry System with Tilt Camera

- Quick & easy to install
- Clear and bright image with color TFT LCD monitor and color video door station
- Three color video door stations, five inside monitor stations
- Instant voice call-in with image
- Selective Call or All Call
- Chime or receiver volume control
- Optional selective door release with RY-3DL
- 330' total distance looped between monitors
- TILT camera control

KB-DAR

Plastic, surface mount door station

KB-3MRD

Master video station

KB-3HRD

Sub master video station

KB-3SD

Audio only sub master station

PS-2420UL

24V DC power supply



"Images provided by Aiphone. All rights reserved."

"Images provided by Aiphone. All rights reserved."

BOX SETS – EASY INSTALLATION FOR SMALLER VIDEO INSTALLATIONS

JF Series Hands-free Color Video Intercom

The JF Series is a high performance, hands-free video intercom system with a superior monitor and an amazingly slim design. It is easy to operate and requires little time to install. The JF Series is the simple and effective solution to your security needs.

- Quick & easy to install • Up to 2 doors and 3 inside stations
- Keep doors locked and secure while identifying visitors

Box Sets:

JFS-2AED Includes (1) JF-2MED, color video Master Station with Picture Memory,

(1) JK- DA, plastic, surface mount Door Station, power supply

JFS-2AEDV Includes (1) JF-2MED, color video Master Station with Picture Memory,

(1) JK- DV, zinc die cast, surface mount Door Station, power supply

JFS-2AEDF Includes (1) JF-2MED, color video Master Station with Picture Memory,

(1) JK- DVF, stainless steel, flush mount Door Station, power supply

Expand the system or buy individually:

- JF-DA** Door Station-Fixed Video, Plastic, Surface Mount
JF-DV Door Station-Fixed Video, Vandal Resistant, Zinc Die cast, Surface Mount
JF-DVF Door Station-Fixed Video, Vandal Resistant, Stainless Steel, Surface Mount
JF-DVF-HID Same features as JF-DVF, with embedded HID® ProxPoint® proximity card reader
JF-DVF-HID-I Same features as JF-DVF, with embedded HID® iClass® Smart Card reader
JF-2MED Color Video Master Station with Picture Memory
JF-2HD Color Video Sub Master Station
JF-2SD Audio only Sub Master Station



"Images provided by Aiphone. All rights reserved."

TENANT ENTRY SYSTEMS – AUDIO ONLY

DB Series – Two Wire Tenant Entry System

- Up to 5 stations per door call button
 - All Call between stations in same residence
 - Internal communication can be hands-free (VOX) or push-to-talk (PTT)
 - Door release powered by door station without the need for an additional transformer
 - Call tone volume control with mute indicator • Communication volume control
 - Optional Call Extension Sounder • Backlit directory at door
 - Simple two-wire connection for intercom and door release (Door strike wires directly to door station)
 - 1, 2, or 4-call door stations for individual or multi-tenant applications
- DA-2DS** 2-Call Entrance Station (Supports up to 5 inside stations per tenant)
DA-4DS 4-Call Entrance Station (Supports up to 5 inside stations per tenant)
DB-1MD Hands-free Inside Tenant Master Station
DB-1SD Hands-free Inside Tenant Sub Station (connect up to 4 subs to DB-1MD)
DBS-1A Boxed Set includes (1) DB-1MD, (1) DA-1DS & power supply
PT-1211C Power supply
EL-12S Door strike for use with DA-1DS / 2DS / 4DS door stations



"Images provided by Aiphone. All rights reserved."

HANDS-FREE SELECTIVE CALL SYSTEM – AUDIO ONLY

LEF SERIES Intermixable Open Voice Hands-Free System – Surface Mount Design

- Intermix master, sub stations and door stations in any combination up to maximum capacity
- Selective calling from a master station with hands-free reply
- Call-in from subs activate tone and LED at master(s)
- Selective door release from LEF-5, LEF-10 and LEF-10S

- LEF-3L** 3-Call Surface Mount Master with Selective Door Release
LEF-5 5-Call Surface Mount Master with Selective Door Release
LEF-10 10-Call Surface Mount Master with Selective Door Release
LEF-10S 10-Call Surface Mount Master with Selective Door Release and All Call Button
LE-AN Surface Mount Sub Station with Privacy
LE-AN3 3-Call Surface Mount Sub Station with Privacy
LE-D Surface Door Station
LE-SS Flush Mount 2-Gang Stainless Steel Door Station
LE-SS-1G Flush Mount 1-Gang Stainless Steel Door Station
LE-SSR Flush Mount 2-Gang Stainless Door Station w/Red Mush. Btn.
LE-SSV Flush Mount 2-Gang Door Station w/CCTV



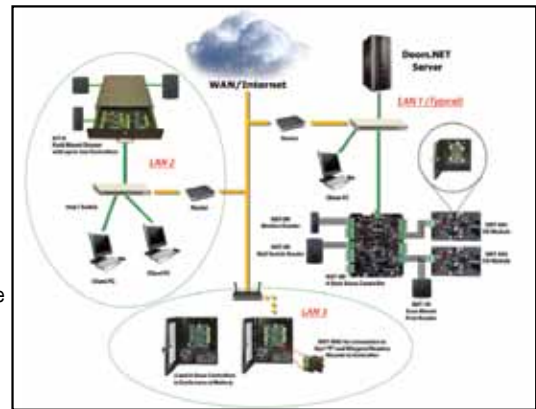
"Images provided by Aiphone. All rights reserved."

LET THE EXPERTS AT TARGET HELP YOU SPEC YOUR AIPHONE SYSTEM 221

TOLL FREE – 800-873-5528 • LOCAL – 301-296-9400 • FAX – 301-296-9494

NXT Hardware Platform

- Sophisticated embedded Ethernet-based access controllers (no LAN adapters) that hang right on the network
- Managed by Doors.NET - SQL-based, Client/server Software, providing multiple concurrent sites, with no third-party client license fees
- NXT-4-wire readers are fully supervised with encrypted data between cards/readers
- Network Appliance architecture utilizing 2 or 4 door panels, coupled with optional interface boards for I/O and industry-standard reader formats
- 50,000 card holders per controller, thousands of doors per system • Secure Client/server architecture
- Utilizes existing networks or dedicated CAT-5 cabling • Totally "Flash" programmable and re-programmable
- Optional I/O expansion with powerful, logical functions in Doors.NET Software
- Supports 1 button auto-configuration process with embedded MAC address
- Standard 4-pin block and RJ connection to Ethernet



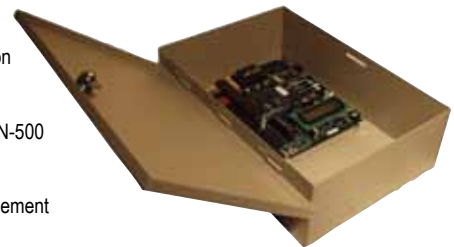
Call for Complete Hardware and Software Specifications

PXL-500 Tiger Controller II

The PXL-500 Tiger Controller has all of the functionality needed to manage a single door, alarm output, and 2 reader ports. A second door can be added when used with SB-593 Satellite Expansion Board. The SB-593 Satellite Expansion Board economically provides second door control plus extra general purpose inputs and outputs.

- Locking Metal Enclosure that can also house required KPS-4 Power Supply and battery (not included)
- Added RAM for increased cardholder capacity (up to 65K per controller) • On-board LAN socket for new low cost LAN-500
- Increased EEPROM memory to support future enhanced firmware capabilities
- 100% Intelligence at each Door • Expandable 1 or 2 Door(s)-at-a-time
- RS-232 Serial Port for Direct Connection to PC or Connection via TCP/IP or Modem for Remote Multiple Site Management
- Reliable RS-485 Controller Network for up to 256 Doors per site • 65,000 User Capacity
- Support for Keri Proximity Reader or any Wiegand Compatible Reader Technology

The SB-593 Satellite Expansion Board plugs into the PXL-500 to provide additional functionality at a cost far less than that of adding another controller. The SB-593 gives each PXL-500 an additional 8 general purpose inputs and 4 general purpose outputs.



Rutherford Controls Electric Strikes

- RCI's electric strikes are constructed so that they do not interfere with egress through the door or any other opening cover used
- Field selectable lock mode – fail locked or fail unlocked • Field selectable voltage – 12/24VDC or 12 to 24VAC

0 Series	Commercial Duty	For Retrofit or Rim Exit Devices
F1 Series	Fire-Rated Duty	Fire-Rated Duty
2 Series	Heavy Duty	For Offset & Centerline Latch Entry
4 Series	Commercial Duty	For Centerline Latch Entry
F4 Series	Fire-Rated Duty	For ANSI Centerline Latch Entry
6 Series	Commercial Duty	Multi-Functional - For Centerline Latch Entry
7 Series	Commercial Duty	For Adjustable Centerline Latch Entry



Rutherford Controls Electromagnetic Door Locks 8 Series Multi-Mag

- Anodized clear aluminum finish • Adjustable mounting bracket • 12/24V field selectable voltage • Convenient plug-in terminals
- No residual magnetism • 1500-pounds holding force

EW8310	Early Warning	For Single Outswinging Interior or Perimeter Doors
DE8310	All-in-One Delayed Egress	For Single Outswinging Perimeter Doors
8310	MultiMag®	For Single Outswinging Interior or Perimeter Doors
8320	MultiMag®	For Double Outswinging Interior or Perimeter Doors
8310-IQ	IntelliMag®	For Single Outswinging Interior or Perimeter Doors
8320-IQ	IntelliMag®	For Double Outswinging Interior or Perimeter Doors
8320-101	Delayed Egress Systems	For Double Doors without Mullion (NFPA-101)
8330	Single MultiMag®	with Extended Housing



CCTV Camera & Accessory Power Supply

AL1224DC

Eight (8) fuse protected outputs

AL1224DC1

Sixteen (16) fuse protected outputs

- 12VDC or 24VDC output • Power On/Off switch
- 4 amp of total continuous supply current output
- 3.5 amp total max. per output
- Filtered & electronically regulated outputs
- 115VAC 50/60Hz, 1.45 amp input
- Surge suppression • AC/DC power LED indicator
- Unit maintains camera synchronization



AC Wall Mount

CCTV Power Supply

ALT244

Four (4) fuse protected outputs

ALT248

Eight (8) fuse protected outputs

- 24VAC or 28VAC selectable output.
- 4 amp @ 24VAC or 3.5 amp @ 28VAC (100VA) supply current
- Output fuses are rated @ 3.5 amp • 115VAC 50/60Hz, .9 amp input
- Surge suppression • AC power LED indicator
- Power On/Off switch • Unit maintains camera synchronization



ORDERING

Orders may be placed via phone, fax, email or on our web site. In most cases, orders placed by 4:30 PM East Coast Time are shipped the same day.

Target is an authorized GSA contractor for many product lines. Call for information regarding government, educational and institutional sales. Some orders may be subject to a processing fee. Consult your salesperson for details.

MINIMUM ORDERS

Minimum shippable order is \$50.00.

SPECIAL ORDERS

Special orders are non-cancellable and require a 20% deposit.

SHIPPING

We utilize UPS, Federal Express, direct courier and common carrier. Your requests for special handling such as Next Day Red, Second Day Blue, etc. are gladly accepted. Target is not responsible for any damages incurred from the performance of these carriers. All fuel surcharges will be passed on to our customers as they are imposed by the carrier on all shipments alike. Plasma, LCD and projection TVs over 42 inches must be shipped via common carrier.

FREIGHT

Shipments are freight collect, Germantown, Maryland. Residential-based businesses are subject to carriers' residential rates. All freight charges are subject to carrier's dimension/oversize/weight regulations. Shipping charges are non-refundable. Customer is responsible for all freight charges for delivery on shipments that are not accepted or refused. **Refused shipments will be charged a 15% restocking fee.** All claims for shortages or mis-shipments must be made within 7 days of receipt and will be audited before settlement.

PAYMENT

All orders are shipped COD Certified Funds, which include Bank Check, Cashier's Check or Money order, unless you have previously been approved for Company Check, COD or Net Terms. UPS no longer accepts Cash or Certified Check. You hereby authorize that all returned checks and all past due invoices will be made good via your on-file credit card information. Visa, MasterCard, Discover and American Express are accepted. Credit card orders will only be accepted from individuals who are authorized by the cardholder, in writing to Target Distributing, to place such orders.

Credit card payments on past due invoices will be assessed a charge of 3% to offset the loss of cash discount per original payment terms. Payment by check is an automatic authorization to Target to ACH (Automated Clearing House) your check.

TERMS

Accounts may be established as either Company Check, COD or Net Terms. A Target "Profile Sheet" must be completed and approved to allow Company Check COD or credit card. A Target "Full Credit Application" must be completed and approved to allow Net 30 Day payment terms. No shipments will be made to any past due accounts. If a delinquent account is sent to collections, the customer will be responsible for all collection charges and associated legal fees. All open Net Accounts hereby agree that any and all past due amounts may be collected via the account holder's on-file credit card and a 3% service charge will be assessed and agreed to by the account holder to offset the loss of cash discount per the original terms.

CLAIMS

All claims for damage or loss are to be made through the freight carrier. If your package arrives with exterior damage or signs of tampering, notify the carrier while on site. (Note: You must retain all boxes, packaging, instructions, etc.)

RETURN POLICIES

As a Wholesale Distributor, Target is bound by the return policies of the various manufacturers we represent. Call for specific policies. **Returned non-defective merchandise is subject to a 15% re-stocking charge.** All returns are for credit only. Plasma, LCD and projection TVs are not returnable to Target for any reason.

DEFECTIVE MERCHANDISE

Telecom/Datacom/Conferencing/Security
Most merchandise purchased from Target Distributing's Telecom and/or Security Division(s) that is initially defective within 30 days of invoice may be eligible for replacement. Other products are handled as required by the manufacturer. This may include returning it directly to the manufacturer for repair or replacement. **Defects that occur after 30 days from invoice date are covered by the manufacturer's limited warranty only.**

Audio/Video

All hardware that is defective, either initially or within Warranty, is handled directly with the manufacturer in accordance with their limited warranty policies, and not through Target Distributing. Please turn to page 2 of this catalog for a listing of manufacturer's help numbers.

RETURN AUTHORIZATION (RA) and CONDITIONS

No product will be accepted for return to Target Distributing without an "RA" number and "RA" form signed by the customer. Merchandise returned without a signed "RA" form will remain the property of the customer and will not be accepted or credited against their open account.

TERMS and CONDITIONS

The disposition of all "RA" numbers is conditional until inspected and accepted by Target. All returns must be shipped freight prepaid and **double boxed** with the "RA" number displayed prominently on the outside of the shipping carton along with the number of cartons shipped (ex. 1 of 4, 2 of 4, etc.). All returns must be complete with original boxing, parts, adapters, accessories, instructions and warranty cards. "RA" Numbers must be obtained from your Target Distributing Sales person before returning product to Target. Your invoice information must be provided by you when requesting an "RA" number. **All "RA" numbers are valid for 30 days only.** When authorization for return is issued by Target Distributing, you, as the account, certify that the merchandise being returned is the same current product, with the same serial number as shipped, complete and in the same new condition as when received from Target Distributing. On the aforementioned returned products, and for which Target Distributing does not receive credit from its vendors due to "out-of-warranty", initial failure, abuse or incomplete, you agree to accept those products back from Target Distributing and remit immediate payment to Target Distributing. In some cases, the manufacturer's warranty guidelines may supersede any Target Distributing Policies. Target Distributing does not handle repairs. Returns will be credited at the price paid on the invoice or the current selling price, whichever is lower, less any re-stocking charge. **Products that have been abused will not be accepted by Target Distributing for credit or replacement.**

In some cases, the manufacturer's warranty guidelines may supersede any Target Distributing Policies.

LIMITATION OF LIABILITY

Target Distributing (Seller) passes along to its customers solely those warranties extended by its vendors. Seller does not itself warrant any product which it sells. There are no warranties, express or implied, of merchantability, or fitness for a particular purpose or otherwise, which extend beyond the description on the face hereof. In no case shall seller be liable to anyone for any consequential or incidental damages for breach of this or any other warranty, express or implied, or upon any other basis of liability whatsoever, even if the loss or damage is caused by its own negligence or fault. Seller does not represent that the products it sells may not be compromised or circumvented; that the products will prevent any personal injury or property loss by burglary, robbery, fire or otherwise; or that the products will in all cases provide adequate warning or protection.

SECURITY PRODUCTS

LIMITATION OF LIABILITY

Customer understands that properly installed

and maintained security devices may only reduce the risk of a burglary, robbery or fire without warning, but it is not insurance or a guarantee that such will not occur or that there will be no personal injury or property loss as a result. Consequently, seller shall have no liability for any personal injury, property damage or other loss based on a claim the product failed to give warning. However, if it is held liable, whether directly or indirectly, for any loss or damage with respect to the products it sells, regardless of cause or origin, its maximum liability shall not in any case exceed the purchase price of the product, which shall be the complete and exclusive remedy against Seller.

By placing an order, customer accepts all terms, conditions and policies herein. All customers agree that the Terms and Conditions updates herein become a part of the customer's previously signed agreement.

PRICING & PRODUCTS IN THIS CATALOG ARE AVAILABLE TO QUALIFIED RESELLERS ONLY

If you have any suggestions on ways that we can better serve you, please let us know. We consider it a privilege to be of service to you and believe that you are our greatest business asset.

©2014 TARGET DISTRIBUTING

All rights reserved. All brand names and product names used herein are trademarks or registered trademarks of their respective holders. Target Distributing is not responsible for typographic errors. Some product art shown for representational purposes only.



**WEST COAST SHIPPING IN 3 DAYS
AT NEAR GROUND RATES**

**PRICES and SPECIFICATIONS
SUBJECT TO CHANGE
WITHOUT NOTICE**

E-MAIL – TGSales@targetdist.com • INTERNET – www.targetd.com

TOLL FREE – 800-873-5528 • LOCAL – 301-296-9400 • FAX – 301-296-9494

NEC Financial Services



Grow Your Customers' Business and Grow Your Own

**NEC Financial Services can help
with flexible financing for your technology needs**

Leverage three decades of financing expertise NOW! Put us to work for you and your customers

- Finance your technology solutions
- Quick decisions and funding
- Simple documentation
- Affordable monthly payments
- Customer support from start to finish
- Provide your customer a Technology Credit Line
- Make NEC Financial Services part of your customer's solution

GET STARTED TODAY

at

800-451-5361

or

Sales@neclease.com

NEC Financial Services: Your strategic business partner

www.neclease.com

NEC, the NEC logo and Empowered by Innovation are trademarks of the NEC Corporation. Other trademarks and trade names are the property of their respective owners.
©2014 NEC Financial Services, LLC. All rights reserved.

Empowered by Innovation

NEC

224 CALL TODAY AND FIND OUT HOW LEASING BENEFITS YOU & YOUR CUSTOMER

E-MAIL – TGSales@targetdist.com • INTERNET – www.targetd.com

Comprehensive Communications Solutions Designed to Meet the Unique Challenges of Small to Medium Businesses



SL1100

In today's highly competitive business environment, effective and reliable communications are critical to a company's success.

Therefore, it is important to invest in a unified communications solution that can take advantage of the latest productivity-enhancing IP applications that can deliver increased performance throughout an organization – that solution is NEC's SL1100 Communications System.



This unique platform is the ideal solution for any small business. The SL1100 makes the user more reachable, responsive and productive while allowing for growth well into the future.

See pages 22 and 23 of this catalog for more information.



SV8100

The UNIVERGE SV8100 Communications Server is a comprehensive integrated solution designed to meet the unique challenges of small to medium size businesses.

This high-performance, feature-rich solution supports pure peer-to-peer IP telephony connectivity, advanced UC applications and networking, traditional digital switching, or a combination - all from one solution.

By integrating diverse hardware components and software applications, NEC brings control of telephony features and related call information right to the user's PC, and provides advanced Computer Telephony Integration (CTI) throughout your organization.



See pages 20 and 21 of this catalog for more information.